



Disassembling the Teac DC-D2831

This will walk you through the steps necessary...

Written By: Jake Hamilton



INTRODUCTION

This will walk you through the steps necessary to access crucial parts inside the Teac DC-D2831, to make adjustments or repairs. Electronics are delicate, so be sure to take caution when making modifications and during reassembly. Needle nose pliers are a must for removing the snap ring!

Before beginning this repair, turn off your stereo and unplug it from the power outlet.


TOOLS:

Phillips #1 Screwdriver (1)

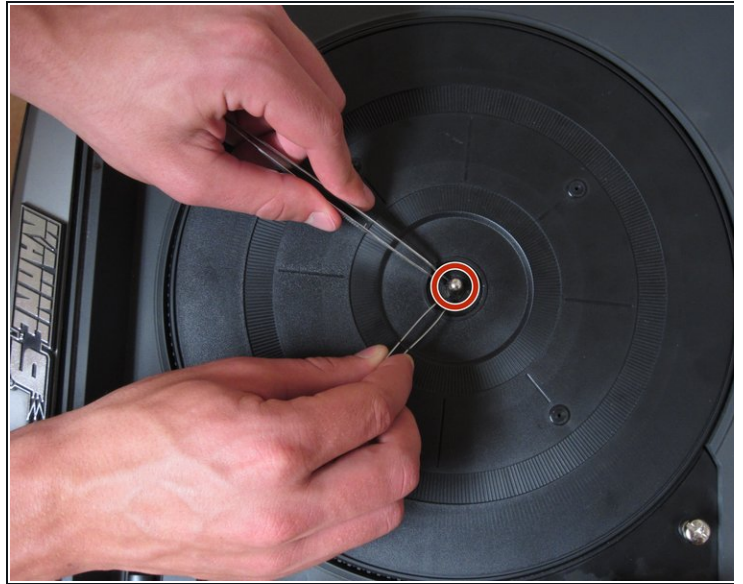
Large Needle Nose Pliers (1)

Step 1 — Disassembling the Teac DC-D2831



 Make sure the device is turned off and unplugged. This will eliminate the danger of getting electrocuted while repairing the device or damaging components.

Step 2



- Lift the lid to get to the turntable.
- Using the appropriate tools (needle-nose pliers, tweezers, screwdriver, etc.), remove the snap ring from the center of the turntable. The snap-ring is the small metal ring around the axel of the turntable.
- ① The snap-ring is hard to remove so be patient and don't be afraid to use some force.
- ① Feel free to use whatever tool(s) that will remove the snap-ring. The above list of tools are just a suggestions.

Step 3



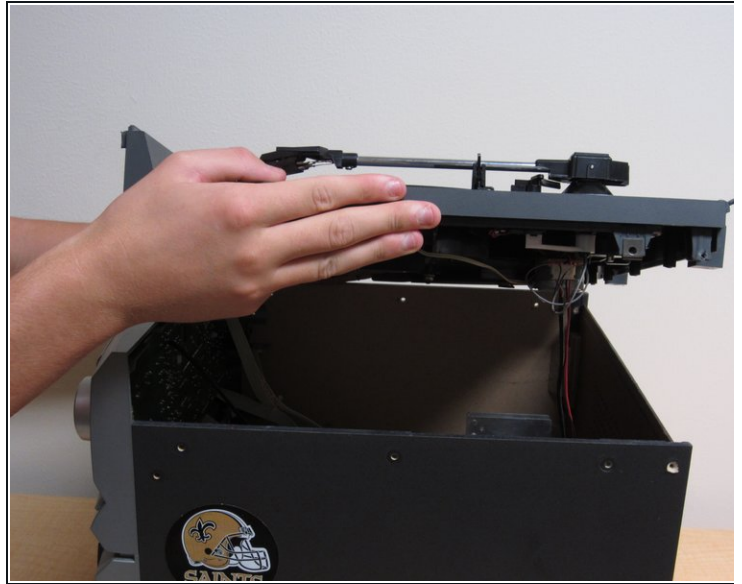
- Gently lift the turntable from the rest of the device.
- If the device has a faulty belt, see the belt repair guide here: [Belt Repair Guide](#)

Step 4



- Remove the screws on the side of the device using a Phillips #2 screwdriver.
- When removing the screws, take note of which screws go where.
- 27.0mm
- 19.8mm
- 12.0mm

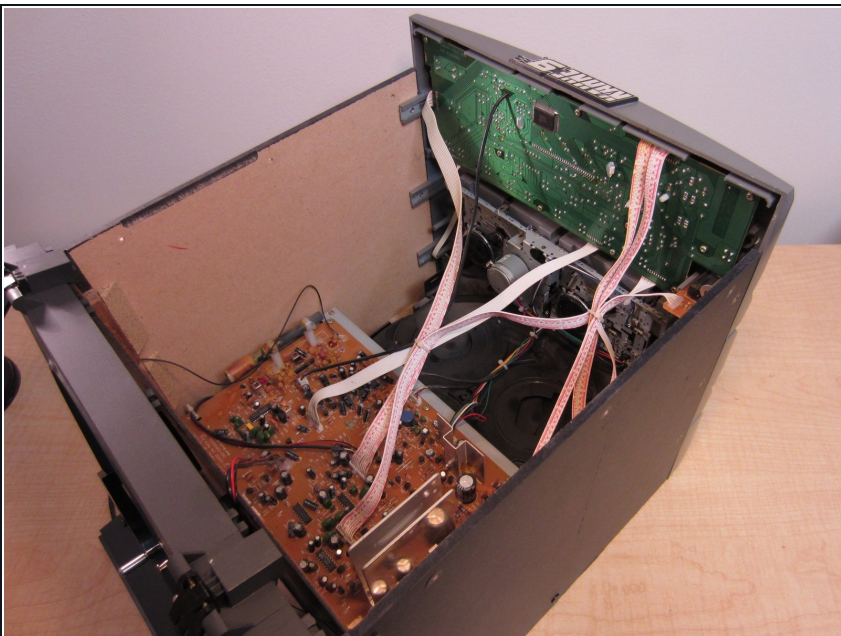
Step 5



- Lift the base that the turntable was resting on from the rest of the device.

⚠ Remove the base slowly so to not sever the connection with the wire attached from the base to the circuit board.

Step 6



- If the device is having motor issues, continue here: [Motor Repair Guide](#).
- If the device is having issues with the display, continue here: [Volume Control Knob](#).

To reassemble your device, follow these instructions in reverse order.