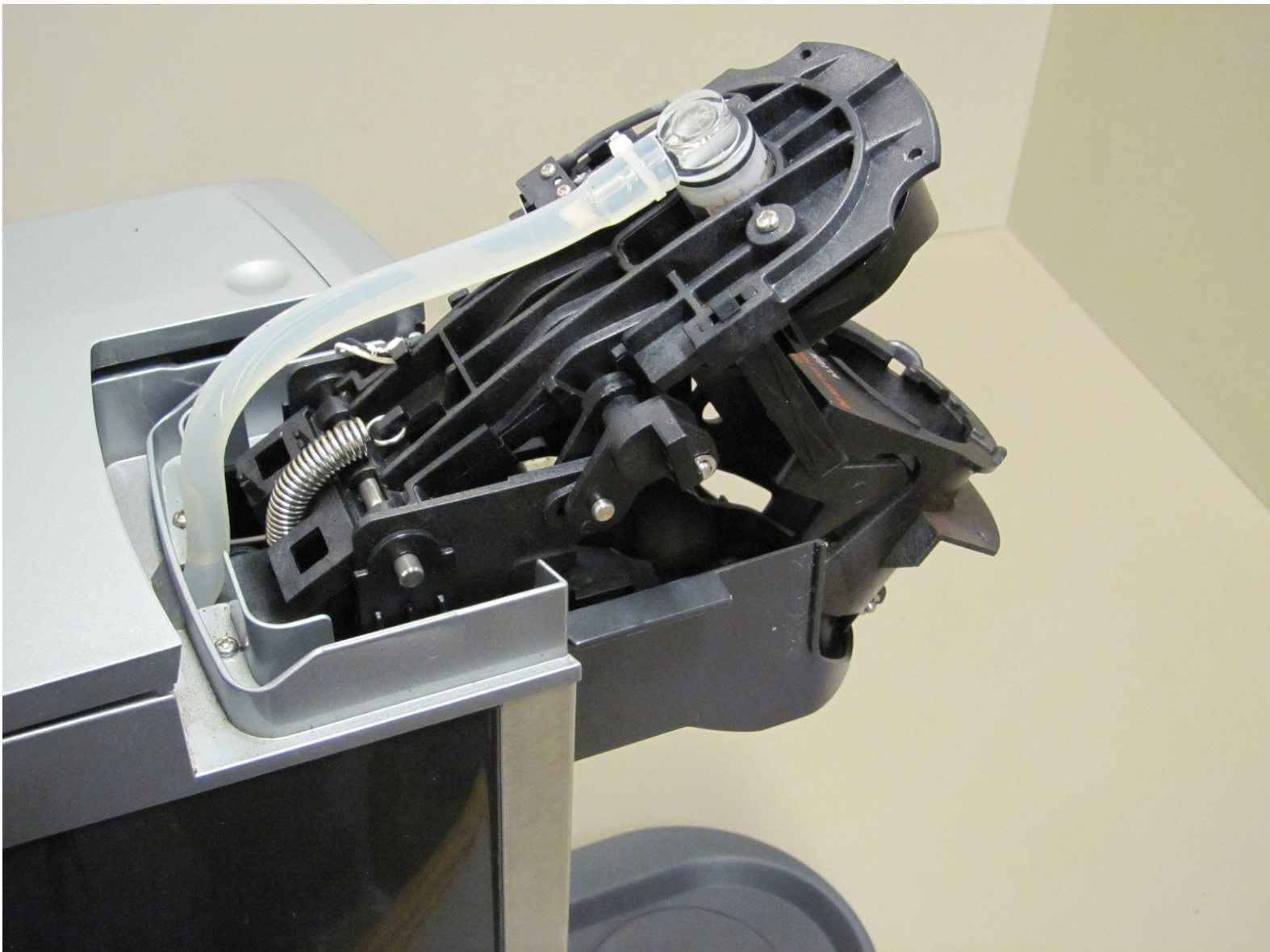




# Breville BKC600XL Water Valve Replacement

Replacing the water valve should it fail to work.

Written By: Antonio



---

## INTRODUCTION

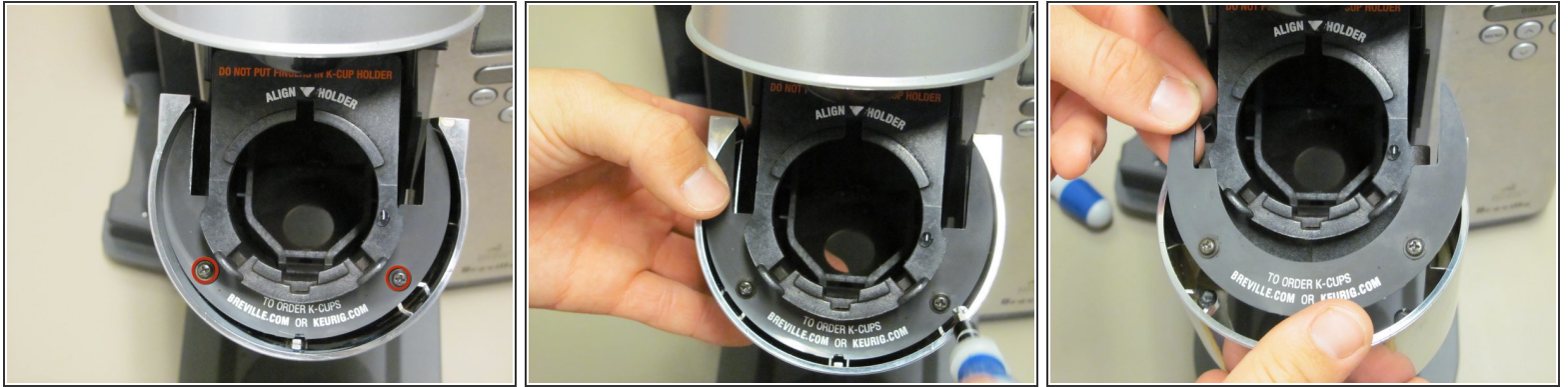
Replacing the water valve should it fail to work.



### TOOLS:

- [1.5mm Hex Screwdriver](#) (1)
  - [Phillips #0 Screwdriver](#) (1)
-

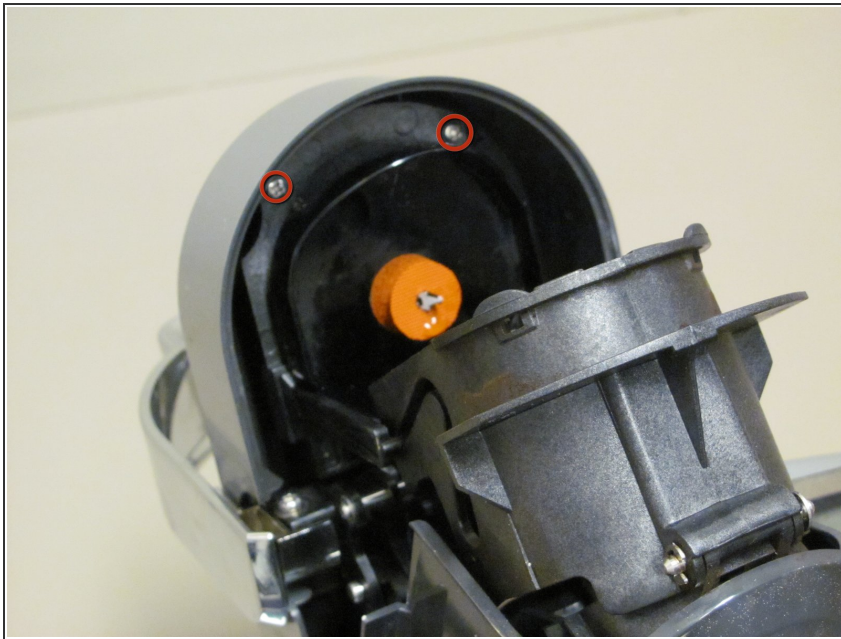
## Step 1 — "Bottom" Black Shell Piece



- Remove the two 12mm black Phillips screws using a Phillips #0 screwdriver.

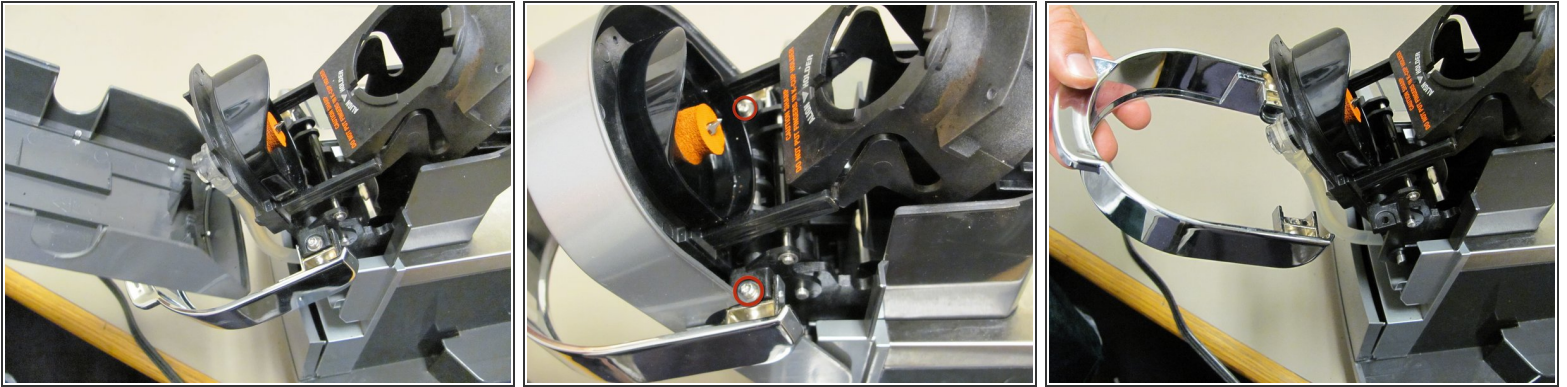
☑ Reminder for reassembly; This bottom piece is first to be screwed back on.

## Step 2 — "Top" Black Shell Piece



- Remove the two 12mm Phillips screws using a Phillips #0 screwdriver.

### Step 3 — Silver Casing



- Remove the grey plastic casing.
- Remove the two 12mm hexagonal screws using a 1.5mm hex screwdriver.

### Step 4 — Water Valve



- Cut the band connecting the hose to the water valve.
- Remove the water valve.
- ☑ Reminder for reassembly; You will need a new band to tie the hose back to the water valve.

To reassemble your device, follow these instructions in reverse order.