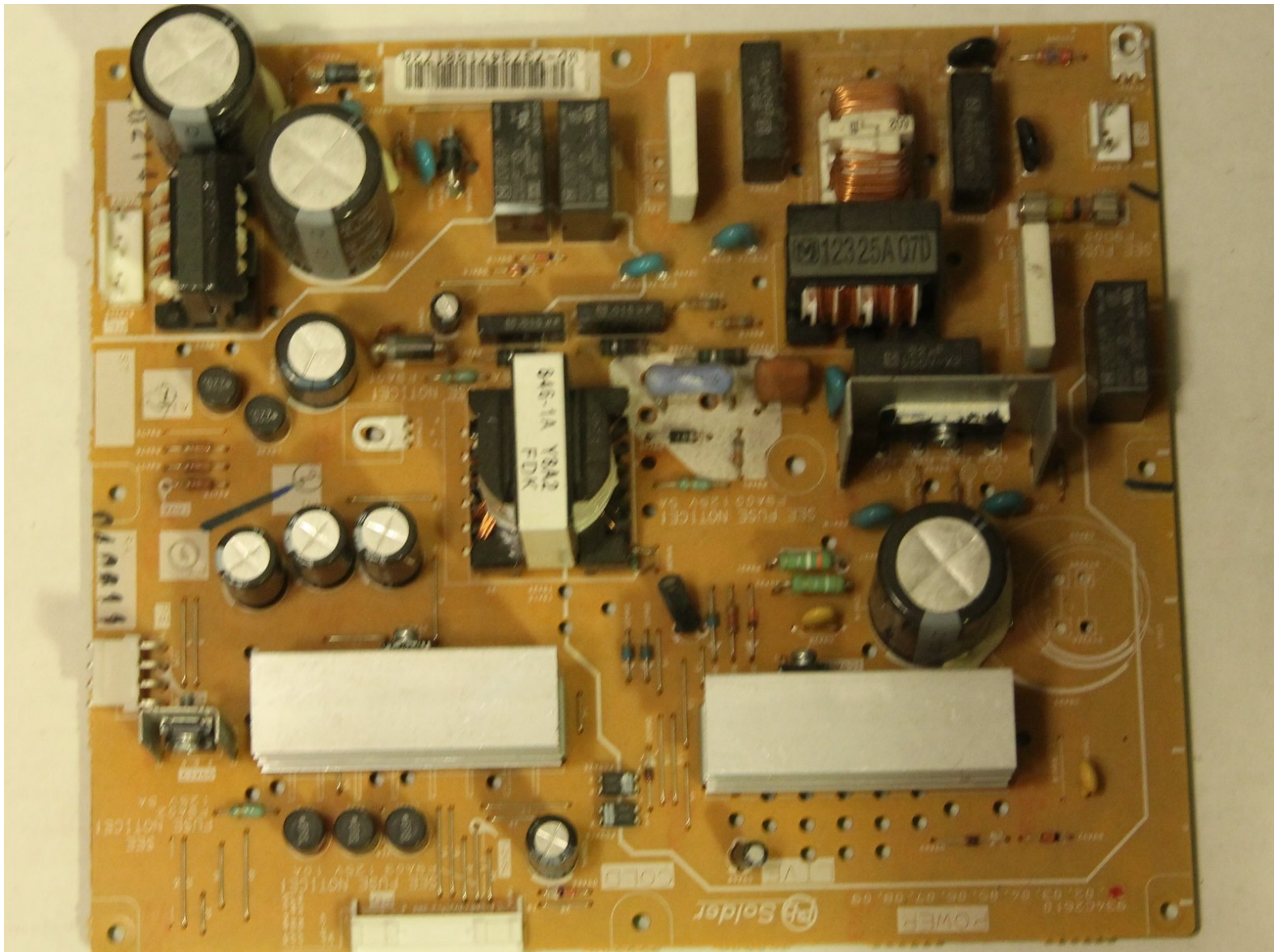




Mitsubishi WD57734 Power Supply Replacement

Install a new power supply in your Mitsubishi WD-57734 DLP HDTV.

Written By: Graham Copland



INTRODUCTION

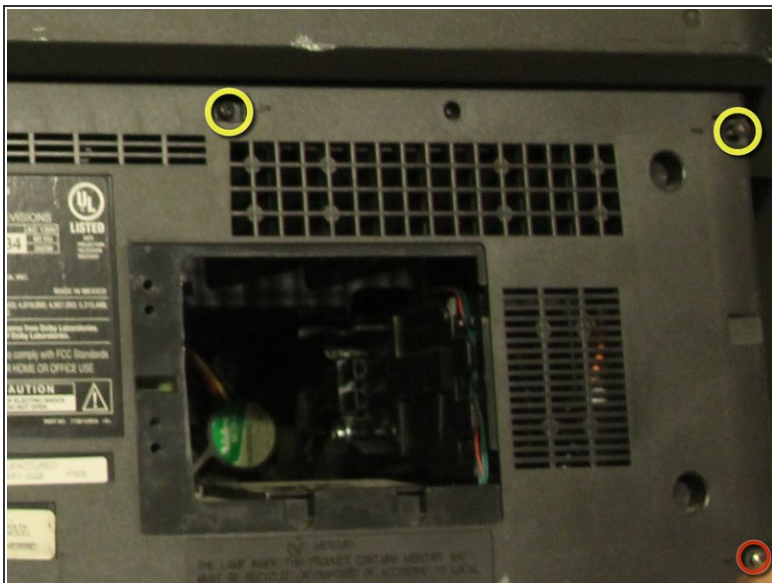
Use this guide to install a new power supply.



TOOLS:

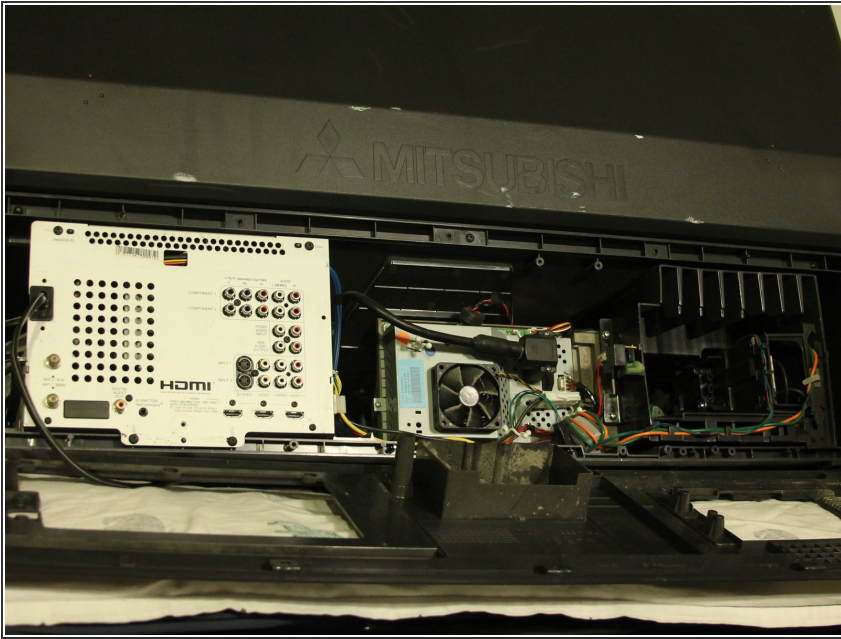
- [Anti-Static Wrist Strap](#) (1)
 - [Phillips #0 Screwdriver](#) (1)
 - [Phillips #1 Screwdriver](#) (1)
 - [Phillips #2 Screwdriver](#) (1)
-

Step 1 — Back Panel



- Remove the following 8 Phillips #1 screws:
 - One 22 mm Phillips #1 in the bottom right corner of the back panel.
 - One 18 mm Phillips #1 in the top middle of the back panel.
 - Six 18 mm Phillips #1 in the rest of the back panel.

Step 2



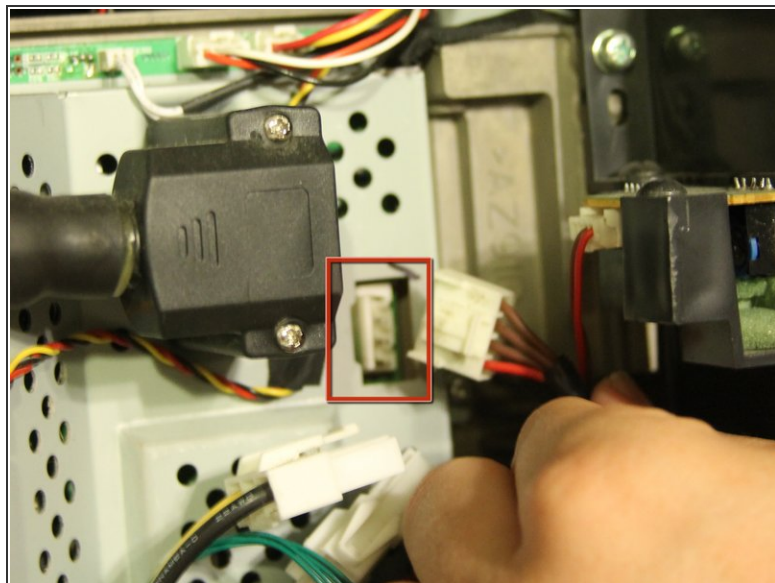
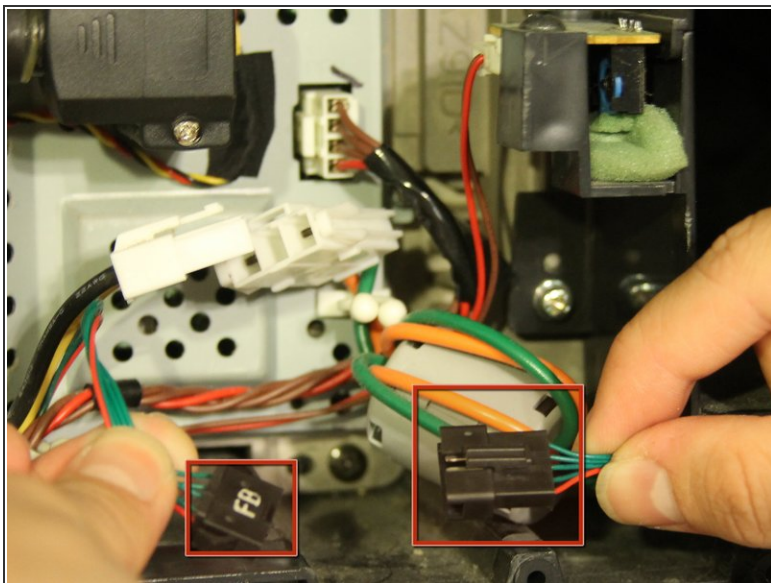
- Pull the back panel off of the television by gripping the sides and rotating it down.

Step 3 — Power Supply



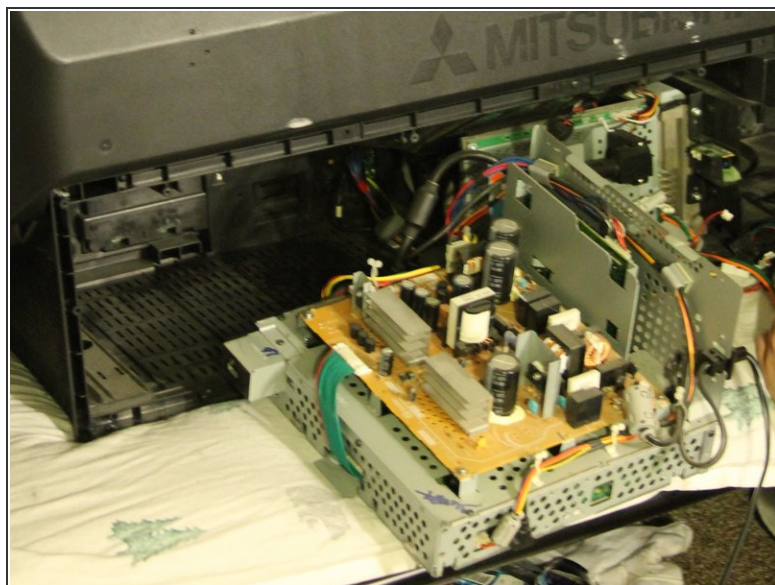
- Remove the four 10 mm black Phillips #1 screws with fine thread that attach the protective case to the TV.

Step 4



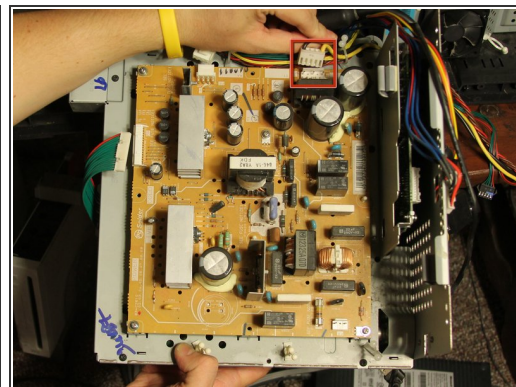
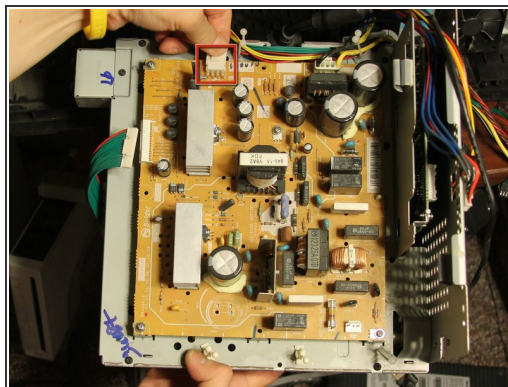
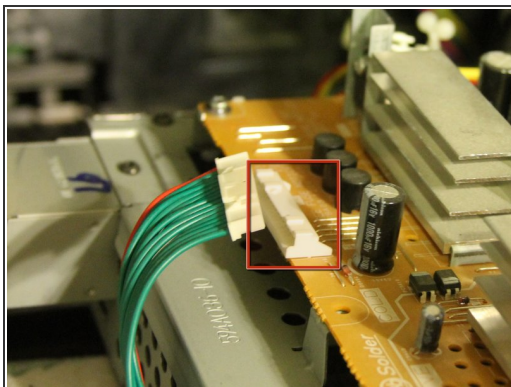
- Disconnect the lamp ballast power connection and the light engine power connection by pressing down the tab and pulling out the connection.

Step 5



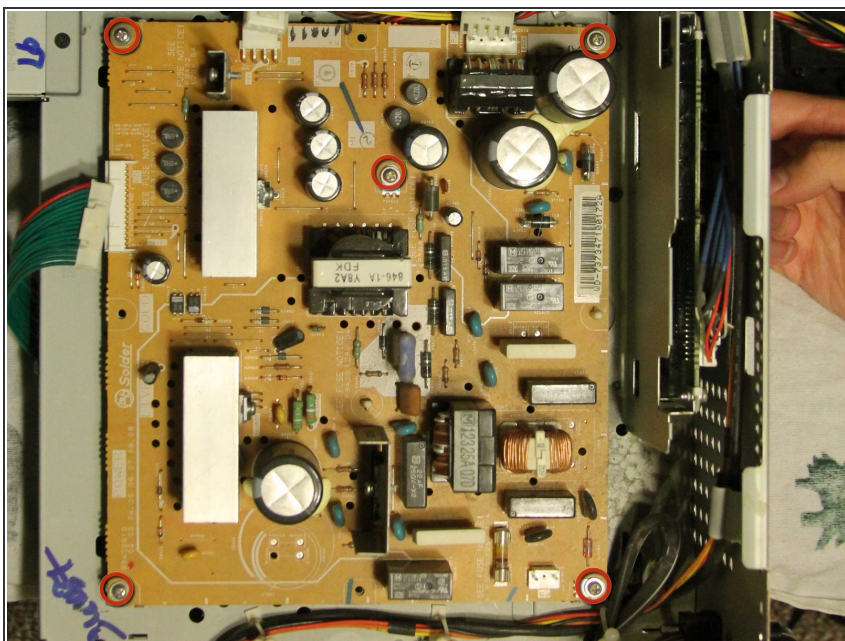
- Pull out the protective case holding the power supply and input/output boards.

Step 6



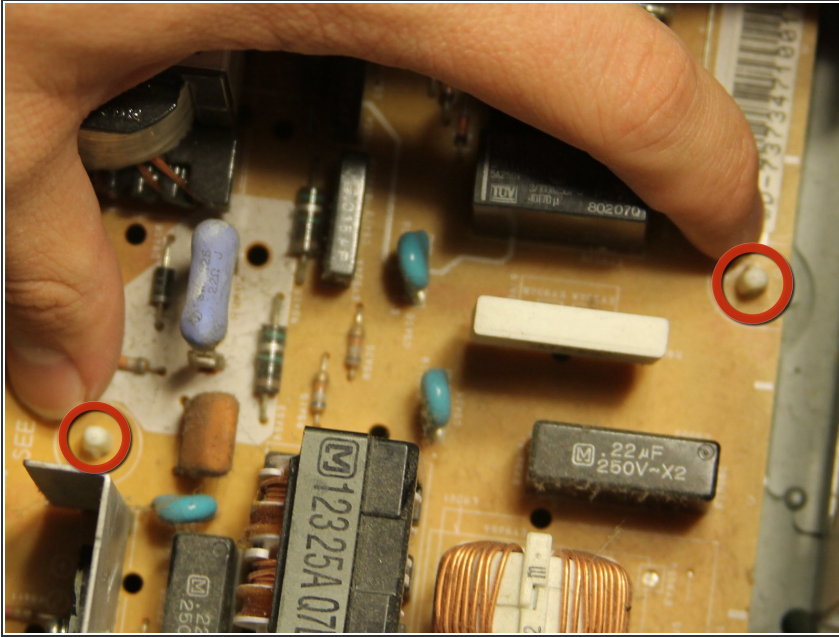
- Unplug the power connections on the power supply board by pressing down the tabs on the connections and gently pulling the connections away from the board.

Step 7



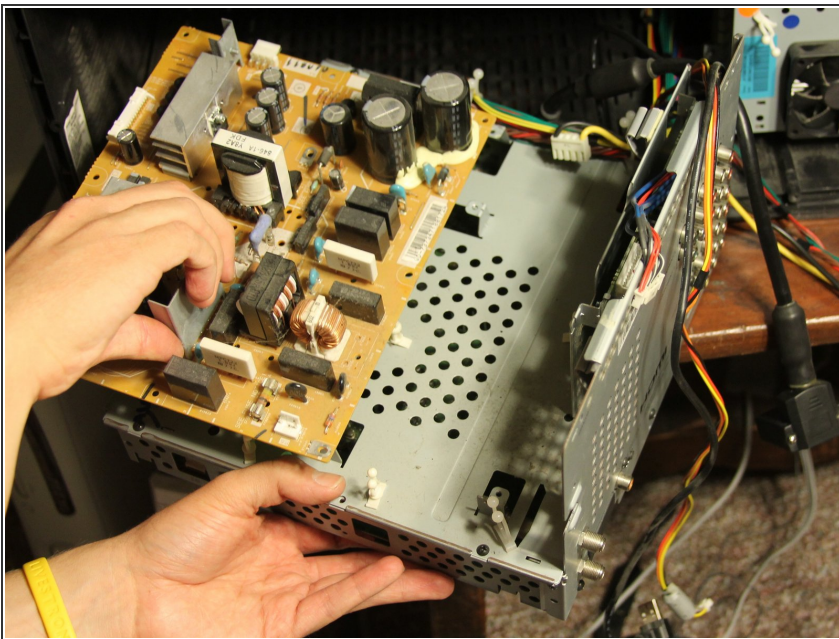
- Remove the five 10 mm silver, coarse threaded Phillips #0 screws securing the power supply board to the case.

Step 8



- Unlatch white clips from the power supply board by pushing in the tabs and lifting up on the motherboard.
- ⚠ This may require excessive force and patience. Using an interchangeable screwdriver with no bit may help. Place it over the white plastic notches and pull in the direction of the tab release while pulling upward on the power supply board to release.

Step 9



- Remove the power supply board from its protective case by pulling it straight up and away from the case.

To reassemble your device, follow these instructions in reverse order.