



# Nintendo Switch Battery Replacement

Follow this guide to replace an old and...

Written By: Craig Lloyd



# INTRODUCTION

Follow this guide to replace an old and degraded battery in the Nintendo Switch game console.

The Switch uses JIS screws, but you can use a Phillips screwdriver in a pinch. Be very careful not to strip the screws. iFixit's Phillips bits are designed to be cross-compatible with JIS-style screws.

When you remove the shield plate, you'll need to replace the thermal compound between the plate and the heatsink. Since normal thermal paste isn't designed to bridge large gaps, the closest replacement is K5 Pro viscous thermal paste.

This guide, and the part we sell, are compatible with the original Nintendo Switch model released in 2017, as well as the newer refreshed model released in 2019 (model numbers HAC-001 and HAC-001(-01), respectively).

**For your safety, discharge the battery below 25% before disassembling your Switch.** This reduces the risk of a fire hazard if the battery is accidentally damaged during the repair. If your battery is swollen, [take appropriate precautions](#).



## TOOLS:

[Tri-point Y00 Screwdriver](#) (1)  
[JIS #000 Screwdriver](#) (1)  
[Tweezers](#) (1)  
[Spudger](#) (1)  
[iFixit Opening Picks \(Set of 6\)](#) (1)  
[Microfiber Cleaning Cloths](#) (1)  
[Isopropyl Alcohol](#) (1)  
[K5-PRO Viscous Thermal Paste](#) (1)  
[Plastic Cards](#) (1)



## PARTS:

[Nintendo Switch Replacement Battery](#) (1)  
[Tesa 61395 Tape](#) (1)

---

## Step 1 — Release the Joy Con controller locking tabs



ⓘ Before you begin this repair, make sure the device is completely powered off.

- Press and hold down the small round button on the back of the Joy Con controller.
- While you hold down the button, slide the controller upward.

## Step 2 — Remove the Joy Con controllers



- Continue sliding the Joy Con upward until it's completely removed from the console.
- ⓘ Repeat this same process for the other Joy Con.

### Step 3 — Remove the back-side screws



- Use a Y00 screwdriver to remove the four 6.3 mm-long screws securing the rear panel.
- ⓘ Throughout this repair, [keep track of each screw](#) and make sure it goes back exactly where it came from.

### Step 4 — Remove the top and bottom screws



- Use a JIS 000 driver or an official iFixit PH 000 driver to remove the following screws securing the rear panel:
  - One 2.5 mm-long screw on the top edge of the device
  - Two 2.5 mm-long screws on the bottom edge of the device
- ⓘ To prevent these tight screws from [stripping](#), apply firm downward force, work slowly and try another JIS 000 or PH 000 driver if the screws won't come out.

## Step 5



- Use a JIS 000 screwdriver or an official iFixit PH 000 driver to remove the two 3.8 mm center screws on the sides of the device (one on each side).

## Step 6



- Use your finger to flip up the kickstand on the back of the device.
  - ① If there's a microSD card in the microSD card slot, remove it now before you continue to the next step.

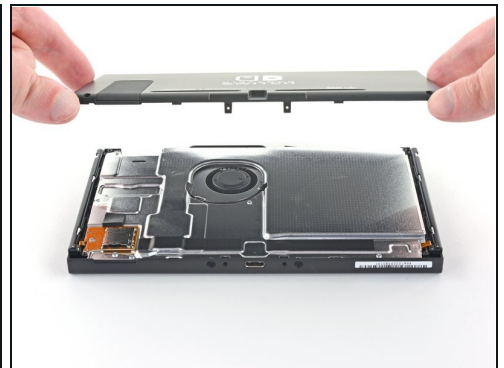


## Step 7



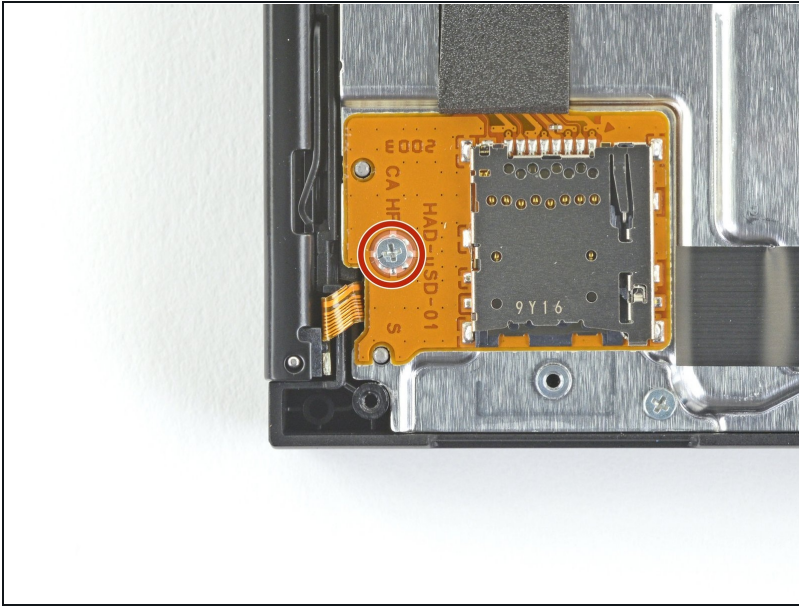
- Use a JIS 000 screwdriver or an official iFixit PH 000 driver to remove the 1.6 mm screw in the kickstand well.
- Close the kickstand.

## Step 8



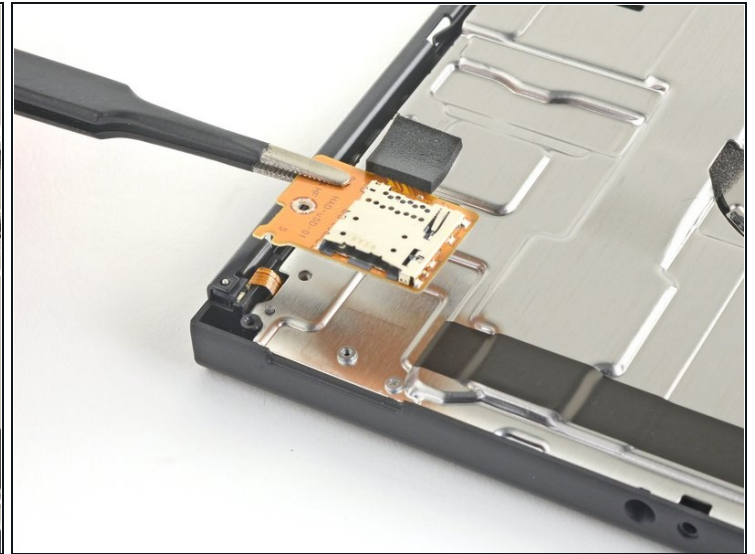
- Open the game card cartridge flap.
  - ① The game card cartridge flap attaches to the other half of the plastic shell, preventing you from completely lifting up the rear panel if it's closed.
- Lift the rear panel up from the bottom of the device and remove it.

## Step 9 — Remove the microSD card reader



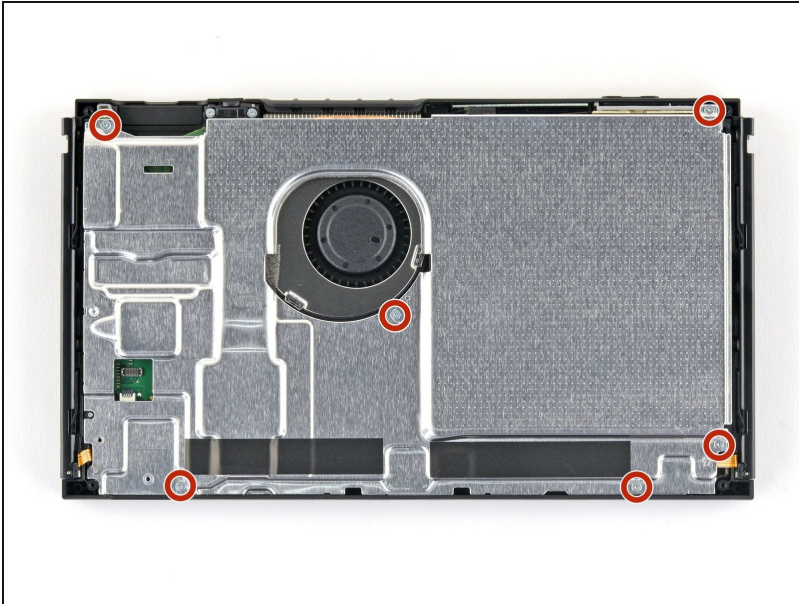
- Use a JIS 000 screwdriver or an official iFixit PH 000 driver to remove the 3.1 mm screw securing the microSD card reader to the device.

## Step 10



- Use your fingers or a pair of tweezers to lift the microSD card reader straight up from the device to disconnect and remove it.
- ☑ During reassembly, make sure the press connector underneath the foam pad is firmly connected to the motherboard. It may help to remove the foam pad before reinstalling the card reader.

## Step 11 — Remove the shield plate



- Use a JIS 000 screwdriver or an official iFixit PH 000 driver to remove the six 3 mm screws securing the shield plate to the device.

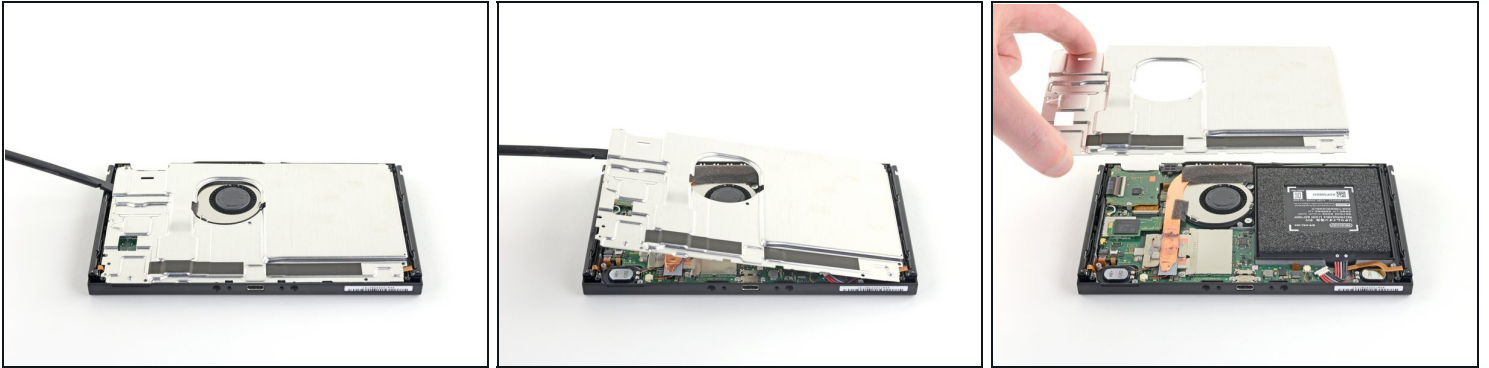
## Step 12



- Use your fingers or a pair of tweezers to peel back the piece of foam on the top edge of the device near the fan exhaust port.  
**⚠ If the foam doesn't easily peel away, don't force it as it might end up tearing. Carefully peel at different spots to pull back the foam.**

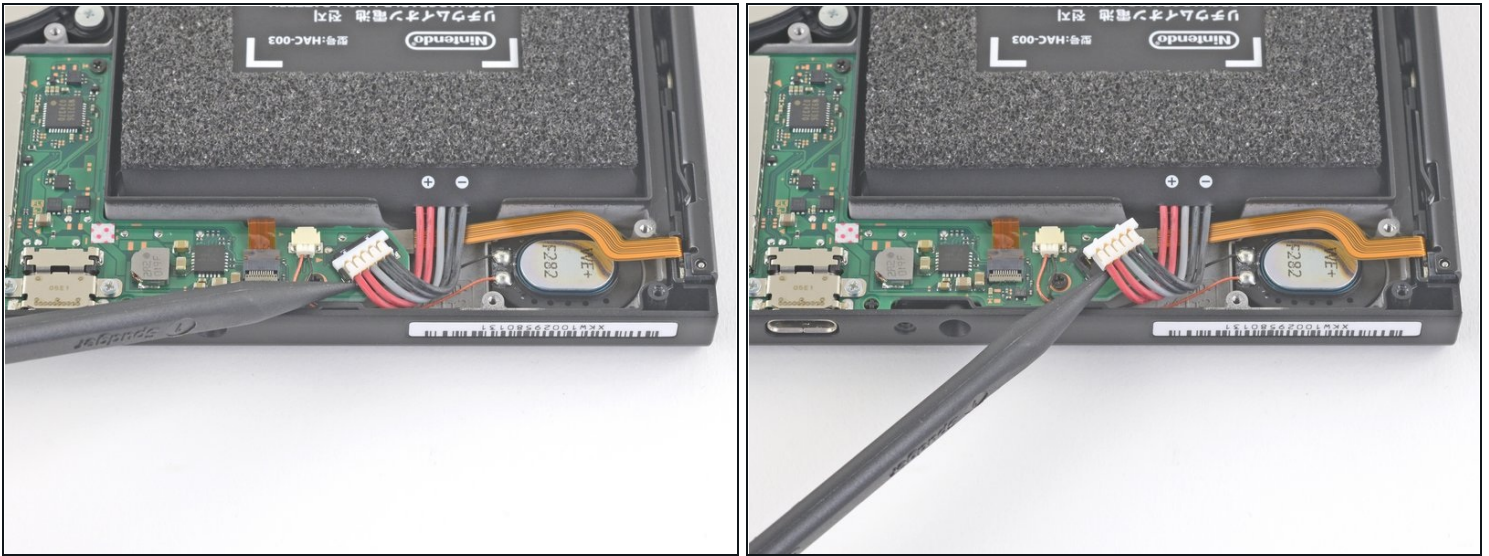


## Step 13



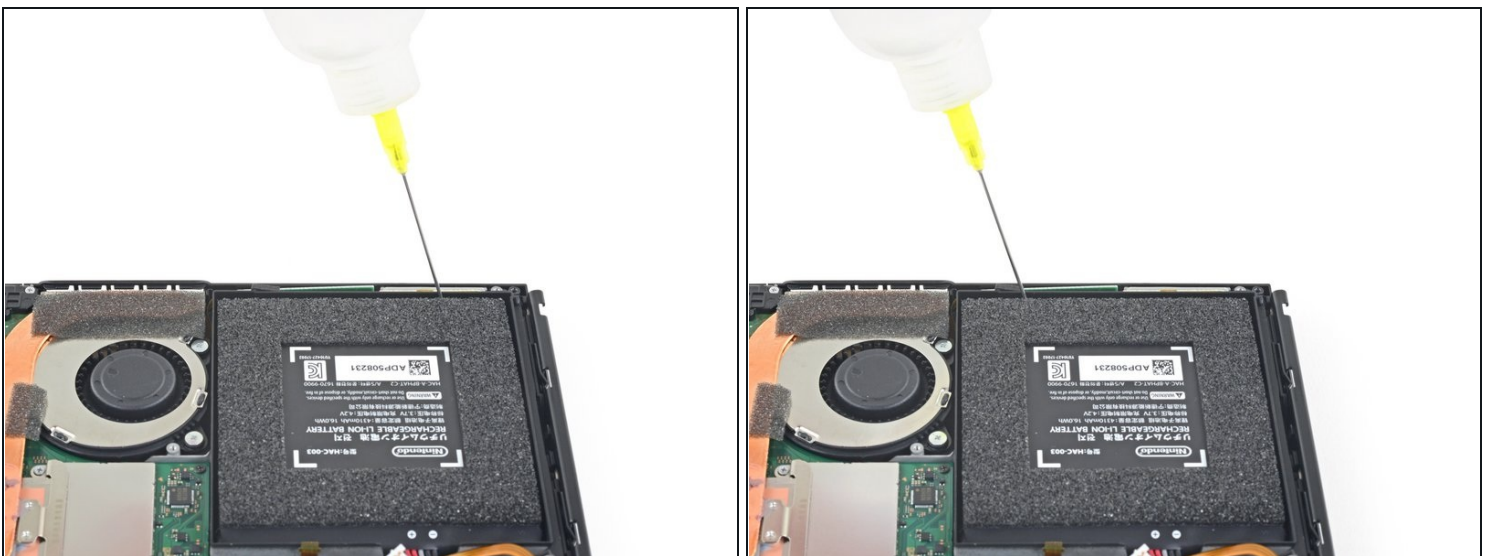
- Insert a spudger underneath the shield plate along the edge of the device.
- Pry up to lift the shield plate and remove it from the device.
  - ① You may feel a bit of resistance. This is normal, since the shield plate is slightly bonded to the heat sink with thermal paste.
- ① A thick pink thermal compound bridges the gap between the shield plate and the copper heat sink underneath. This helps prevent the Switch from overheating.
  - You can reuse the pink thermal compound if you're careful. Keep the compound clean and make sure it makes solid contact between the heat sink and the shield during reassembly.
  - If you need to replace it, refer to our [thermal paste guide](#) to remove the old thermal compound and replace it with an appropriate compound, such as [K5 Pro](#), during reassembly.

## Step 14 — Disconnect the battery



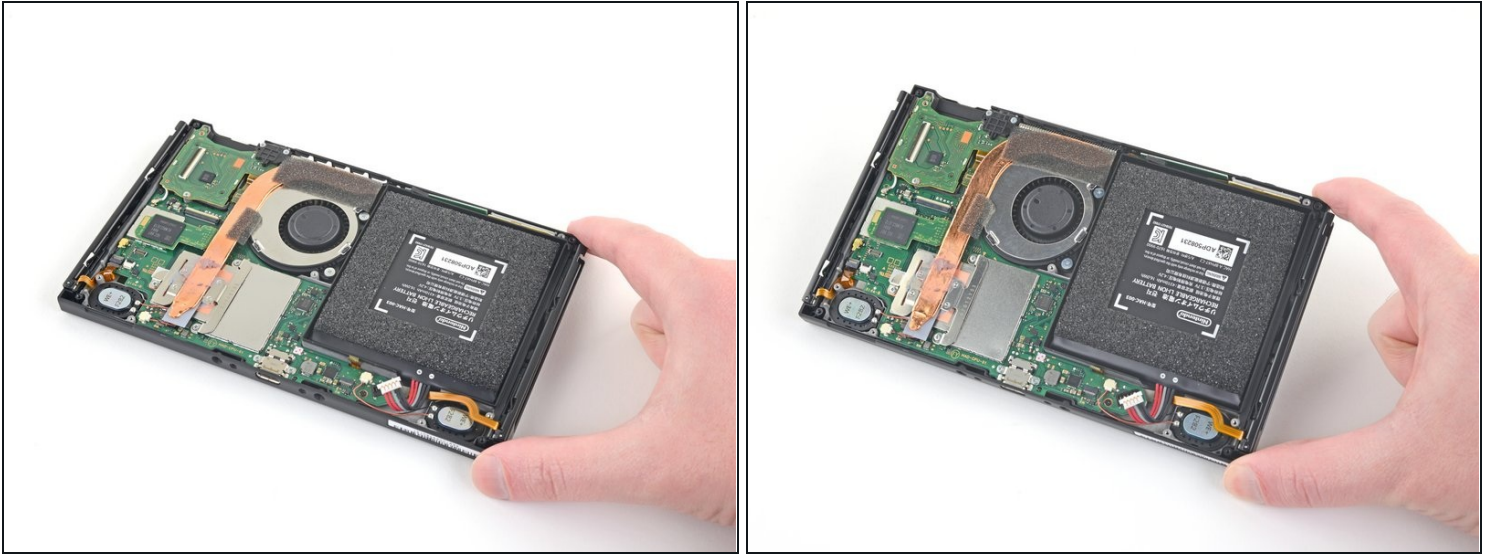
- Use the point of a spudger to pry the battery connector straight up and out of its socket on the motherboard.

## Step 15 — Remove the battery



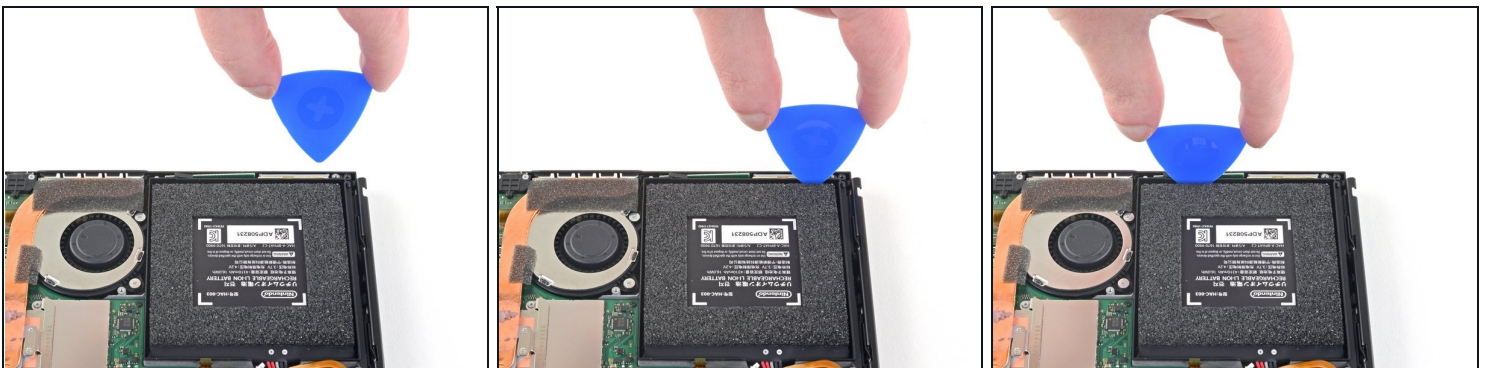
- Apply a few drops of [adhesive remover](#) or high-concentration (90% or higher) isopropyl alcohol inside the battery well along the top edge to weaken the adhesive.
- ❗ If you are using adhesive remover, [follow these preparation steps first](#).

## Step 16



- Tilt the top edge of the device upward to allow the isopropyl alcohol to work its way underneath the battery.
- Hold for 1-2 minutes to allow time for the isopropyl alcohol to weaken the adhesive.

## Step 17



- Insert an opening pick into the gap between the battery and the wall of the battery well.
- Carefully dig the tip of the opening pick underneath the battery and slide it along the edge to begin slicing the adhesive.

**⚠ Take care not to puncture or bend the battery with your tool—a punctured or bent battery may leak dangerous chemicals or cause a thermal event.**



## Step 18



- Leave the opening pick in place and apply a few more drops of adhesive remover or isopropyl alcohol inside the battery well.
- Tilt the top edge of the device upward and wait 1-2 minutes for the isopropyl alcohol to weaken the adhesive.

## Step 19



- Continue sliding the opening pick deeper along the top edge of the battery, slicing more of the adhesive underneath.



## Step 20



- Once there's enough room, insert a [plastic card](#) underneath the battery and slowly pry the battery up.

ⓘ You may need to apply more isopropyl alcohol if you have difficulty prying.

⚠ Be careful not to bend the battery as you pry.

- Remove the battery.

⚠ Do not reuse the battery after it has been removed, as doing so is a potential safety hazard. Replace it with a new battery.

## Step 21



- Use adhesive remover or isopropyl alcohol and a [microfiber cloth](#) to clean up any remaining adhesive left behind in the battery well before you install the new battery.

ⓘ If your new battery does not come with pre-installed adhesive, [follow this guide to install pre-cut adhesive](#) on the bottom of the battery.

---

To reassemble your device, follow these instructions in reverse order.

For optimal performance, [calibrate your newly installed battery](#) after completing this guide.

Take your e-waste to an [R2 or e-Stewards certified recycler](#).

Repair didn't go as planned? Try some [basic troubleshooting](#), or ask our [Nintendo Switch Answers community](#) for help.