



Nintendo Switch Headphone Jack and Game Card Reader Replacement

Follow this guide to replace a damaged or...

Written By: Craig Lloyd



INTRODUCTION

Follow this guide to replace a damaged or faulty headphone jack and game card reader in the Nintendo Switch game console.

The Switch uses JIS screws, but you can use a Phillips screwdriver in a pinch. Be very careful not to strip the screws. iFixit's Phillips bits are designed to be cross-compatible with JIS-style screws.

Note: Removing the heat sink will make it easier to remove the headphone jack and game card reader, but it's not required. If you remove the heat sink, be sure to clean off the thermal paste from both components—as well as the CPU—and reapply new paste before you install the shield plate and heat sink.

When you remove the shield plate, you'll need to replace the thermal compound between the plate and the heatsink. Since normal thermal paste isn't designed to bridge large gaps, the closest replacement is K5 Pro viscous thermal paste.

Note: This guide, and the part we sell, are compatible with the original Nintendo Switch model released in 2017, as well as the newer refreshed model released in 2019 (model numbers HAC-001 and HAC-001(-01), respectively).



TOOLS:

[Tri-point Y00 Screwdriver](#) (1)
[JIS #000 Screwdriver](#) (1)
[Tweezers](#) (1)
[Spudger](#) (1)
[Microfiber Cleaning Cloths](#) (1)
[Isopropyl Alcohol](#) (1)
[K5-PRO Viscous Thermal Paste](#) (1)
[Thermal Paste](#) (1)



PARTS:

[Nintendo Switch Game Card Reader](#) (1)

Step 1 — Release the Joy Con controller locking tabs



ⓘ Before you begin this repair, make sure the device is completely powered off.

- Press and hold down the small round button on the back of the Joy Con controller.
- While you hold down the button, slide the controller upward.

Step 2 — Remove the Joy Con controllers



- Continue sliding the Joy Con upward until it's completely removed from the console.
- ⓘ Repeat this same process for the other Joy Con.

Step 3 — Remove the back-side screws



- Use a Y00 screwdriver to remove the four 6.3 mm-long screws securing the rear panel.
- ⓘ Throughout this repair, [keep track of each screw](#) and make sure it goes back exactly where it came from.

Step 4 — Remove the top and bottom screws



- Use a JIS 000 driver or an official iFixit PH 000 driver to remove the following screws securing the rear panel:
 - One 2.5 mm-long screw on the top edge of the device
 - Two 2.5 mm-long screws on the bottom edge of the device
- ⓘ To prevent these tight screws from [stripping](#), apply firm downward force, work slowly and try another JIS 000 or PH 000 driver if the screws won't come out.

Step 5



- Use a JIS 000 screwdriver or an official iFixit PH 000 driver to remove the two 3.8 mm center screws on the sides of the device (one on each side).

Step 6



- Use your finger to flip up the kickstand on the back of the device.
 - ① If there's a microSD card in the microSD card slot, remove it now before you continue to the next step.

Step 7



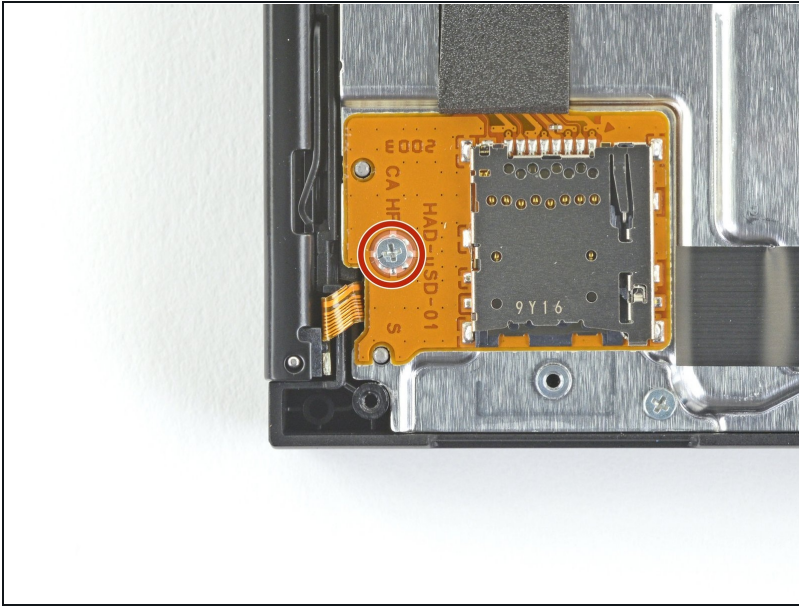
- Use a JIS 000 screwdriver or an official iFixit PH 000 driver to remove the 1.6 mm screw in the kickstand well.
- Close the kickstand.

Step 8



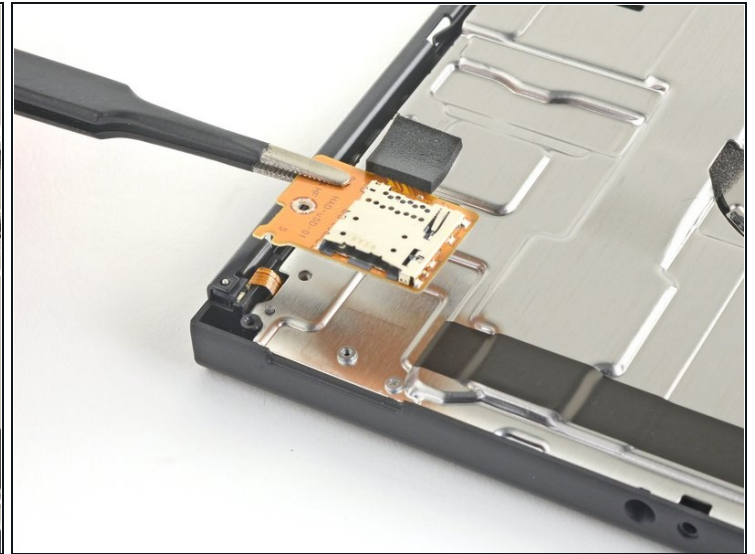
- Open the game card cartridge flap.
 - ① The game card cartridge flap attaches to the other half of the plastic shell, preventing you from completely lifting up the rear panel if it's closed.
- Lift the rear panel up from the bottom of the device and remove it.

Step 9 — Remove the microSD card reader



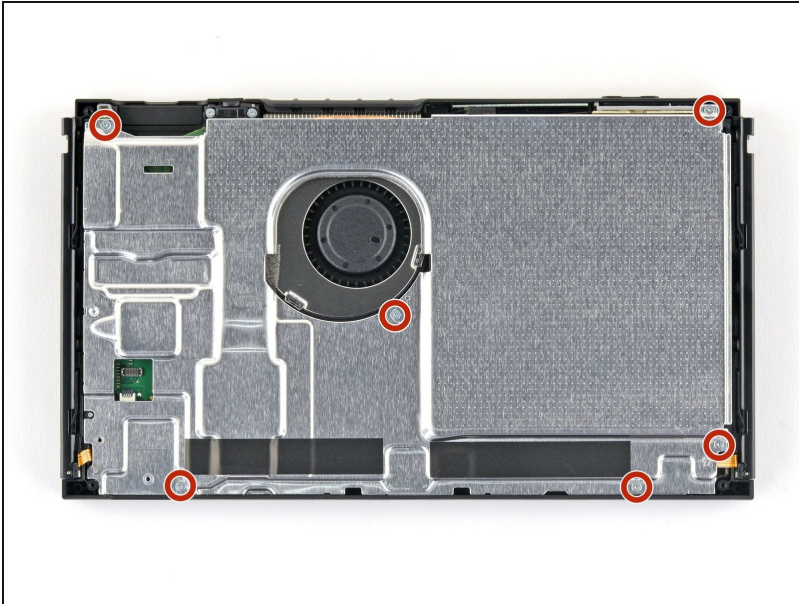
- Use a JIS 000 screwdriver or an official iFixit PH 000 driver to remove the 3.1 mm screw securing the microSD card reader to the device.

Step 10



- Use your fingers or a pair of [tweezers](#) to lift the microSD card reader straight up from the device to disconnect and remove it.
- ☑ During reassembly, make sure the press connector underneath the foam pad is firmly connected to the motherboard. It may help to remove the foam pad before reinstalling the card reader.

Step 11 — Remove the shield plate



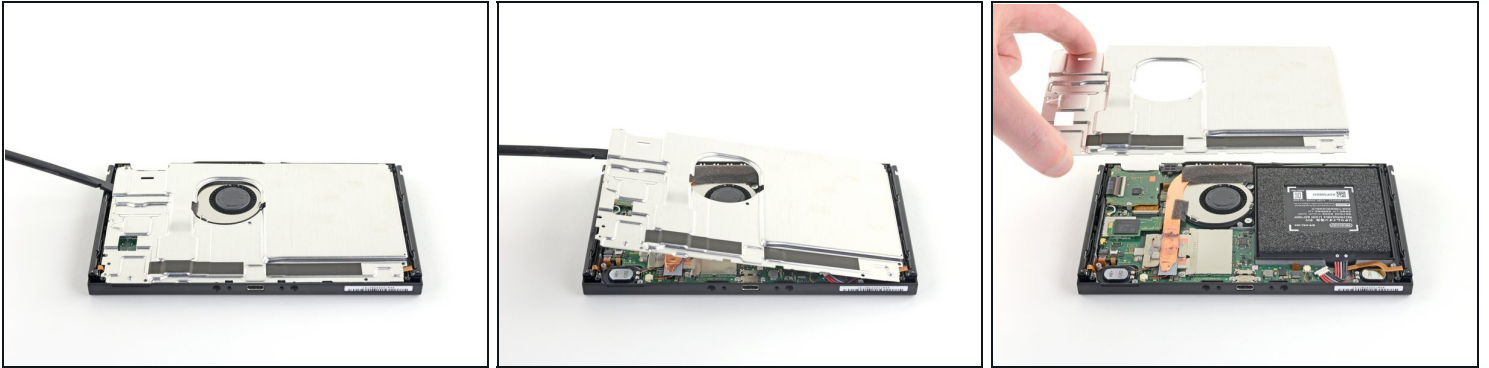
- Use a JIS 000 screwdriver or an official iFixit PH 000 driver to remove the six 3 mm screws securing the shield plate to the device.

Step 12



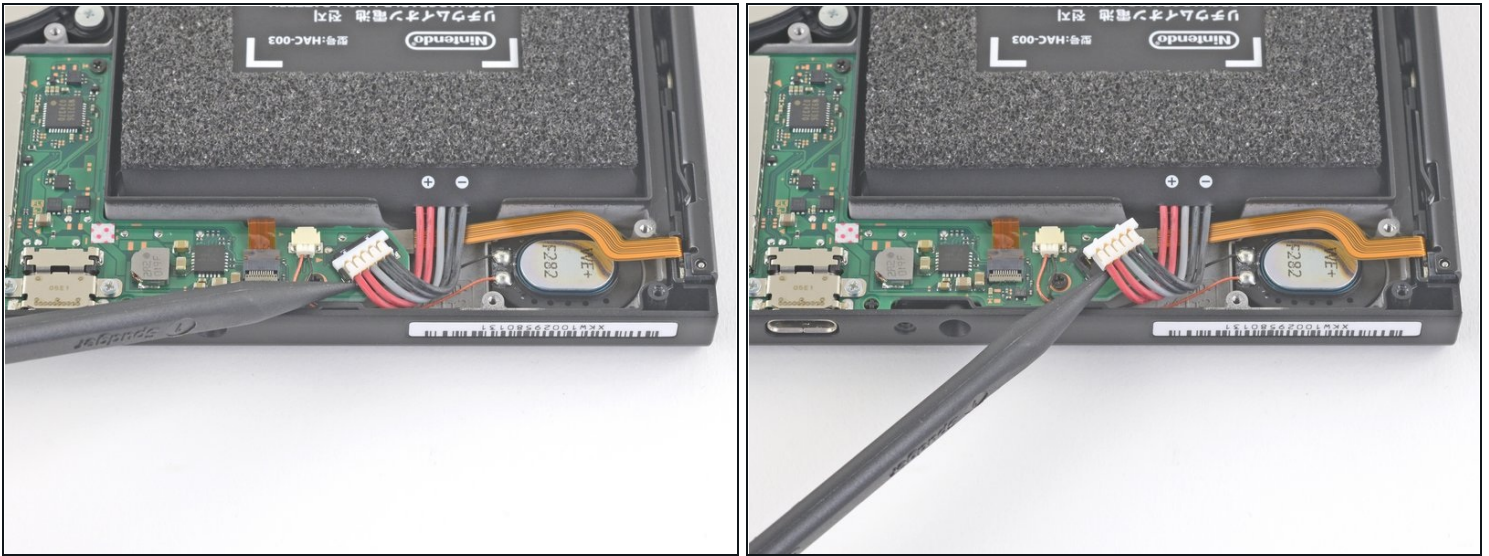
- Use your fingers or a pair of [tweezers](#) to peel back the piece of foam on the top edge of the device near the fan exhaust port.
⚠ If the foam doesn't easily peel away, don't force it as it might end up tearing. Carefully peel at different spots to pull back the foam.

Step 13



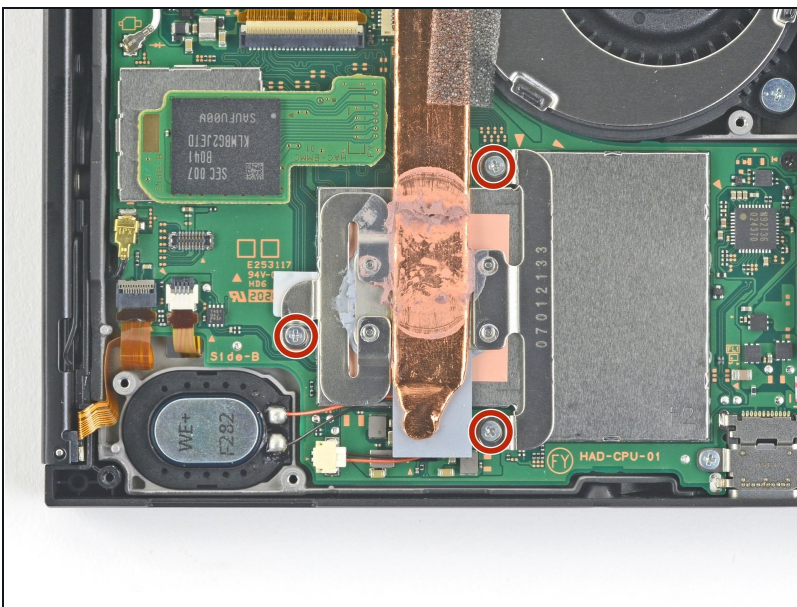
- Insert a spudger underneath the shield plate along the edge of the device.
- Pry up to lift the shield plate and remove it from the device.
 - ① You may feel a bit of resistance. This is normal, since the shield plate is slightly bonded to the heat sink with thermal paste.
- ① A thick pink thermal compound bridges the gap between the shield plate and the copper heat sink underneath. This helps prevent the Switch from overheating.
 - You can reuse the pink thermal compound if you're careful. Keep the compound clean and make sure it makes solid contact between the heat sink and the shield during reassembly.
 - If you need to replace it, refer to our [thermal paste guide](#) to remove the old thermal compound and replace it with an appropriate compound, such as [K5 Pro](#), during reassembly.

Step 14 — Disconnect the battery



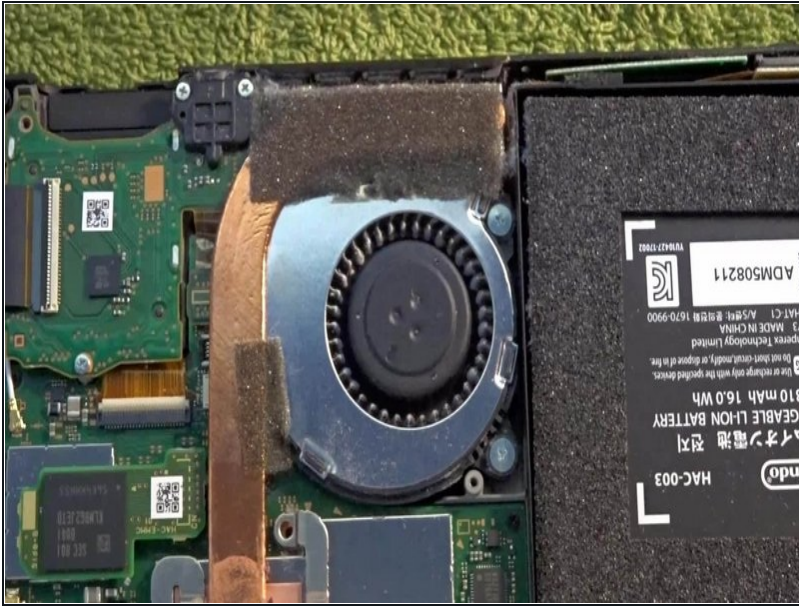
- Use the point of a spudger to pry the battery connector straight up and out of its socket on the motherboard.

Step 15 — Remove the heat sink



- Use a JIS 000 screwdriver or an official iFixit PH 000 driver to remove the three 3 mm screws securing the heat sink to the motherboard.

Step 16



- Carefully peel the two foam pieces stuck over both the heatsink and the fan away from the fan.

i The foam only needs to be peeled back enough to clear the fan.

⚠ The foam is really delicate and tears easily. Use the following technique to peel the foam:

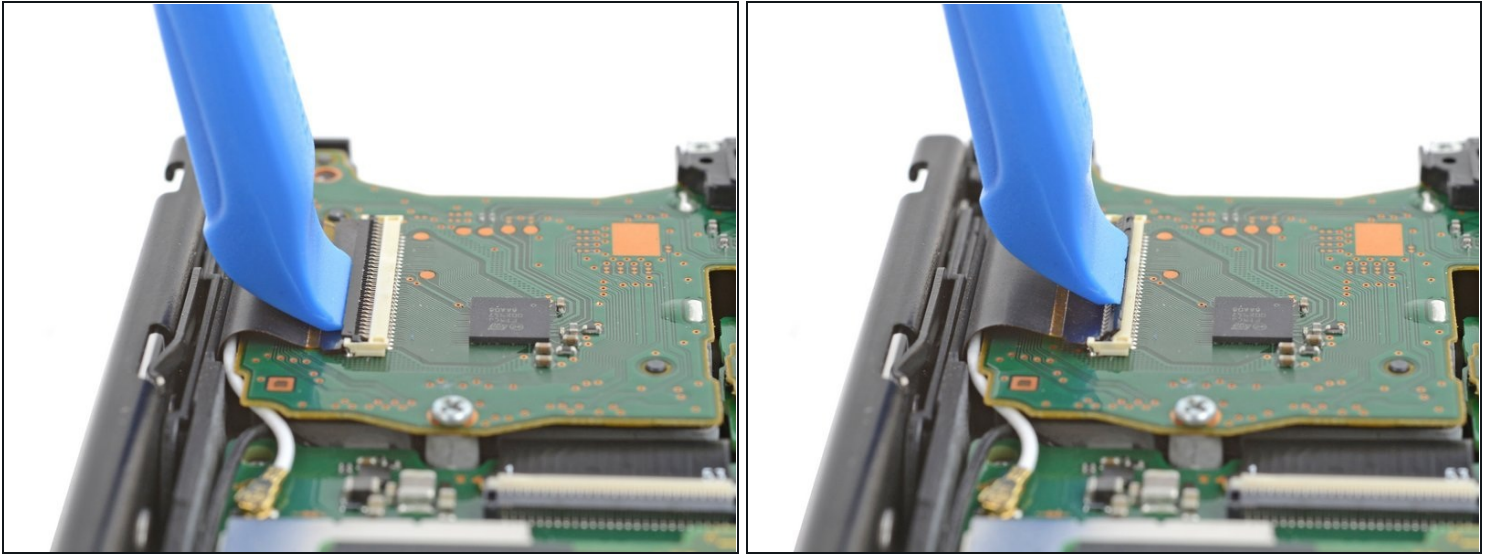
- Insert the point of a spudger underneath the part of the foam that isn't stuck against anything,
- Press the top of the foam with your finger to hold it in place.
- Roll the spudger tip underneath the foam all the way to the other end of the foam to release it.

Step 17



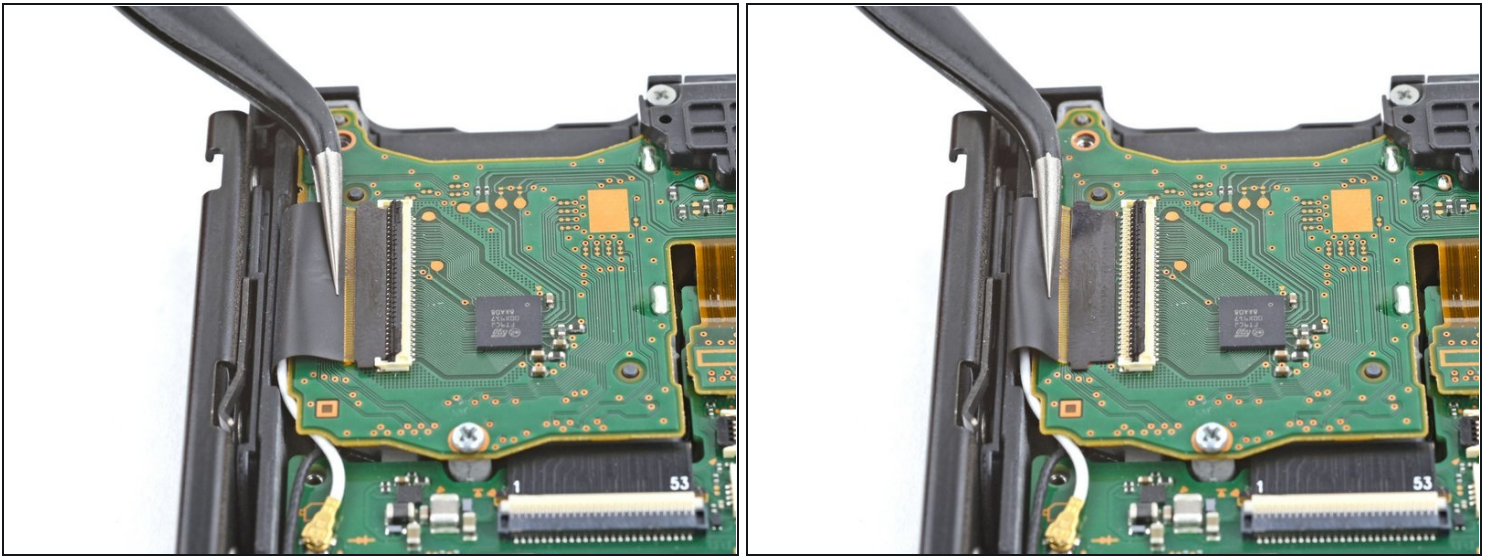
- Use a spudger or your fingers to lift the heatsink up and off the motherboard to remove it.
 - ① You may feel a bit of resistance. This is normal, since the heat sink is slightly bonded to the CPU with thermal paste.
- ★ Clean off the old thermal paste from the heat sink and CPU using high-concentration (90% or higher) isopropyl alcohol and a microfiber cloth. [Apply new thermal paste](#) to the CPU before reassembly.
- Apply thermal paste to all surfaces that had thermal paste applied previously. This includes between the heatpipe and aluminum shield, which the Switch uses as additional heatsinking.

Step 18 — Remove the headphone jack and game card reader



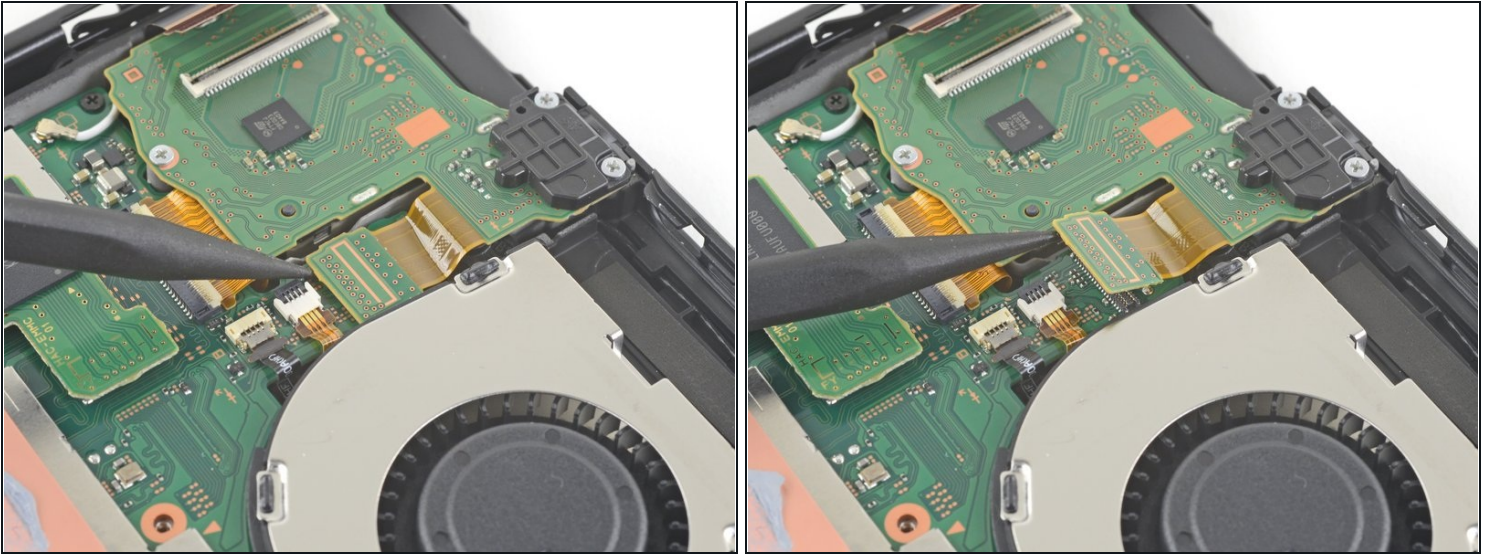
- Use an opening tool or your fingernail to flip up the small, hinged locking flap on the digitizer cable's [ZIF connector](#).

Step 19



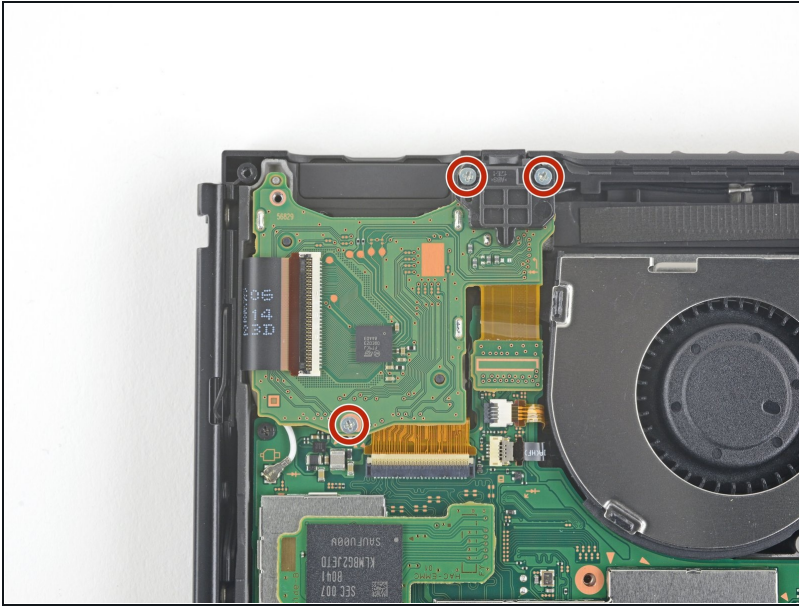
- Use a pair of [tweezers](#) to slide the digitizer cable horizontally out of its connector on the game card reader board.
- ☑ Before inserting the cable during reassembly, make sure the ZIF connector locking flap is [flipped up](#).
- ☑ With the cable **parallel to the board**, gently slide it into its connector.
 - ⚠ **Don't force the cable into the connector. If it doesn't insert, ensure the locking flap is flipped up, reposition the cable, and try again.**
- ⓘ If your touchscreen doesn't work after the repair but your Game Card reader does, make sure this cable is properly inserted. If your Game Card reader also doesn't work, check the Game Card connector in the next step instead.

Step 20



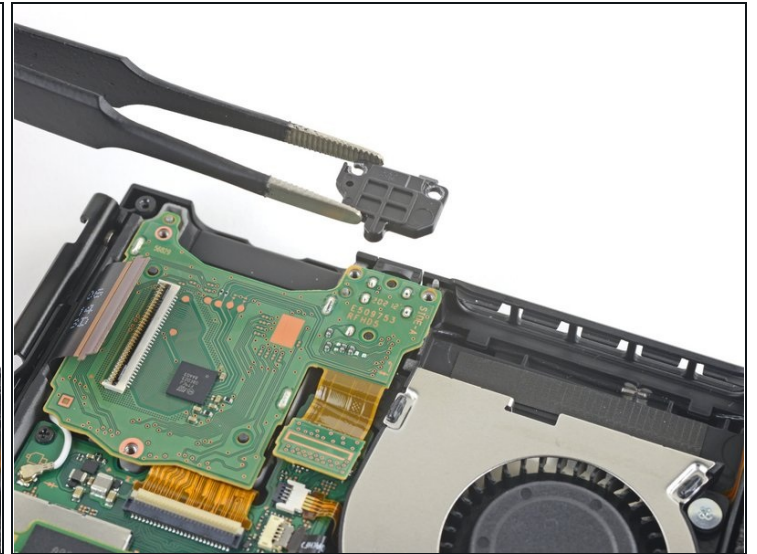
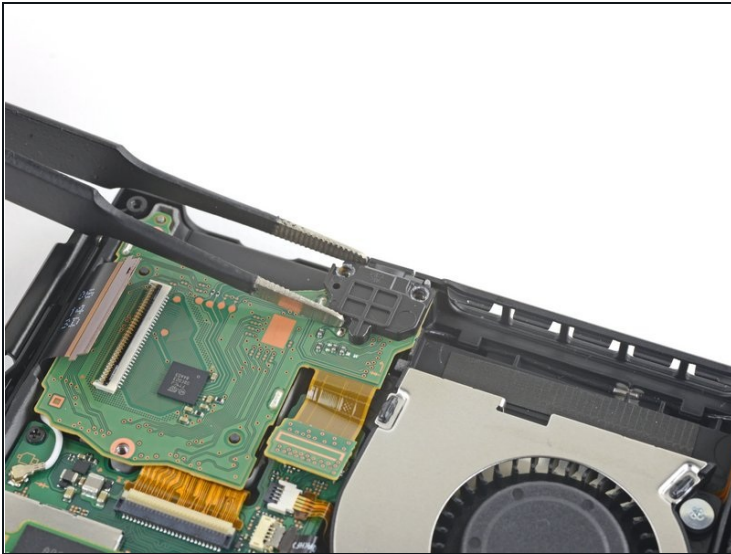
- Use the point of a spudger to pry the headphone jack and game card reader connector straight up to disconnect it from the motherboard.
- ☑ To re-attach [press connectors](#) like this one, carefully align and press down on one side until it clicks into place, then repeat on the other side. Do not press down on the middle. If the connector is misaligned, the pins can bend and cause permanent damage.
- ⓘ If the touch screen doesn't work and/or game cards aren't detected after reassembly, you might have not fully reconnected this press connector. Carefully disconnect it and try again.

Step 21



- Use a JIS 000 screwdriver or an official iFixit PH 000 driver to remove the three 3.1 mm screws securing the headphone jack and game card reader board to the device.

Step 22



- Use a pair of tweezers or your fingers to remove the headphone jack bracket.

Step 23



- Use a pair of tweezers or your fingers to remove the headphone jack and game card reader board.

Compare your new replacement part to the original part. You may need to transfer remaining components or remove adhesive backings from the new part before installing.

To reassemble your device, follow these instructions in reverse order.

If your new game card reader doesn't work after you boot up the device, turn it back off and disconnect and reconnect the battery connector.

Take your e-waste to an [R2 or e-Stewards certified recycler](#).

Repair didn't go as planned? Try some [basic troubleshooting](#), or ask our [Nintendo Switch Answers community](#) for help.