



Dell Inspiron 15-7547 Hard Drive Replacement

The guide shows the process of disconnecting the Dell Inspiron 15-7547's hard drive.

Written By: Isaac Brooks



INTRODUCTION

The guide shows the process of disconnecting the Dell Inspiron 15-7547's hard drive.



TOOLS:

- [Spudger](#) (1)
 - [Phillips #0 Screwdriver](#) (1)
-

Step 1 — Bottom Cover



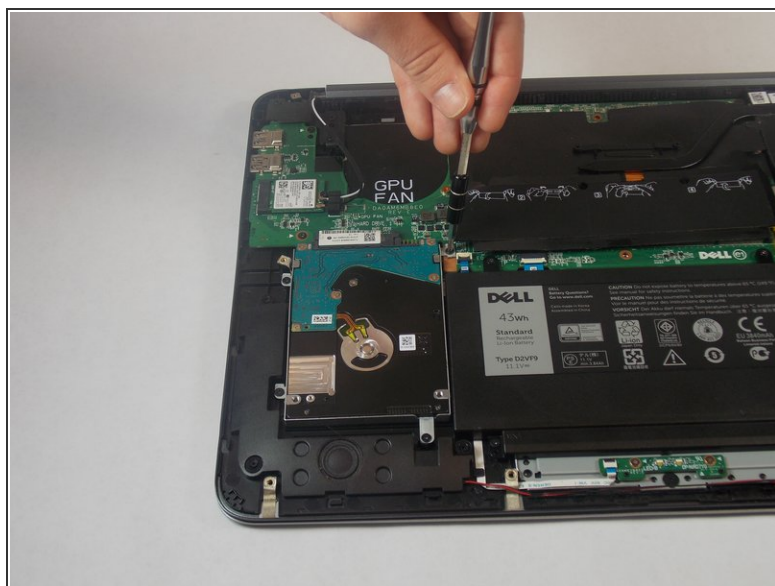
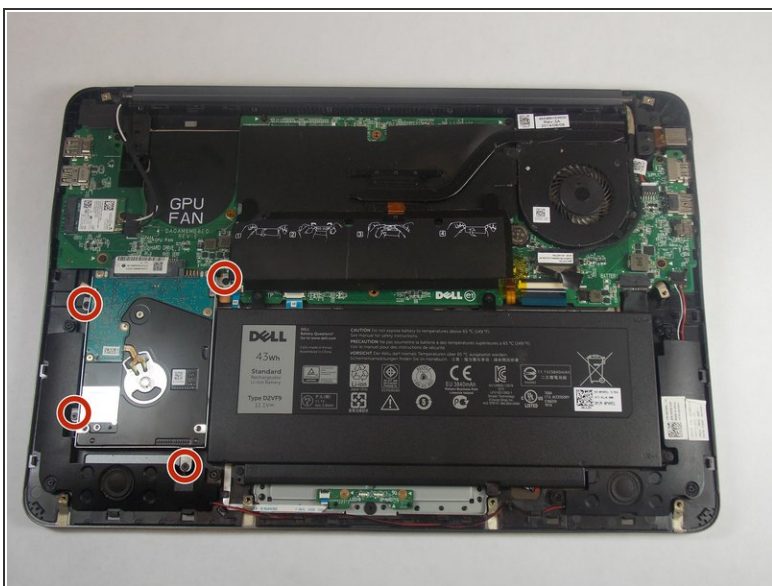
- ❗ Before you begin, be sure to turn off your laptop and unplug it from the outlet.
- Close the display and flip the laptop on its back.
- Loosen the ten 5.0 mm-long Phillips #0 screws.
 - The four screws marked with orange will remain captive to the cover.

Step 2



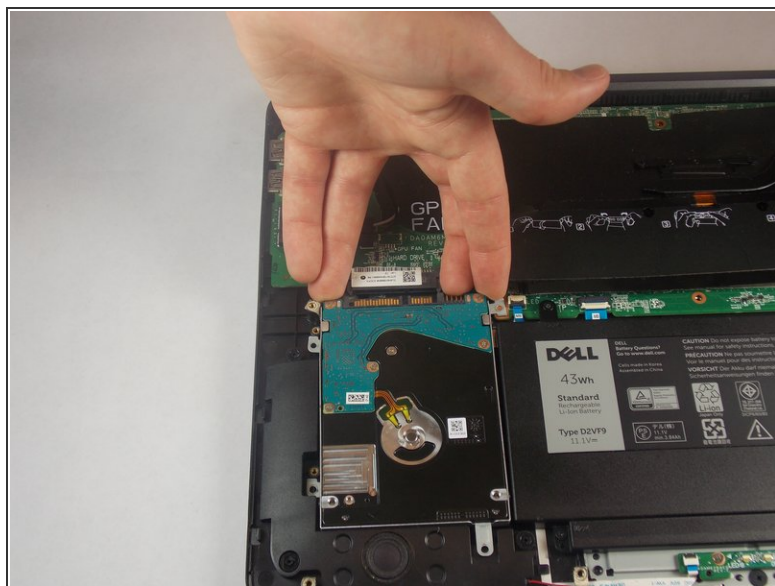
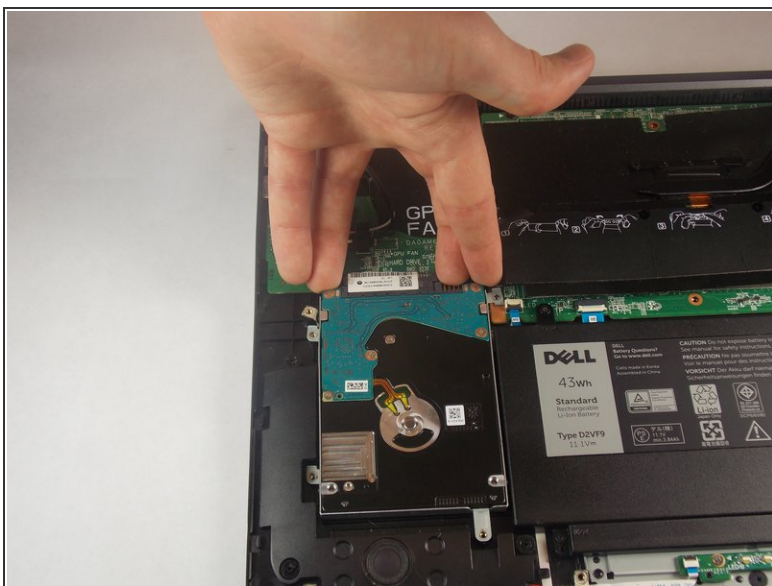
- Use a spudger to pry up and loosen the back cover.
- Remove the back cover.

Step 3 — Hard Drive



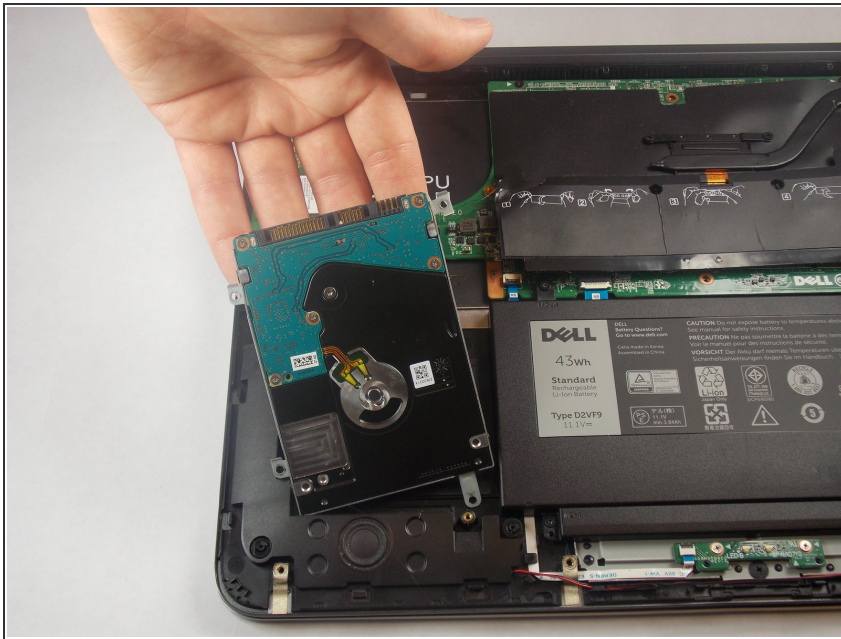
- Remove the four 5.0 mm-long Philips #0 screws connecting the hard drive to the chassis.

Step 4



- Disconnect the hard drive from the motherboard by placing your fingers at the back, and pulling forward towards the front of the chassis.

Step 5



- Lift the hard drive out of the chassis.

To reassemble your device, follow these instructions in reverse order.