



# iHome iH27B iPod Adapter Replacement

The iHome IH27B is a portable alarm clock and...

Written By: John Kraemer



# INTRODUCTION

The iHome IH27B is a portable alarm clock and sound system. This device acts as a dock for the following devices: iPhone 8, 9 and 10. Placing your iPod on and off of the adapter can cause some normal wear and tear to the dock connector. If you have noticed that your dock connector on the dock is loose or appears to be damaged, you may need to replace the iPod connector.

---

## TOOLS:

[Phillips #0 Screwdriver](#) (1)

[iFixit Opening Tool](#) (1)

---

## Step 1 — Adapter



- Set the iHome on a surface facing upward.
- Locate the two screws on the docking station adapter.
- Remove the following screws:
  - Two 10 mm Phillips #0



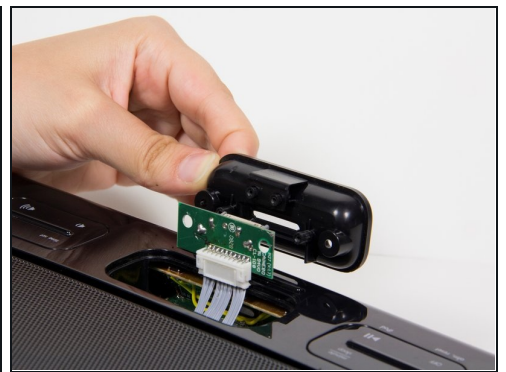
## Step 2



- Grip the plastic adapter case and pull upwards with a medium amount of force. You will have to twist forward a little so that the connections are visible.

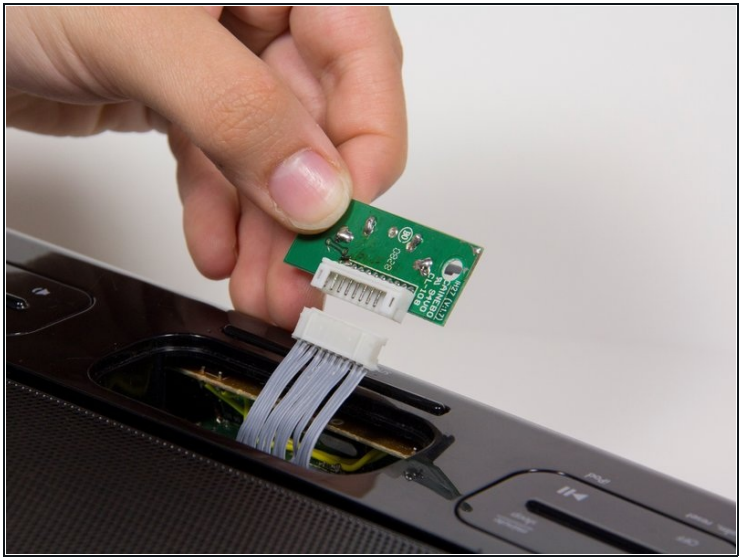
⚠ The adapter will still be connected with wires, so make sure not to pull too hard.

## Step 3



- Remove the following screws:
  - Four 7 mm Phillips #0
- Lift up the two black plastic pieces that have come loose on either side of the circuit board, and set them aside.

## Step 4

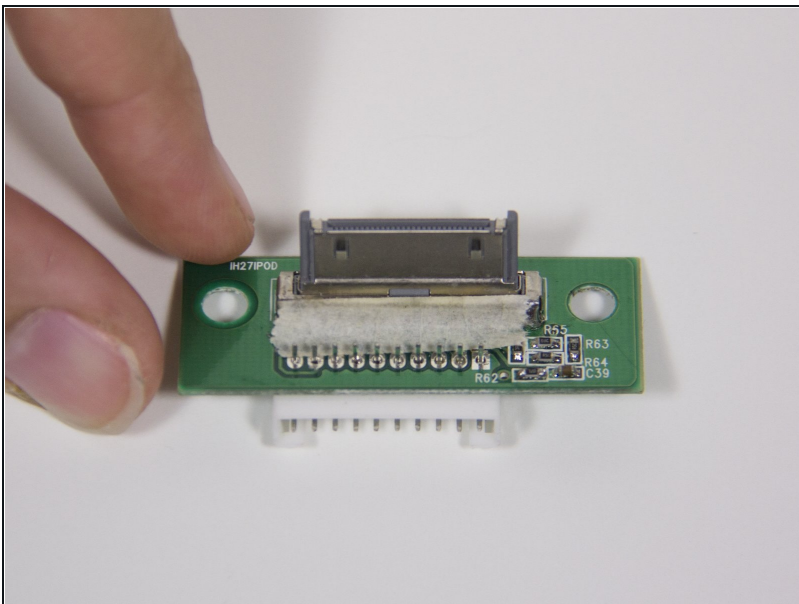


- Carefully pry apart the bundle of white wires connected at the junction with the plastic opening tool.

⚠ Do this slowly. Be careful not to damage the wires

- Lift up the circuit board that has become loose.

## Step 5



- Pull out the adapter, and replace it with the new one.

---

To reassemble your device, follow these instructions in reverse order.