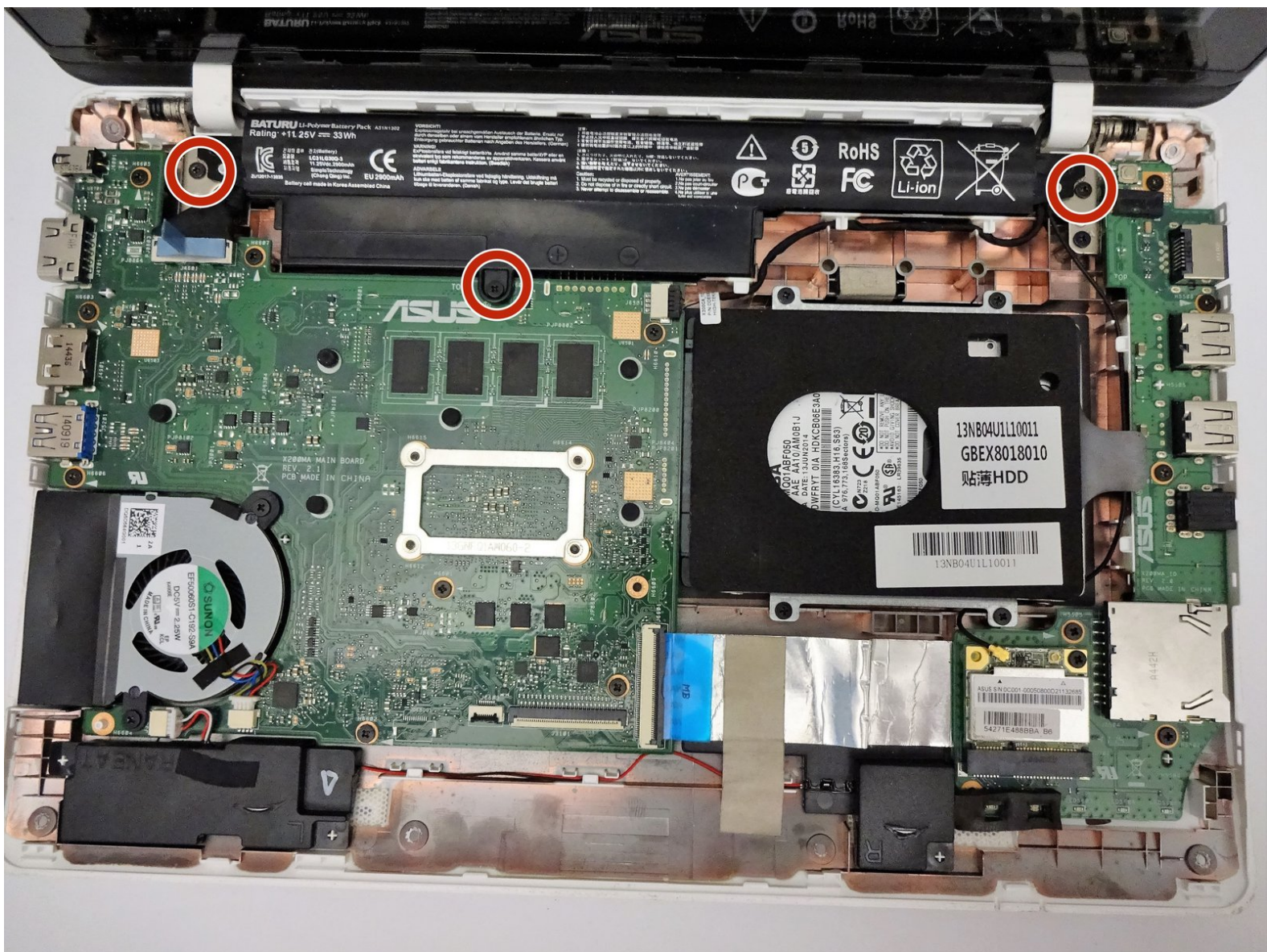




ASUS K200MA-DS01T Battery Replacement

This guide will help to assist in replacements for an Asus K200MA-DS01T battery.

Written By: Aliyah Malapit



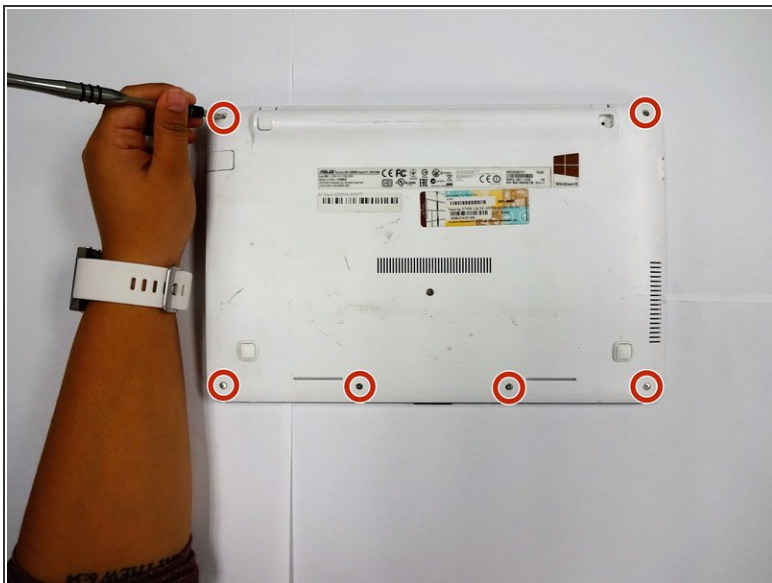
INTRODUCTION

Battery replacements for a Asus K200MA 11.6" laptop can be done easily with this step-by-step guide. Compatible with A31N1302 laptop battery.

TOOLS:

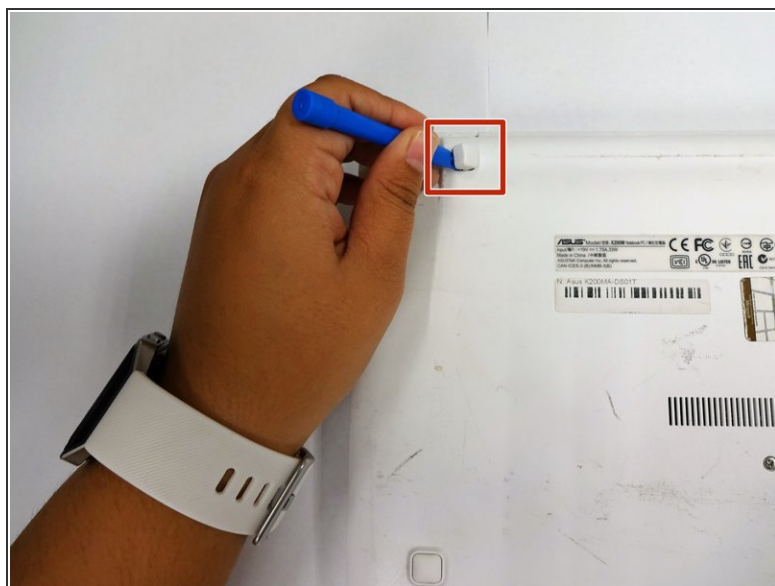
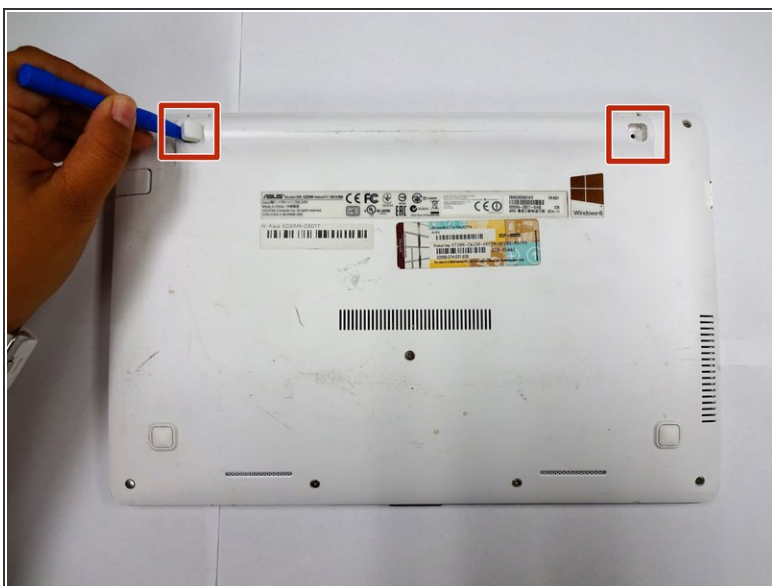
- [Spudger](#) (1)
 - [Phillips #0 Screwdriver](#) (1)
 - [iFixit Opening Tools](#) (1)
-

Step 1 — Back Panel



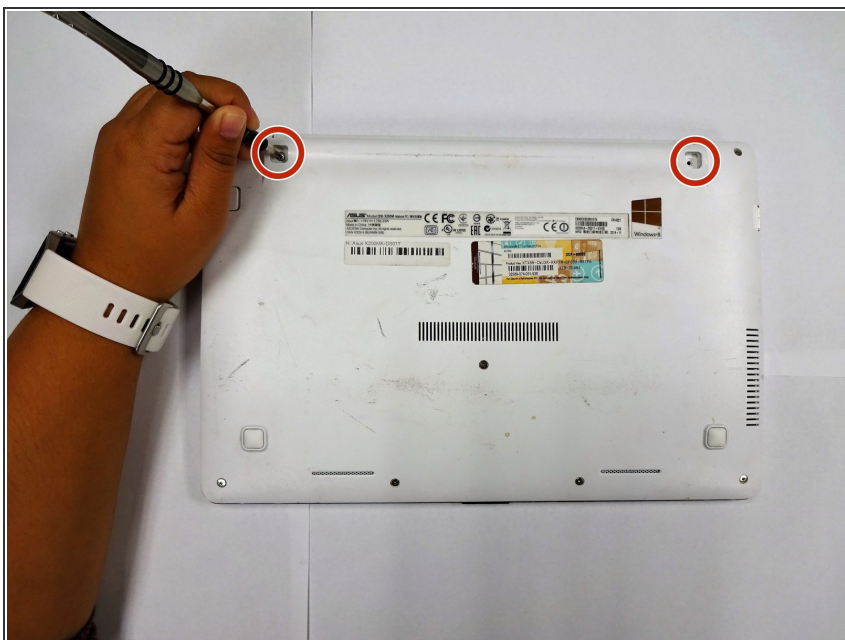
- With the opening facing you, flip the laptop over and remove the following screws from the back panel:
 - Six 4mm Phillips screws using a Phillips #0 screwdriver.
 - One 12mm Phillips screw in the center using a Phillips #0 screwdriver.

Step 2



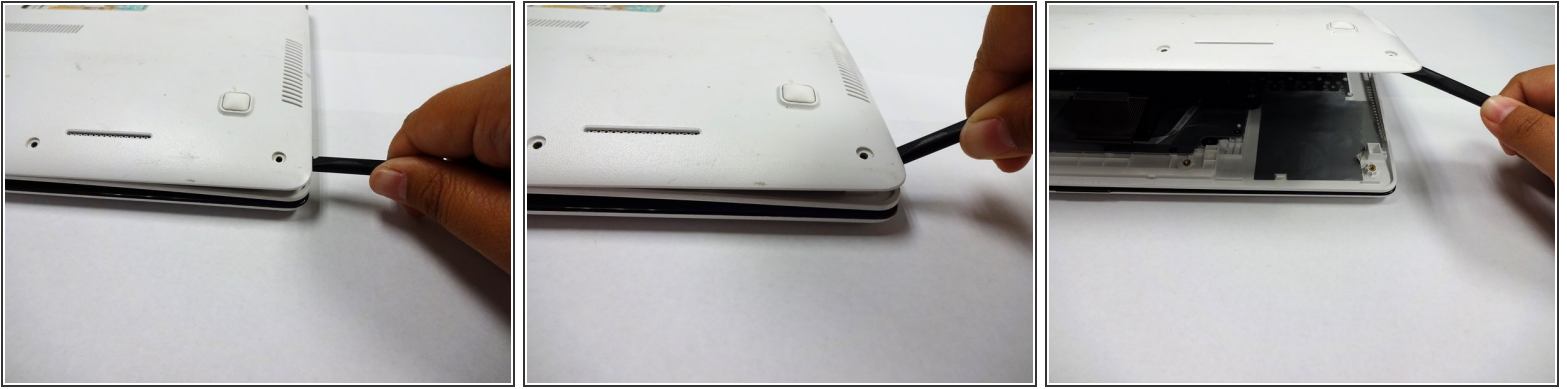
- Using a plastic spudger, remove the two rubber stoppers closest to the hinge to reveal the screws underneath.

Step 3



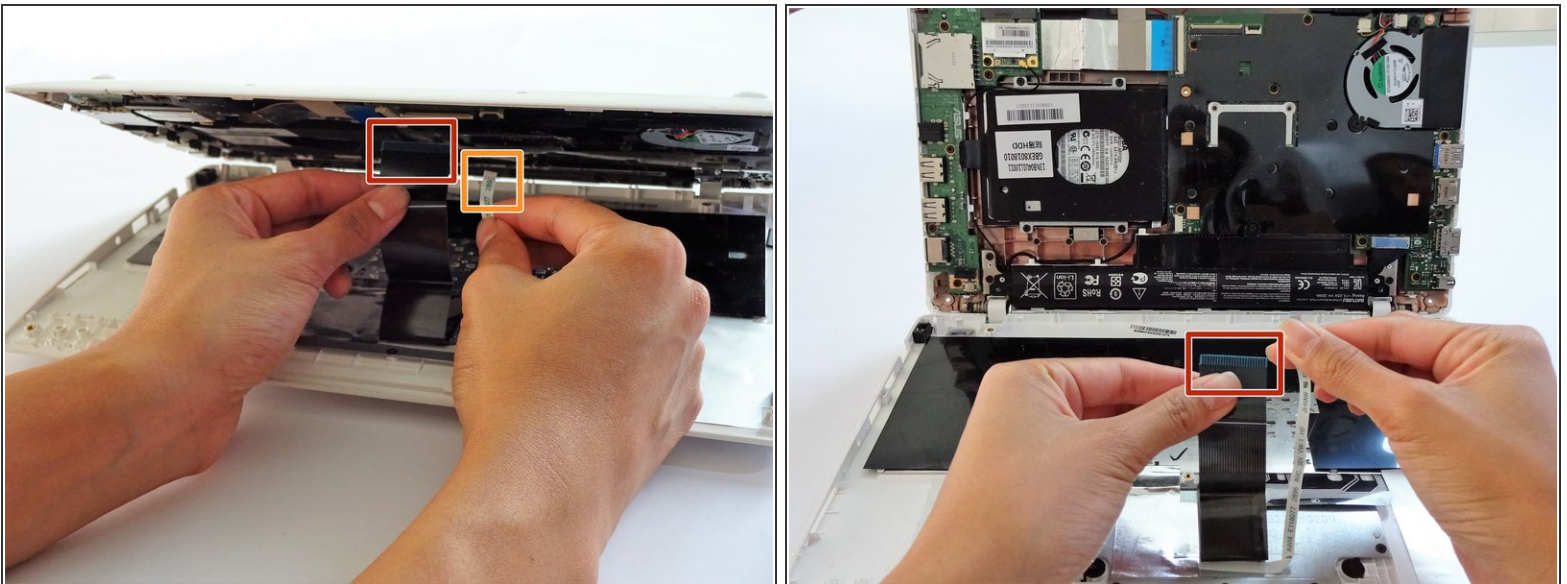
- Remove the following screws:
 - Two 4mm Phillips screws using a Phillips #0 screwdriver.

Step 4



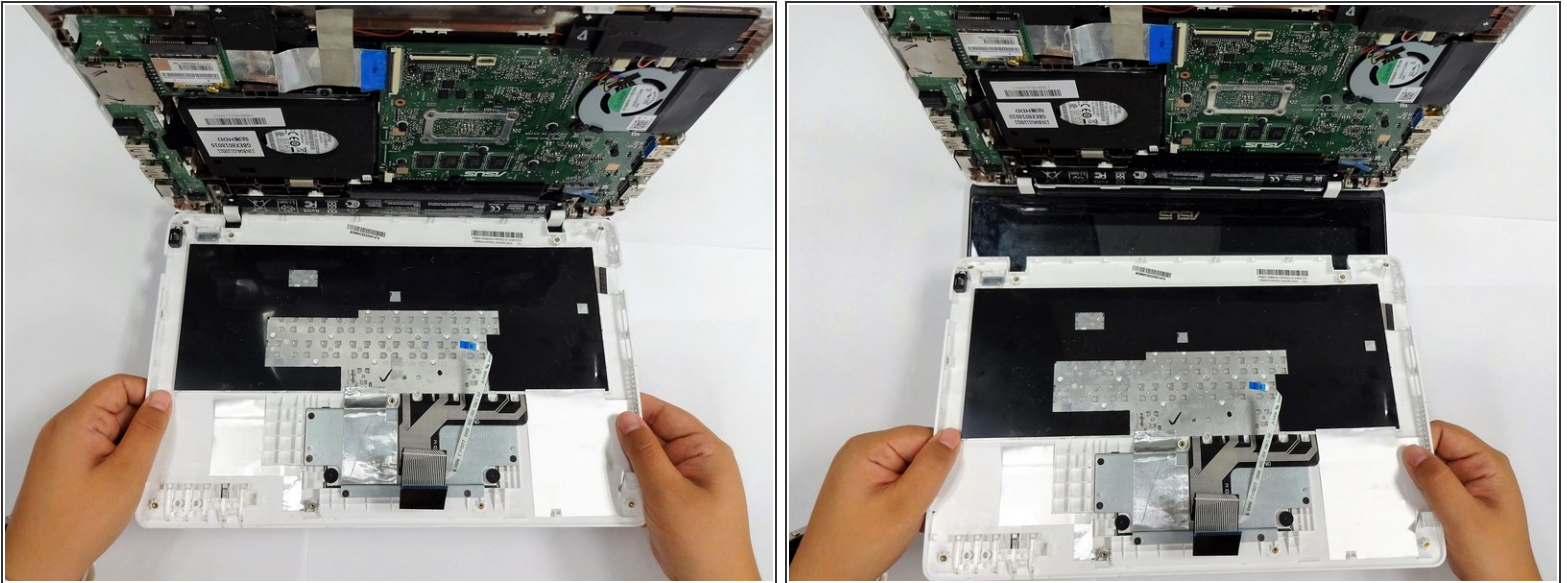
- Using a plastic spudger (and a fair amount of force), pry the back panel up from the keyboard to separate.
- ❗ You may have to use one spudger to wedge between the back panel and keyboard while using another to pry it open in a different spot.

Step 5 — Keyboard



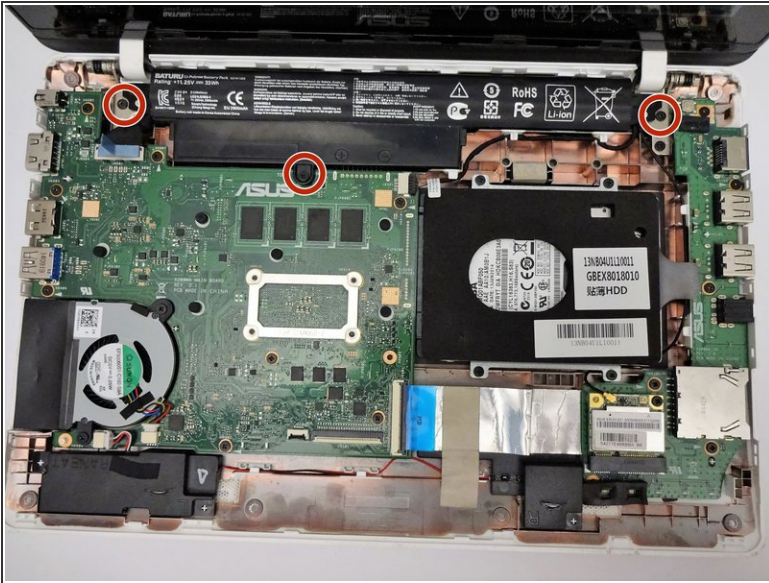
- To disconnect the keyboard connectors from keyboard and back panel, gently pull wide keyboard connector out.
- Gently pull the narrow connector away from the keyboard.

Step 6



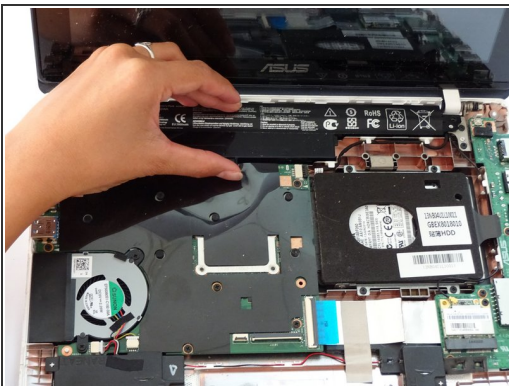
- Now that the keyboard connectors are unplugged, pull the keyboard off and away from the back panel hinges.

Step 7 — Battery



- Flip the computer over so that the side with the motherboard (large green piece) is laying face-up.
- Remove the following screws from the middle and far ends of the battery:
 - Three 4mm Phillips screws using a Phillips #0 screwdriver.
- ❗ The battery will be located closest to the screen.

Step 8



- Gripping the wider left section, lift the battery up and away from computer.

To reassemble your device, follow these instructions in reverse order.

