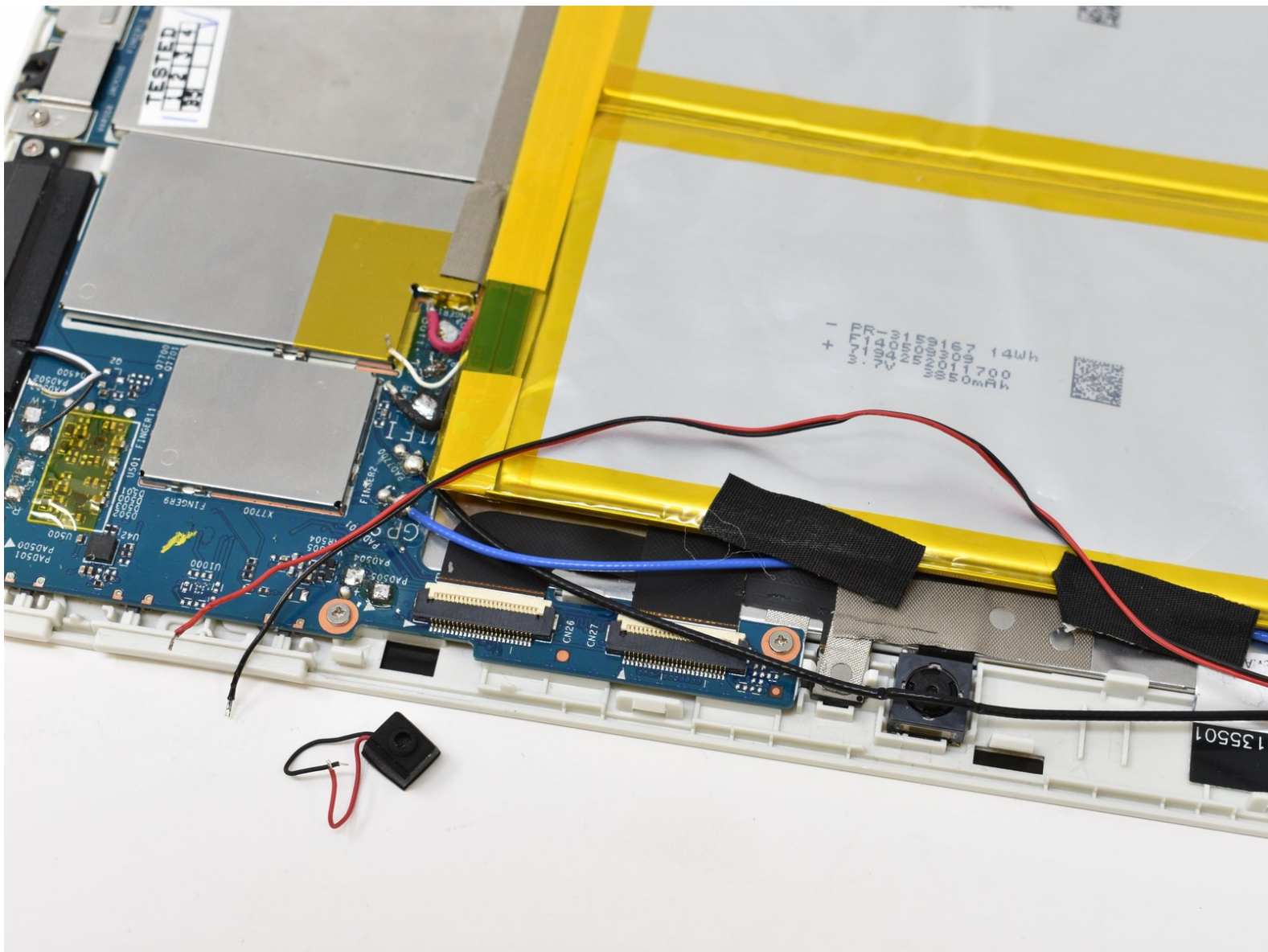




Written By: Bryce Harmsen



Page 1 of 5

INTRODUCTION

The microphone is soldered into the motherboard. This guide requires a knowledge of soldering. The back panel must be removed to access the microphone.



TOOLS:

- [iFixit Opening Tools](#) (1)
 - [Soldering Iron](#) (1)
-

Step 1 — Back Panel



- Identify the SD card port.

Step 2



- Insert the smallest plastic opening tool into the SD card port. Gently pry until the back panel separates from the screen panel.

⚠ Do not insert opening tool too far.
Avoid making contact with the metal inside the port.

Step 3



- Slide the opening tool along the seam between the back panel and the screen panel, prying the panels apart as you move around the edges.

Step 4



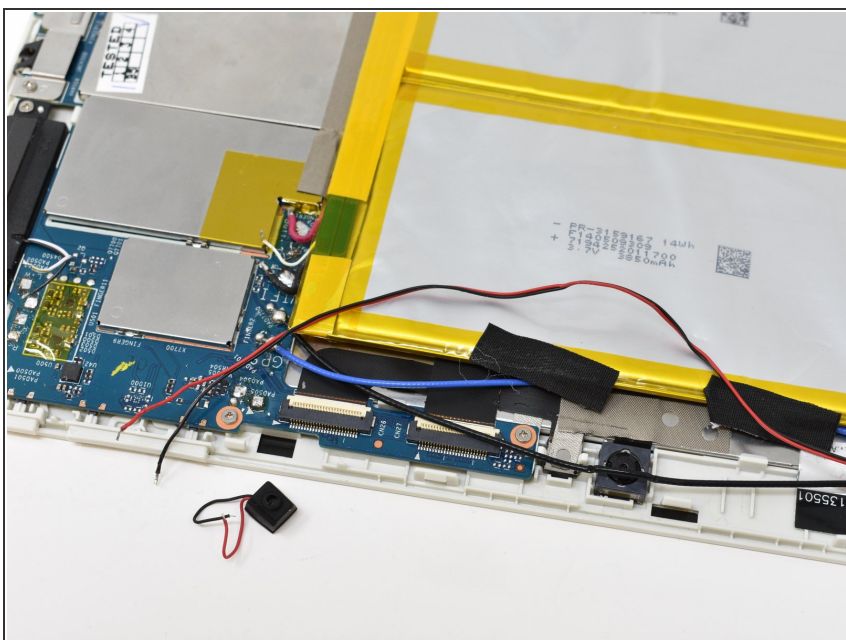
- Separate the back panel from the rest of the device.

Step 5 — Microphone



- Desolder the microphone wires from the motherboard.

Step 6



- Separate the microphone from the rest of the device.

To reassemble your device, follow these instructions in reverse order.