



# HP Mini 210 RAM Replacement

Replace your RAM (random access memory) module if it malfunctions or if you want to upgrade the memory.

Written By: Heather Freed



## INTRODUCTION

Installing new RAM (random access memory) on your netbook is quick and requires little disassembly.



### TOOLS:

- [Spudger](#) (1)



### PARTS:

- [PC2-6400 2 GB RAM Chip](#) (1)

## Step 1 — Battery



- i** Turn off and unplug the netbook before replacing the battery.

  - Hold the netbook top-side down with the lid closed.
  - Slide the plastic battery release latches towards the lock symbols.
- i** The left tab unlocks completely, but you will need to hold the right tab towards the lock symbol as you remove the battery.

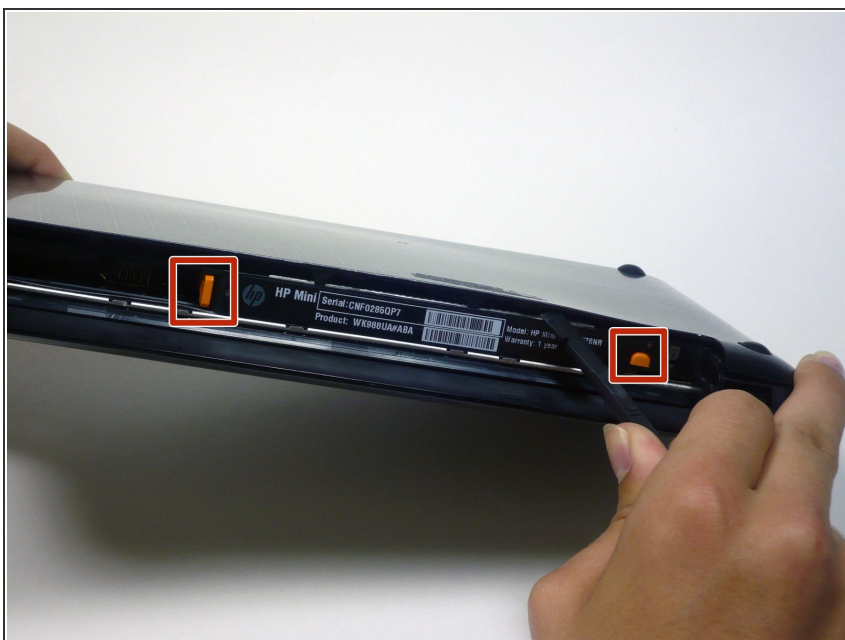


## Step 2



- Slide the battery out from the netbook.

## Step 3 — Disassembling HP Mini 210 Back Case



- Turn the netbook to view its edge.
- Press both orange eject buttons simultaneously, and use a spudger to pry off the back case.

## Step 4



- If the back case does not separate from the netbook easily, use the spudger to pry off the back case by the edge near the battery compartment, and work your way to the sides. The case will then pivot along the front edge.

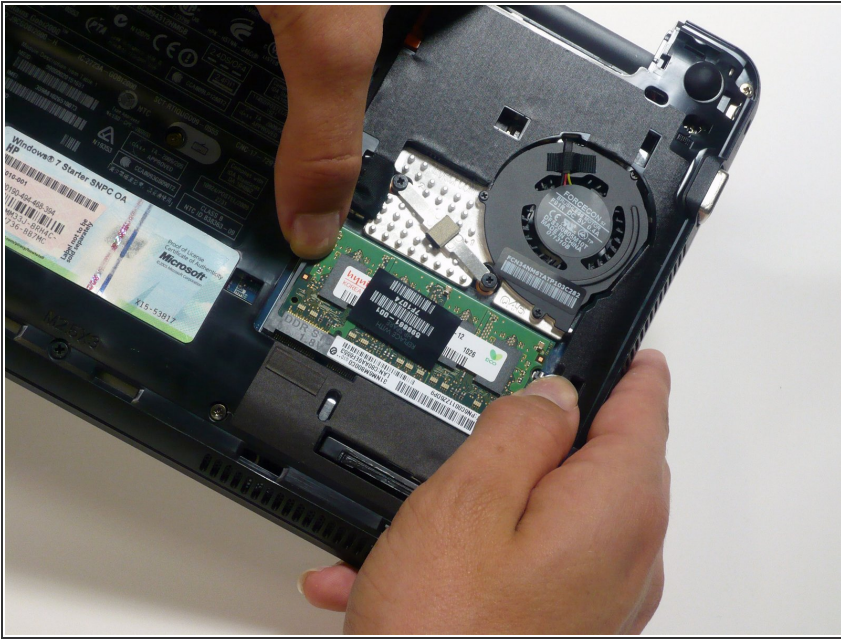
## Step 5



- Pull the back case off from the front edge.



## Step 6 — RAM



- Push out the two plastic prongs on either side of the RAM.

## Step 7



- ① The RAM should pop up allowing for easy removal from its compartment.
- Pull out the RAM.

To reassemble your device, follow these instructions in reverse order.