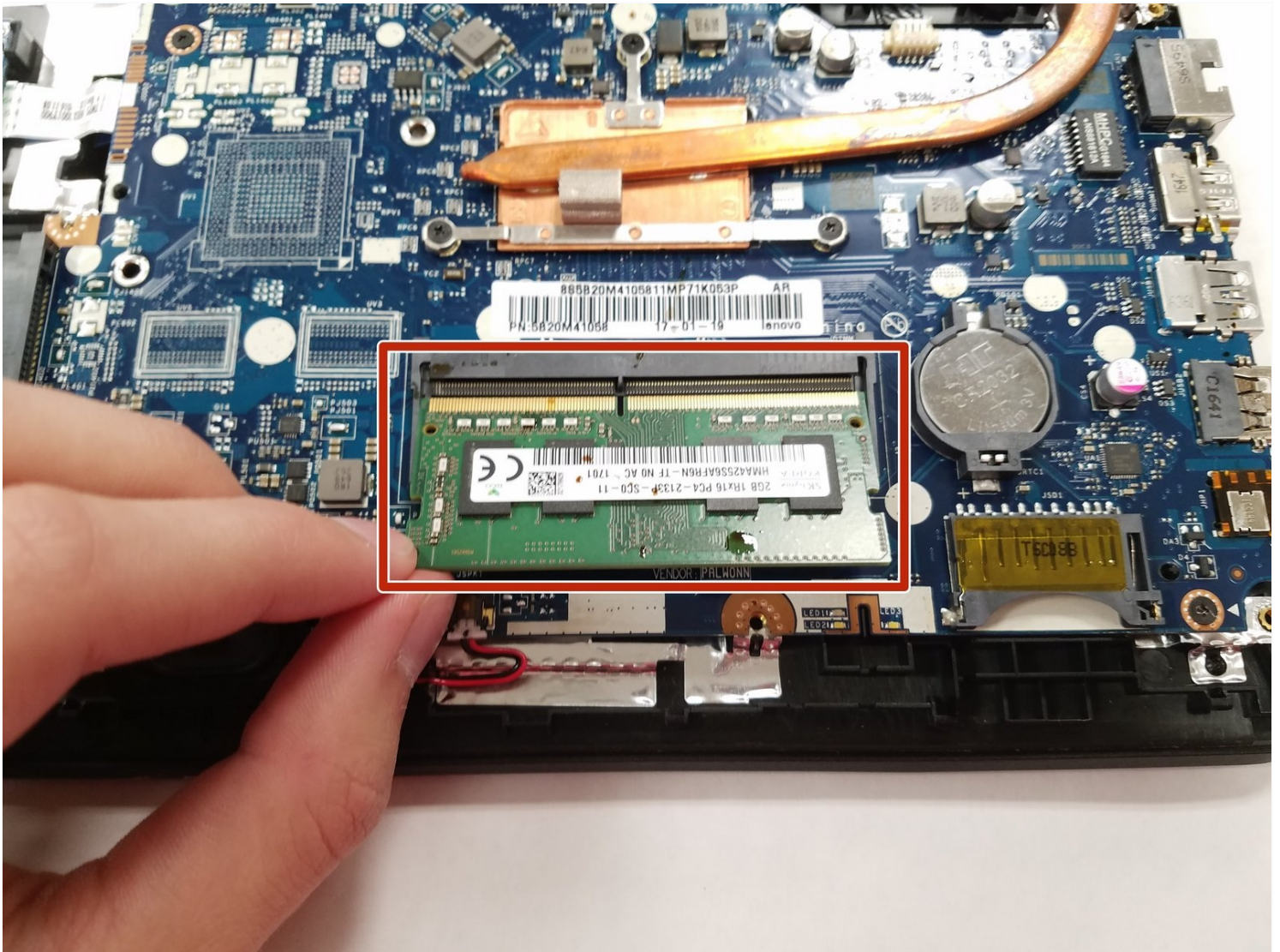




# Lenovo IdeaPad 110-15ISK RAM Replacement

If the device does not load past the Lenovo...

Written By: Jakub Szark



# INTRODUCTION

If the device does not load past the Lenovo loading screen, then there might be a problem with the amount of RAM or a damaged RAM. Another indicator of there being a problem with the RAM is if a RAM failure message occurs on the screen. Follow the guide to replace the RAM.

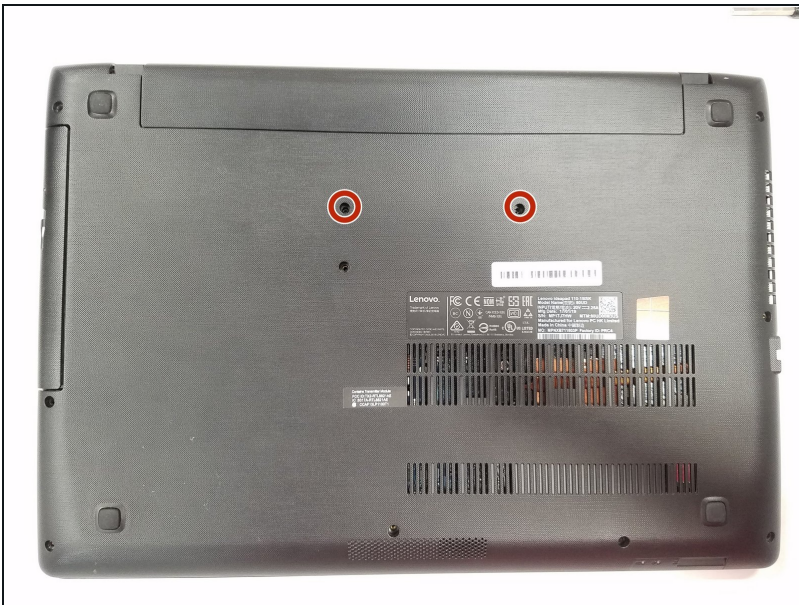
## TOOLS:

[Phillips #1 Screwdriver](#) (1)  
[iFixit Opening Tool](#) (1)  
[Spudger](#) (1)

## PARTS:

[5M30K59787 - Lenovo Laptop Memory - Genuine](#) (1)

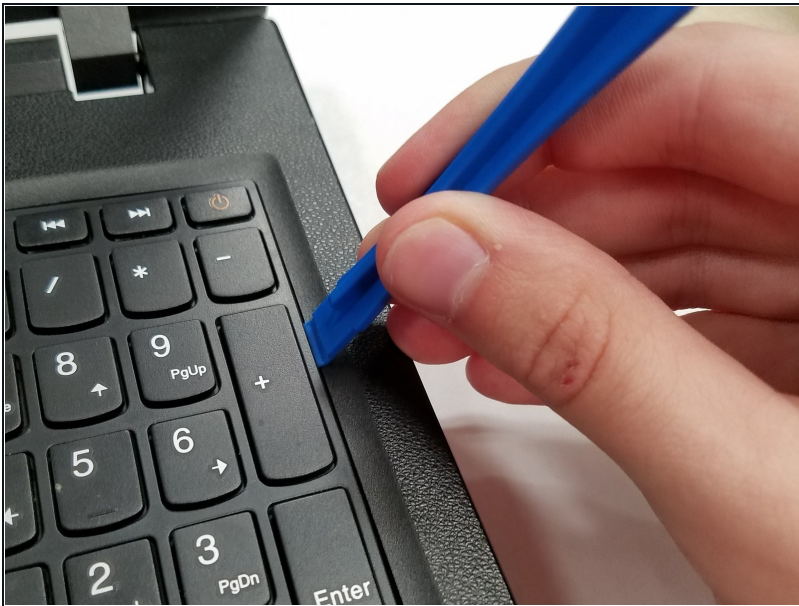
## Step 1 — Keyboard



- Flip the IdeaPad bottom side up.
- Using a Phillips #1 screwdriver, remove the two 6.0mm screws on the back panel, that hold the keyboard.
- Flip the computer back to top facing.

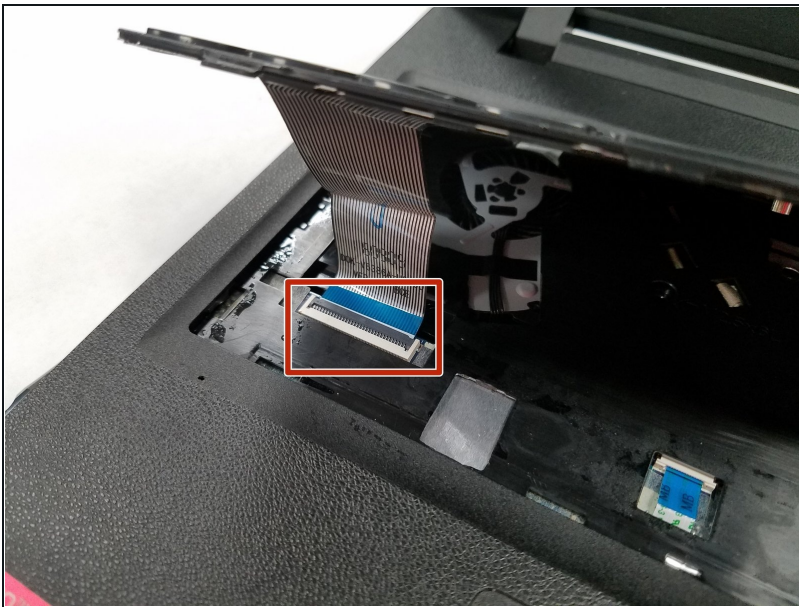


## Step 2



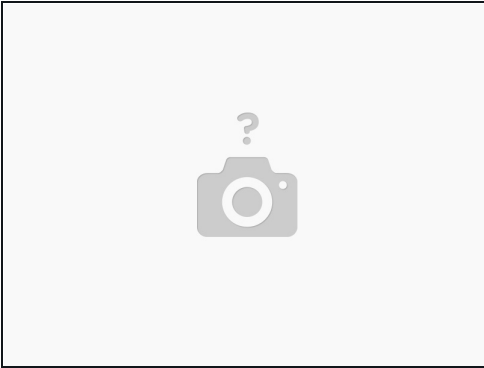
- Open the lid.
- Use the plastic opening tool to pry the keyboard up and away from the bottom assembly.

## Step 3



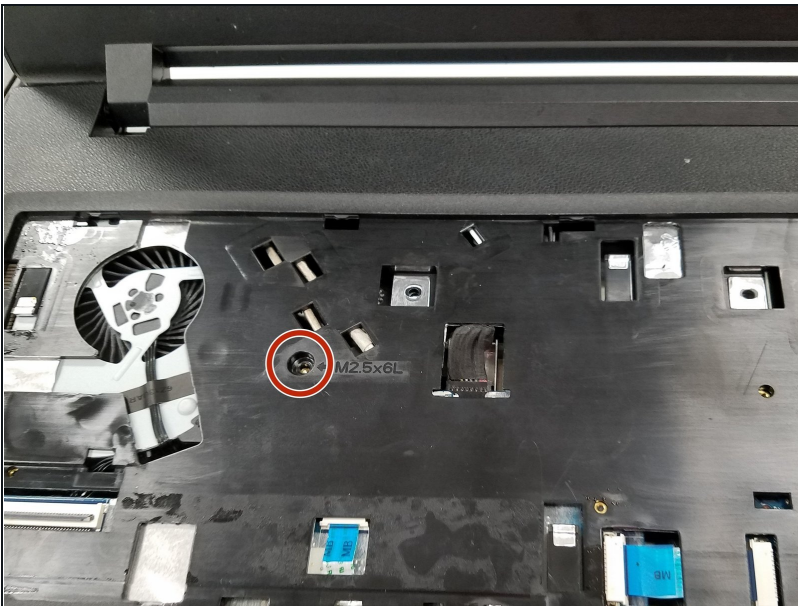
- Next disconnect the keyboard cable by using the tip of the spudger or your finger to lightly push out the ribbon from the contact port.
- Completely remove the keyboard from the bottom assembly.

## Step 4



- Unlock the ZIF connector before pulling the cable out

## Step 5 — Optical Drive



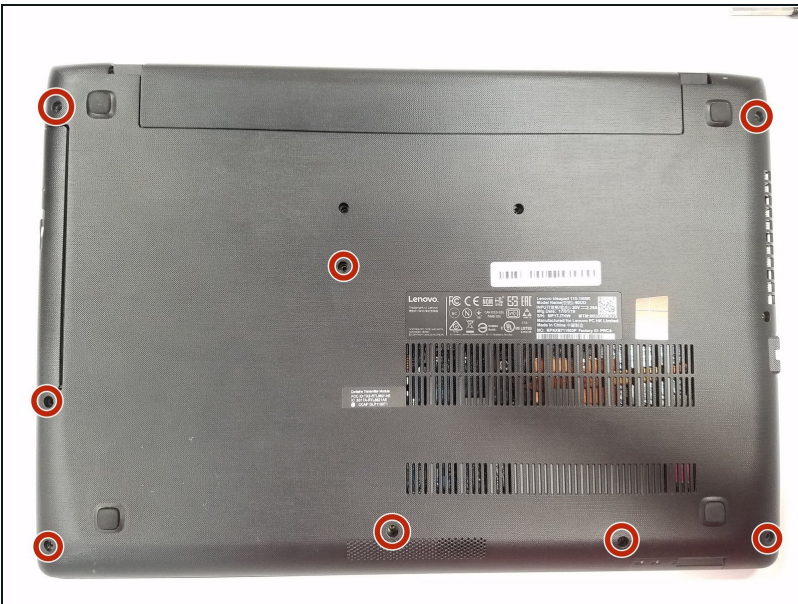
- Using a Phillips #1 screwdriver, unscrew the one 5.0mm screw on the back panel.

## Step 6



- Flip the laptop to its back and the optical drive is located at the top left corner.
- Remove the optical CD DVD drive by lightly pulling it out of the assembly.

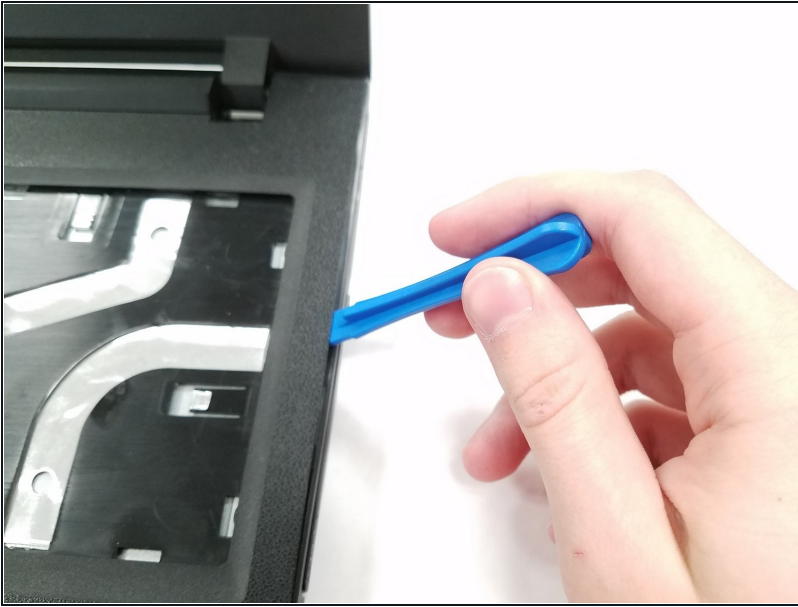
## Step 7 — Upper Case



- Place the laptop bottom facing up.
- Using a Phillips #1 screwdriver, remove the remaining eight 6.0mm screws on the back panel.
- Flip the computer back to top facing.



## Step 8



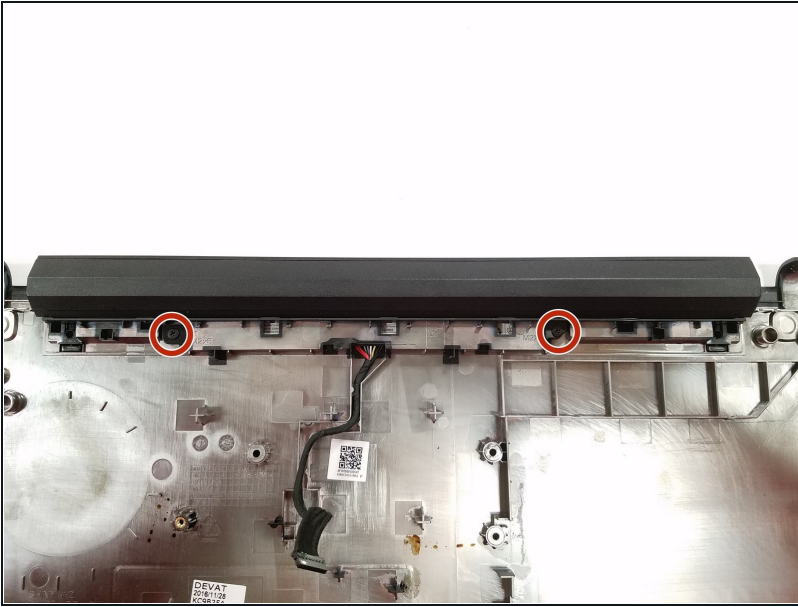
- Separate the top case from the bottom using a plastic opening tool.
- Continue prying the top and bottom case from each other all around the perimeter of the laptop.

## Step 9 — Battery



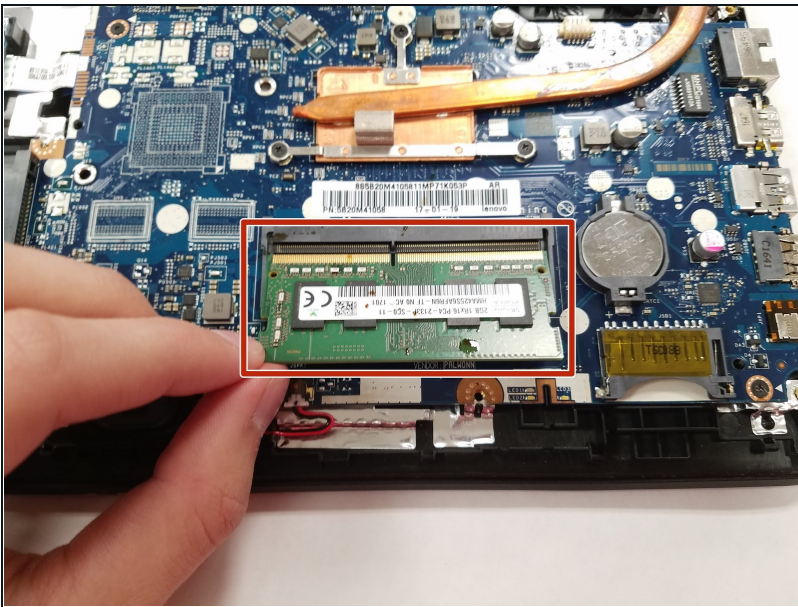
- Turn the laptop upside down and gently pry the top case free from the bottom case.

## Step 10



- The battery is attached to the bottom case of the laptop.
- Remove the two 4.0mm screws.
- Push the battery component away from you in order to completely remove the battery from the fixture.

## Step 11 — RAM



- On the back panel, the RAM is located at the bottom of the logic board.
- Press the silver two hinges at the bottom corners of the RAM to loosen the RAM.
- Remove the loosened RAM from the back panel.

To reassemble your device, follow these instructions in reverse order.