



# Toshiba Satellite C55-A5300 Keyboard Replacement

Instructions on how to remove and replace the keyboard on a Toshiba Satellite C55-A5300 laptop.

Written By: David Burleson



# INTRODUCTION

This guide will help you if you need to replace the keyboard in your laptop. Replacing the keyboard will fix any audio issues caused by a faulty keyboard. It is very straightforward and can be completed regardless of technical knowledge or skill level.



## TOOLS:

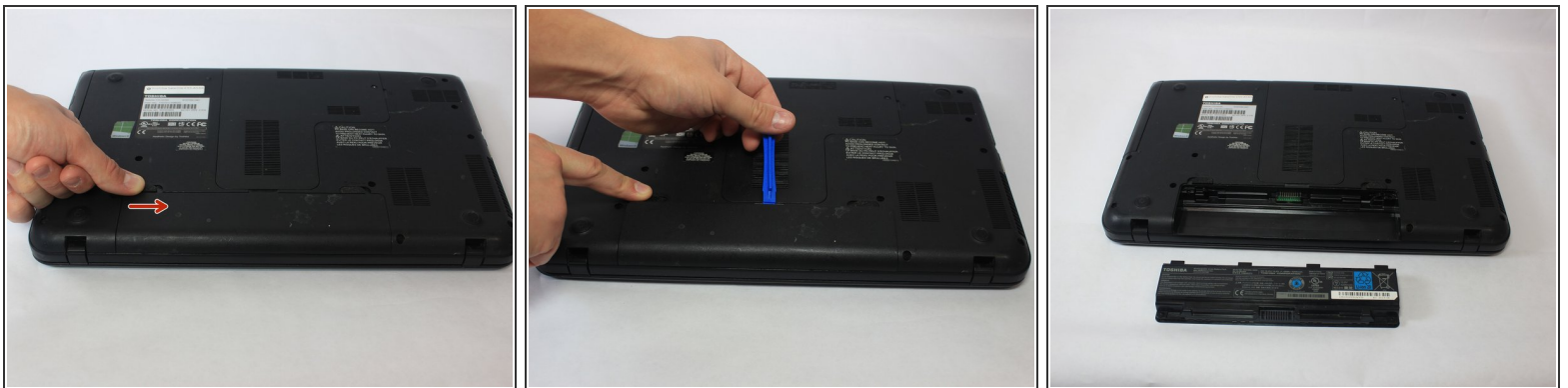
- [iFixit Opening Tools](#) (1)
  - [Phillips #1 Screwdriver](#) (1)
  - [Spudger](#) (1)
-

## Step 1 — Battery



- With the Laptop off, turn it over.
- The battery is located next to the screen hinges.
- Move the locking tab located directly above the battery on the right side, all the way to the left. It will stay in place by itself.

## Step 2



- Slide the tab identical to the first one on the right side above the battery pack to the right. This tab is spring loaded, so be sure to hold it.
- Insert your tool or your fingernail into the notch just above the center of the battery pack, and lift the battery pack out of the device.

## Step 3 — Hard Drive



- Unscrew the screw on the back panel of the laptop covering the hard drive.

## Step 4



- Use the plastic opening tools to remove the panel.

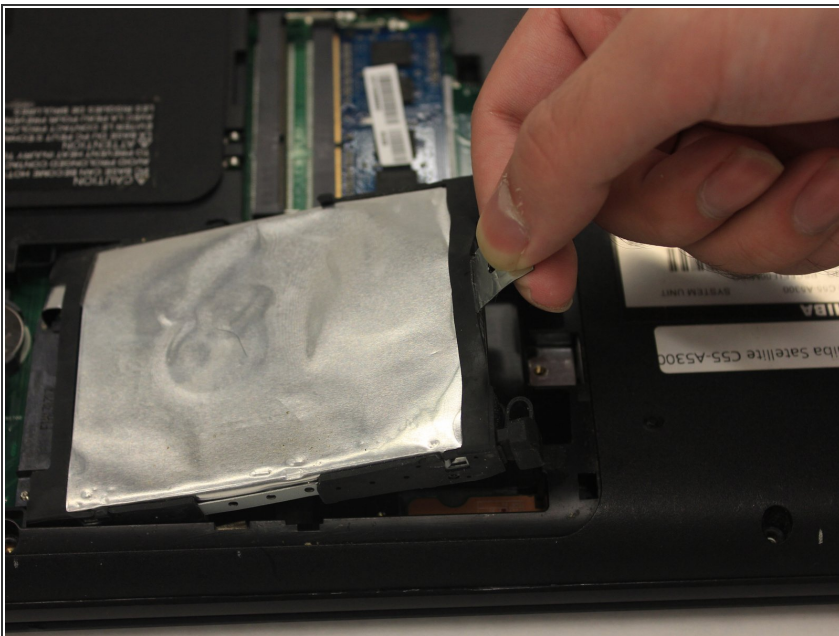


## Step 5



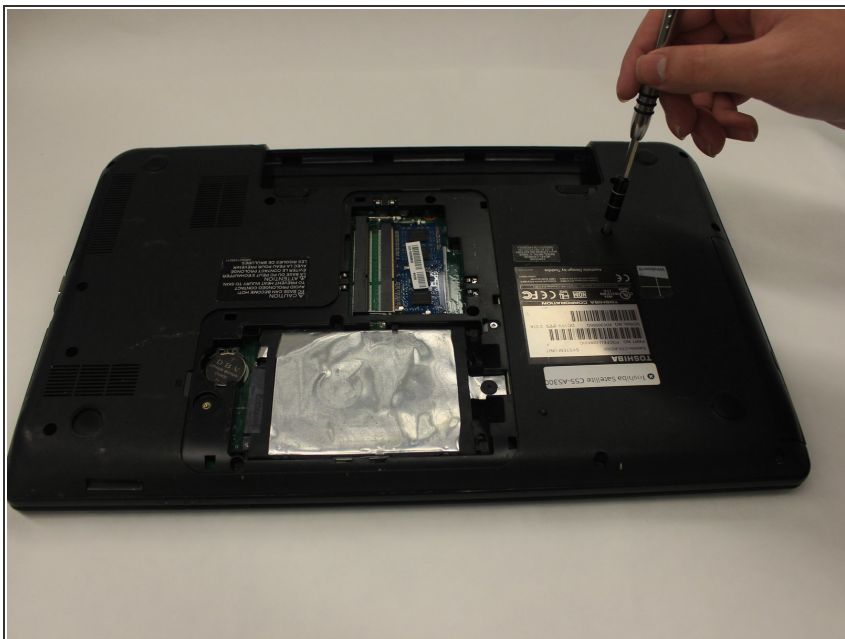
- Remove the screw next to the hard drive using the PH1 screwdriver.

## Step 6



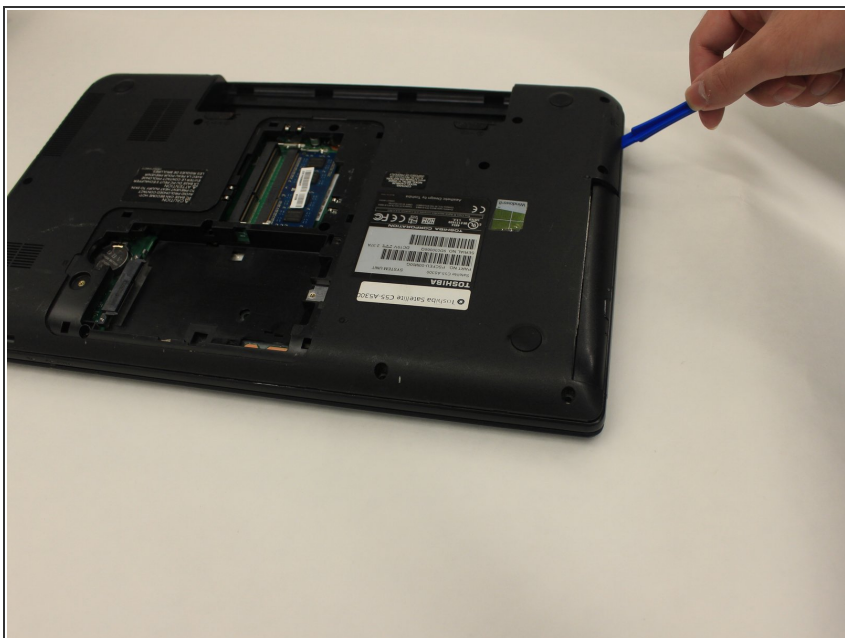
- Pull the silver tab connected to the hard drive up to take it out.

## Step 7 — Fan



- Using the PH1 screwdriver, remove the remaining screws from the back casing of the laptop.

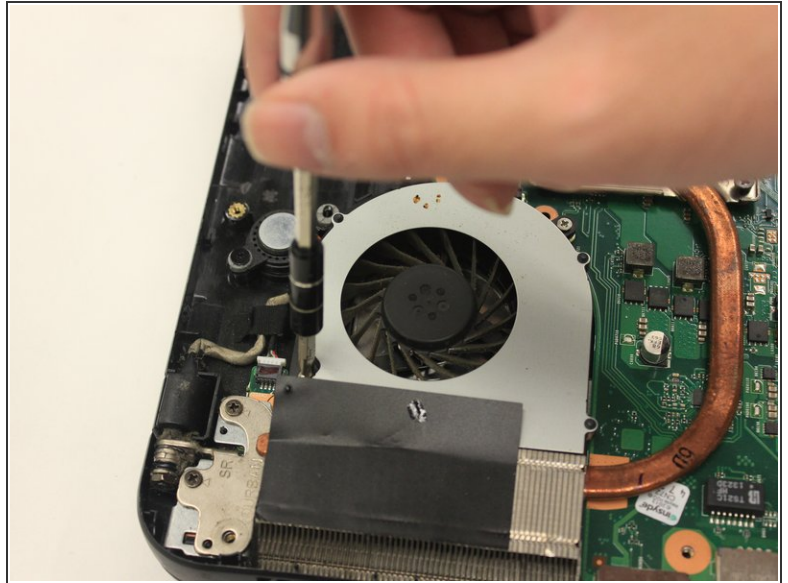
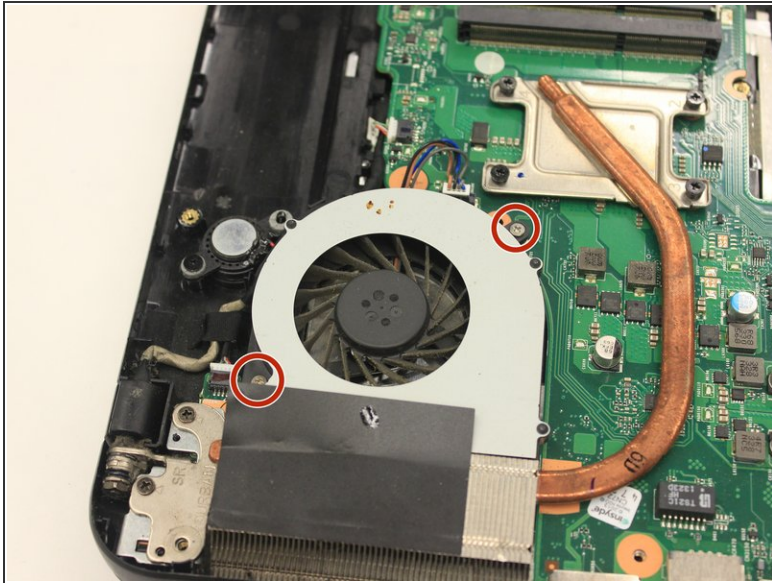
## Step 8



- Use a nylon spudger or plastic opening tool to carefully wedge the casing apart and remove the back plate of the laptop.

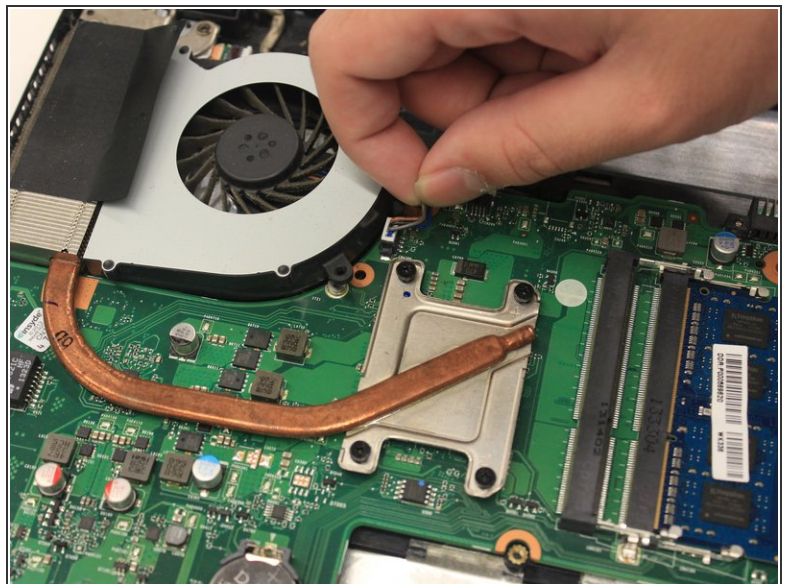
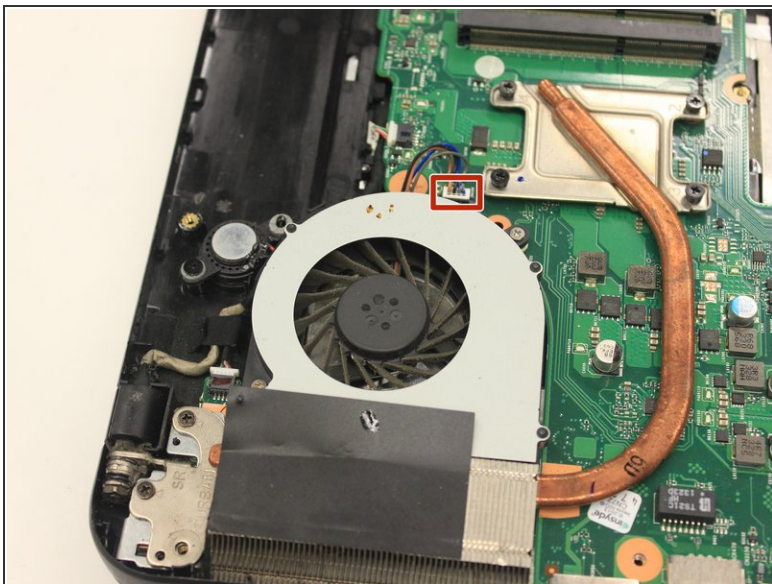


## Step 9



- Remove the 2 screws holding the fan in place.

## Step 10



- Detach the multi-colored wire connecting the fan to the motherboard and pull the fan out.

## Step 11 — CD Drive



- Remove the screw to the top right of the hard drive using the PH1 screwdriver.

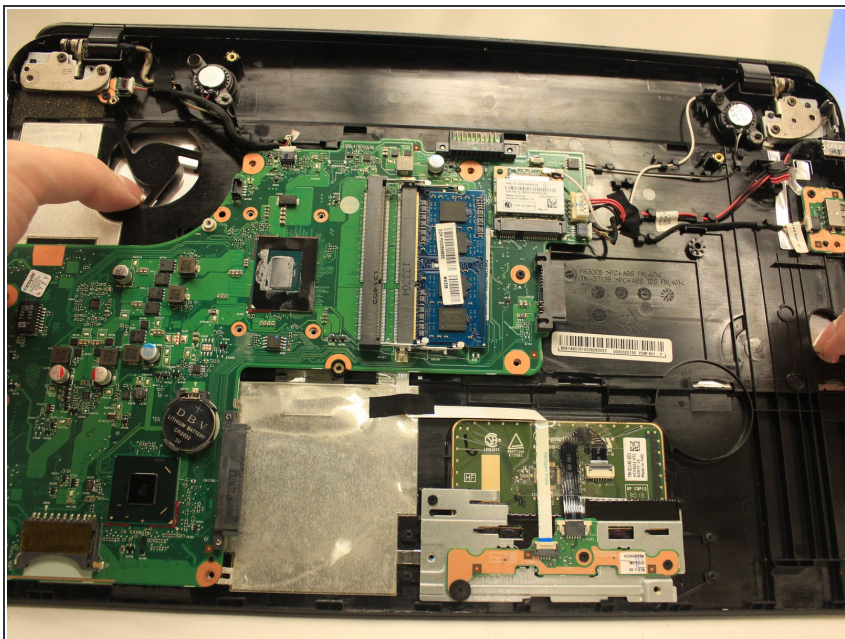
## Step 12



- Use the plastic opening tool to wedge between the CD Drive and the laptop casing and gently pull it out.

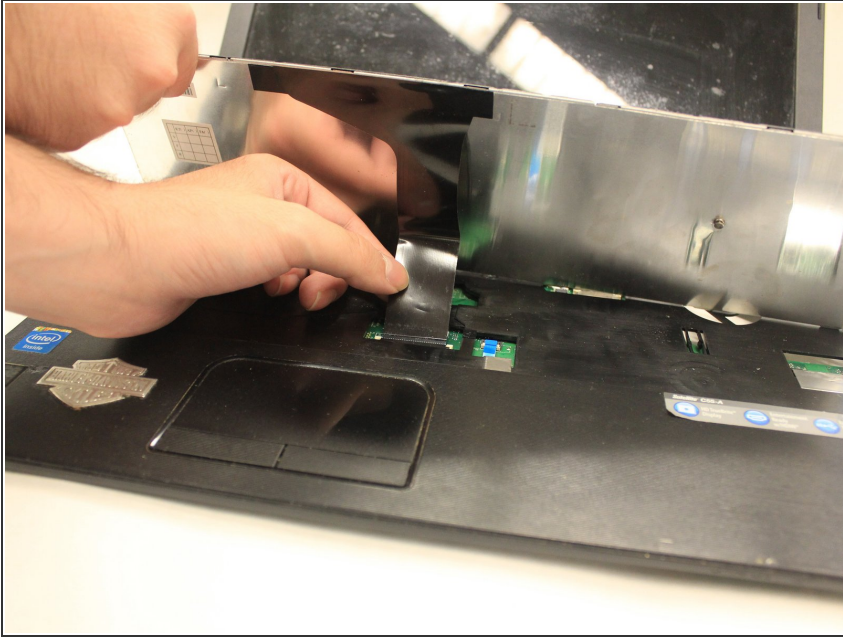


## Step 13 — Keyboard



- The screws holding the keyboard in place have already been removed along with the back panel, so just push the keyboard out of the laptop by pushing your fingers through the holes under the fan and CD drive.

## Step 14



- Once the keyboard is hanging out of the laptop, separate it from the device by pulling out the tab connecting the keyboard to the motherboard.

To reassemble your device, follow these instructions in reverse order.