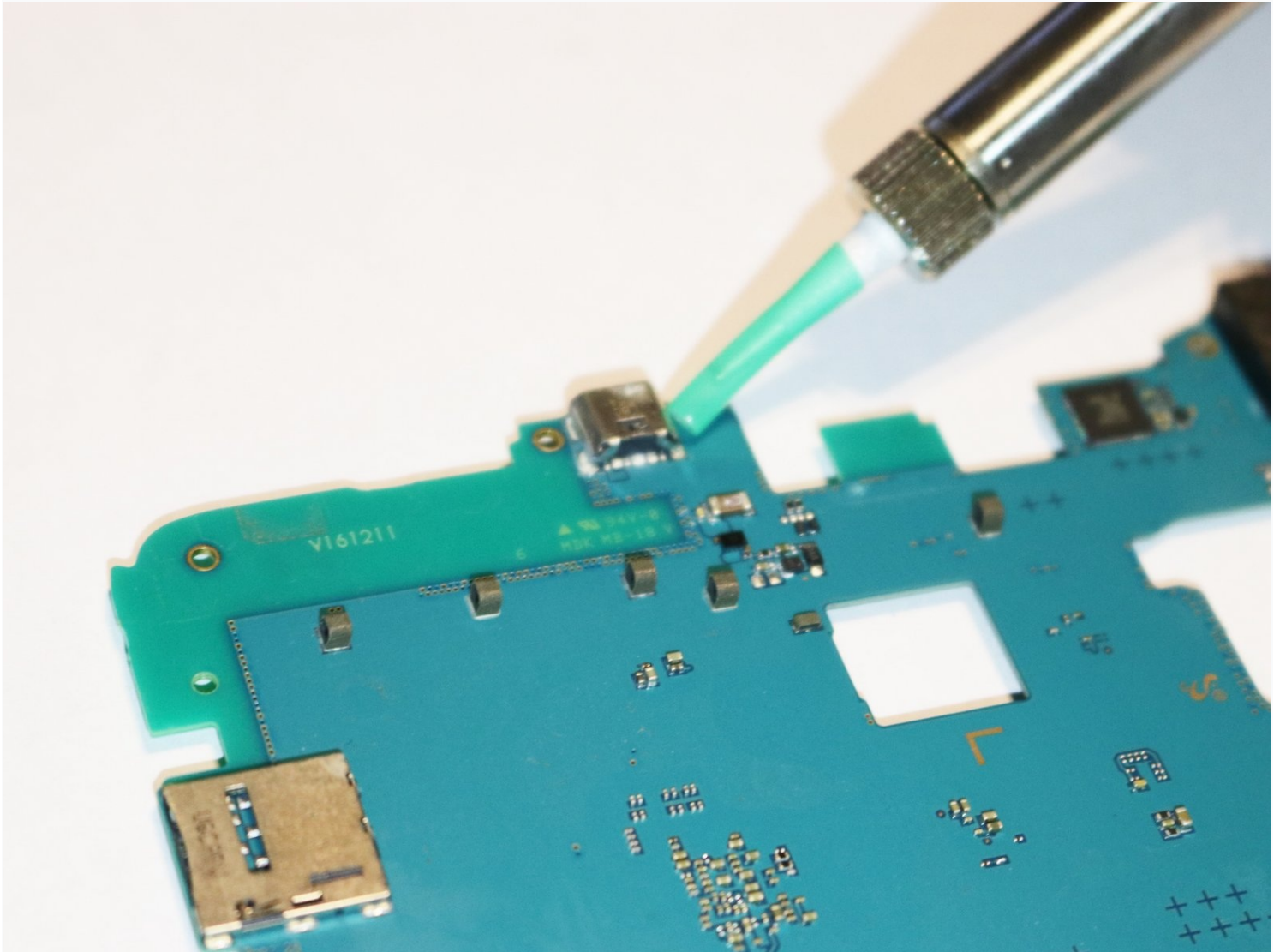




Samsung Galaxy Tab E 8.0 Charging Port Replacement

The charging port of the Samsung Galaxy Tab E...

Written By: Christian Bloemhof



INTRODUCTION

The charging port of the Samsung Galaxy Tab E 8.0 may not be functional due to internal damages or overuse. This guide will show you how to replace the charging port, which is attached to the motherboard.

TOOLS:

[JIS #00 Screwdriver](#) (1)

[iFixit Opening Tool](#) (1)

[Tweezers](#) (1)

[Portable Soldering Iron](#) (1)

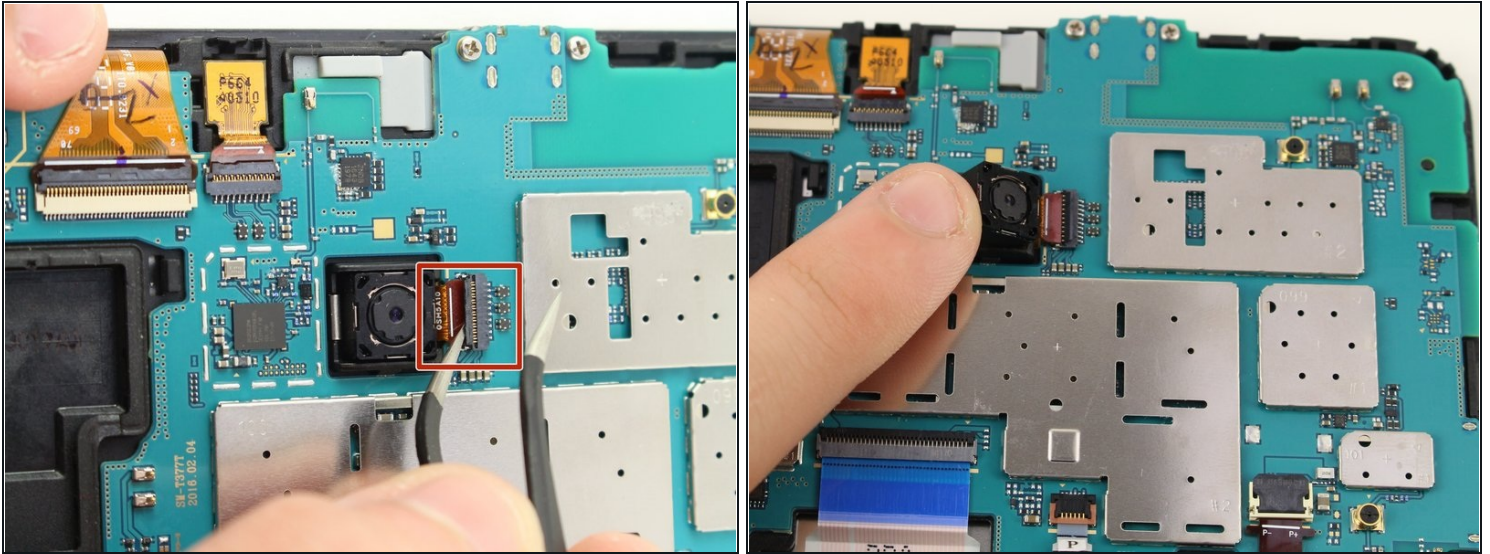
Step 1 — Back Panel



- Use the iFixit Opening Tool to pry off the back case, moving the tool around the screen.

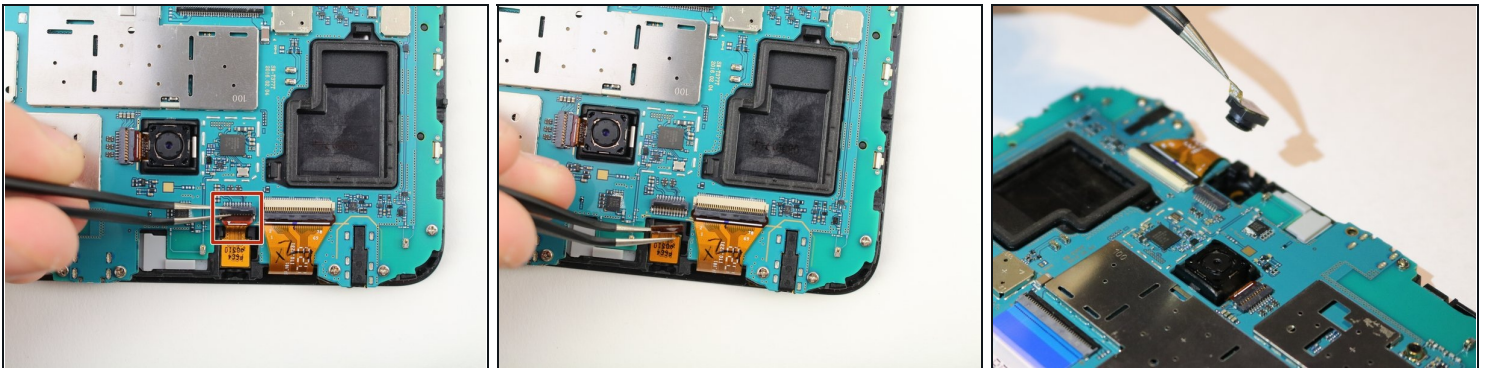
 Make sure the device is off and the SD card is removed before taking off the back casing.

Step 2 — Back Camera



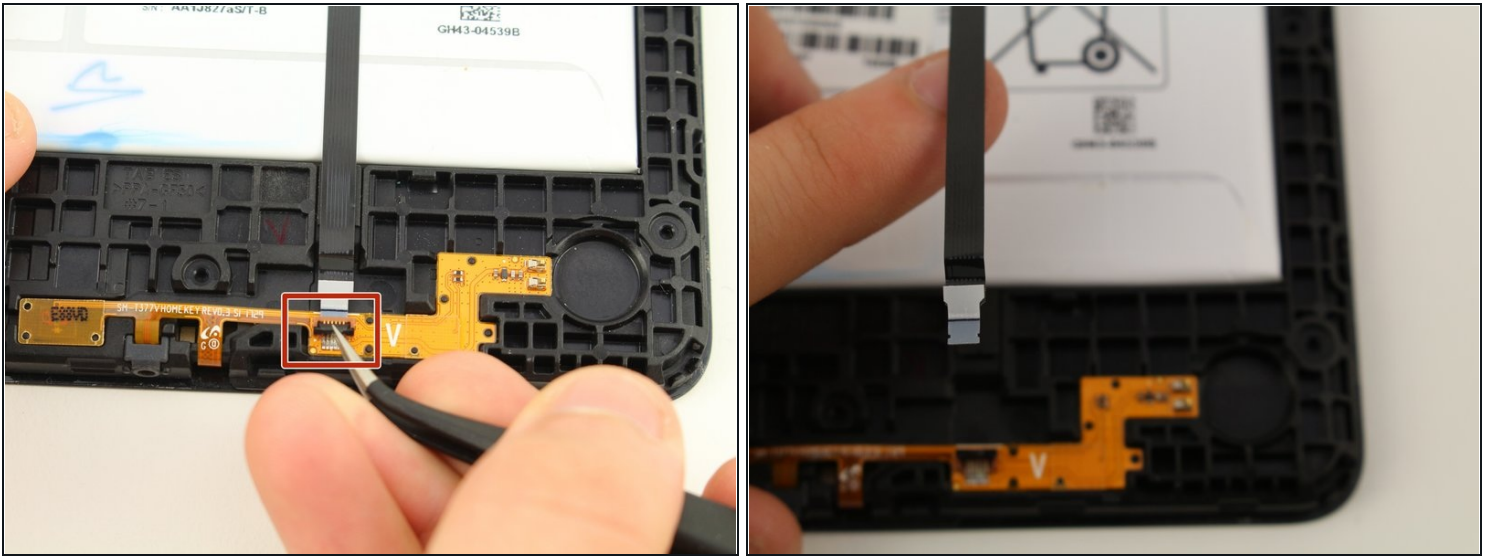
- Use the [tweezers](#) to lift the switch connecting the back camera to the motherboard.
- Use your hand to remove the back camera from the motherboard.

Step 3 — Front Camera



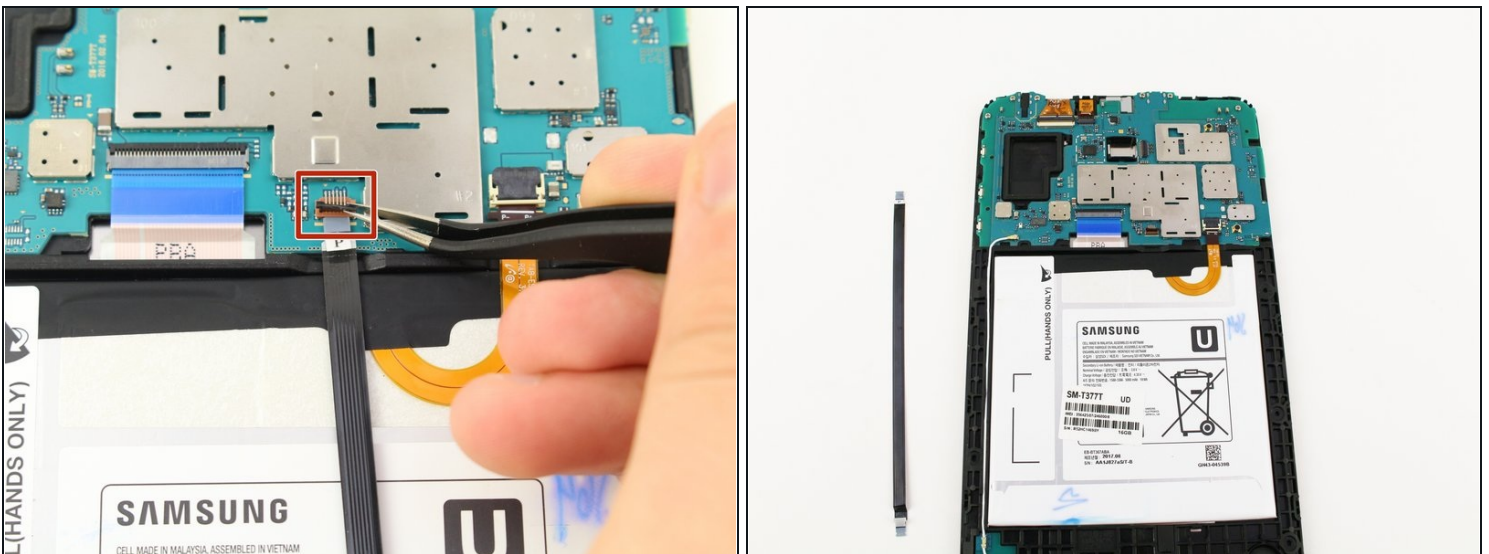
- Use the [tweezers](#) to lift the switch connecting the front camera to the motherboard.
- Remove the front camera from the motherboard by lifting with the tweezers.

Step 4 — Motherboard



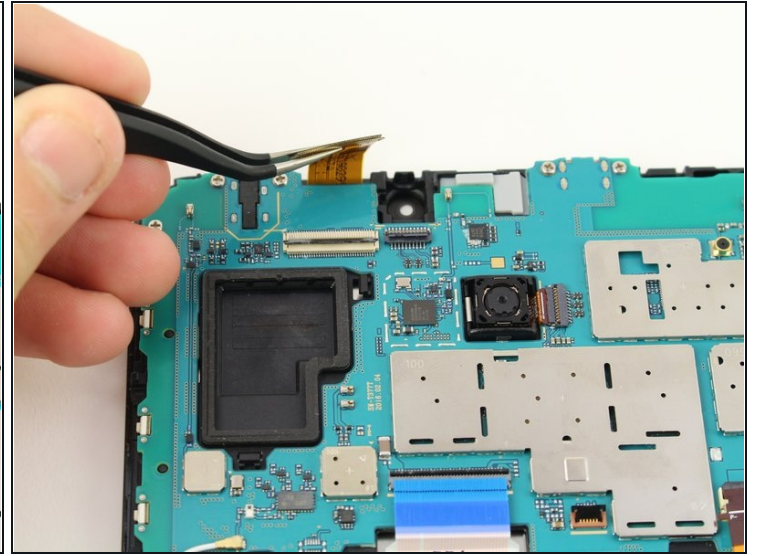
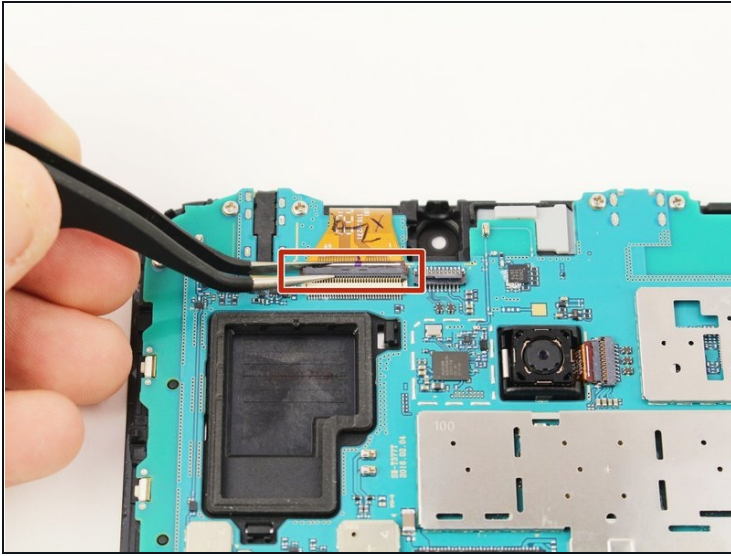
- Use the [tweezers](#) to flip the switch on the bottom of the strap that goes over the battery.
- Release the strap from the switch by lifting the strap with your hand.

Step 5



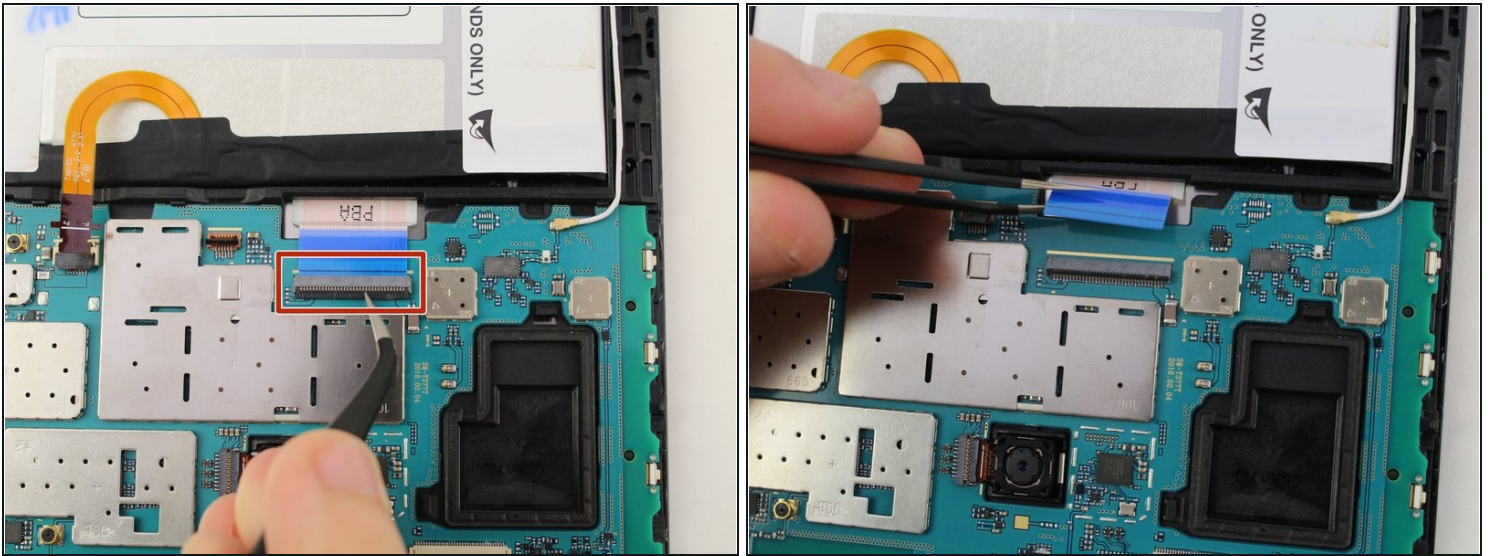
- Use the tweezers to flip the switch that connects the top of the strap to the motherboard.
- Lift the top end of the strap with your hand and remove the strap completely from the device.

Step 6



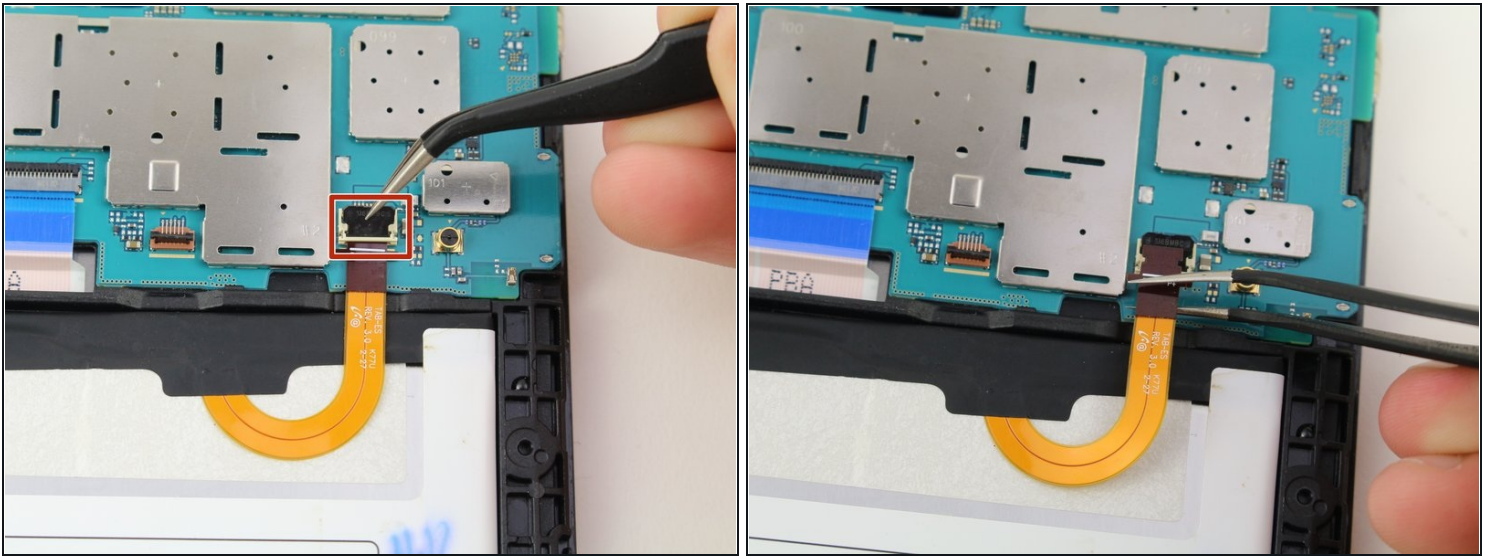
- Use the tweezers to flip the switch of the connector.
 - Lift the connector from the motherboard.
- ⓘ This connector does not come completely off, but disconnects from the motherboard.

Step 7



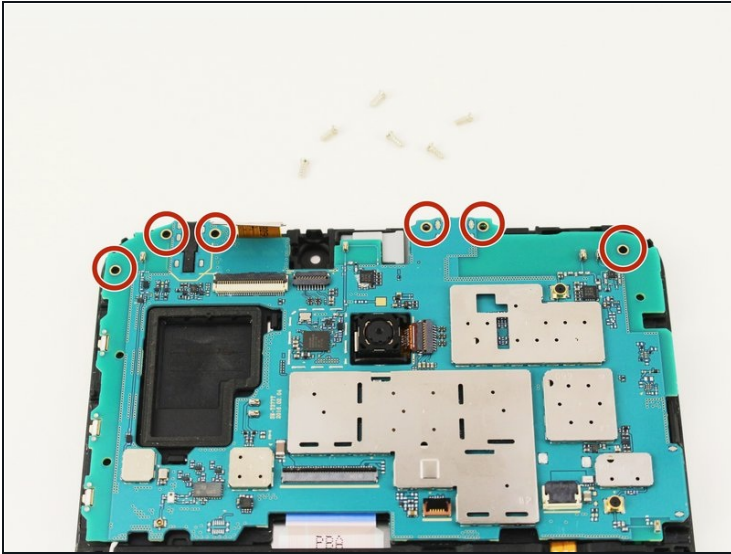
- Use the tweezers to flip the switch of the blue connector on the motherboard.
- Lift the connector from the motherboard.
- ① This switch can detach from the device, but just needs to disconnect from the motherboard.
- ① Ensure the blue ribbon cable is not under the motherboard upon reassembly.

Step 8



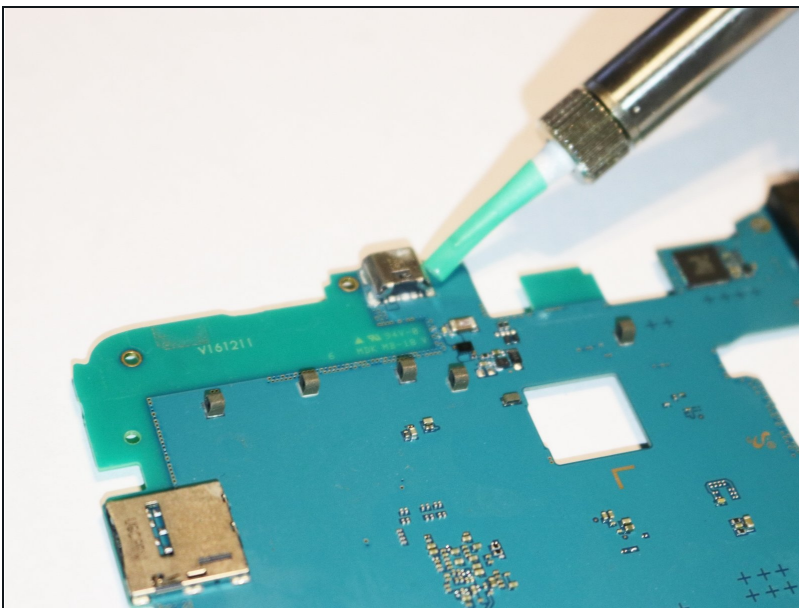
- Use the tweezers to flip the switch of the connector that runs from the battery to the motherboard.
- Lift the connector from the motherboard.
- ① This switch can detach from the device, but just needs to disconnect from the motherboard.

Step 9



- Use a JIS #00 screwdriver to remove the six 4.5mm screws at the top of the motherboard.
- Lift the motherboard with your hand to detach the motherboard from the device.

Step 10 — Charging Port



- Use the soldering tool to remove the charging port.

To reassemble your device, follow these instructions in reverse order.

