



JBL Charge 3 Battery Replacement

This guide will teach you how to replace the JBL Charge 3 battery.

Written By: Jack Ng



INTRODUCTION

Your battery may need to be replaced if it doesn't hold a charge or is not charging at all. The JBL Charge 3 has a 6000mAh battery.



TOOLS:

- [iFixit Opening Tools](#) (2)
- [Phillips #1 Screwdriver](#) (1)



PARTS:

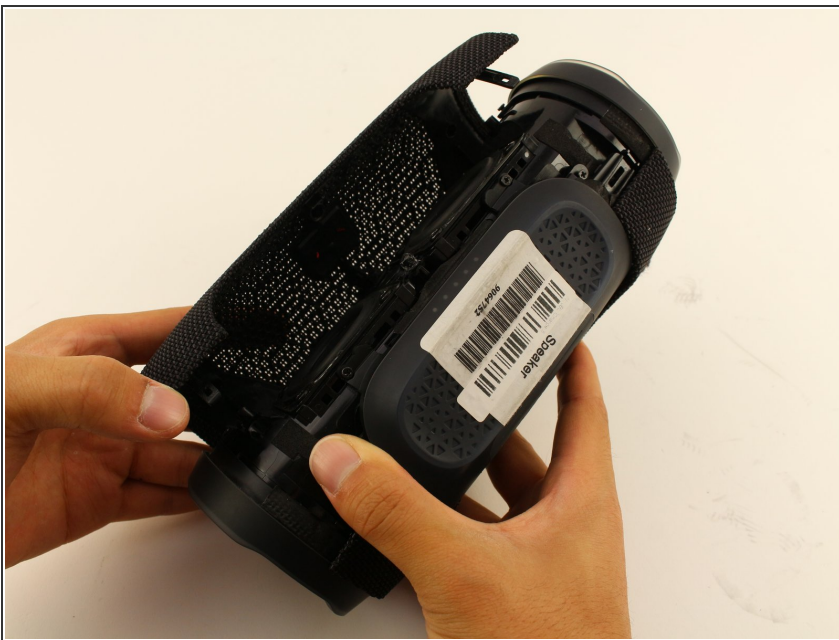
- [JBL Charge 3 Replacement Battery](#) (1)

Step 1 — Front Cover



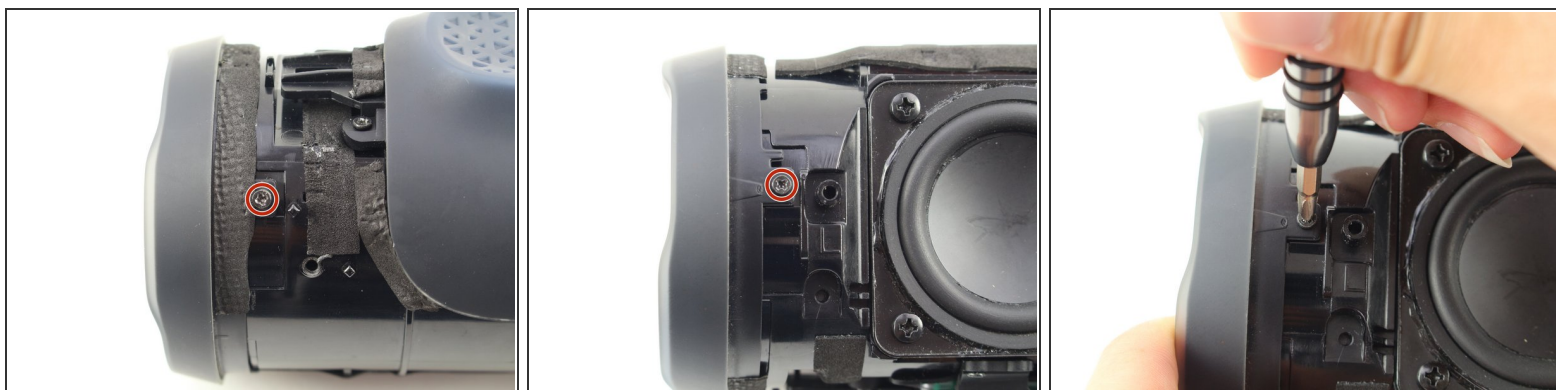
- Turn your speaker upside down and insert the plastic opening tool vertically into the slit in the front cover.
- Slowly pull the plastic opening tool outward to remove the four clips holding the covering in place.
- Repeat this process for all four edges of the front cover.

Step 2



- Pull apart your cover gently from both sides and remove it from the speaker housing.
- ✦ The inside of the front cover has holes that must match with their corresponding pins on the speaker housing for proper reassembly.
- ⚠ Removing the Front Cover does not affect the waterproof seals of the device. However, removing any further disassembly of your speaker will require removing waterproof seals and gaskets. Your device may no longer be waterproof after these have been altered.

Step 3 — Passive Radiators



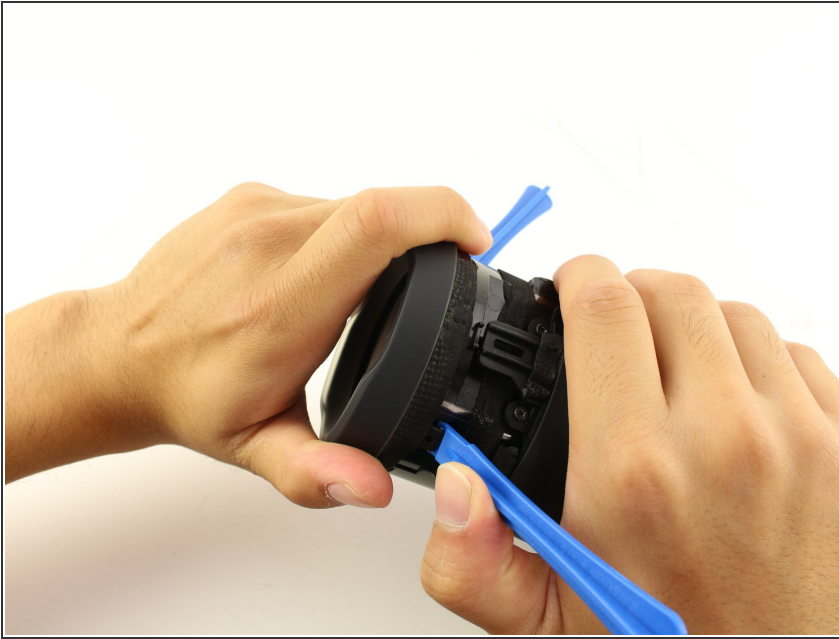
- Remove the two 8mm Phillips #1 screws from the tabs.
- NOTE: There may be only one screw.

Step 4



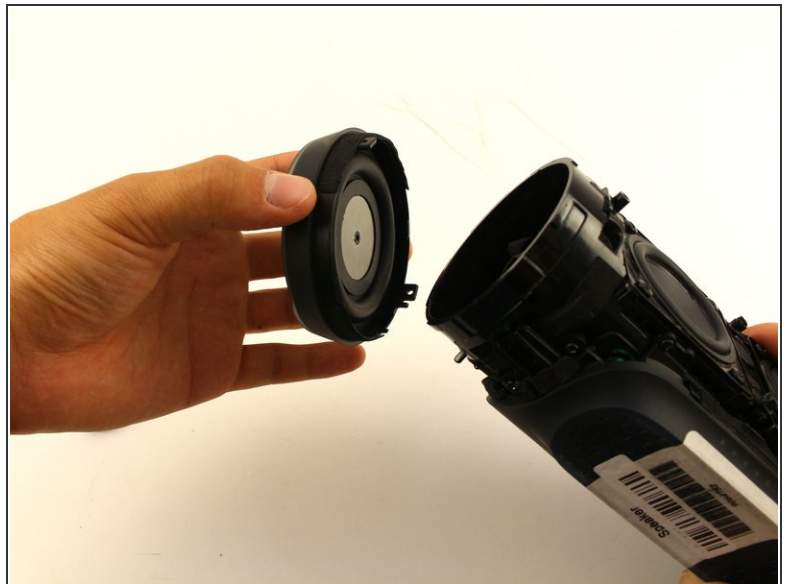
- Insert the plastic opening tools underneath both tabs.

Step 5



- Twist and pull open the passive radiator. The left radiator twists off clockwise; the right counterclockwise.

Step 6



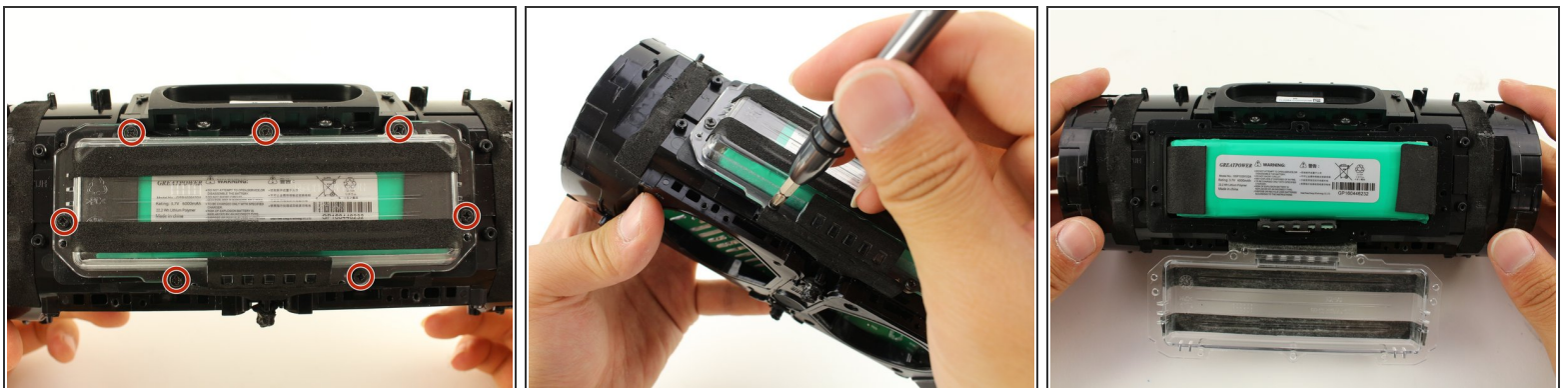
- Repeat all previous steps for the other passive radiator.
- NOTE: only the right radiator needs to be removed for changing the battery.

Step 7 — Battery



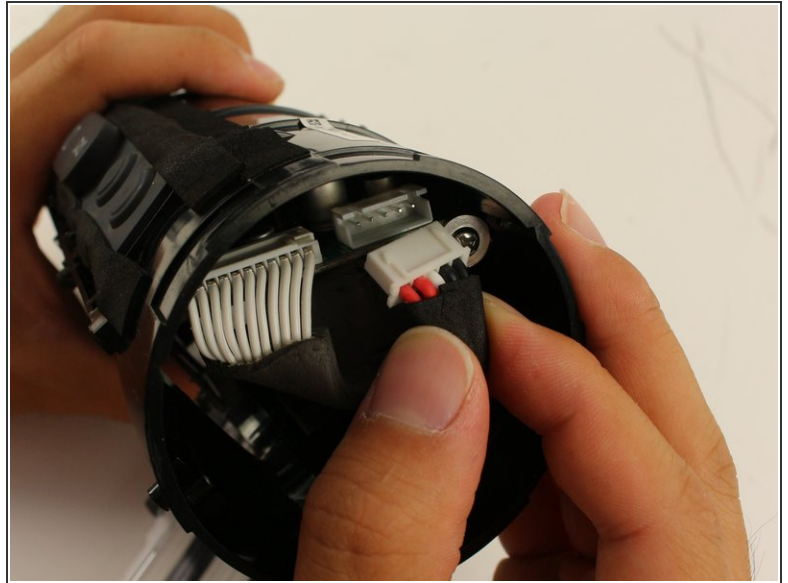
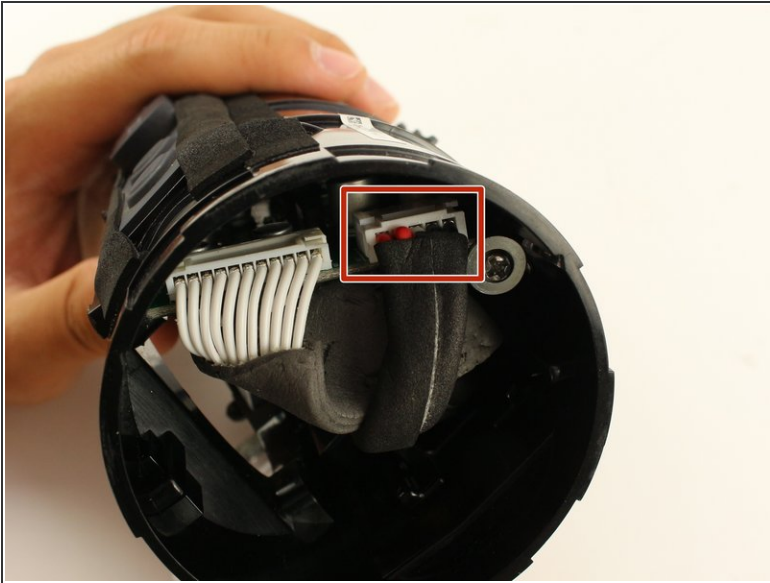
- Remove the six 8mm Phillips #1 screws from the outer battery cover.
- Peel the outer battery cover away from the speaker housing.

Step 8



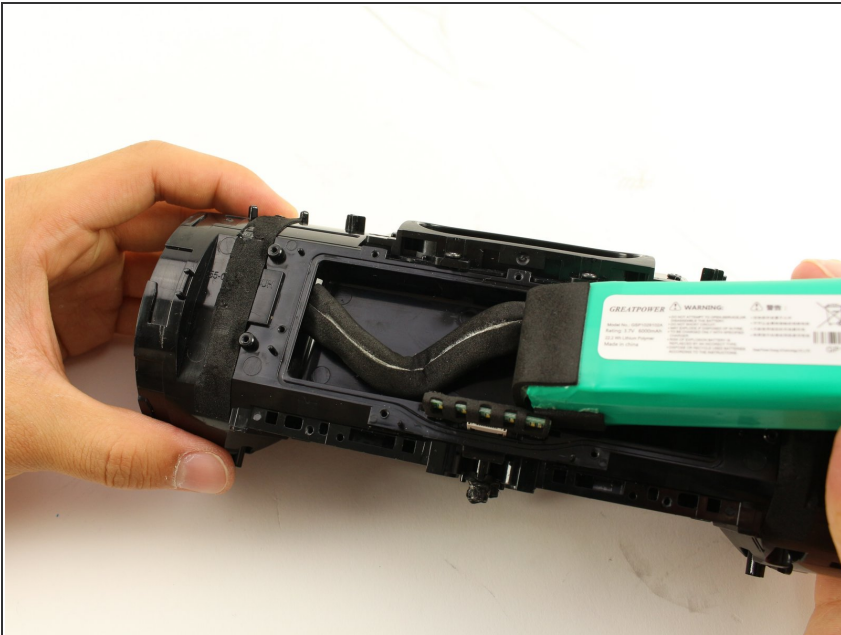
- Remove the seven 8mm Phillips #1 screws from interior battery cover.
- Remove the interior battery cover.

Step 9



- Pull gently to disconnect the bundled cable connector in the side of the speaker. This action will separate the battery from the motherboard.

Step 10



- Pull the battery and battery cable out from their housing.

To reassemble your device, follow these instructions in reverse order.

This document was generated on 2021-02-01 11:33:08 AM (MST).

