



Lenovo Legion Y520-15IKBN Battery Replacement

If your laptop will not start up or stay...

Written By: Naomi Williams



INTRODUCTION

If your laptop will not start up or stay charged you may need to replace the battery. It is not a difficult project and the hardest part will be prying the back piece off.

For your safety, discharge your battery below 25% before disassembling your device. This reduces the risk of a dangerous thermal event if the battery is accidentally damaged during the repair. If your battery is swollen, [take appropriate precautions](#).

Shut down and unplug your device before beginning.

TOOLS:

Spudger (1)
Phillips #00 Screwdriver (1)

PARTS:

Lenovo Legion Y520 & IdeaPad 700
Battery (1)

Step 1 — Base Panel



 **Shut down and unplug your device before proceeding.**

- Remove the thirteen 6.5 mm screws from the base plate using a Phillips #00 screwdriver.

Step 2



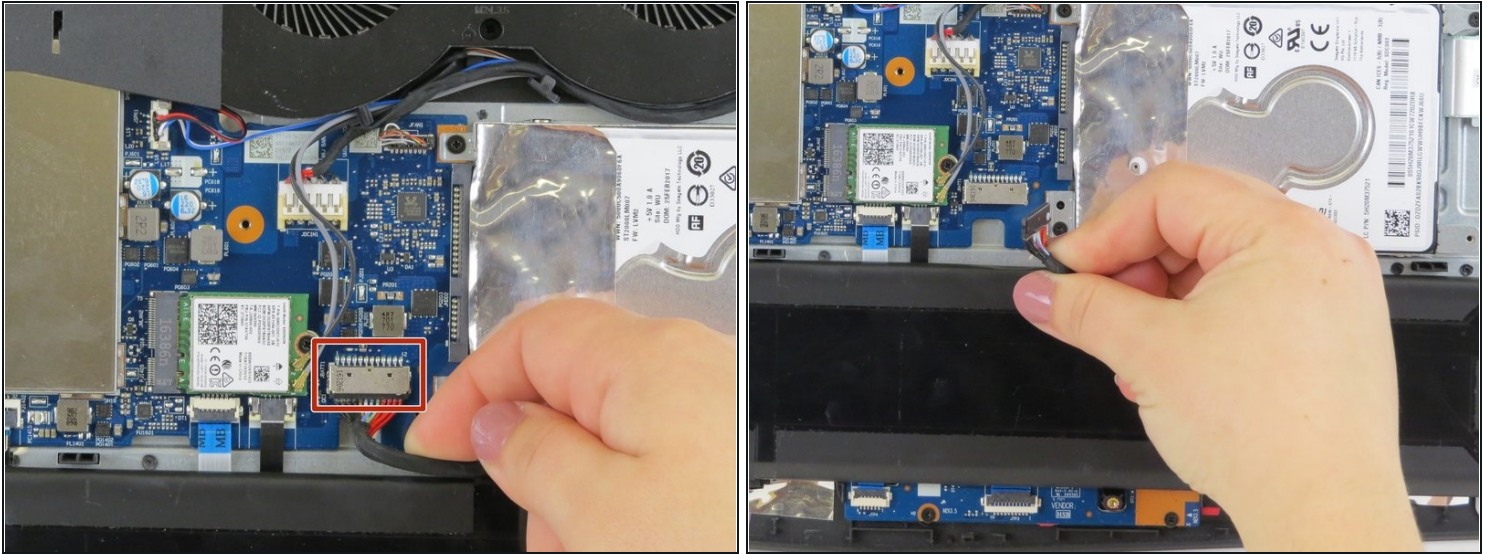
- Flip the laptop on its side and wedge a spudger between the base panel and chassis, then pry around the perimeter until the base panel releases.
 - ① To get a better grip you may want to open the laptop slightly.
- Lift the bottom panel off of the chassis.
 - ★ During reassembly, make sure that the bottom panel clicks back into place on all four sides of the laptop.

Step 3 — Battery



- Remove the four 4 mm Phillips #00 screws securing the battery.

Step 4



- Disconnect the battery connector by pulling the battery cable directly out of its port, toward the battery.
⚠ Do not pull on the socket itself or you risk damaging the motherboard.
- ① If necessary, apply force and slowly wiggle the connector out of its socket. It should work its way out slowly.

Step 5



- Lift the battery up and out of the chassis.

To reassemble your device, follow these instructions in reverse order.

Take your e-waste to an [R2 or e-Stewards certified recycler](#).

Repair didn't go as planned? Try some [basic troubleshooting](#), or ask our [Answers community](#) for help.