



MSI GE70 2PE Apache Pro Touchpad Replacement

This is a guide that can be used to replace the...

Written By: Joseph Welch



INTRODUCTION

This is a guide that can be used to replace the touchpad in your MSI GE70 2PE Apache Pro.

TOOLS:

[iFixit Opening Tool](#) (1)

[Phillips #1 Screwdriver](#) (1)

Step 1 — Battery



- Turn over the laptop so the battery compartment is facing up.

Step 2



- Push the right latch all the way to the right until it clicks into place.

Step 3



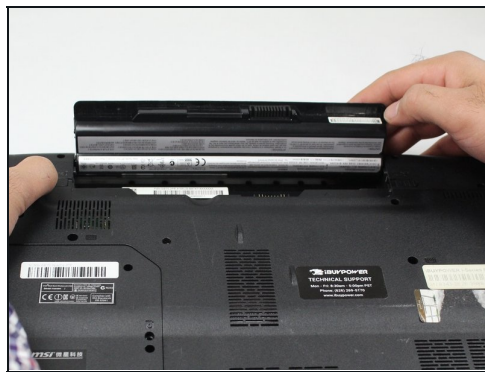
- Pull and hold the left latch.

Step 4



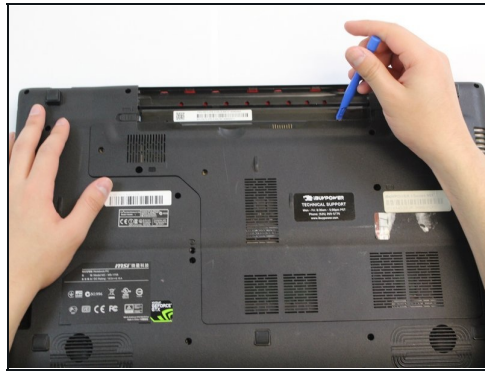
- Pry the battery upward using the indent.

Step 5



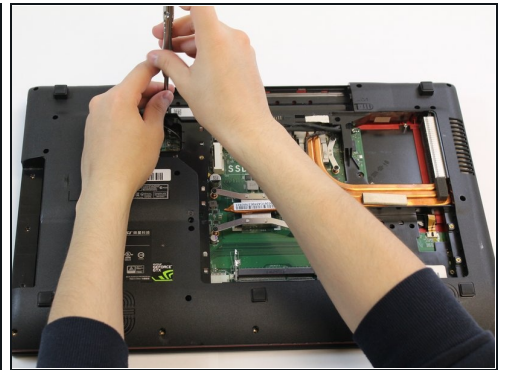
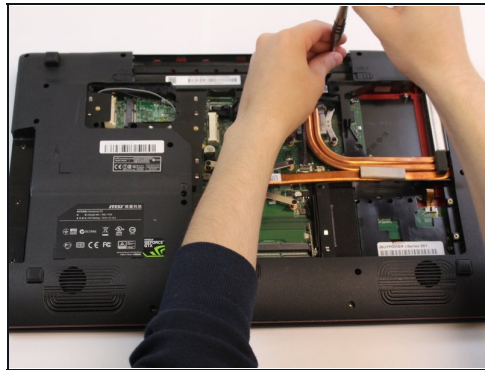
- Continue to pull the battery until it is free of the casing.

Step 6 — Touchpad



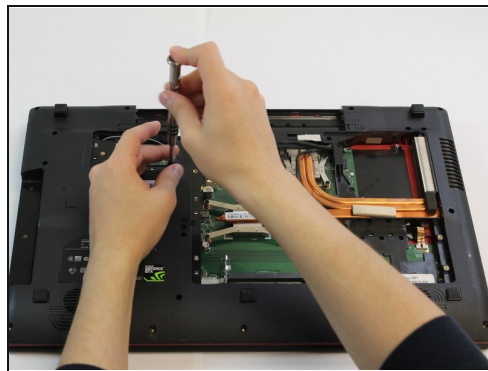
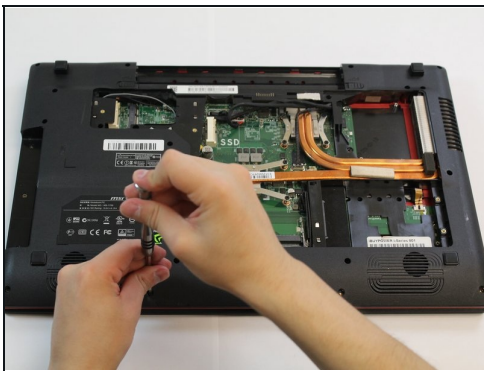
- Remove the six 5.5mm screws by using a Phillips #1 screwdriver.
- Pry the door off using a plastic opening tool.

Step 7



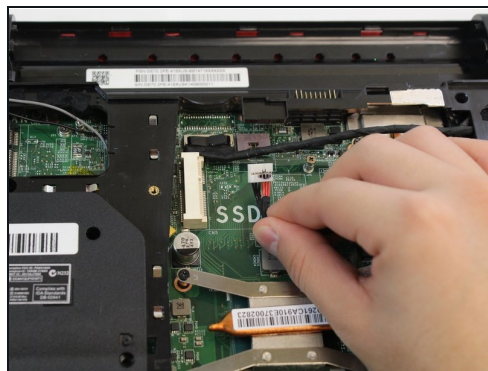
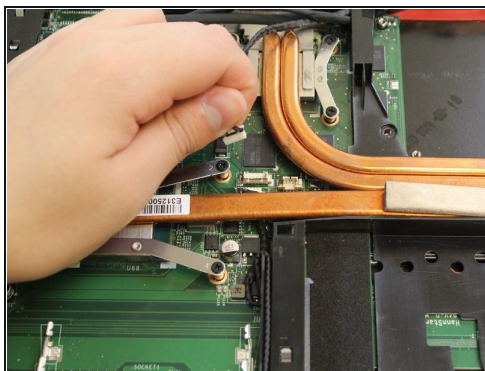
- Remove the five 3.5mm screws by using a Phillips #1 screwdriver.

Step 8



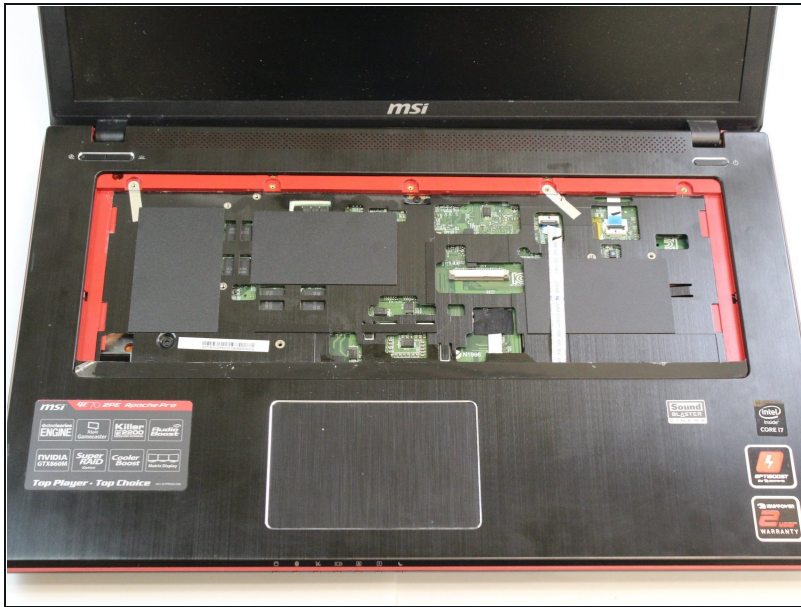
- Remove the twenty-one 5.5mm screws by using a Phillips #1 screwdriver.

Step 9



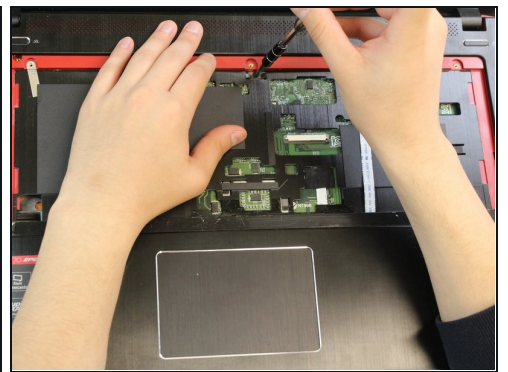
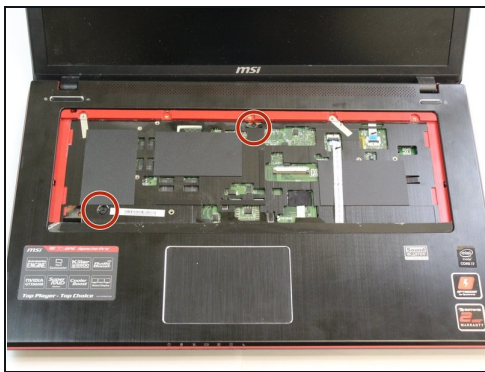
- Disconnect the power, mic, and LVDS cables.

Step 10



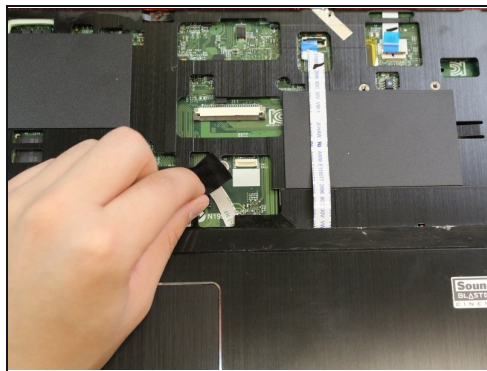
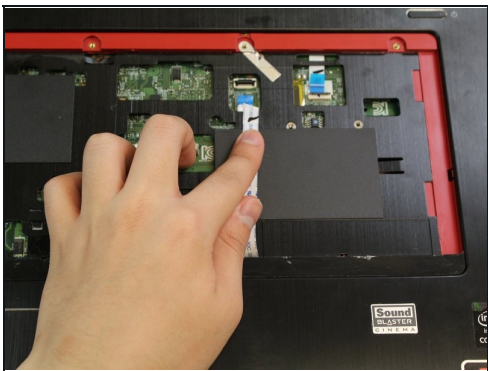
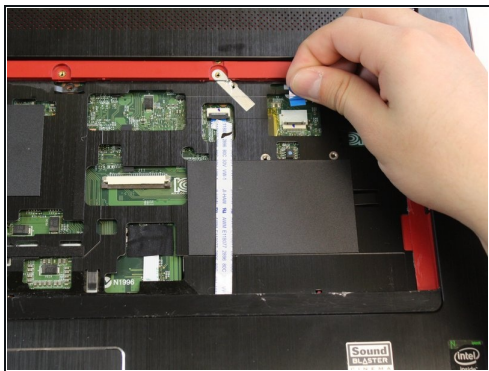
- Turn over the laptop so the screen is open and keyboard is exposed.

Step 11



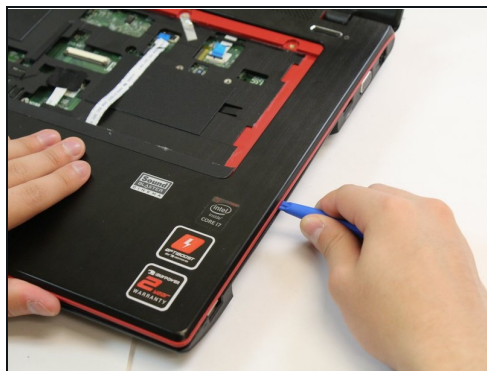
- Remove the two 5.5mm screws by using a Phillips #1 screwdriver.

Step 12



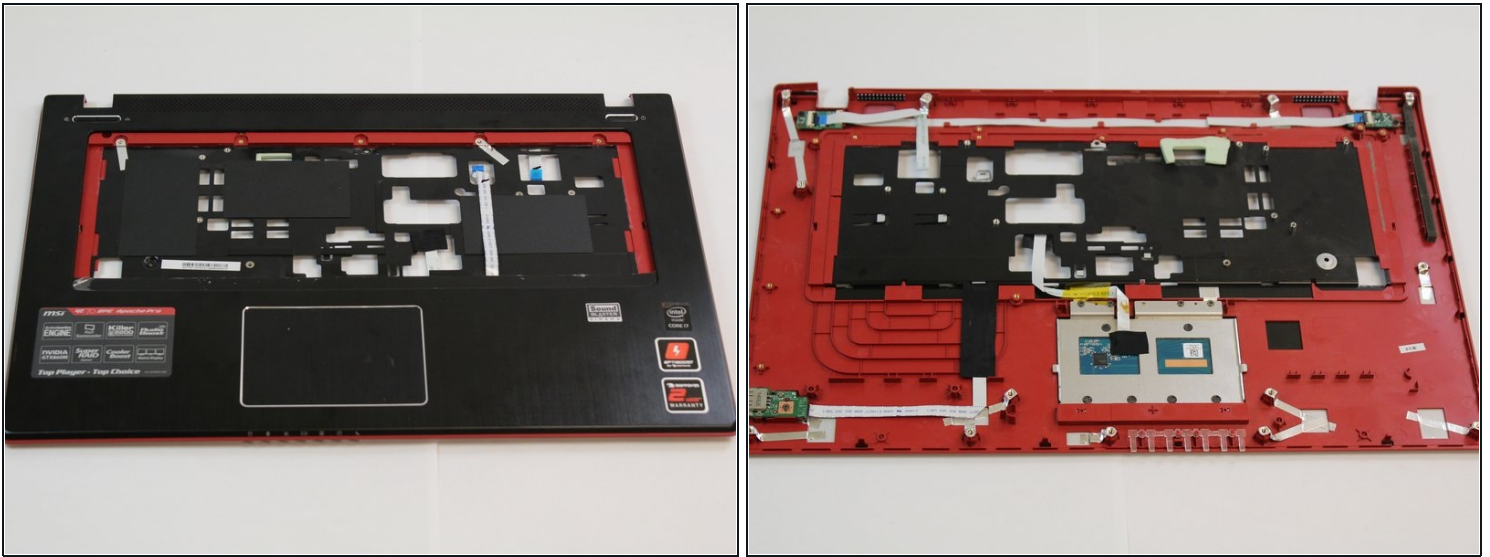
- Disconnect the touchpad, touchpad button, and power board connections.

Step 13



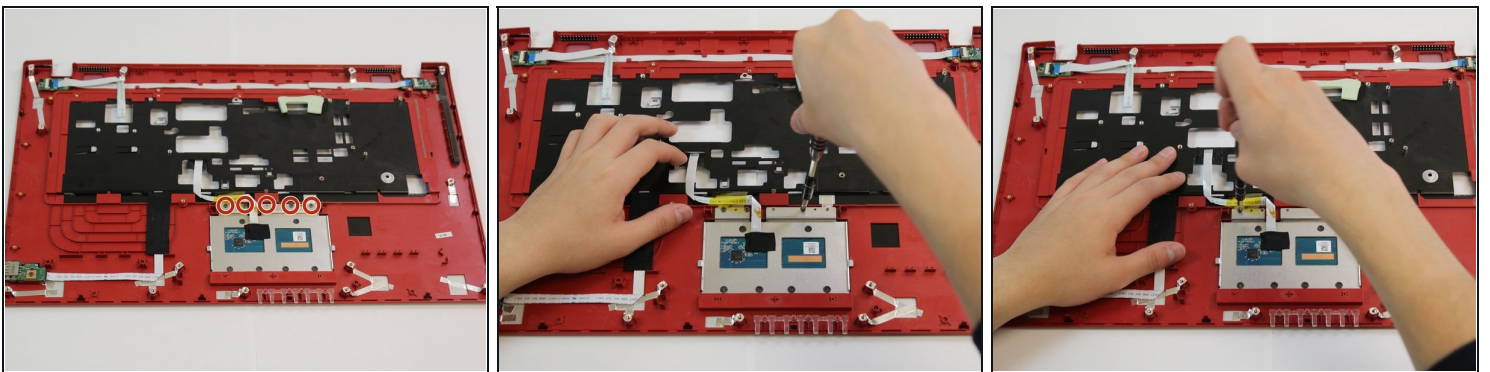
- Using the plastic opening tool, pry open the computer case.

Step 14



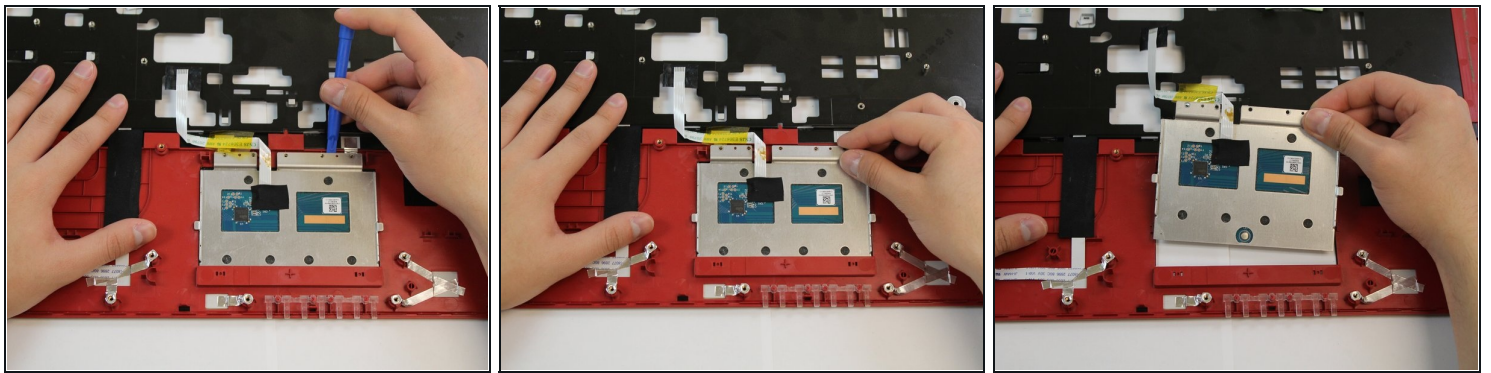
- Turn the panel over so that the internals are facing upward.

Step 15



- Remove the five 2.5mm screws by using a Phillips #1 screwdriver.

Step 16



- Using the plastic opening tool, pry the touchpad off and remove it.

To reassemble your device, follow these instructions in reverse order.