



Asus ROG G750JM-BSI7N23 Motherboard Replacement

Replacing/repairing the motherboard on your Asus ROG G750JM-BSI7N23.

Written By: Tanner



INTRODUCTION

Use this guide if your computer is not responding even after you have replaced the battery and power components.



TOOLS:

- [Phillips #2 Screwdriver](#) (1)
 - [iFixit Opening Tools](#) (1)
-

Step 1 — Soundbar/speaker



- Using a plastic opening tool, remove the two rubber tabs circled in red.

Step 2



- Remove both of the 8mm Phillips #2 screws from these slots where the rubber caps were removed.

Step 3



- Slide the tab to pop the battery out of its holder.
- Pull the battery out of its slot.

Step 4



- Remove the three 4mm Phillips #2 screws from the open battery slot as shown.
- Remove the two 5mm Phillips #2 screws.

Step 5



- Begin prying up on the plate as shown in the pictures.

Step 6



- Detach the single connector using your plastic opening tool.
- Remove the speaker bar.

Step 7 — Back Plate



- With the computer upside down, lift up on the rubber cap on the back plate to access the captive Phillips #2 screw.

Step 8



- Retract the Phillips #2 screw until the cover is loose.
- ⓘ The screw will not come all the way out.

Step 9



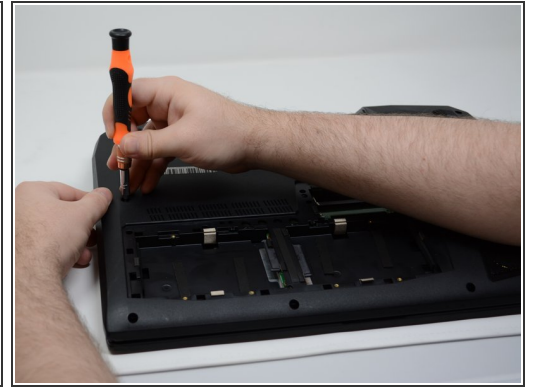
- Pry around the edges of the plate using a plastic opening tool until the plate is removed.

Step 10 — Keyboard



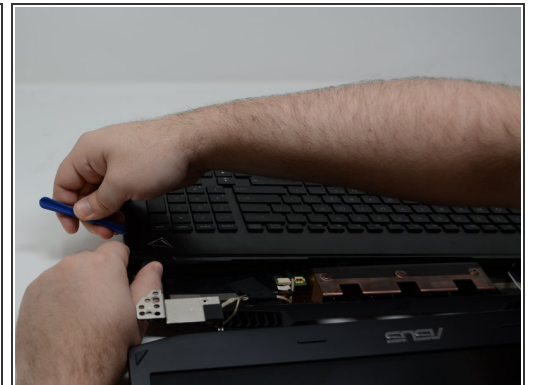
- Remove the six 8mm Phillips #2 screws to remove the display.
- Remove the two 4mm Phillips #2 screws.

Step 11



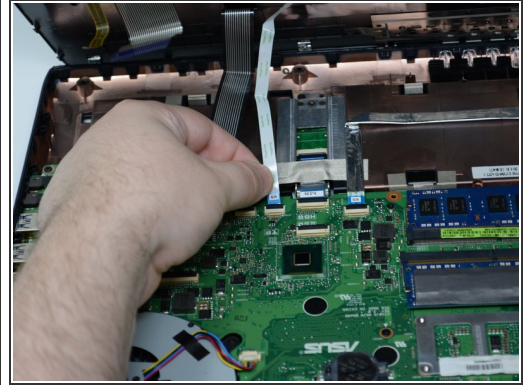
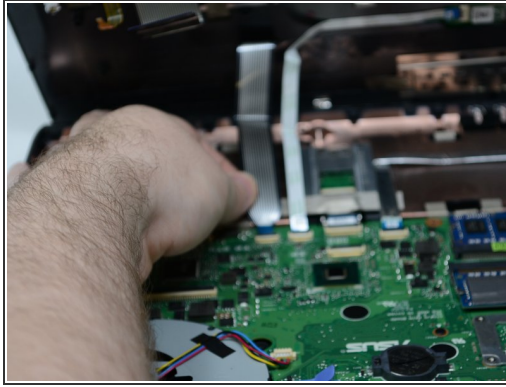
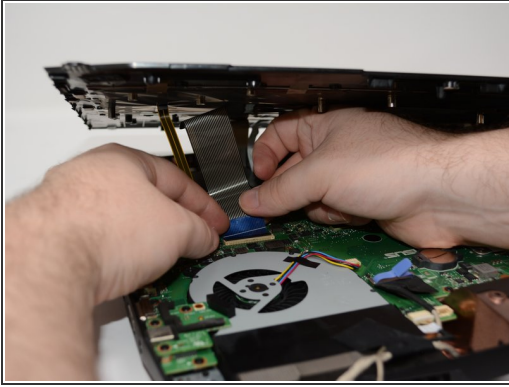
- Remove the four rubber tabs circled in green on the bottom of the device.
- Remove the five 4mm #2 Phillips screws.
- Remove the two 8mm #2 Phillips screws.
- Remove the two 1cm #2 Phillips screws.

Step 12



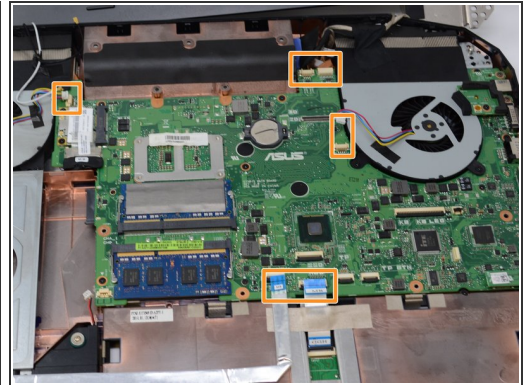
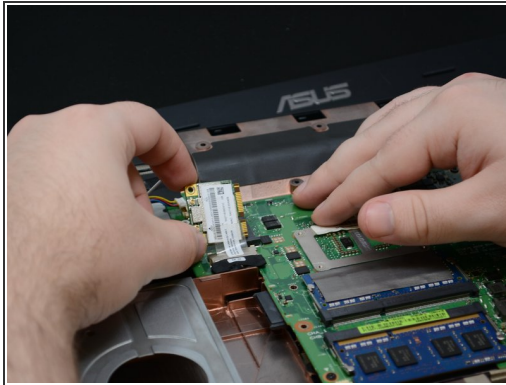
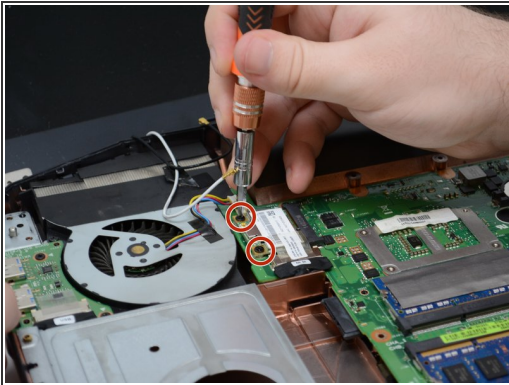
- Pry around the keyboard on the top topside as shown to remove it from shell.

Step 13



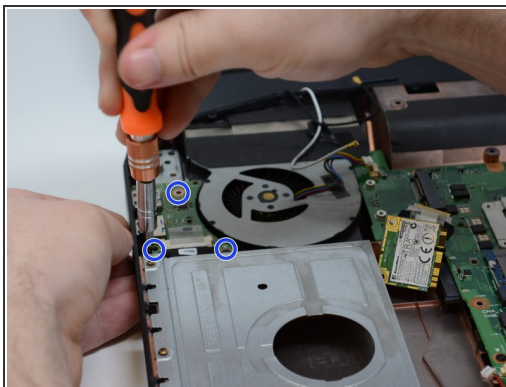
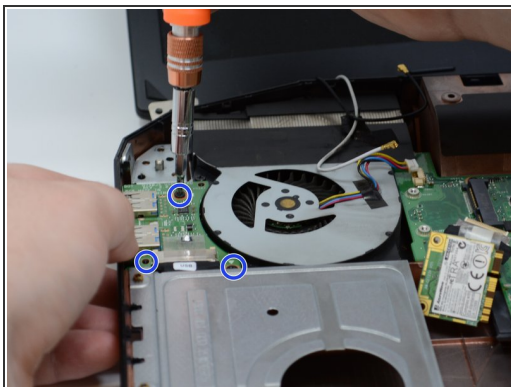
- Remove the four connectors using your pry tool.
- The keyboard will now be separated from the main computer.

Step 14 — Motherboard



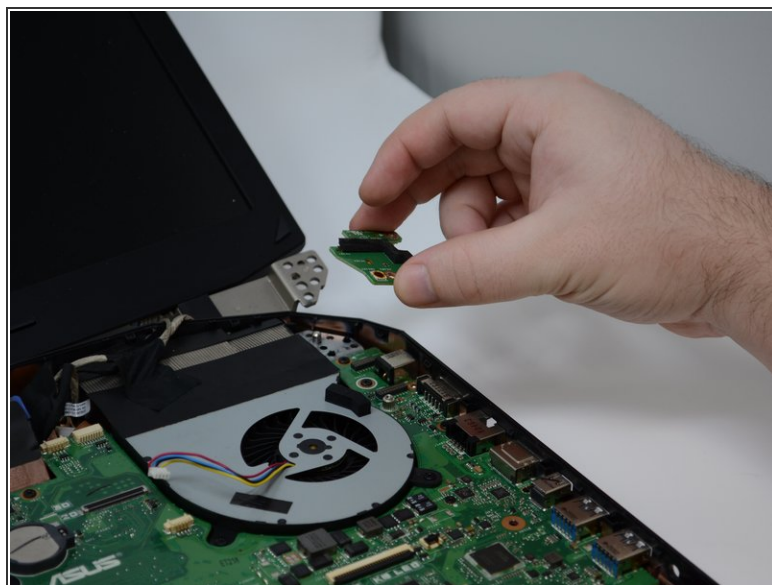
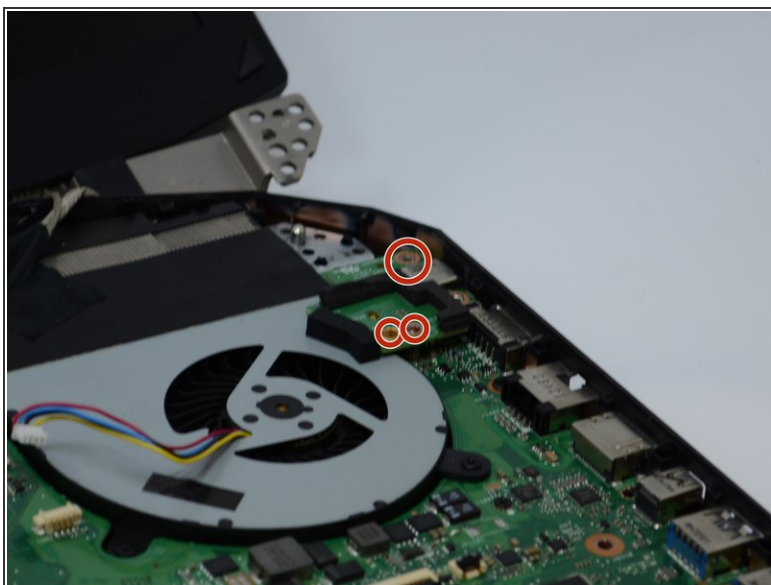
- First, remove the two 7mm #2 Phillips screws circled in red to fold the silver plate over.
- Remove all the connectors shown in the orange squares. You may need to use your plastic opening tool for the smaller ones.

Step 15



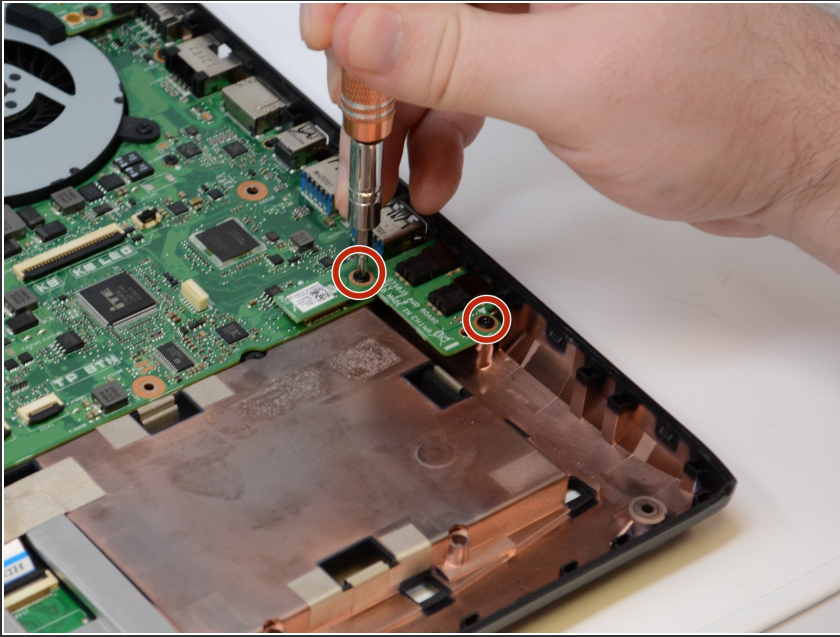
- Remove the three #2 Phillips screws from the small wireless card located in the top left.

Step 16



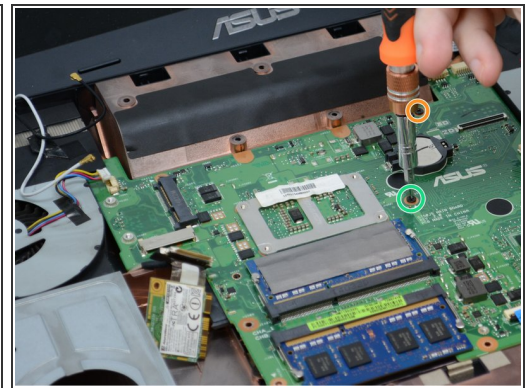
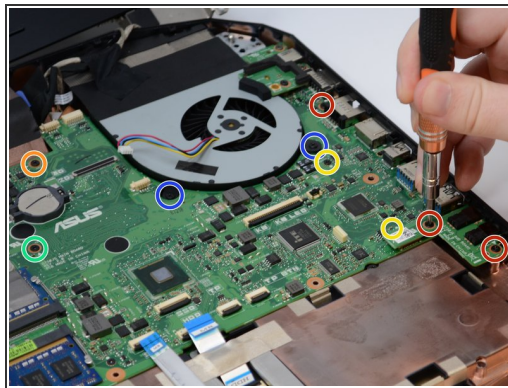
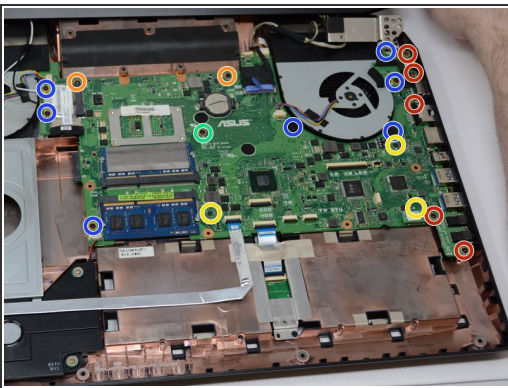
- Remove the three #2 Phillips screws from the small power button card in the top right.

Step 17



- Remove the two #2 Phillips screws for the audio card located in the bottom right.

Step 18



- Remove all 8mm #2 Phillips screws .
- Remove all 2mm #2 Phillips screws.
- Remove all 3mm #2 Phillips screws.
- Remove all 7mm #2 Phillips screws.
- Remove all 4mm #2 Phillips screws.

Step 19



- When all the screws are removed, pry up on the edges of the circuit board. You may need your plastic opening tool to access the edges.

To reassemble your device, follow these instructions in reverse order.