



iMac G5 20" Model A1145 Hard Drive Replacement

Upgrade your hard drive for more storage space.

Written By: Andrew Bookholt



INTRODUCTION

Upgrade your hard drive for more storage space.

TOOLS:

Phillips #1 Screwdriver (1)
Plastic Cards (1)
TR10 Torx Security Screwdriver (1)
T6 Torx Screwdriver (1)
TR8 Torx Security Screwdriver (1)


PARTS:

2 TB SATA Desktop Hard Drive (1)
1 TB 7200 RPM 3.5" Hard Drive (1)
3 TB SATA Desktop Hard Drive (1)
Universal Drive Adapter (1)
4 TB 3.5" Hard Drive (1)
2 TB SSD Hybrid 3.5" Hard Drive (1)
1 TB SSD Hybrid 3.5" Hard Drive (1)
4 TB SSD Hybrid 3.5" Hard Drive (1)

Step 1 — Access Door



- Orient the iMac face-side down on a table with the bottom edge facing yourself.
- Remove the two Phillips screws securing the access door to the bottom grille of your iMac.
- ⓘ The screws are captive in the access door.

 **Before beginning the repair, unplug the computer and press and hold the power switch for 20-30 seconds, to discharge internal capacitors.**

Step 2



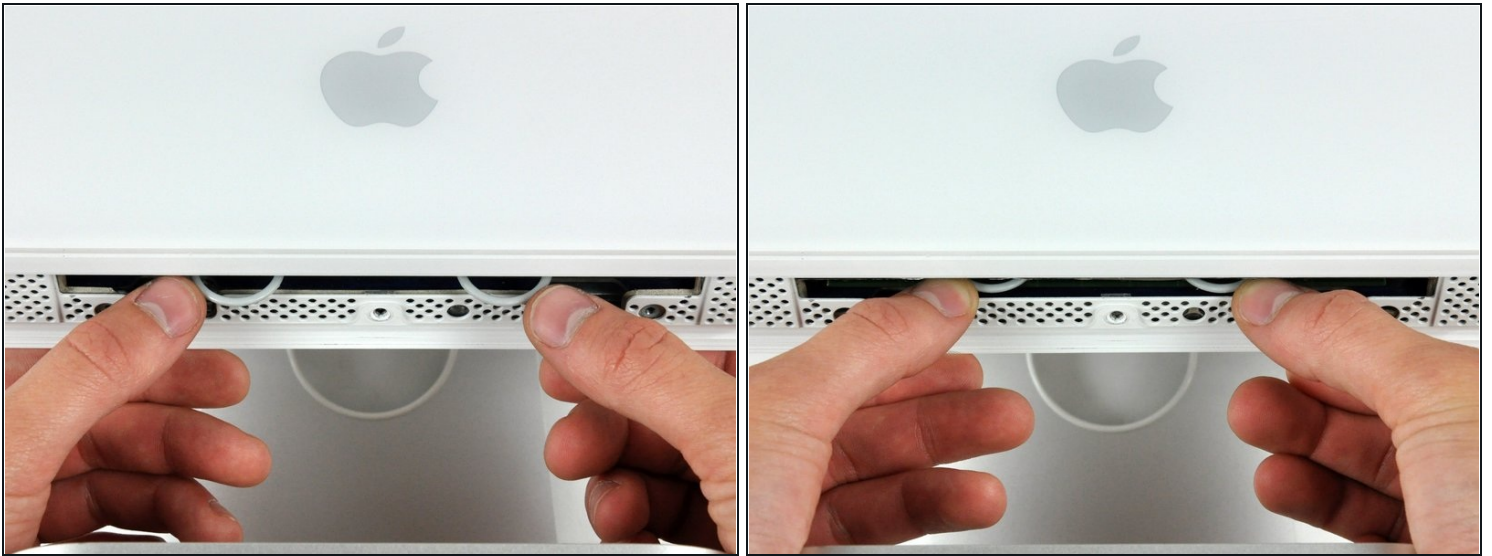
- Remove the access door.

Step 3 — Front Bezel



- Remove the three T8 Torx screws securing the front bezel to the rear case along the lower edge of the iMac.

Step 4



- Turn the computer over.
- Use your thumbs to press both RAM arms in past the front bezel for enough clearance to lift it off the rear case.

Step 5



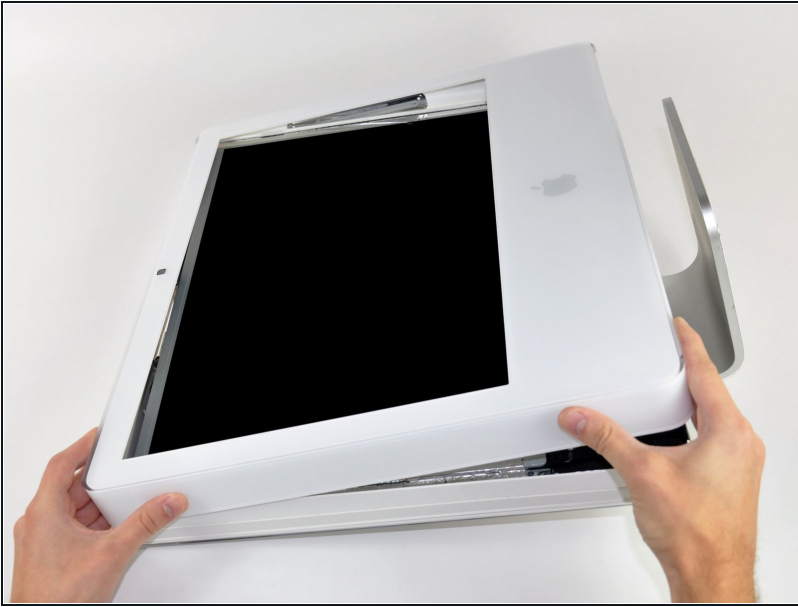
- While holding the RAM arms in with your thumbs, lift the lower edge of the front bezel enough to clear the rear case.

Step 6



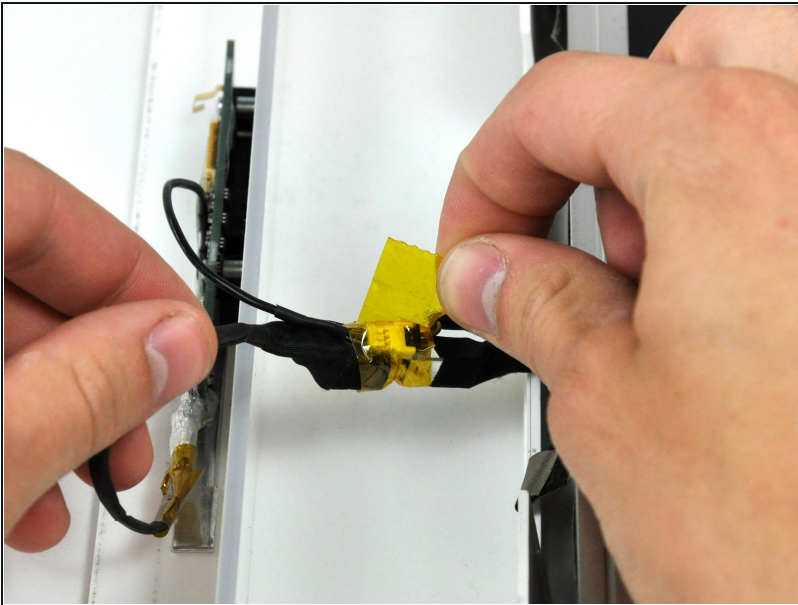
- ① Re-orient your iMac so it sits upright on the stand.
- Insert a [plastic card](#) up into the corner of the air vent slot near the top of the rear case.
- Push the card toward the top of the iMac to release the front bezel latch.
- Pull the front bezel away from the rear case.
- Repeat this process for the other side of the front bezel.
- ① It may be necessary to apply several layers of duct tape to the top of the access card to aid in releasing the latches.
- If the bezel refuses to release, try pressing the lower edge back onto the rear case and repeat this opening process.
- ① Alternatively, you can use a strong magnet by holding it to the front top left/right corner of the display. You will hear a snapping sound when the hatch is released.

Step 7



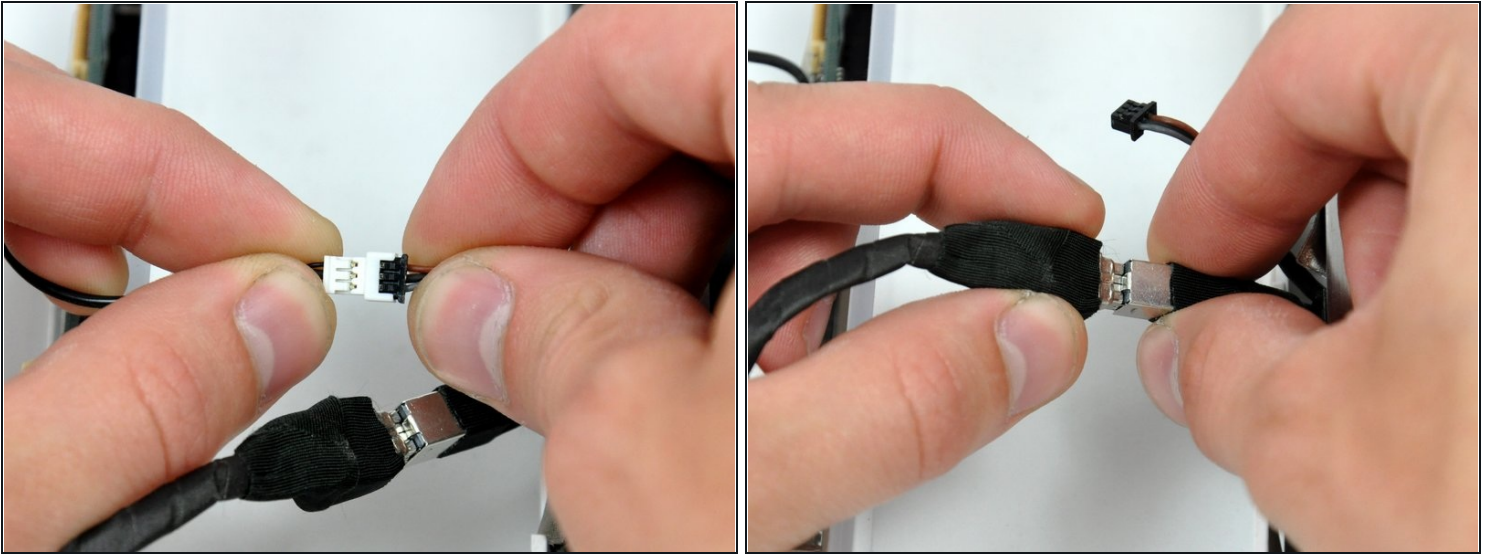
- Lay your iMac stand-side down on a table.
- Lift the front bezel from its lower edge and rotate it away from the rest of your iMac, minding the RAM arms that may get caught.
- Lay the front bezel above the rest of the iMac.

Step 8



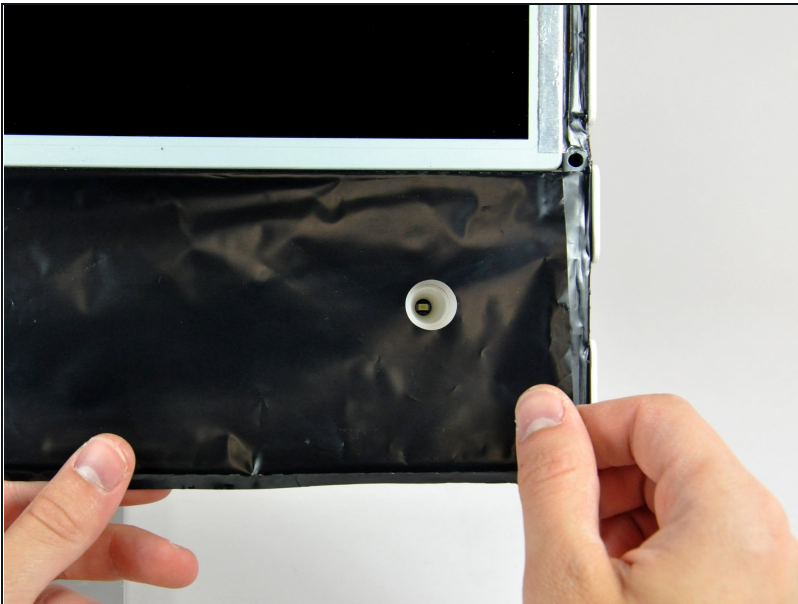
- If necessary, remove the piece of kapton tape wrapped around the microphone and camera connectors.

Step 9



- Disconnect both the camera and microphone cables.

Step 10 — Lower EMI Shield



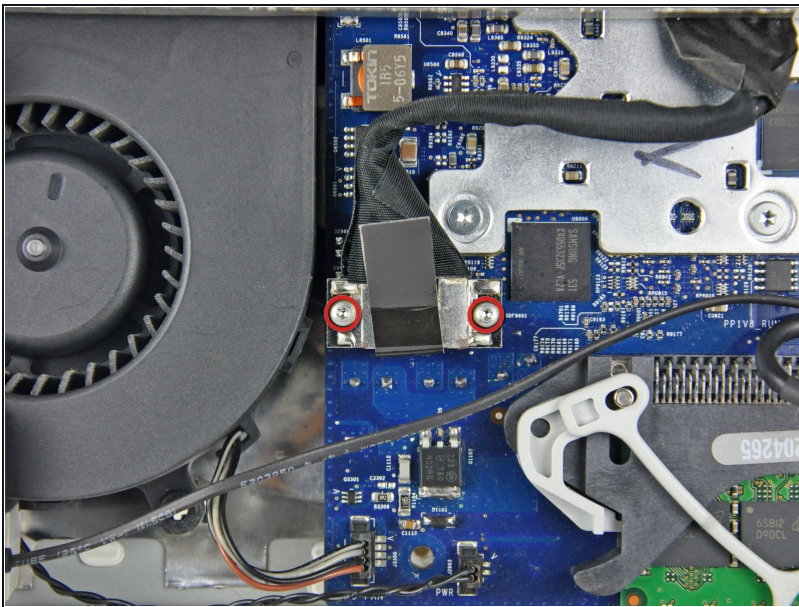
- Peel the lower EMI shield off the lower edge of the iMac and off the two vertical 4" sections on either side of the iMac.
- ⓘ It is not necessary to peel the lower EMI shield off the display.

Step 11



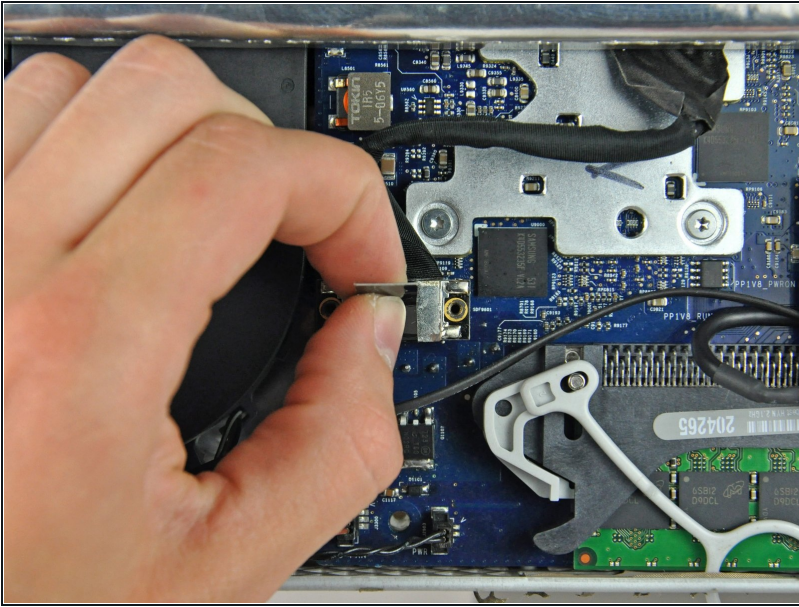
- Tape the lower EMI shield up against the face of the display to keep it out of the way while you work.

Step 12 — Display



- Remove the two T6 Torx screws securing the display data cable connector to the logic board.

Step 13



- To disconnect the display data cable, grab its connector's black tab and pull it away from the face of the logic board.

Step 14



- Peel back the two EMI tape strips from the left and right edges of the display.
- ☑ During reassembly, it is helpful to use several small strips of tape to hold the EMI shielding along the left and right edges of the display footprint out of the way before lowering the display into the rear case of your iMac.

Step 15



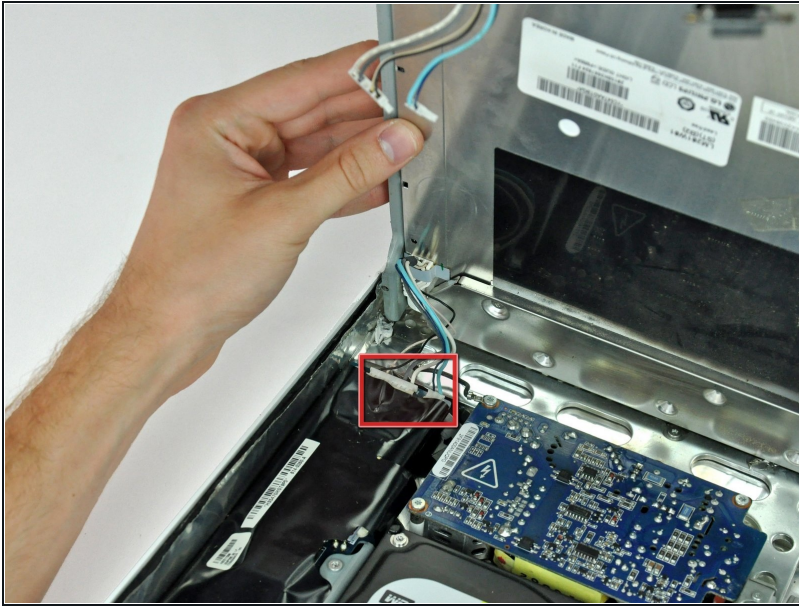
- Remove the four recessed T10 Torx screws securing the display to the rear case.
- ⓘ Bit drivers tend to be too short to reach these screws. Be sure to have a magnetic thin-shafted T10 Torx screwdriver on hand.

Step 16



- Lift the lower edge of the display slightly out of the rear case.
- Disconnect both inverter cables (shown in red) by pulling their connectors toward the bottom edge of your iMac.

Step 17



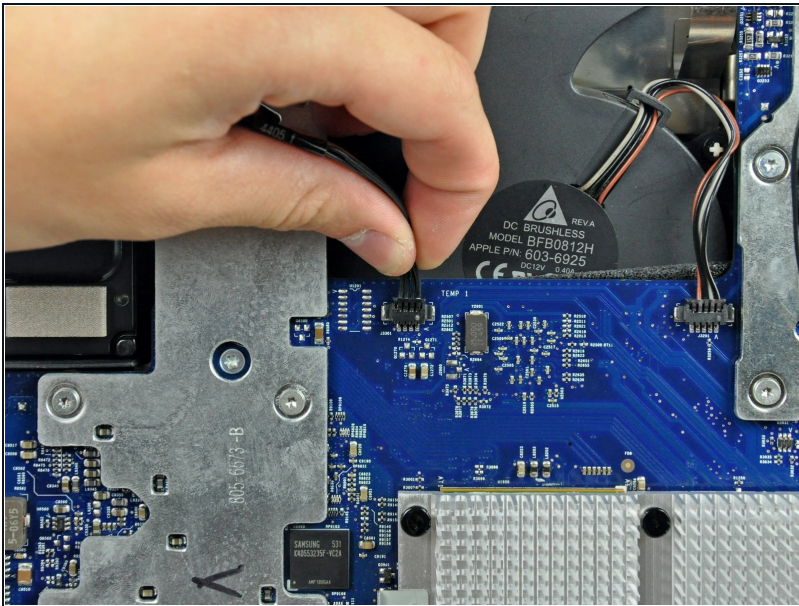
- Lift the display until it is nearly perpendicular to the rear case.
- Disconnect the remaining two inverter cables (shown in red) by pulling their connectors toward the top edge of your iMac.

Step 18



- While holding the display perpendicular to the rear case, pull it upward to peel off the EMI shield stuck to its upper edge.

Step 19 — Hard Drive



- Disconnect the hard drive thermal sensor from the logic board by pulling its connector toward the top edge of your iMac.

Step 20



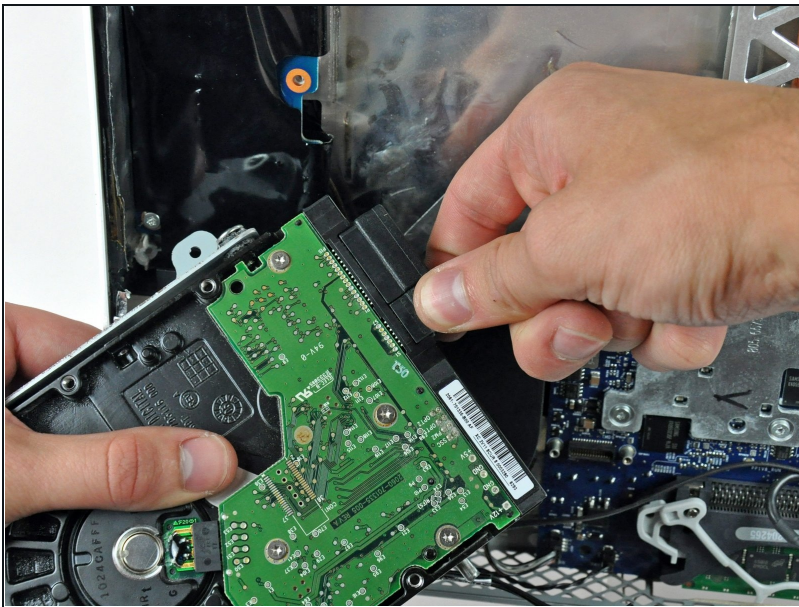
- Remove the two T10 Torx screws securing the hard drive bracket to the inverter.

Step 21



- Lift the left edge of the hard drive slightly, then pull it toward the left edge of the iMac.
- ☒ When reinstalling your hard drive, make sure not to push the rubber grommets through the chassis with the hard drive mounting pins as retrieving them may require removing the logic board.

Step 22



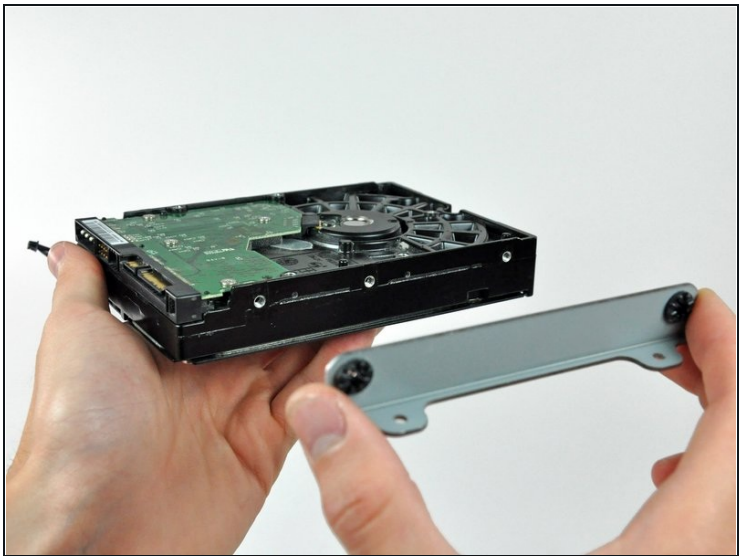
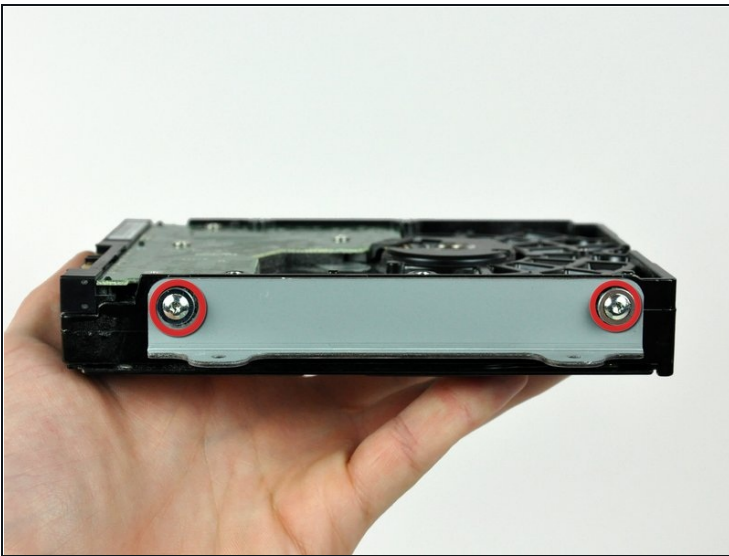
- Rotate the hard drive out of the rear case.
- Disconnect the SATA data cable by pulling its connector away from the hard drive.

Step 23



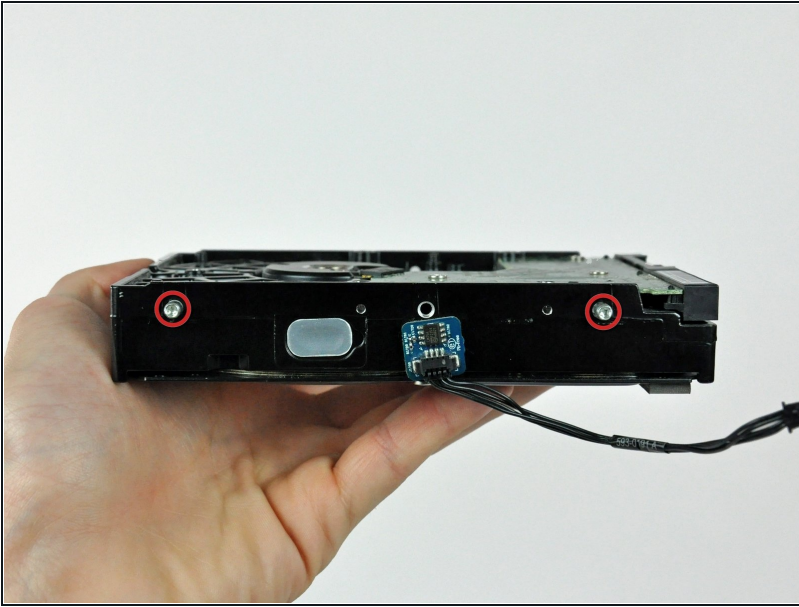
- Disconnect the SATA power cable by pulling its connector away from the hard drive.
- Remove the hard drive from the iMac.

Step 24 — Hard Drive



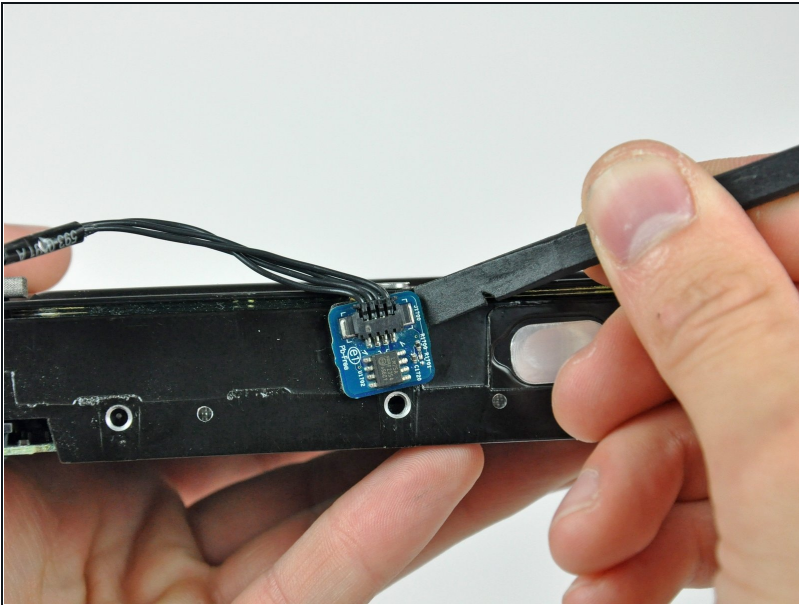
- Remove the two T8 Torx screws securing the hard drive bracket to the connector side of the hard drive.
- Remove the hard drive bracket.

Step 25



- Remove the two T8 Torx pins from the side of the hard drive.

Step 26



- Use the flat end of a spudger to pry the hard drive thermal sensor off the adhesive securing it to the hard drive.

To reassemble your device, follow these instructions in reverse order.