



Astro A20 Battery Replacement

If the Astro A20 will not turn on or the...

Written By: Jasmine Yarbrough



INTRODUCTION

If the Astro A20 will not turn on or the battery will not charge then you will need to replace the battery.

TOOLS:

[Spudger](#) (1)

[Phillips #1 Screwdriver](#) (1)

PARTS:

[Astro A50 Battery](#) (1)

Step 1 — Cushion



- Place one hand on the hard side of the headset ear portion and on the cushion.
- Lift the small portion on the edge of the cushion.

Step 2



- Slide the metal spudger underneath the lift part of the ear cushion.
- Pull the ear cushion while wedging the spudger around the edge of the ear cushion.

Step 3



- Remove the ear cushion from the headset.

Step 4 — Battery



- Place hand on the opposite side of the speaker.

Step 5



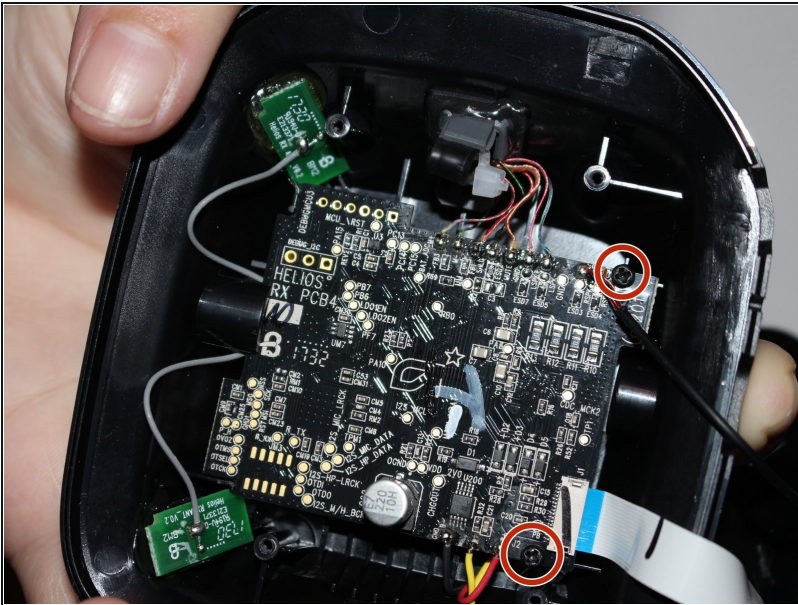
- Remove the four 7mm screws with a Phillips #1 screwdriver.
- ① You may want to use a 60mm screwdriver extension to reach the screws inside of the headset.

Step 6



- Lift and remove the speaker from the headset.

Step 7



- Remove the two 7mm screws with a Phillips #1 screwdriver.

Step 8



- Lift the motherboard to expose the battery.

Step 9



- Remove the battery with a plastic spudger.

To reassemble your device, follow these instructions in reverse order.