



Canon Selphy CP720 Cooling Fan Replacement

This guide demonstrates the replacement of the internal fan in the Selphy CP720.

Written By: Peter Ely



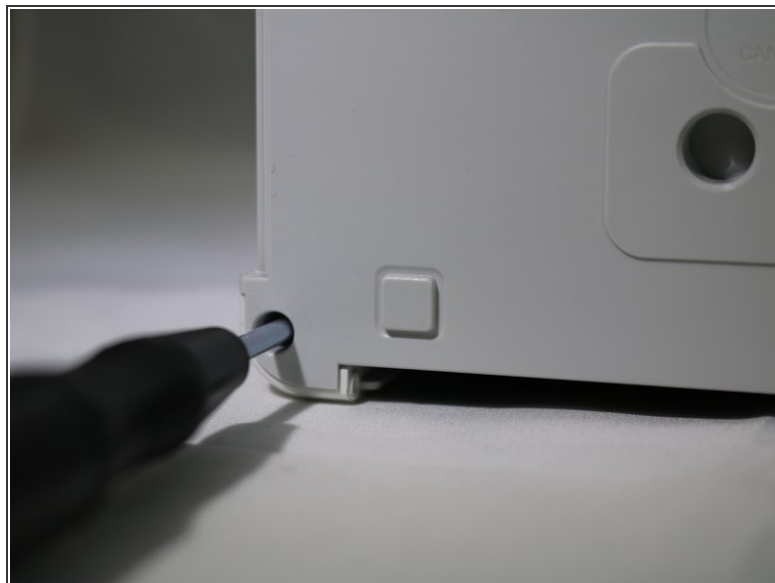
INTRODUCTION

This guide shows how to replace the cooling fan on the Selphy CP720. This is done to fix overheating problems caused by a faulty fan.

TOOLS:

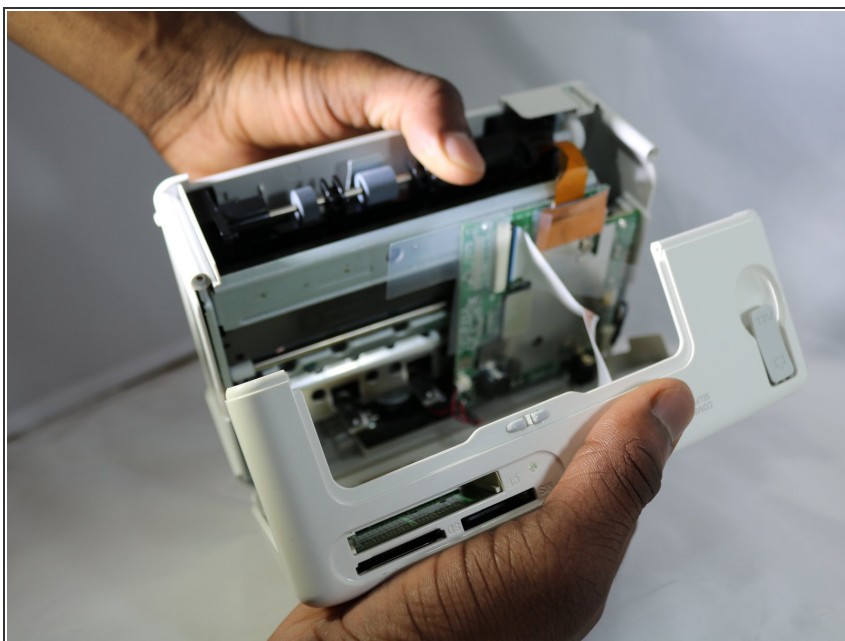
- [Phillips #1 Screwdriver](#) (1)
-

Step 1 — Cooling Fan



- Remove the four 8mm Phillips #1 screws from the bottom of the printer.

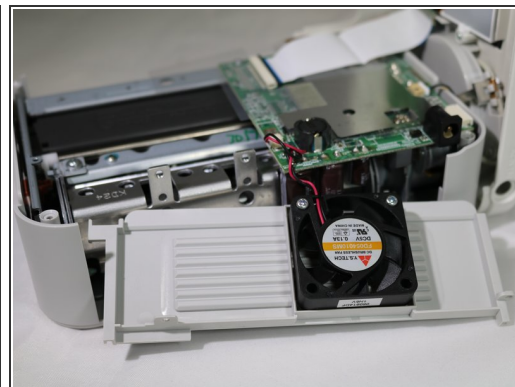
Step 2



- Gently lift the top half of the printer off its base

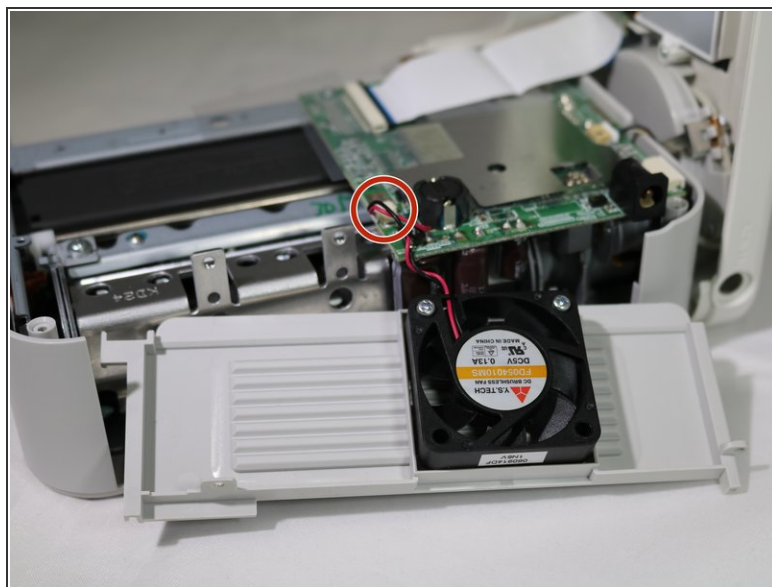
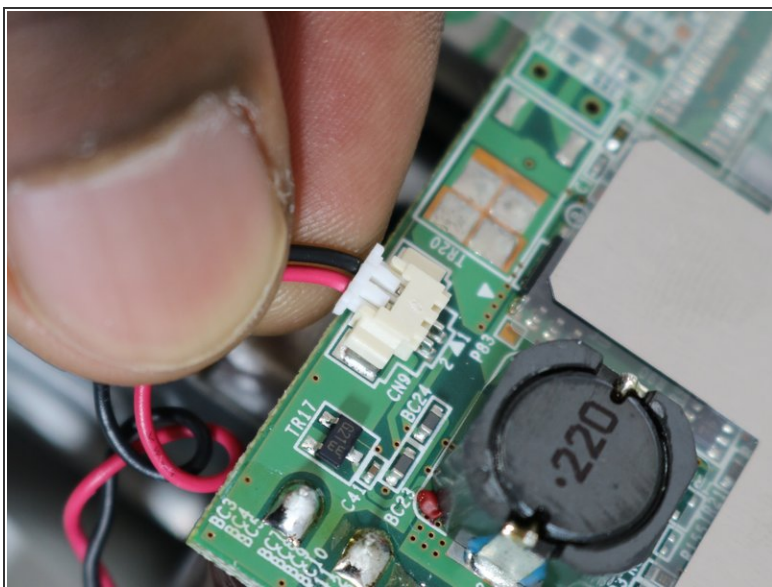
⚠ A data ribbon attaches the two halves, so don't pull hard and keep the two halves close together.

Step 3



- Remove the side panel by lifting it out.

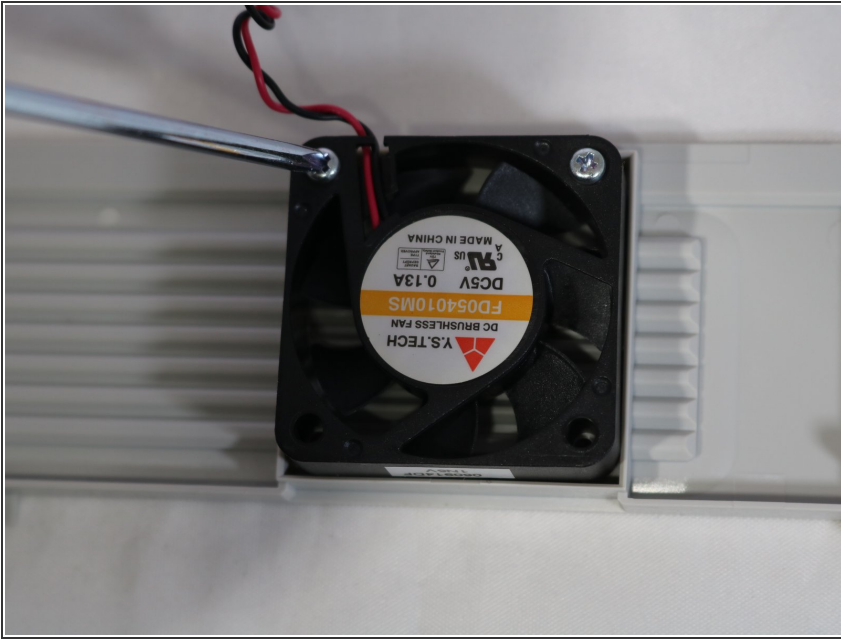
Step 4



- Unplug the fan from the circuit board by gently pulling on the wire connector at the base of the port.

⚠ Do not tug on the wires. Slowly increasing force as you pull is the best way to detach the wires.

Step 5



- Unscrew the two 8mm Phillips #1 screws from the fan.
- Remove the fan from the panel.

To reassemble your device, follow these instructions in reverse order.