



Samsung Blackjack Speaker Replacement

Replace a broken speaker on your Samsung Blackjack.

Written By: Kristin Manna



INTRODUCTION

Use this guide to remove the speaker.



TOOLS:

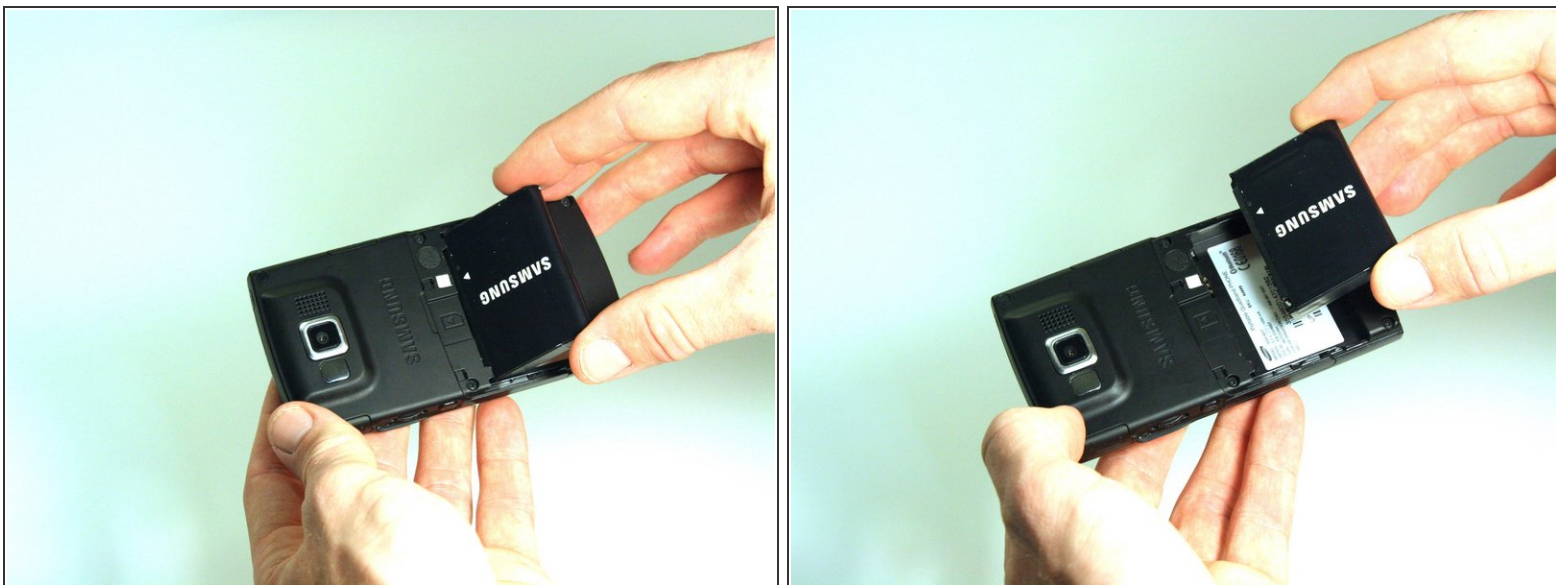
- [Phillips #00 Screwdriver](#) (1)
 - [Spudger](#) (1)
 - [Tweezers](#) (1)
-

Step 1 — Battery Cover



- Hold the device with the screen facing away from you and the camera towards you.
- Place your thumb on the bottom half of the phone and slide the cover off while gently pushing down on the cover.

Step 2 — Battery



- Place your fingers on both sides of the bottom of the battery and lift upwards.
- Pull the battery away from the phone.

Step 3 — SIM Card



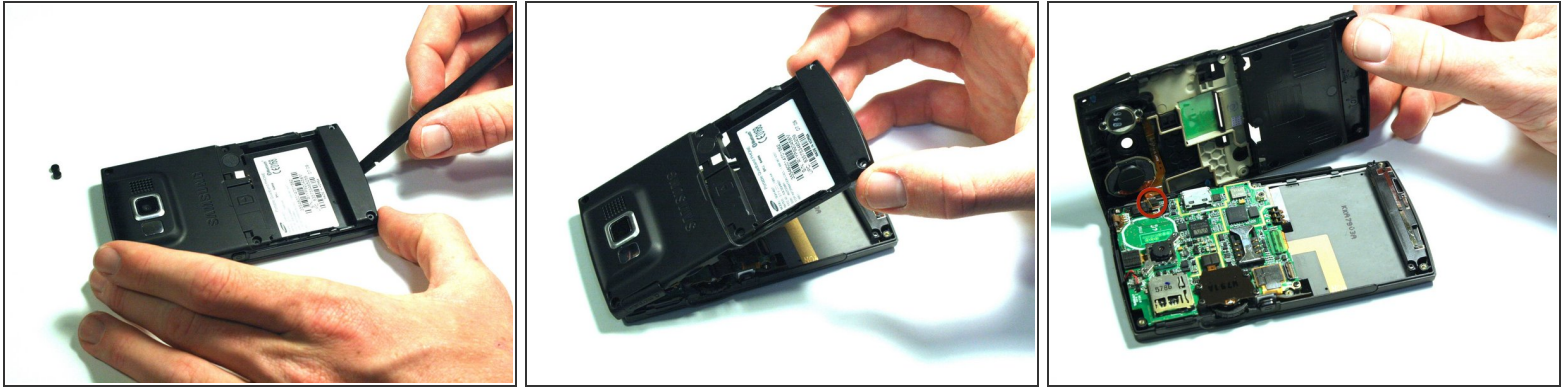
- Place your thumb on the SIM card.
- Slide the card out of the slot.

Step 4 — Back Phone Casing



- Use the spudger to remove the rubber stoppers from the top of the cover.
- Use the Phillips 00 screw driver to remove the screws from each of the four corners and the two on sides (six total).

Step 5

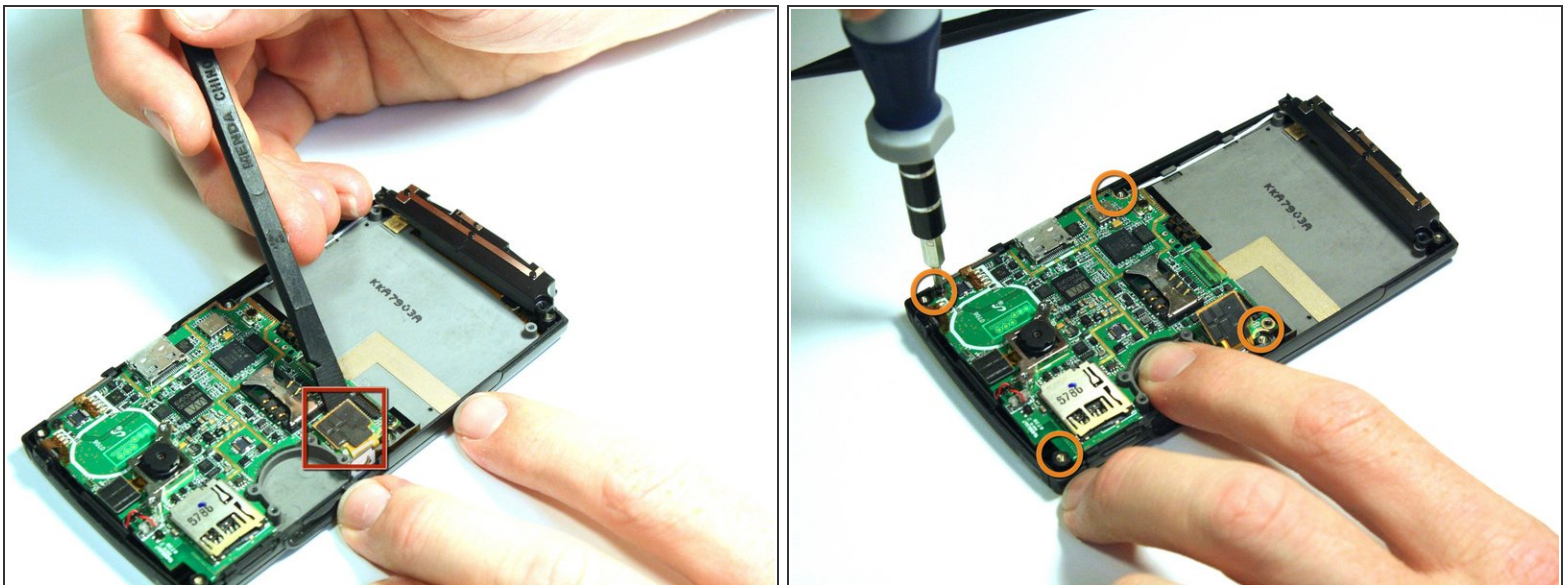


- Use the spudger to loosen and separate the front and back covers.
- Pick up the back cover once loosened.

⚠ The front and back covers will be attached to each other by a gold wire.

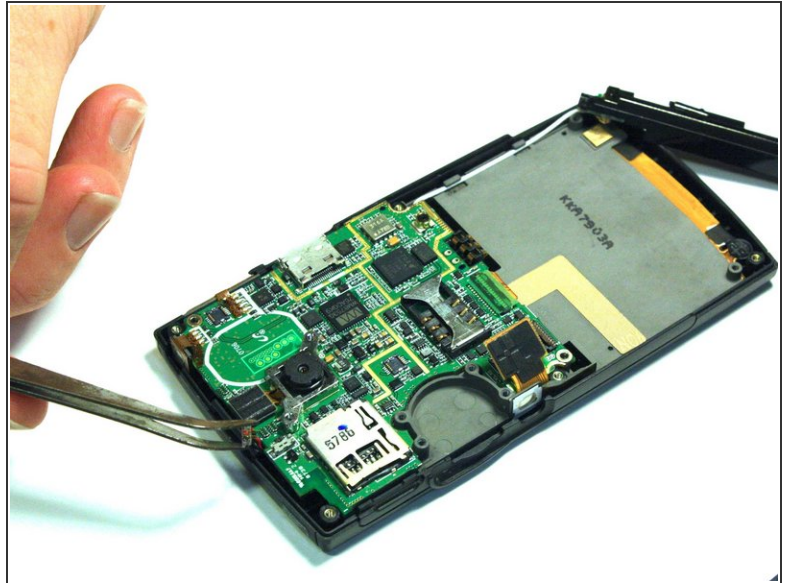
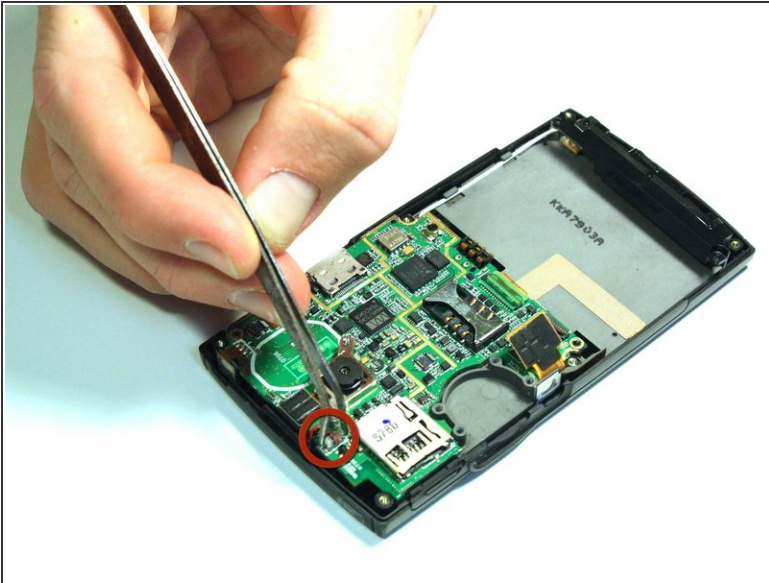
- Remove the gold wire connecting the back cover to the motherboard to completely separate the covers.

Step 6 — Motherboard



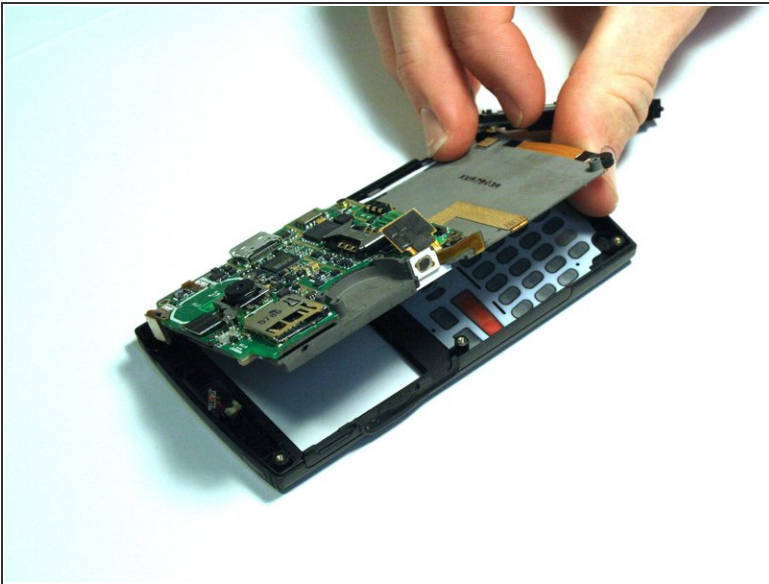
- Use the spudger to unsnap the black rectangular connection from the motherboard.
- Use the Phillips 00 screwdriver to remove all of the screws that hold the motherboard in place.

Step 7



- Use the tweezers to unsnap the connection between the motherboard and the speaker. The speaker is attached to the front casing.

Step 8



- ① Once all of the connections have been snapped off of the motherboard, the motherboard can be removed.
- Lift up on the motherboard and it will come free of the front casing.

Step 9 — Speaker



- Use the spudger to wedge between the speaker and the speaker's casing.
- Use the spudger to pry on the speaker until it comes free from the casing.

To reassemble your device, follow these instructions in reverse order.