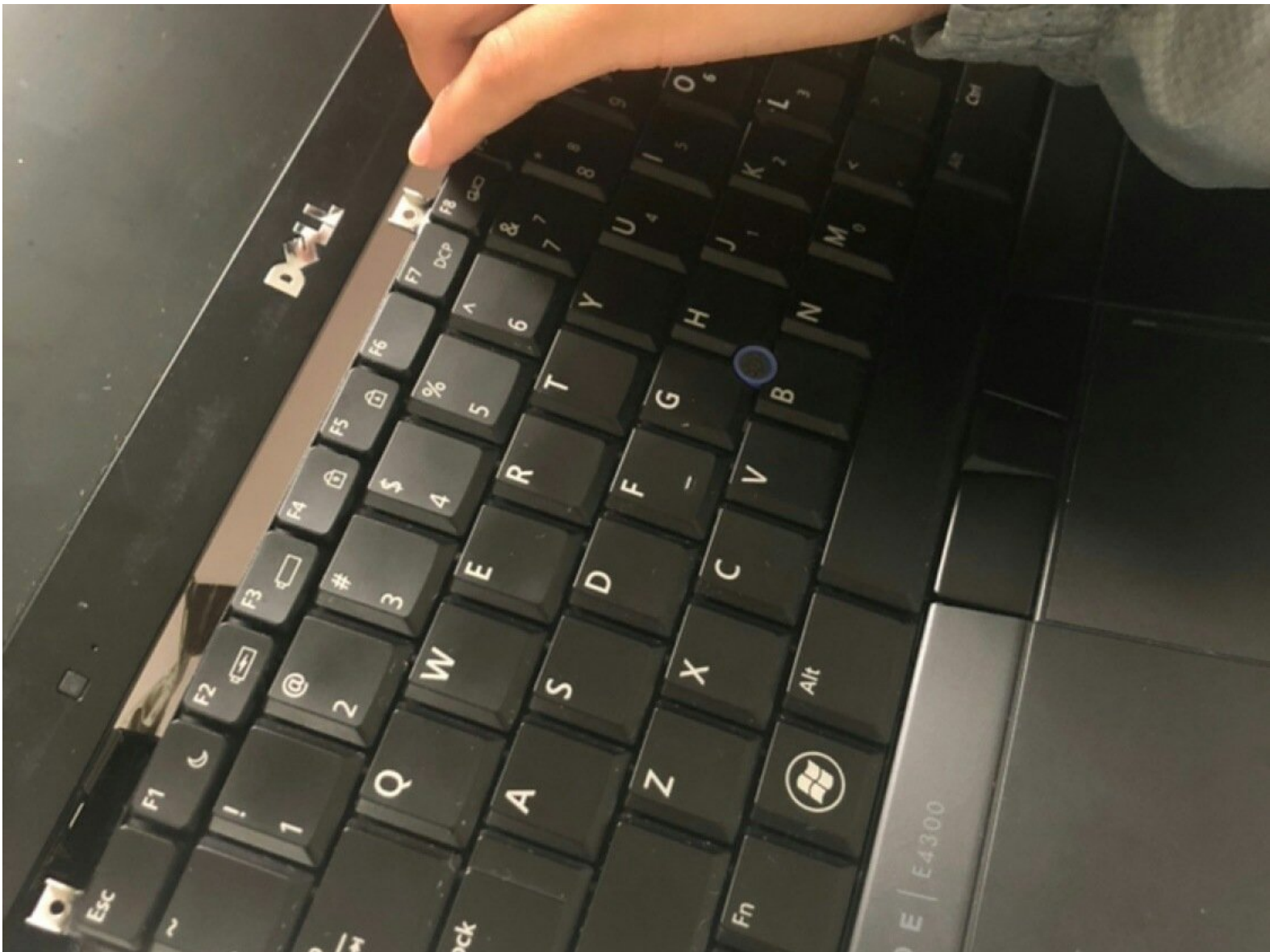




# Dell Latitude E4300 Keyboard Replacement

This guide will advise you on how to replace the keyboard on your Dell Latitude E4300.

Written By: Maritza Martinez



---

## INTRODUCTION

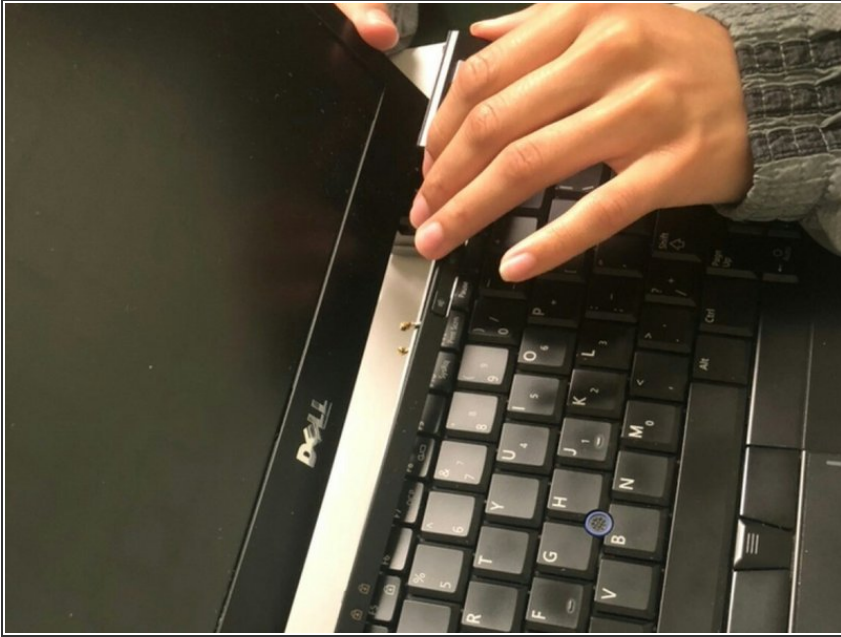
The keyboard is a crucial component to your laptop and because it is fragile there is a higher risk of breaking. Use this replacement guide to replace your keyboard. Make sure that you are careful when working with the keyboard because of its fragility. The keyboard must also be removed if you are attempting to replace any components within the laptop, for example, the hard drive or motherboard.



### TOOLS:

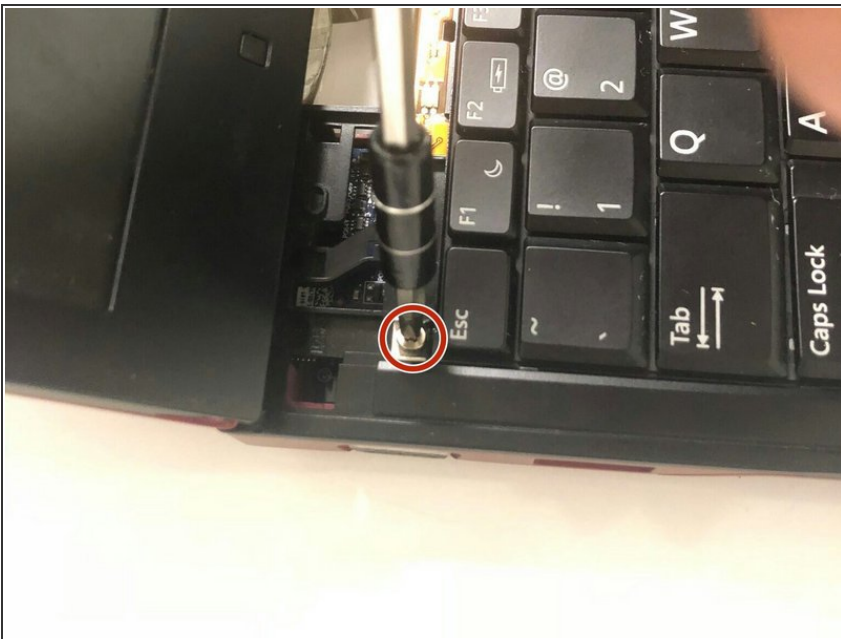
- [Phillips #1 Screwdriver](#) (1)
-

## Step 1 — Keyboard



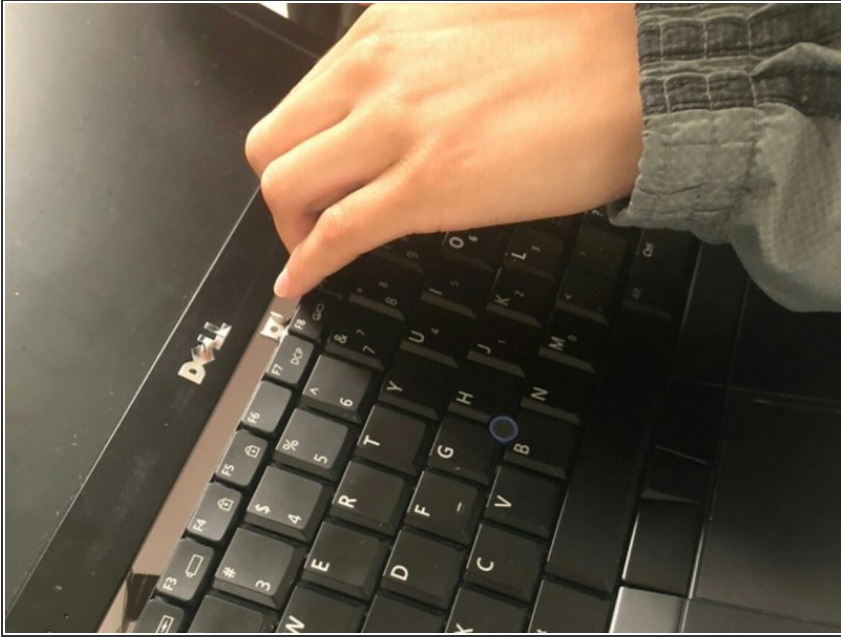
- Open the laptop and remove the small panel located above the keyboard.

## Step 2



- Using a Phillips 1 Screwdriver, unscrew the three M2x3-mm screws located above the keyboard where the small panel was originally.

## Step 3



- Pull off keyboard forward and then outwards.
- ⓘ The keyboard is fragile, so make sure you pull the keyboard off carefully.

To reassemble your device, follow these instructions in reverse order.