



Logitech C920 Webcam Disassembly

Written By: Jose Gustavo Abreu Murta





TOOLS:

Chave philips pequena, ferro de soldar (1)



PARTS:

solda, fita crepe, tubo termo-retrátil (1)

Step 1 — Logitech C920 Webcam Disassembly



- On the bottom side of the webcam, remove the stickers from both sides

Step 2



- Remove the four Phillips screws.
- Press into the holes to unlock the side covers.

Step 3



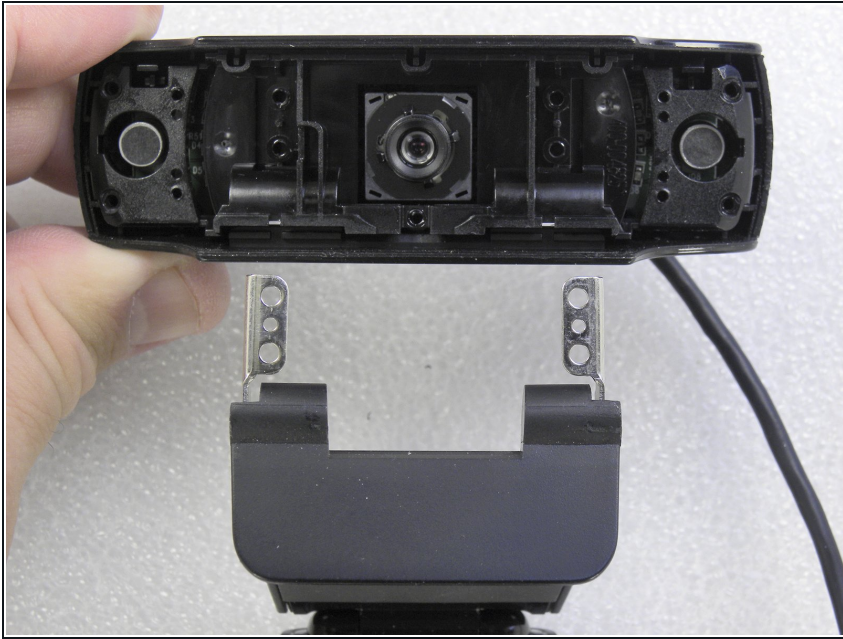
- Once you've removed the side covers, unscrew all eight Phillips screws highlighted.

Step 4



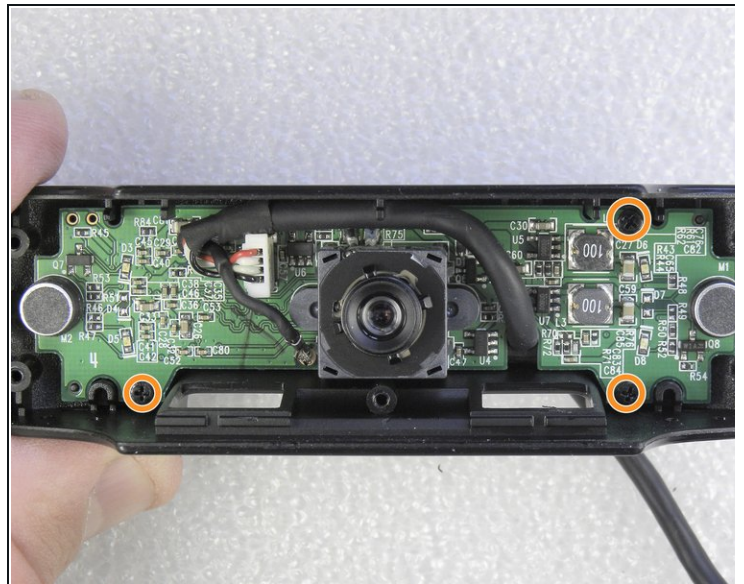
- Remove the lens's cover.
- Remove the five Phillips screws of the metal bracket.
- Remove the rubber pieces of both microphones (one on each side).

Step 5



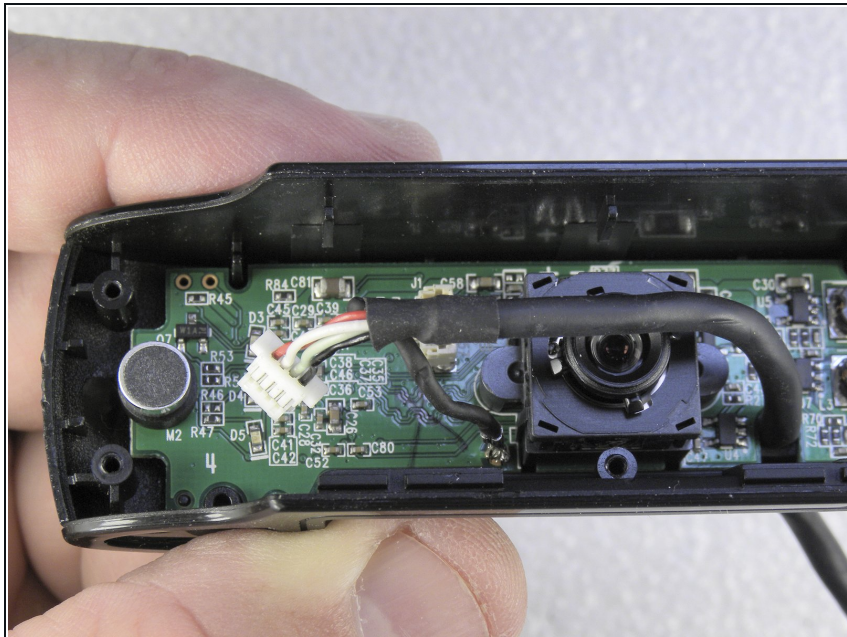
- Carefully remove the metal supports from the webcam's base.

Step 6



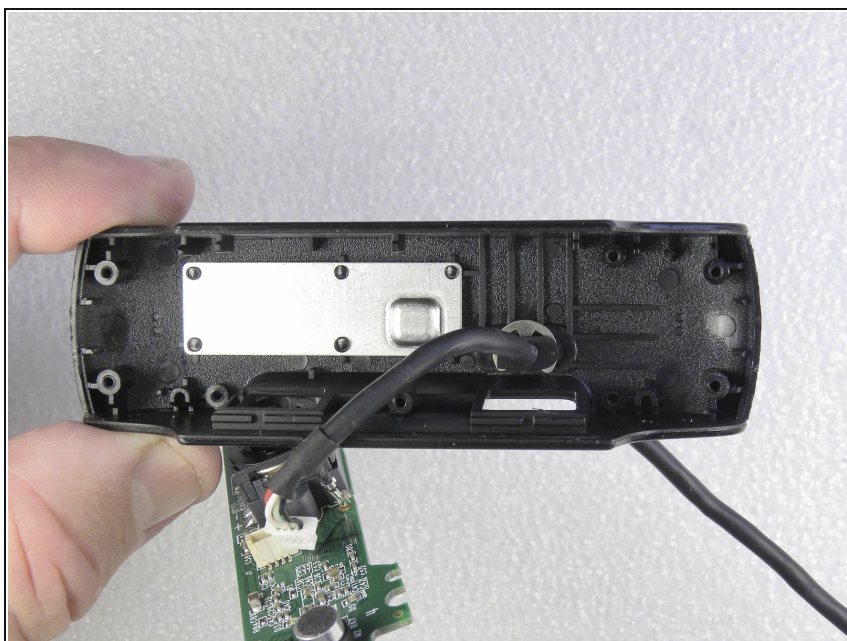
- Carefully remove the base of the plastic support. Loosen the three screws that secure the electronic circuit.

Step 7



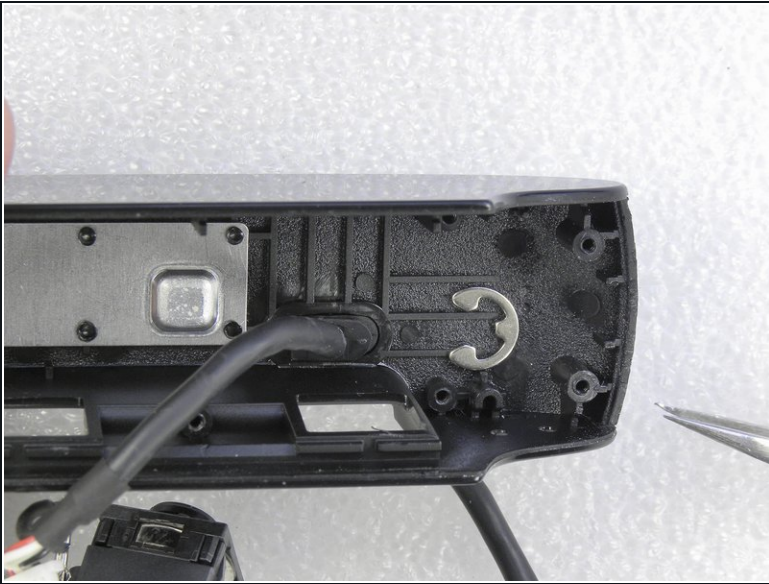
- Disconnect the USB cable connector.

Step 8



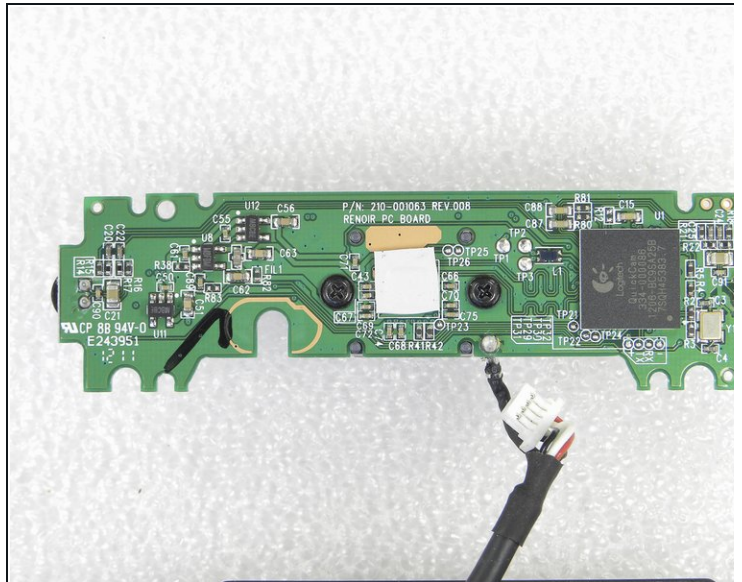
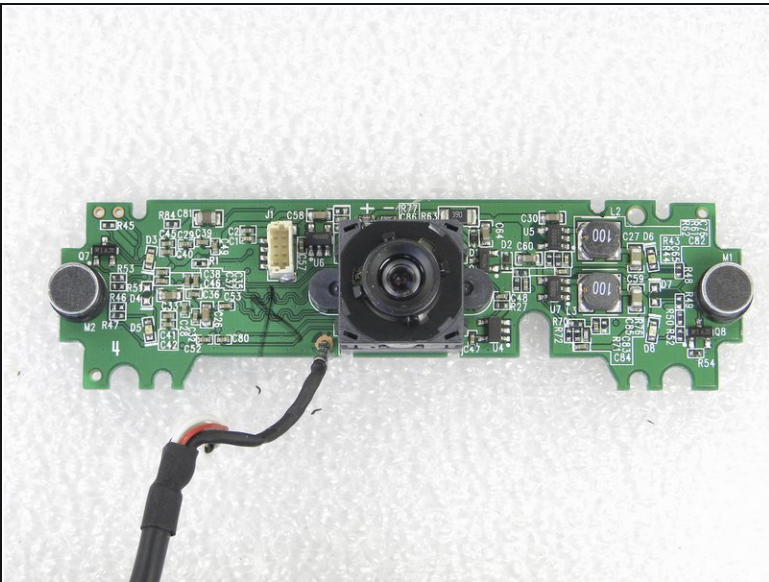
- Remove the electronic circuit.

Step 9



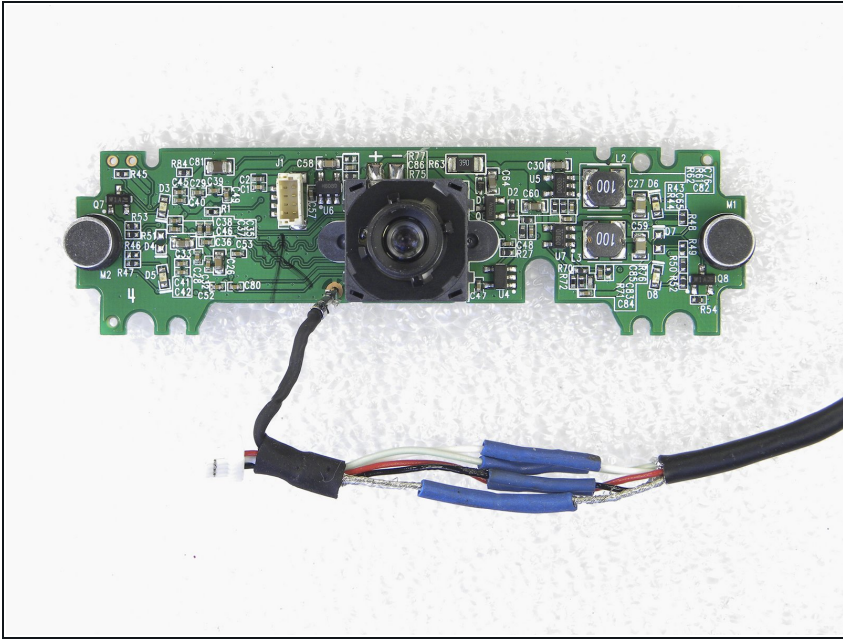
- Release the clip that secures the cable holder. Pull this cable holder out of the camera.

Step 10



- Front and back images of the webcam's electronic circuit board.

Step 11



- The problem was the broken cable on the back of the camera. I've cut the faulty part and redid the connections by soldering them and insulated them with heat shrink tubes.

Step 12



- The repaired cable is reattached to the camera. Wrapped it with some masking tape. Camera tested: OK!
- Assemble the webcam following the steps in a reverse order.

To reassemble your device, follow these instructions in reverse order.