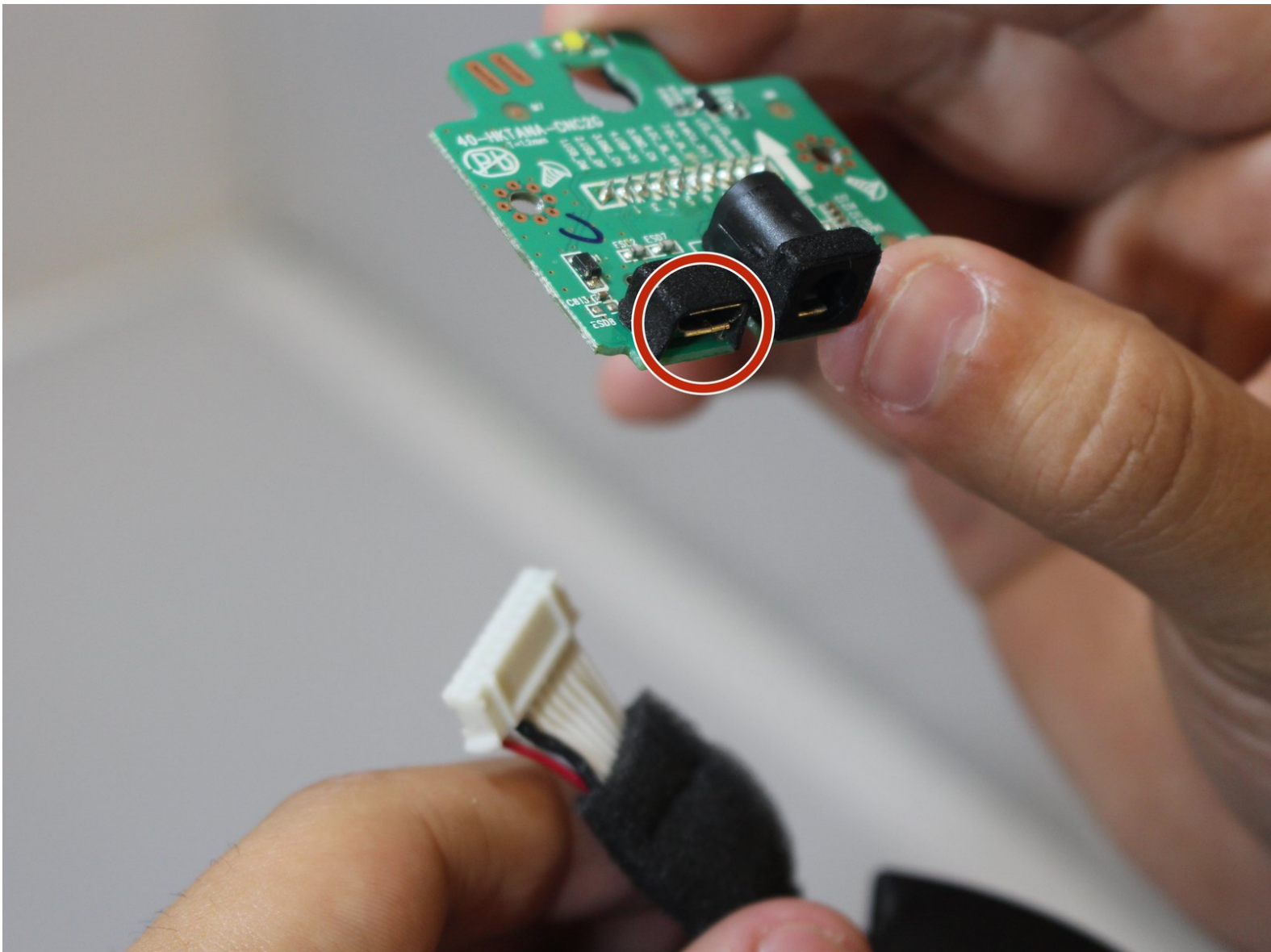




# Harman Kardon Invoke Service Port Replacement

If your Invoke is not connecting to your computer in order to be serviced, there might be a problem with the service port and should be replaced.

Written By: Angel A. Grageda



## INTRODUCTION

If your Invoke is not connecting to your computer in order to be serviced, there might be a problem with the service port and should be replaced. For this replacement you will need a metal spudger and a #10 Torx screwdriver.



### TOOLS:

- [Metal Spudger](#) (1)
  - [T10 Torx Screwdriver](#) (1)
-

## Step 1 — Remove the rubber base



- Use a metal spudger to remove the rubber bottom.

## Step 2 — Remove the base screws



- Use a #10 Torx screwdriver to remove four 14 mm screws.



### Step 3 — Remove the base



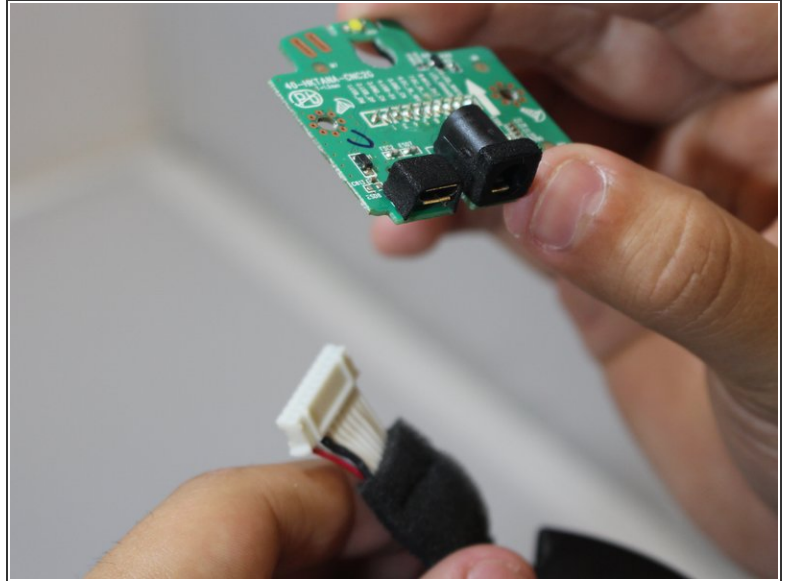
- Firmly grip the bottom and wiggle upwards to remove the base.

### Step 4 — Removing the board



- Use a #10 Torx screwdriver to remove two 10 mm screws from board attached to ports.
- Pull board up lightly.

## Step 5 — Disconnect the board



- Pull cable to disconnect board from device.
- ⓘ For replacement of service port, you will have to replace whole board that the port is attached to.

To reassemble your device, follow these instructions in reverse order.