



HP LaserJet P1102w Drive Belt Replacement

How to remove the drive belt in a HP LaserJet P1102w.

Written By: Jerome Etten



INTRODUCTION

These steps will show how to replace the drive belt from the printer. This guide may be used if the rollers of your printer are working incorrectly. The drive belt gears are very specific in fit and position so take a good look at their locations before removing them.

TOOLS:

- [Tweezers](#) (1)
 - [Phillips #1 Screwdriver](#) (1)
 - [Spudger](#) (1)
-

Step 1 — Left Side Panel



- Flip printer on it's back. Using the plastic spudger, pry off front panel. There will be two main points to focus as shown.

⚠ Pry carefully to not break any plastic.

Step 2



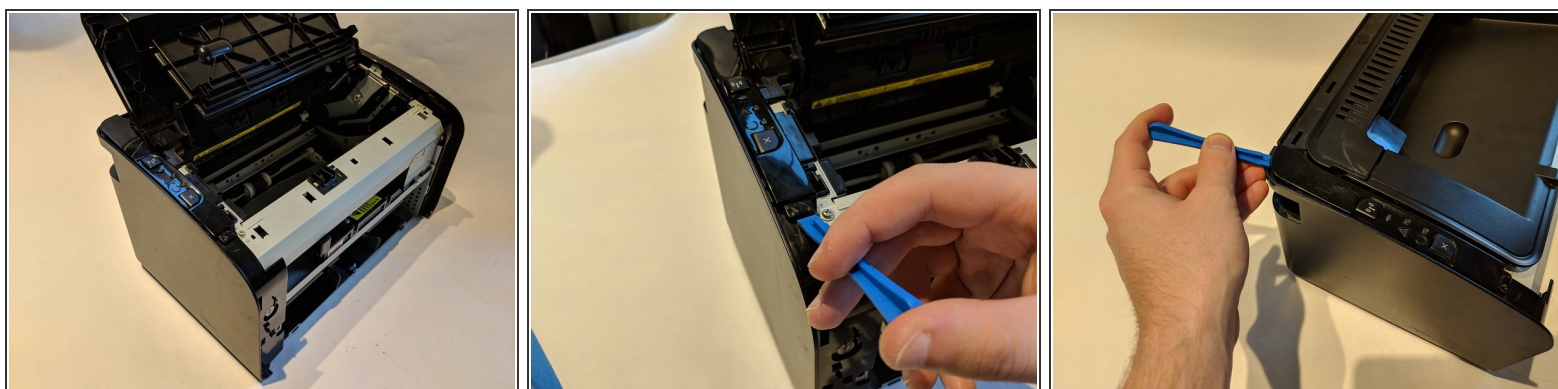
- Now that the pry points are free lift up the front panel.

Step 3



- Unscrew the #1 Phillips screw 6mm on the back of the printer.

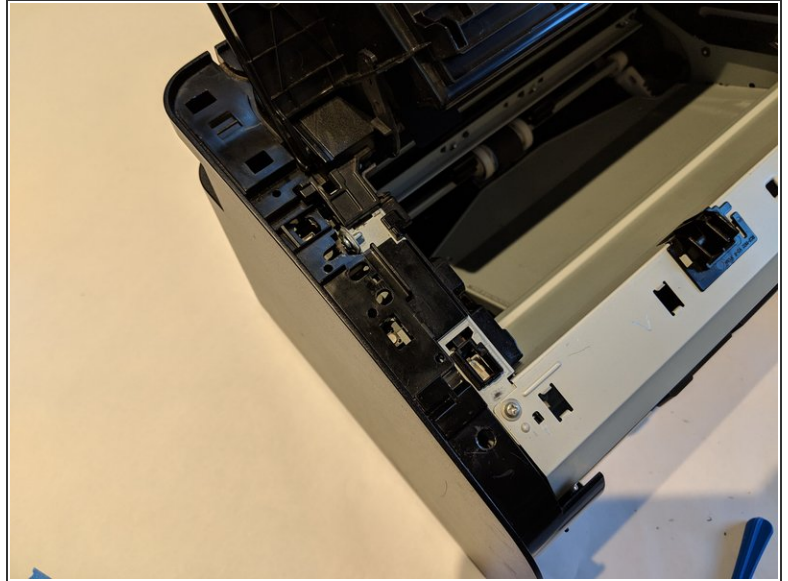
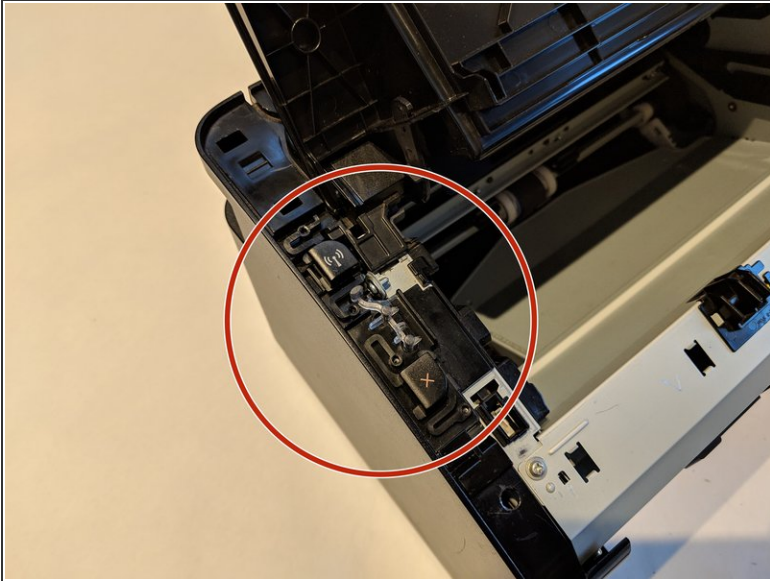
Step 4



- Using the plastic spudger, remove the button housing from the top left of printer.

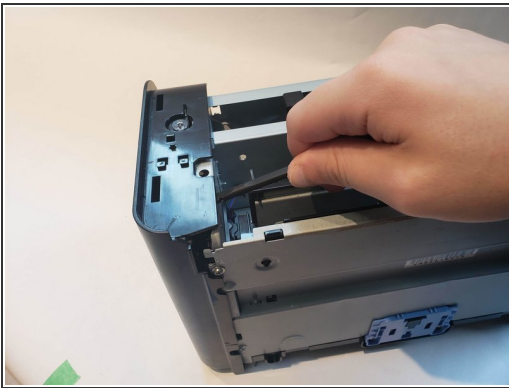
⚠ Pry carefully to not break any plastic.

Step 5



- Once the housing is removed, remove the three buttons.

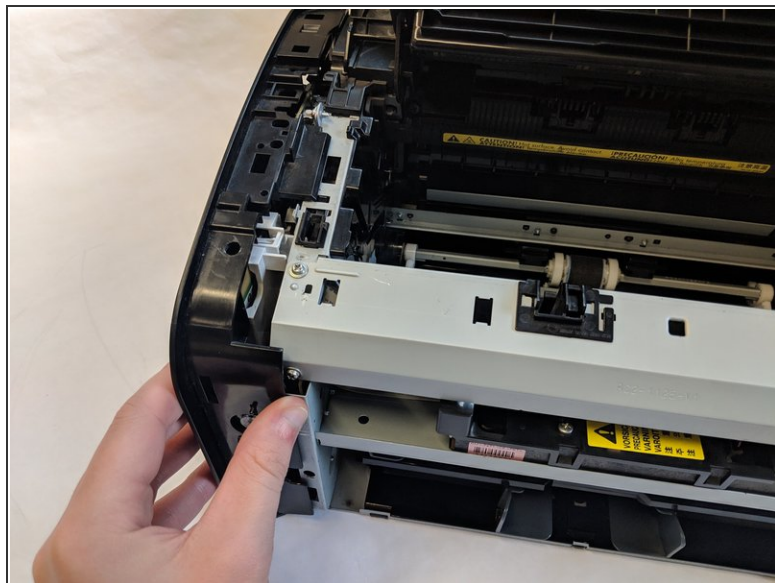
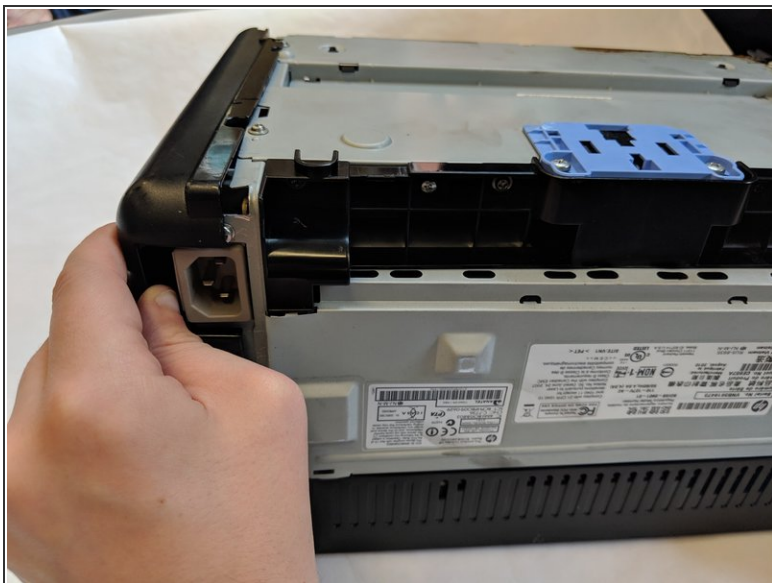
Step 6



- Use the plastic spudger to remove the side panel. There are three main prying points as shown.

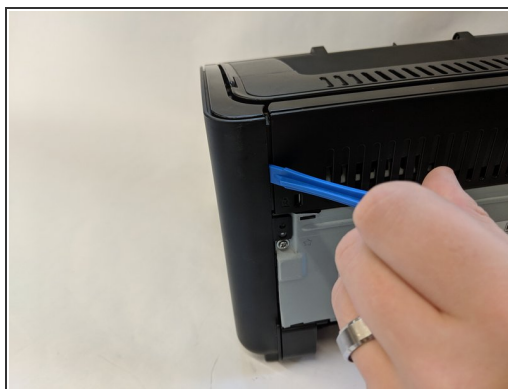
⚠ Pry carefully to not break any plastic.

Step 7



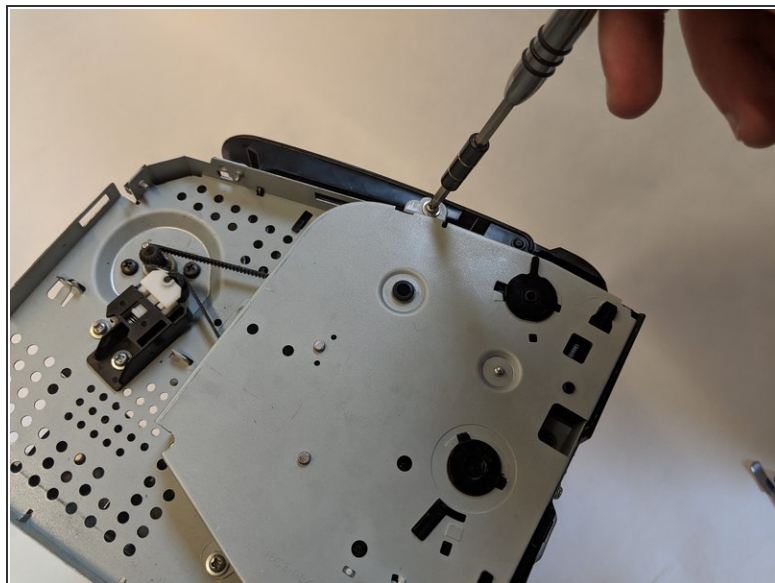
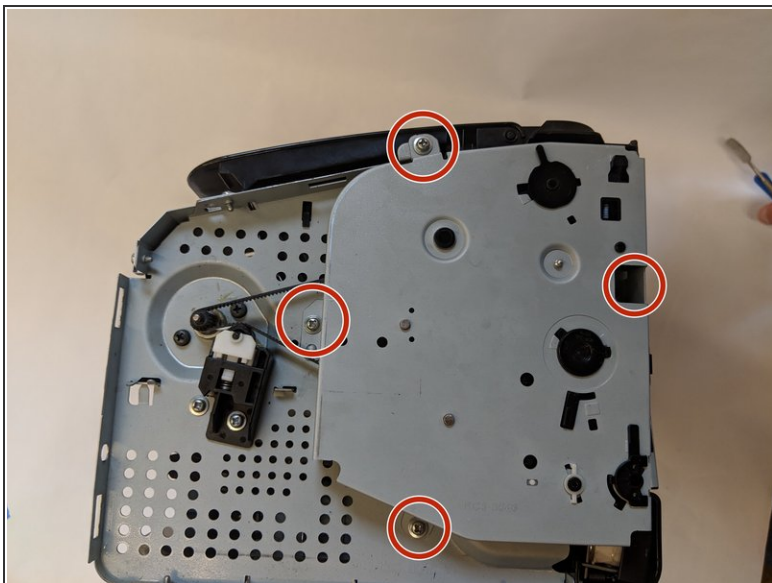
- With all pry points free, remove the side panel.

Step 8 — Drive Belt



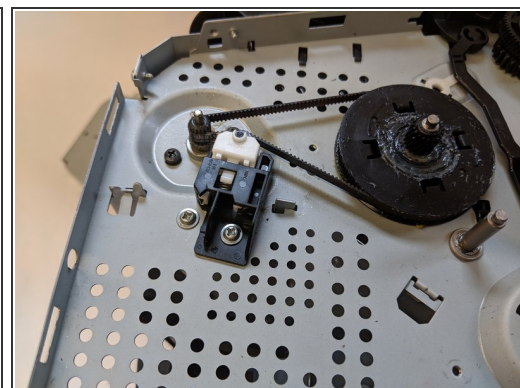
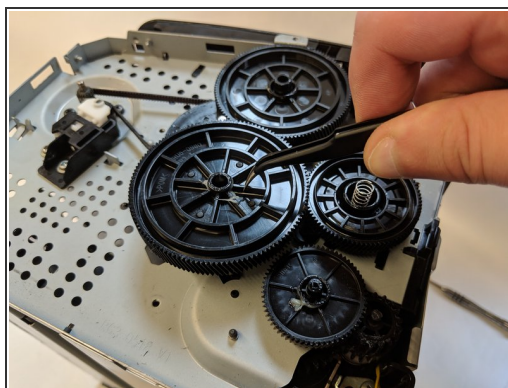
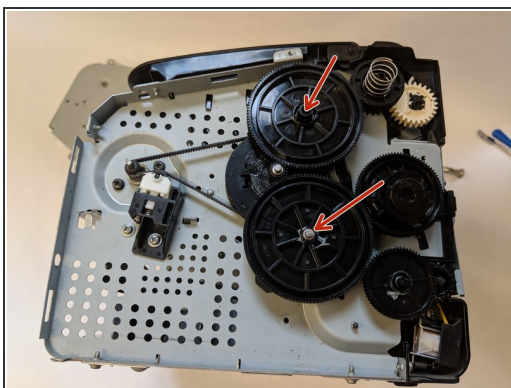
- ⓘ Refer to the prerequisite guide to take off the front panel off.
- With a #1 Phillips screwdriver remove only the top Phillips 60mm screw.
- With the spudger pry the side panel off. There will be four flanges to unhitch.

Step 9



- With side panel removed, there will be four Phillips 60mm screws to unscrew using a #1 Phillips screwdriver.

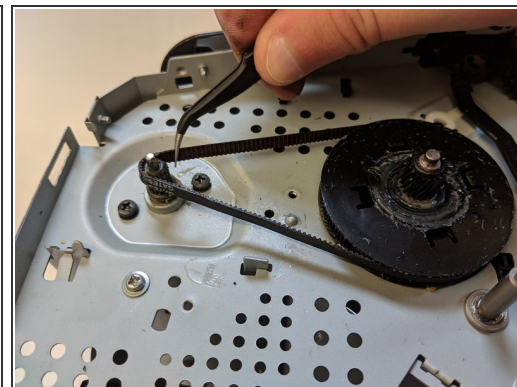
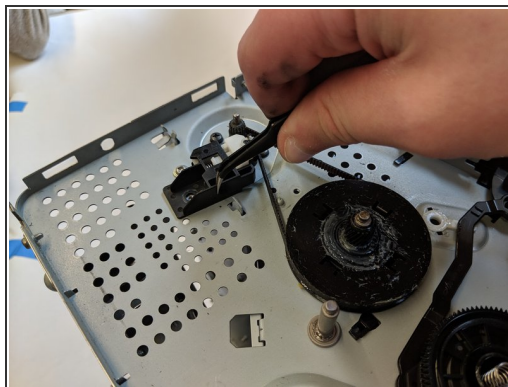
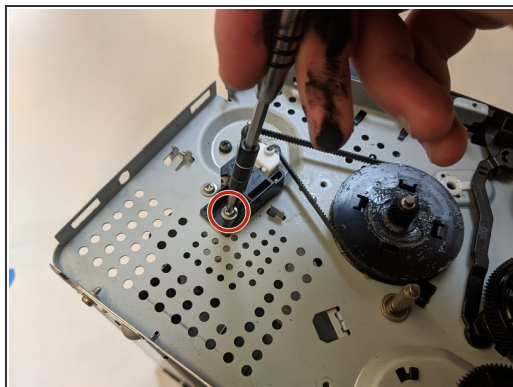
Step 10



- Remove top two big gears using tweezers.

⚠ Take note of gear placement.

Step 11



- With the #1 Phillips screwdriver remove the 60mm Phillips screw holding the belt tension-er.
- With the screw removed, pull tension-er out.
- Use tweezers to remove the loose drive belt.

To reassemble your device, follow these instructions in reverse order.