



Huawei Pronto LTE Battery Replacement

Replace the battery in the Huawei Pronto LTE.

Written By: Crystal Edwards



INTRODUCTION

The battery is an essential component for the phones ability to function. This guide will clearly show you how to remove the battery without damaging other parts of the phone. Before you start please have the correct tools listed underneath as these tools will ensure a successful battery replacement.



TOOLS:

- [iFixit Opening Tools](#) (1)
 - [JIS #000 Screwdriver](#) (1)
 - [ESD Safe Tweezers Blunt Nose](#) (1)
 - [Metal Spudger](#) (1)
-

Step 1 — Battery



- Remove the back cover of your Huawei Pronto LTE using an opening tool.
- Lift the back cover off of the device after the four corners are unlatched.

Step 2



- Remove the 15 screws on the back of the device using a Phillips #000 screwdriver.
- ⓘ Hold the device in place while you are doing this step.
- Lift the inner cover gently by using a spudger.


Step 3



- Detach the yellow latches along the sides to remove the motherboard.

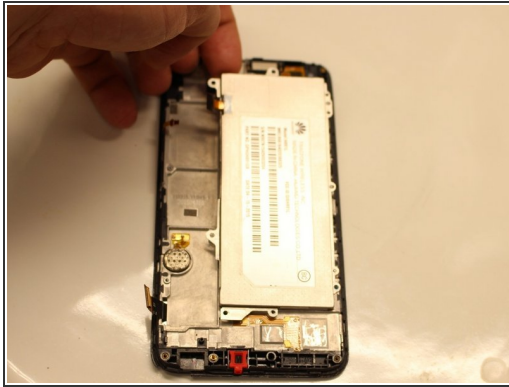
Step 4



 Ensure that all latches are detached and that there are no extra screws to avoid damaging the motherboard.

- Use tweezers to gently remove the motherboard from the device.

Step 5



- The battery should be revealed once the motherboard is removed.
- Lift the battery from the top left corner.

To reassemble your device, follow these instructions in reverse order.