



# Huawei Pronto LTE Display Screen Assembly Replacement

The display screen is a vital part of the...

Written By: Crystal Edwards



# INTRODUCTION

The display screen is a vital part of the device. Seeing what you're doing on your phone helps to navigate each move you make in the correct order.

---

## TOOLS:

[iFixit Opening Tool](#) (1)  
[JIS #000 Screwdriver](#) (1)  
[ESD Safe Blunt Nose Tweezers](#) (1)  
[Metal Spudger](#) (1)  
[Phillips #000 Screwdriver](#) (1)  
[Spudger](#) (1)

---

## Step 1 — Battery



- Remove the back cover of your Huawei Pronto LTE using an opening tool.
- Lift the back cover off of the device after the four corners are unlatched.

## Step 2



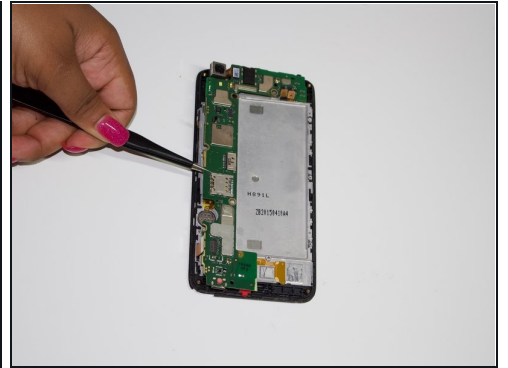
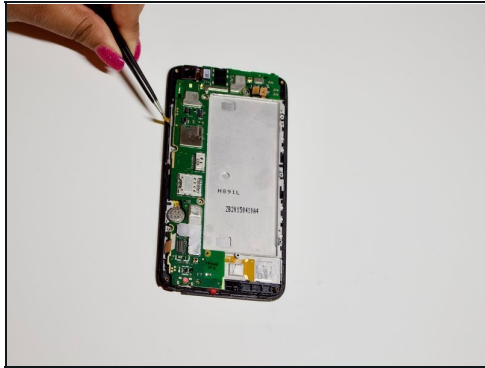
- Remove the 15 screws on the back of the device using a Phillips #000 screwdriver.
- ① Hold the device in place while you are doing this step.
- Lift the inner cover gently by using a spudger.

## Step 3



- Detach the yellow latches along the sides to remove the motherboard.

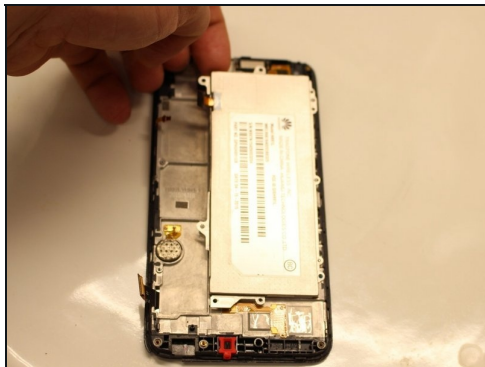
## Step 4



⚠ Ensure that all latches are detached and that there are no extra screws to avoid damaging the motherboard.

- Use [tweezers](#) to gently remove the motherboard from the device.

## Step 5



- The battery should be revealed once the motherboard is removed.
- Lift the battery from the top left corner.

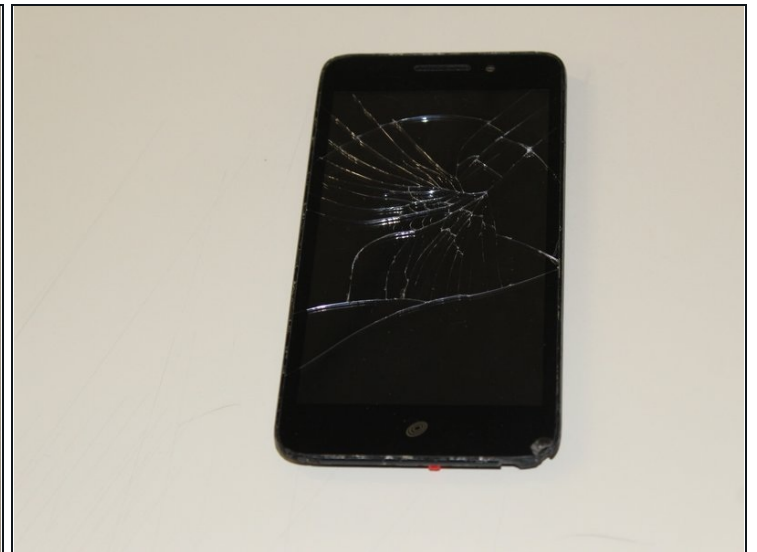


## Step 6 — Screen Assembly



- Remove the motherboard. Refer to the Motherboard Replacement Guide.
- Remove the battery.

## Step 7



- Once the battery is removed the screen will be visible.

To reassemble your device, follow these instructions in reverse order.