



LeapFrog LeapPad Ultimate Camera Replacement

A guide on how to replace the camera in a LeapFrog LeapPad Ultimate.

Written By: Nabil Mustafa



INTRODUCTION

A guide on how to replace the camera in a LeapFrog LeapPad Ultimate.



TOOLS:

- [Phillips #1 Screwdriver](#) (1)
 - [iFixit Opening Tools](#) (1)
 - [Tweezers](#) (1)
-

Step 1 — Back Panel



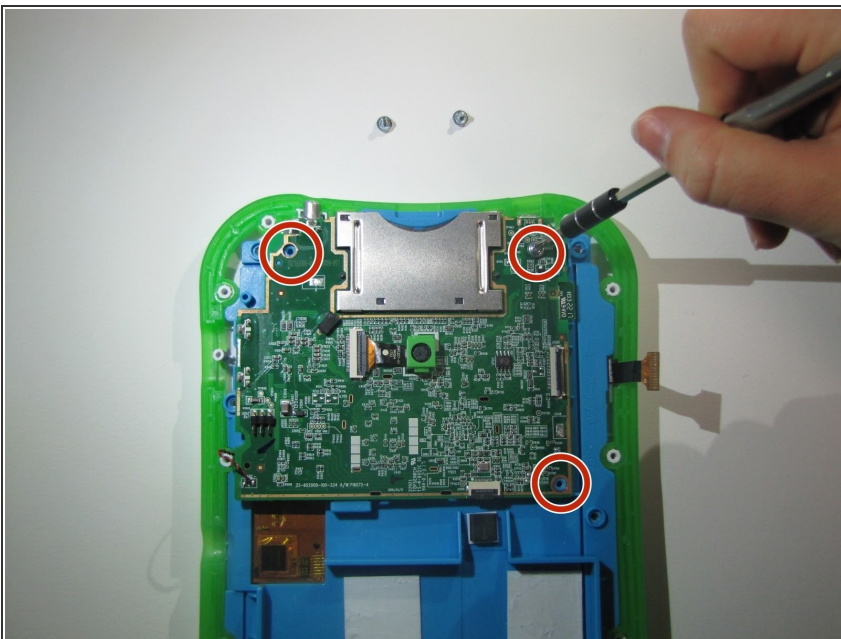
- Flip over the Pad to its back side to begin the removal of the back panel.
- Begin by removing the blue rim along the edge of the device. It runs along the green silicone lining.
- ⚠ This is very difficult to remove , so do be patient. To help remove the seal, both a metal spudger and plastic opening tool may be used.
- ⓘ Remove the pen from its place before starting to avoid tangling.

Step 2



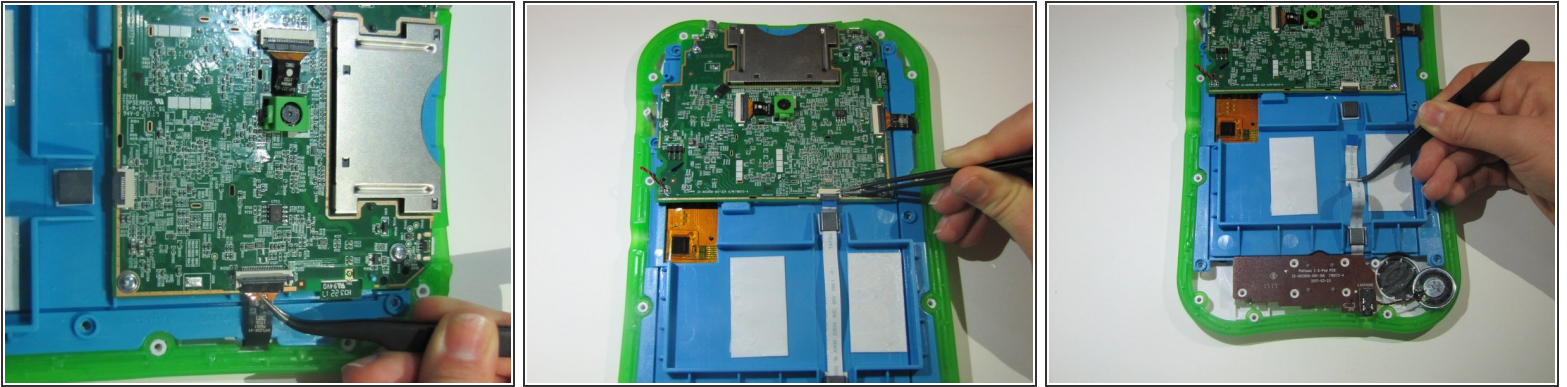
- Once the blue rim is removed, the 12 screws will be visible.
- Use the Phillips #1 screwdriver to unscrew all 12 screws.

Step 3 — Camera



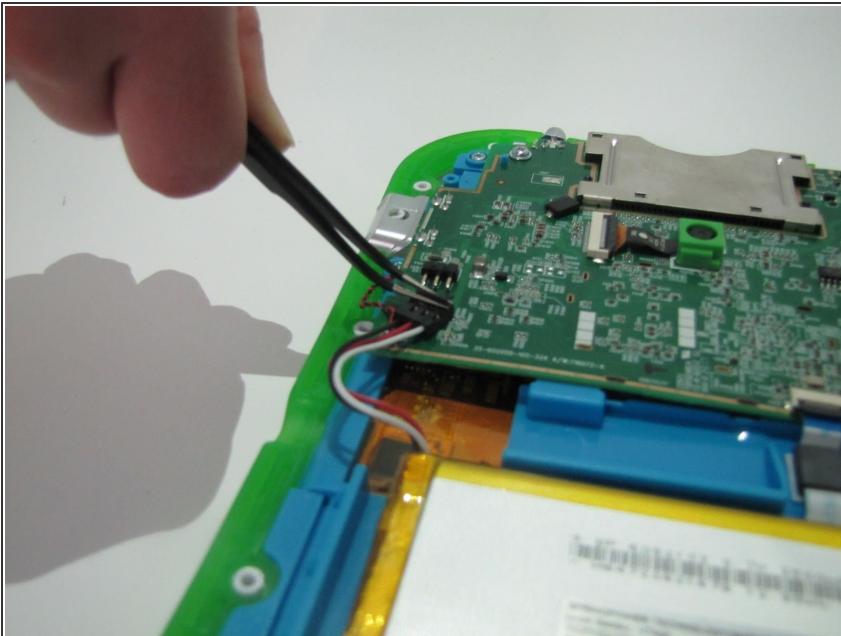
- Remove the 3 screws on each corner of the motherboard

Step 4



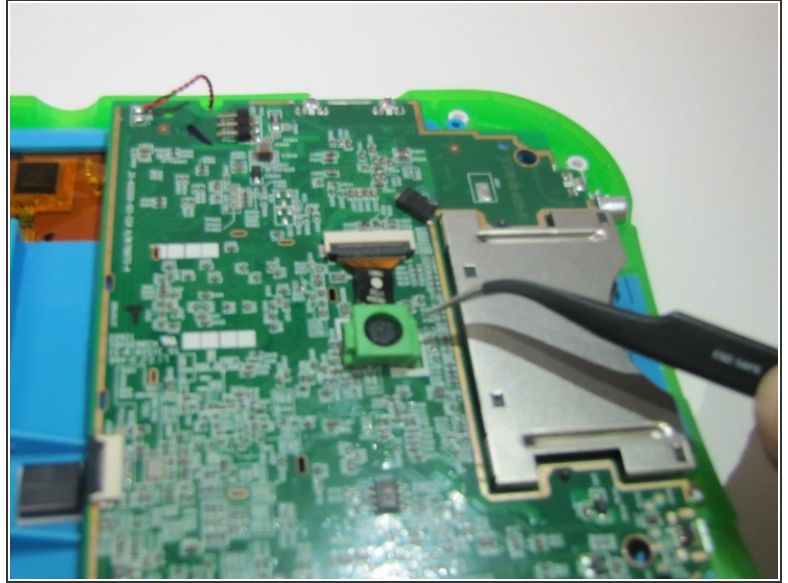
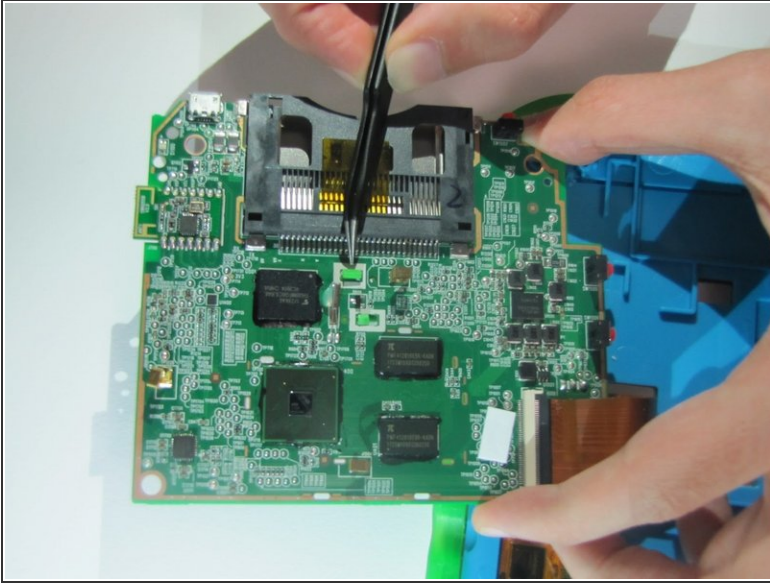
- Remove the ribbon on the bottom of the motherboard and the ribbon on the left side of the motherboard.
- ⓘ There will be a small black switch on top of the ribbons that you must flip to take them out.

Step 5



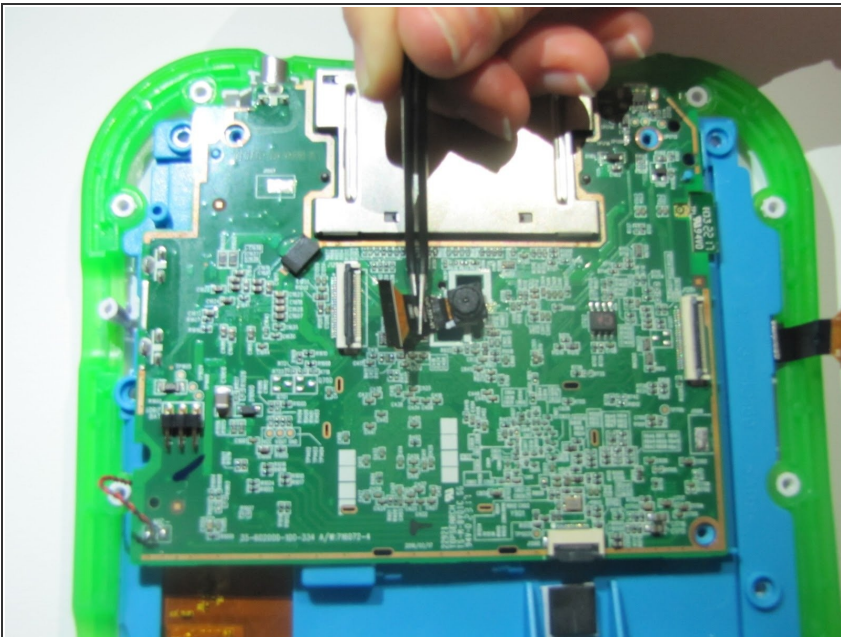
- Remove the 3-pin connector on the top left side of the motherboard.

Step 6



- Flip the motherboard to its back side and pinch the 2 green hooks to remove the camera cover

Step 7



- Remove the ribbon connecting the camera to the motherboard. You have now taken out the camera and can replace it with a new one.

To reassemble your device, follow these instructions in reverse order.