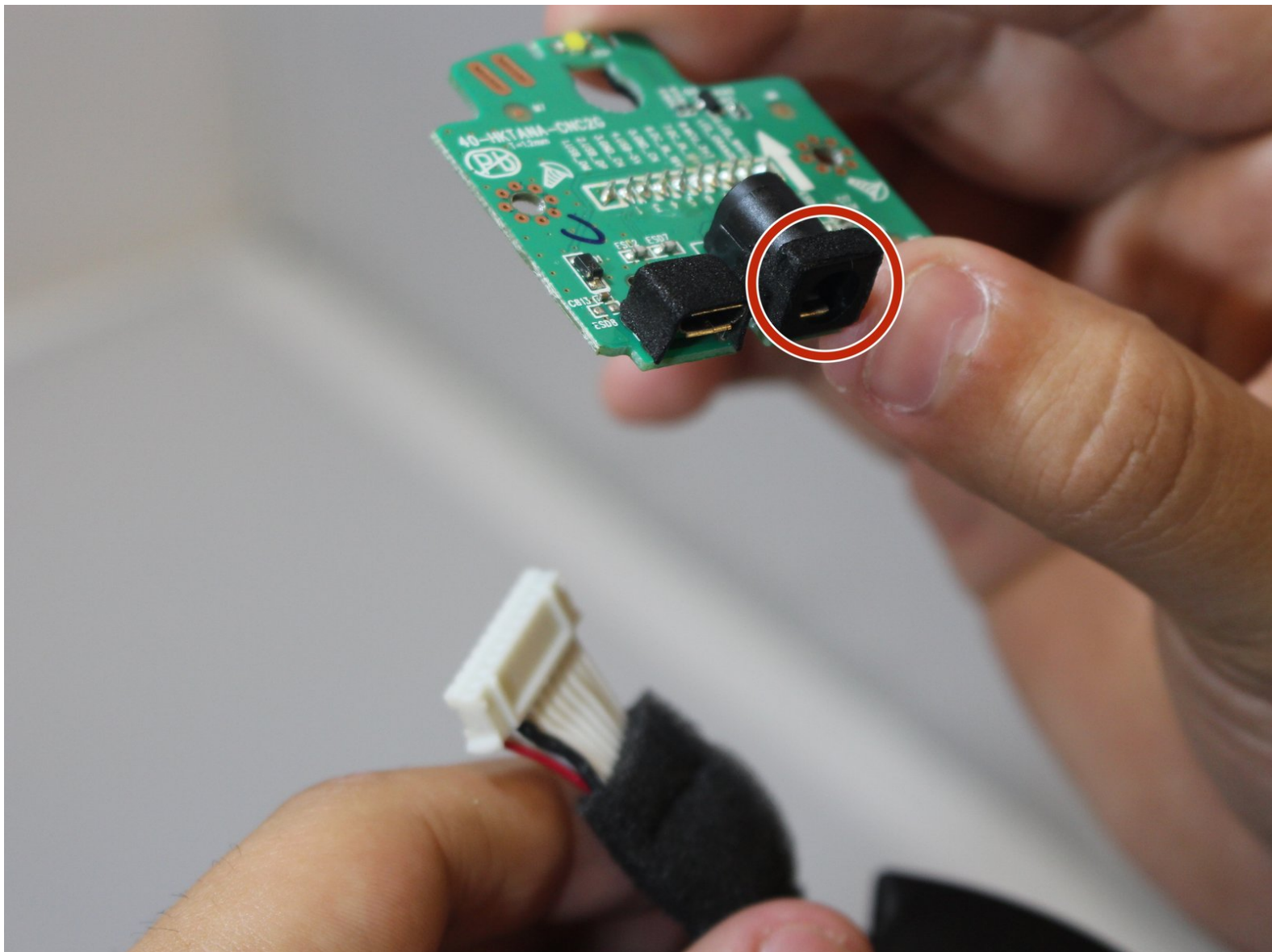




# Harman Kardon Invoke Power Port Replacement

If your Harman Kardon Invoke is experiencing problems with powering on after being plugged in, there could be an issue with a weak or broken power port.

Written By: Angel A. Grageda



## INTRODUCTION

This guide will help you to replace the power port of Harman Kardon Invoke. You may replace the power port if you faced a weak port that will affect the efficiency of the Invoke or a broken/old port that prevents the invoke from connecting to power. By replacing the power port, the Invoke should be connecting to the power perfectly.



### TOOLS:

- [T10 Torx Screwdriver](#) (1)
  - [Metal Spudger](#) (1)
-

## Step 1 — Power Port



- Use a metal spudger to remove the rubber base.

## Step 2



- Use a T10 Torx screwdriver to remove the four 14 mm screws.

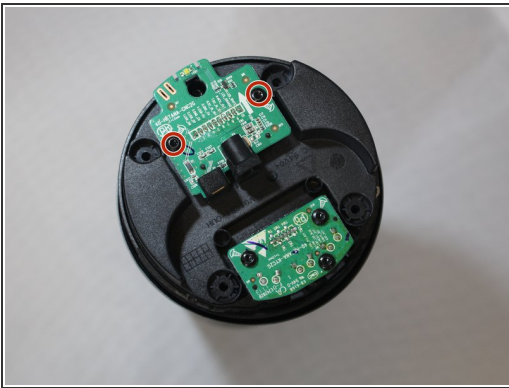


### Step 3



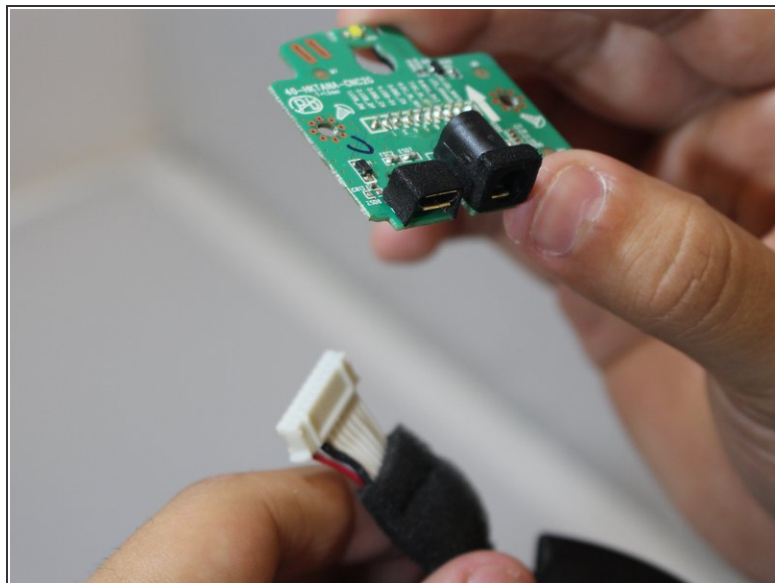
- Grip the bottom firmly and wiggle upwards to remove it.

### Step 4



- Use a T10 Torx screwdriver to remove two 10 mm screws from the board that is attached to the ports.
- Pull the board up lightly.

## Step 5



- Pull the cable to disconnect the board from the device.
- ⓘ To replacement the service port, you will have to replace the whole board that the port is attached to.

To reassemble your device, follow these instructions in reverse order.