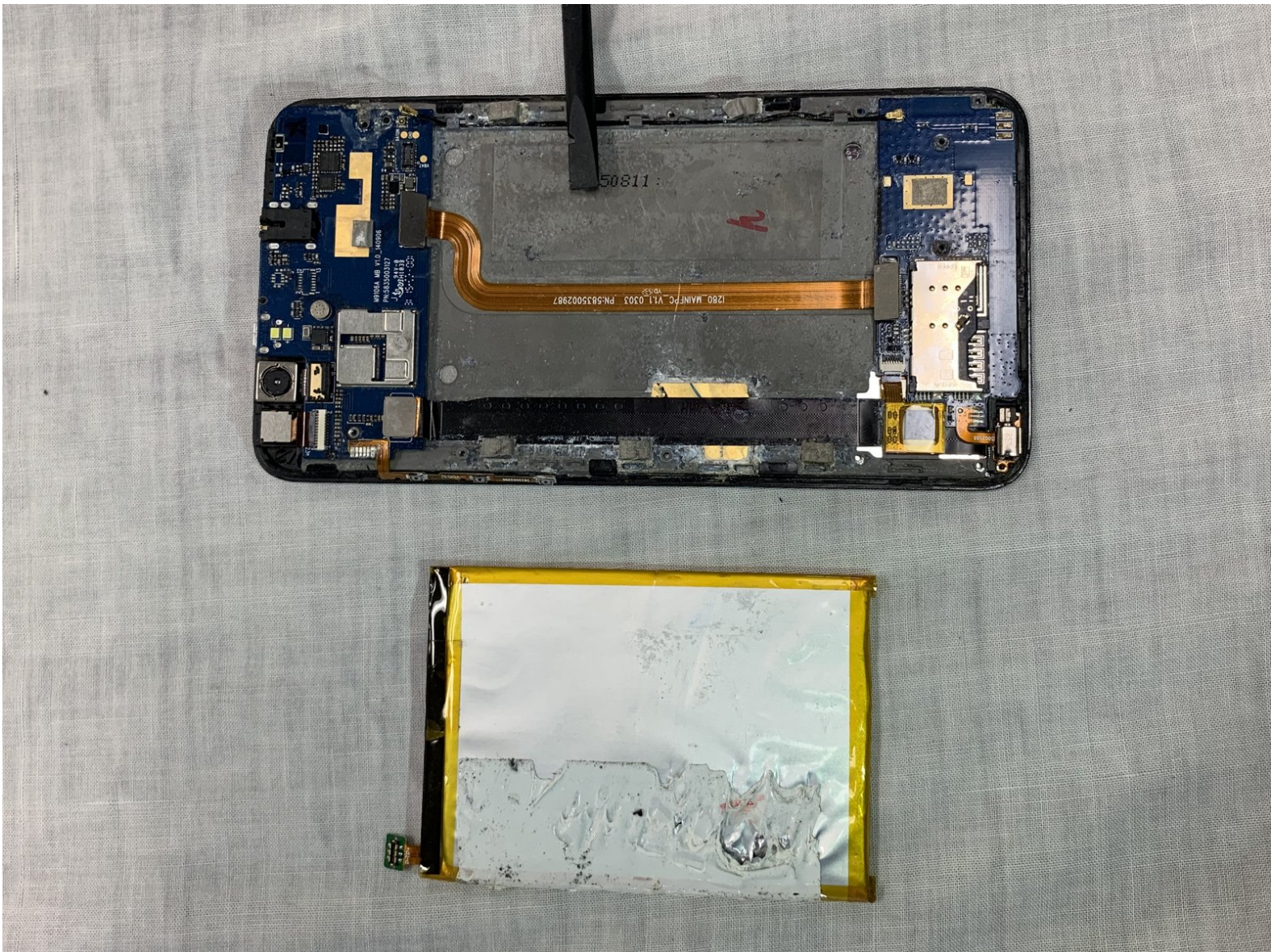




Sky 6.0Q Battery Replacement

How to replace the battery of the Sky 6.0Q.

Written By: Monica Difato



INTRODUCTION

If the device is having poor battery performance, consider replacing the battery of the Sky 6.0Q phone. The battery of the device only has a set performance life, and is more cost effective to replace than purchasing a completely new phone. The design of the Sky 6.0Q phone makes accessing the battery difficult, so it is necessary to be careful when removing the back plates and to not lose the small screws. It is recommended to use a magnetic work board to keep the screws from rolling away and are always on hand once the battery is replaced. Also, the battery itself is thin, so make sure to not tear or puncture it during removal. Lithium is toxic, so leaking of this on the phone or user can be dangerous.



TOOLS:

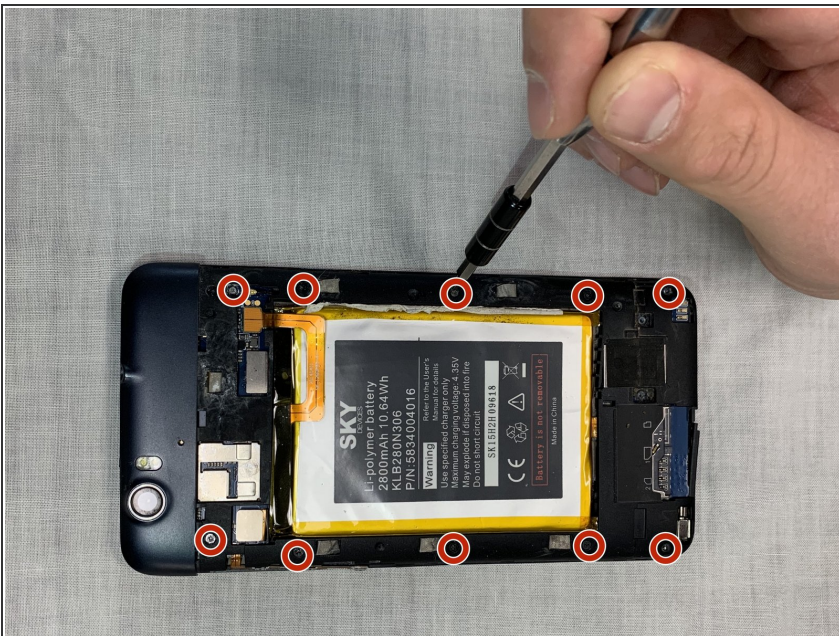
- [Phillips #00 Screwdriver](#) (1)
 - [Spudger](#) (1)
 - [Magnetic Project Mat](#) (1)
 - [iFixit Opening Tools](#) (1)
-

Step 1 — Battery



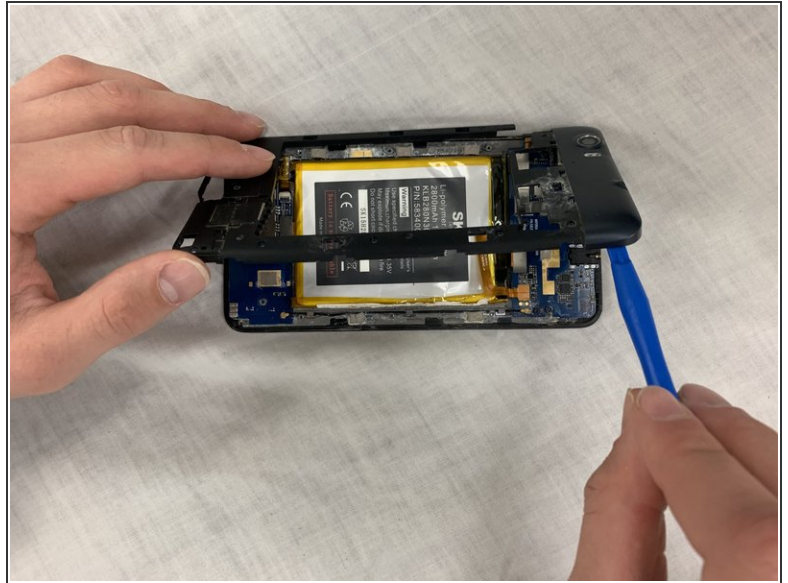
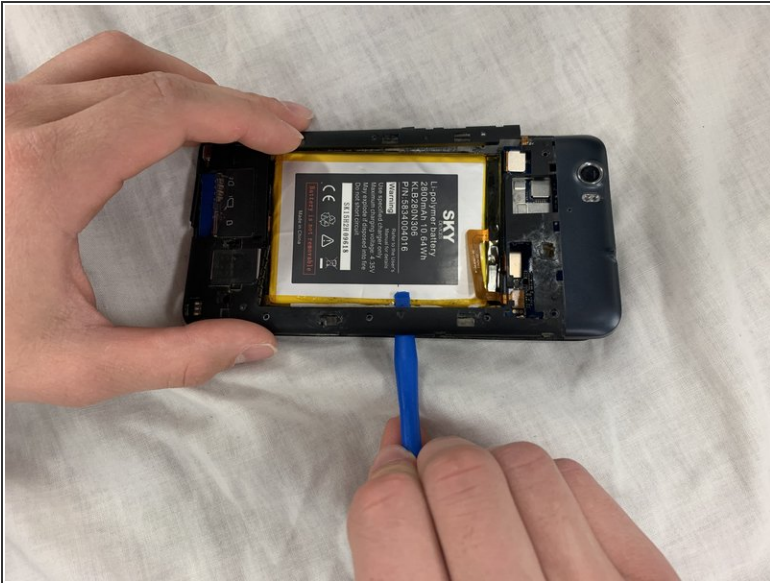
- Use the #00 Phillips screwdriver to remove the two 3 mm screws at the bottom of the backplate.
- Pry off the back plate with the spudger.

Step 2



- After removing back panel, remove all ten 3mm screws with the #00 Phillips screwdriver from the black plastic casing so it can be removed.

Step 3



- Use the plastic opening tool to help pry up the plastic backing.
- Once loose, remove the plastic backing to expose underlying electronic components.

Step 4



- Disconnect the gold cord extending from the battery to the top electronic board.
- Use the nylon spudger to help pry up the battery attachment.
- ☑ To reattach the gold cord and battery attachment connection, gently press piece back in place.

Step 5



- Use the nylon spudger to get underneath the battery and separate it from the phone back.
- ⚠ There is a white, milky adhesive so be careful to not rip or puncture the battery during removal.

Step 6



- Once separated, remove battery and replace with a new battery.

To reassemble your device, follow these instructions in reverse order.