



Capresso Infinity Power Cord Replacement

How to replace a Capresso Infinity power cord.

Written By: Elizabeth Roach



INTRODUCTION

Does your Capresso Infinity Coffee Grinder not turn on? Has the power cord started to fray? If so, there might be an issue with your power cord. Here is a guide to replace your Capresso Infinity power cord. All you need is a Torx Security T10 Bit Screwdriver and a 2.0 Flathead Screwdriver in order to remove the screws to replace the power cord.



TOOLS:

- [T10 Torx Security Bit Screwdriver](#) (1)
- [Flathead Screwdriver](#) (1)

Step 1 — Metal Outside Casing



- Twist the top plastic container to the left counterclockwise.
- Pull upwards to remove.

Step 2



- Twist the top burr to the left counter clockwise.
- Pull upwards to remove.

Step 3



- Flip entire device upside down.
- Remove two rubber coverings on the back of the device.

Step 4



- Remove four 11.59mm T10 screws.
- ⓘ The screws will have small circular washers under them. Put them aside for reassembly.

Step 5



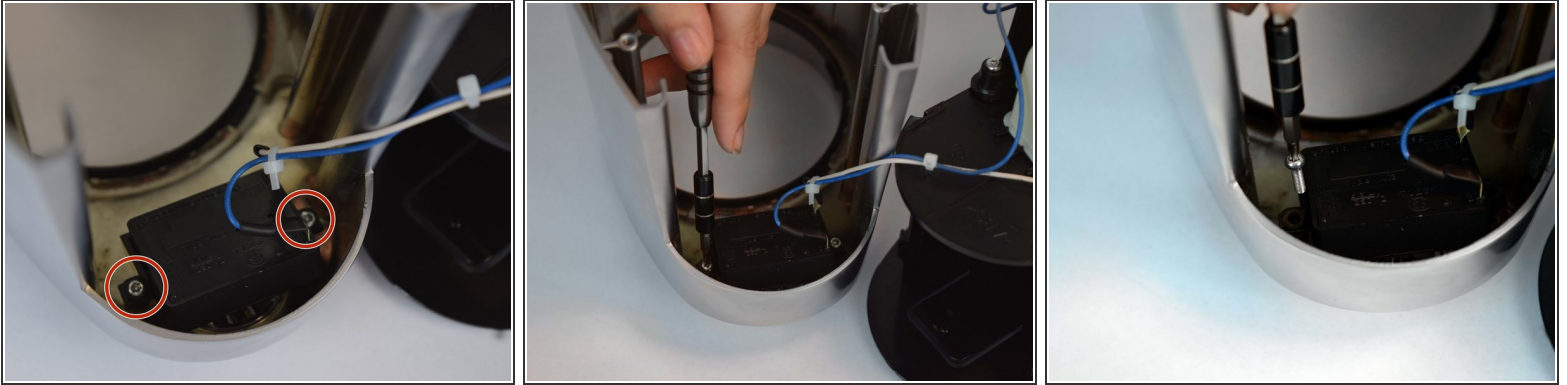
- Lift the metal outside casing off the black base.
- Flip the outside casing forward so you have access to the inside of it.

Step 6



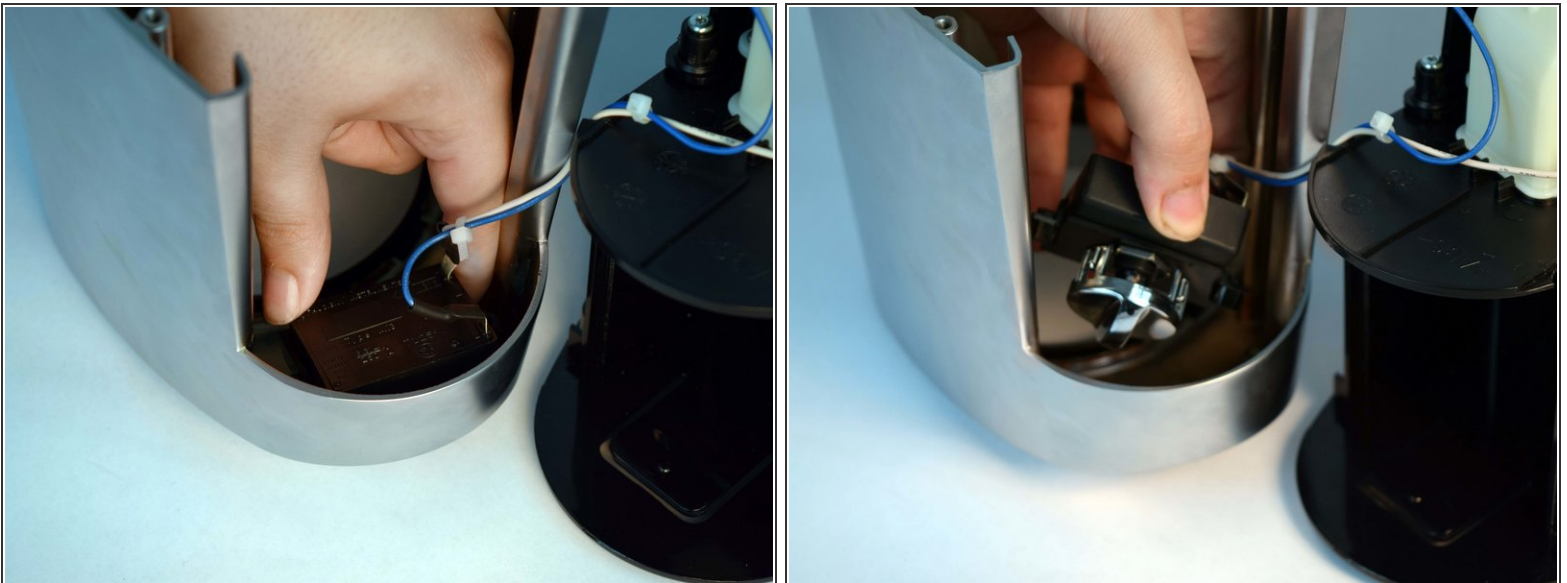
- Remove one 11.59mm T10 screw.
- Let the green wire fall, or place somewhere so it doesn't get in the way.
- ⓘ There will be a small metal retainer and washer, put them aside for reassembly.

Step 7



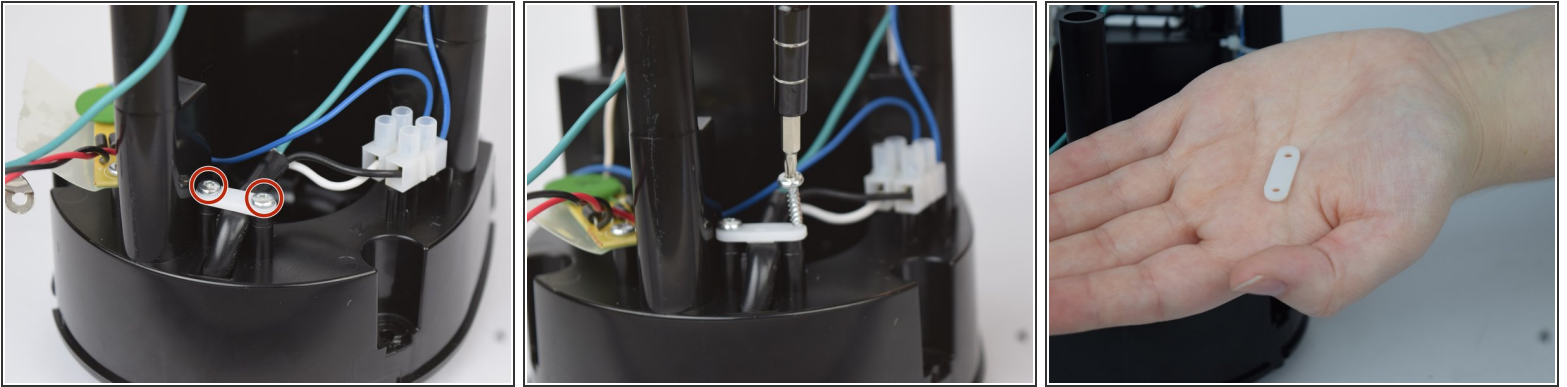
- Remove two 11.59mm T10 screws.

Step 8



- Remove the time/on switch by pulling upwards.

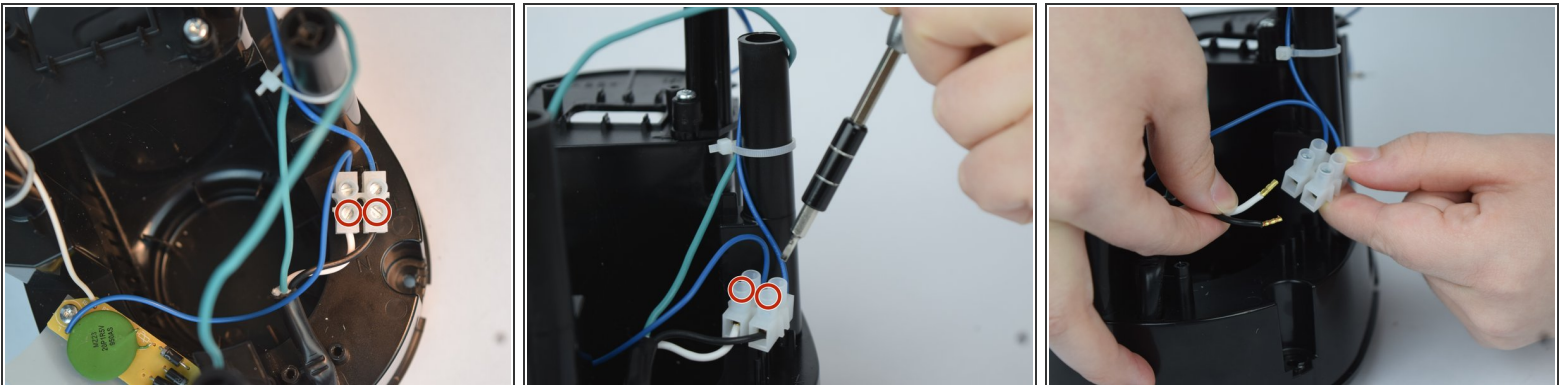
Step 9 — Power Cord



- Remove two 13.60mm T10 screws.

i A white, flat plastic piece will have come loose. Place this to the side for reassembly.

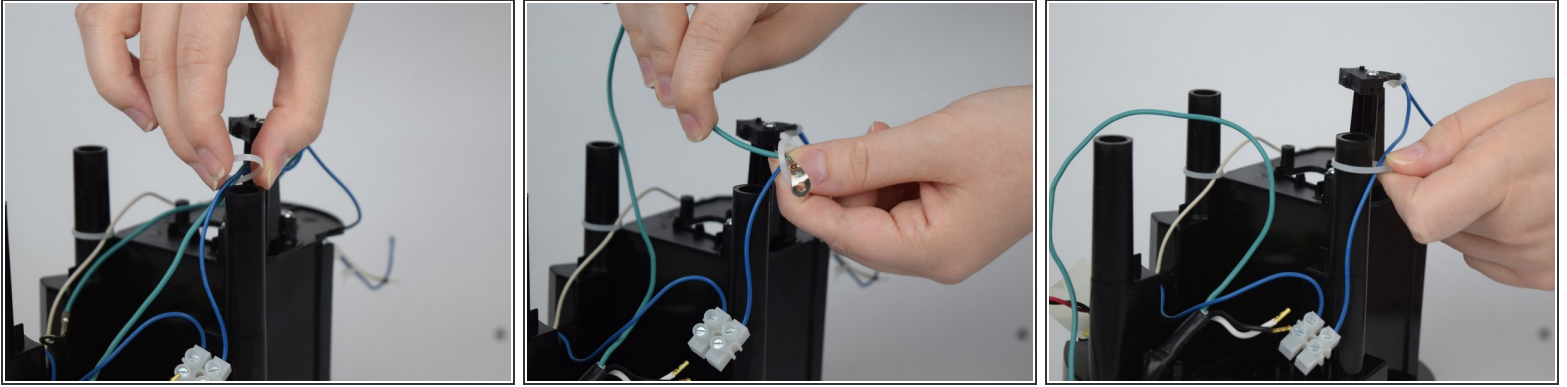
Step 10



- Using a Flathead screwdriver loosen the two screws connecting the white and black wire to the plastic box.

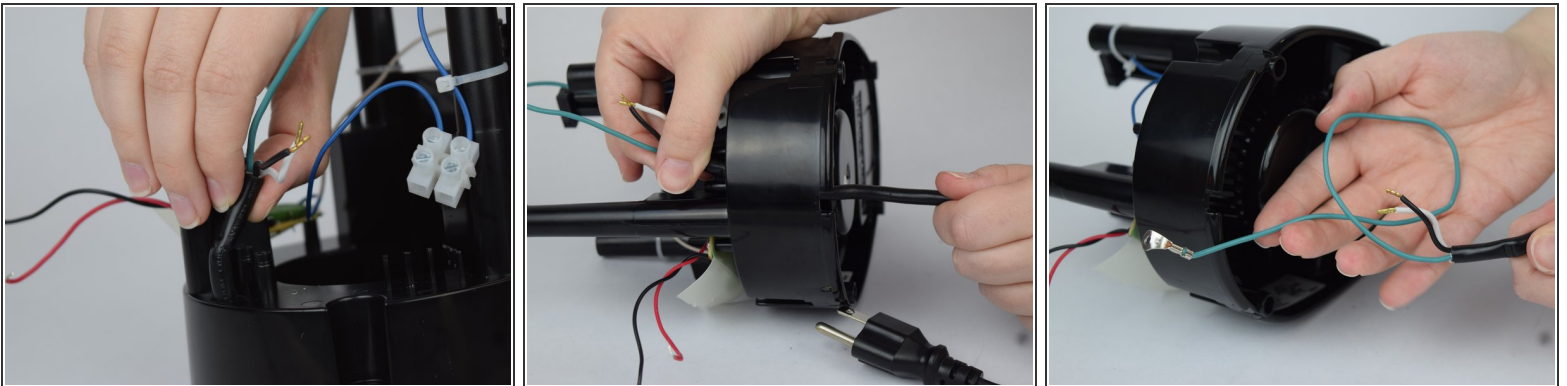
i Do not remove the screws from the box, but loosen them enough to disconnect the black and white wire.

Step 11



- Originally attached to the inside of the outer casing, the green wire needs to be fed through the zip tie which keeps it in place.
- Lift up on the zip tie far enough to create a space to feed the green wire through.
- Place the zip tie back around the column that you lifted it from.
- All three wires that comprise the power cord should be detached from the coffee grinder.

Step 12



- Feed the wires through the small hole at the bottom of the coffee grinder where the external power cord is located.
- Once the power cord is free of the coffee grinder, you are able to put in the new cord.

To reassemble your device, follow these instructions in reverse order.

