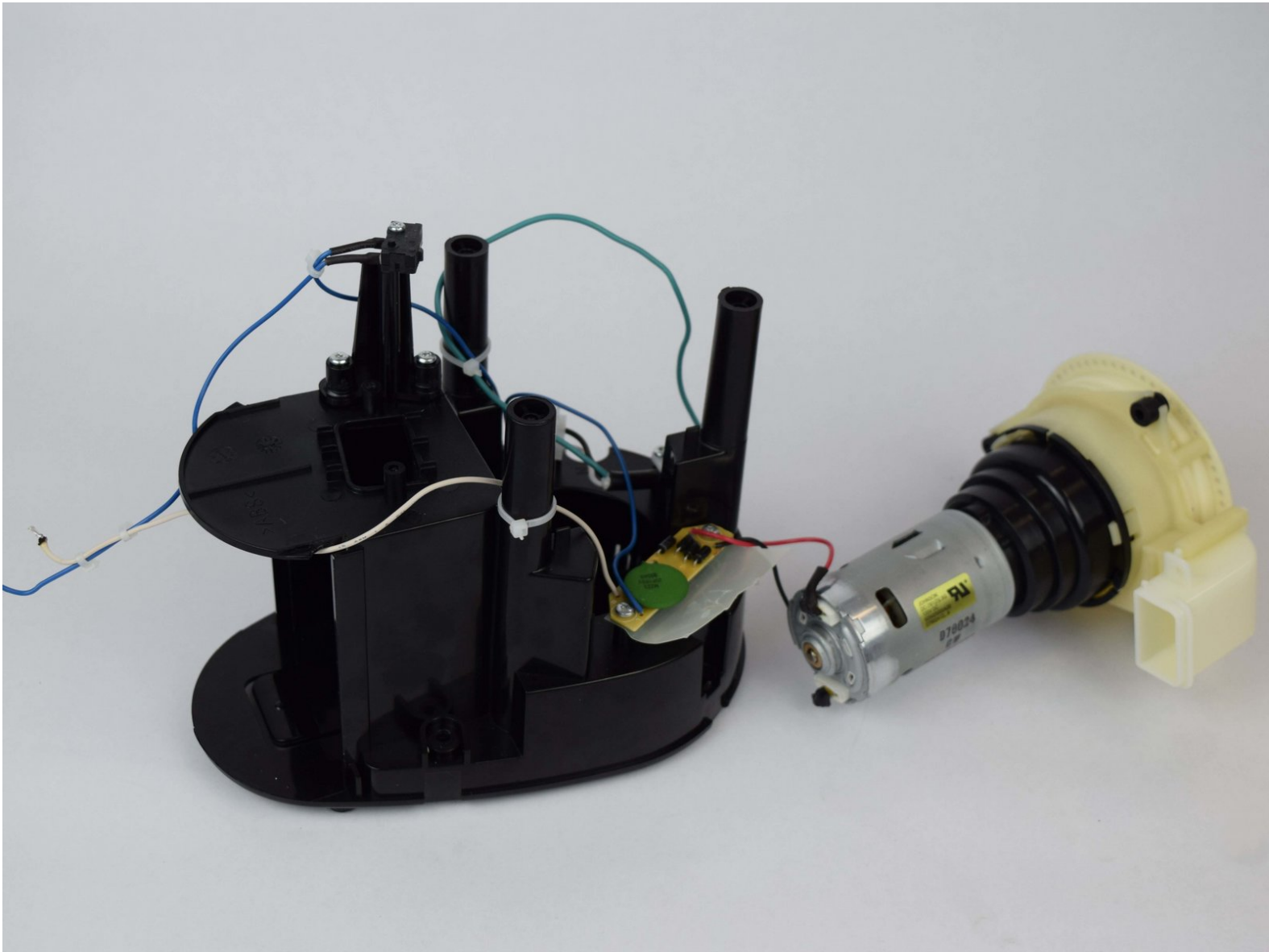




Capresso Infinity Motor Replacement

This guide provides the steps needed to replace the motor in the Capresso Infinity Grinder.

Written By: Mayson Dunnigan



INTRODUCTION

Is your Capresso Infinity not grinding your coffee even though it's plugged in? Is the Grinder making odd noises, or seems like its not turning as fast as it should? If so here is the guide to fix the problem by replacing the motor. All you need is a Torx Security T10 Bit, Spudger, Opening Tool, and Soldering Iron.



TOOLS:

- [T20 Torx Screwdriver Bit](#) (1)
- [T10 Torx Security Bit Screwdriver](#) (1)
- [Spudger](#) (1)
- [iFixit Opening Tool](#) (1)
- [Soldering Workstation](#) (1)
- [Metal Spudger](#) (1)

Step 1 — Metal Outside Casing



- Twist the top plastic container to the left counterclockwise.
- Pull upwards to remove.

Step 2



- Twist the top burr to the left counter clockwise.
- Pull upwards to remove.

Step 3



- Flip entire device upside down.
- Remove two rubber coverings on the back of the device.

Step 4



- Remove four 11.59mm T10 screws.
- ⓘ The screws will have small circular washers under them. Put them aside for reassembly.

Step 5



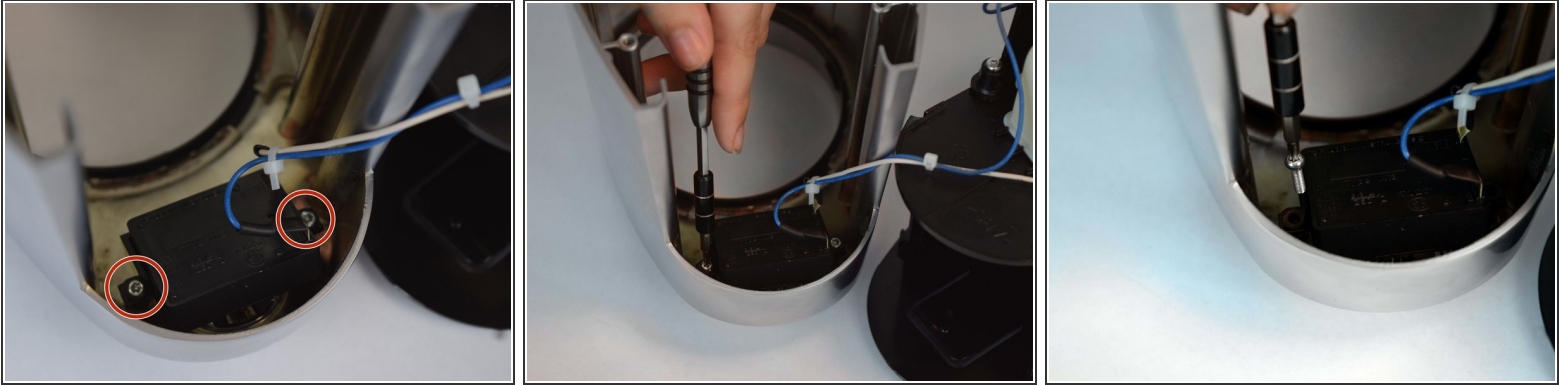
- Lift the metal outside casing off the black base.
- Flip the outside casing forward so you have access to the inside of it.

Step 6



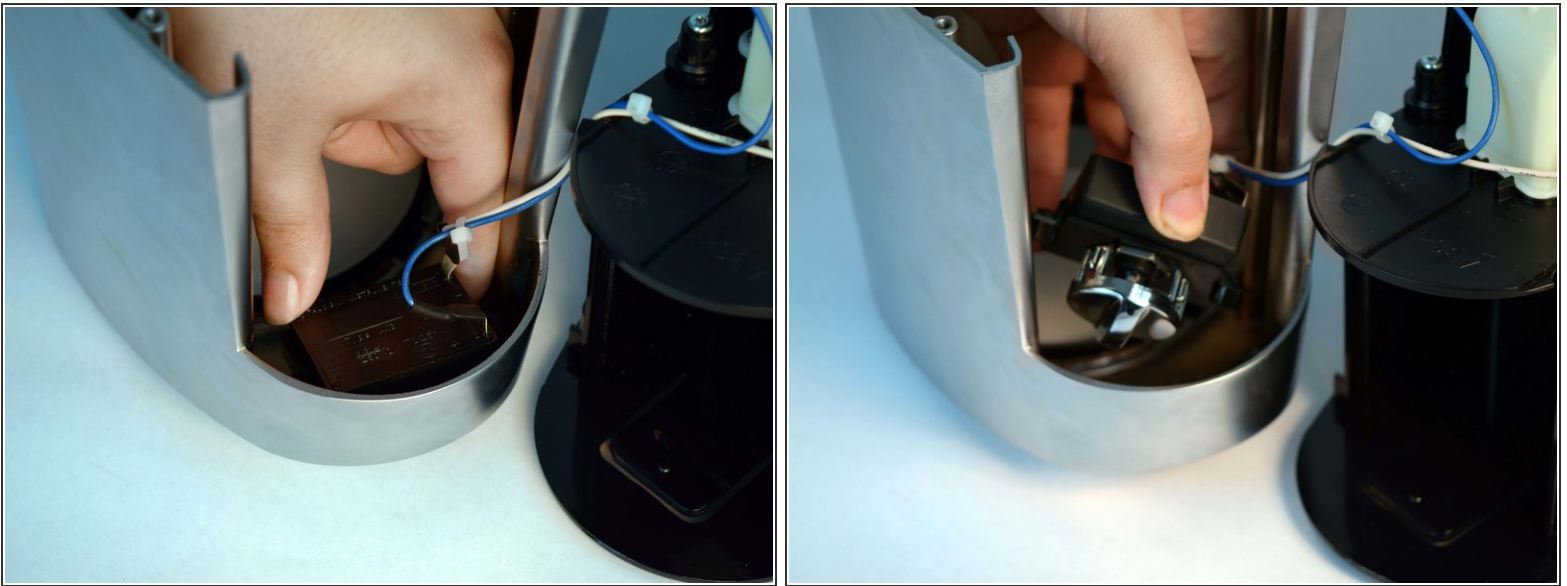
- Remove one 11.59mm T10 screw.
- Let the green wire fall, or place somewhere so it doesn't get in the way.
- ⓘ There will be a small metal retainer and washer, put them aside for reassembly.

Step 7



- Remove two 11.59mm T10 screws.

Step 8



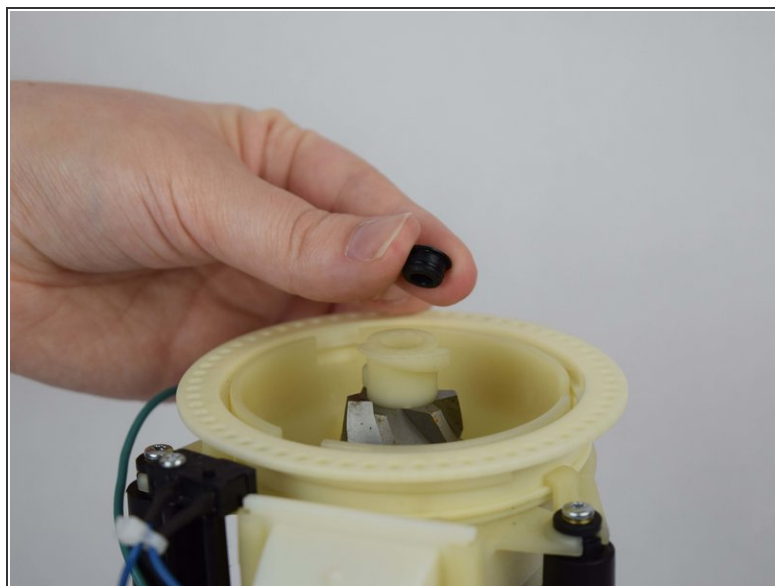
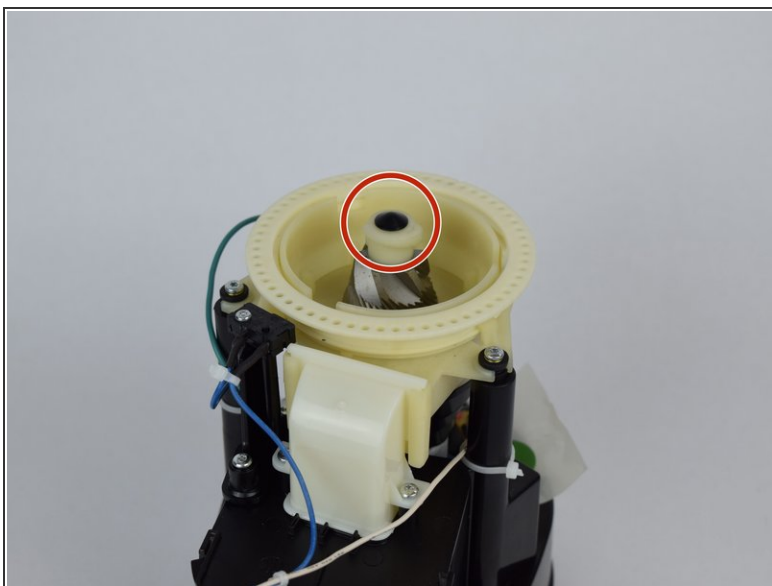
- Remove the time/on switch by pulling upwards.

Step 9 — Bottom Conical Burr



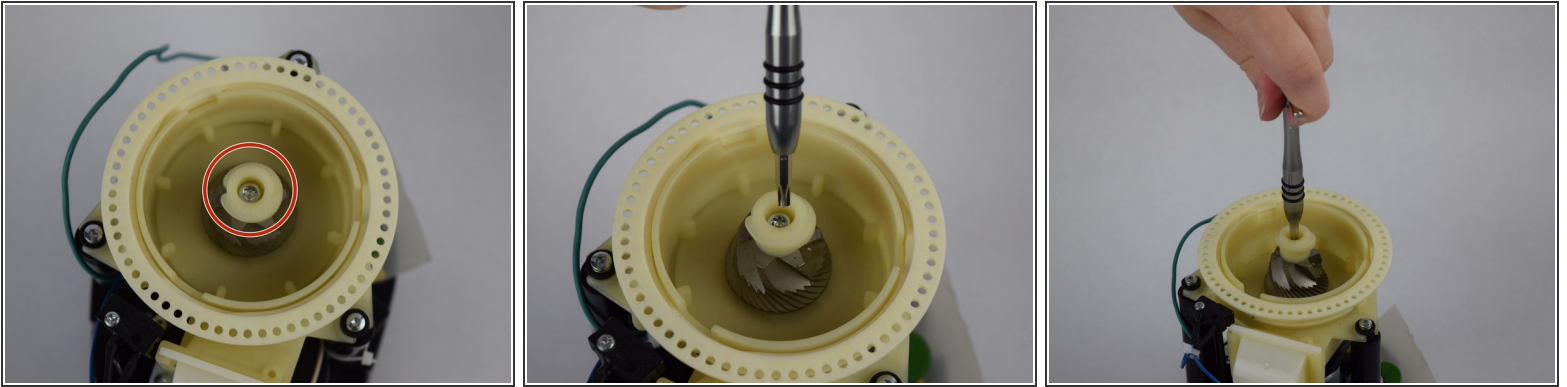
- Grab the edge of the plastic black ring that sits on top of the device and gently pull up to release.

Step 10



- Remove the black rubber knob atop the bottom burr by gently pulling up.

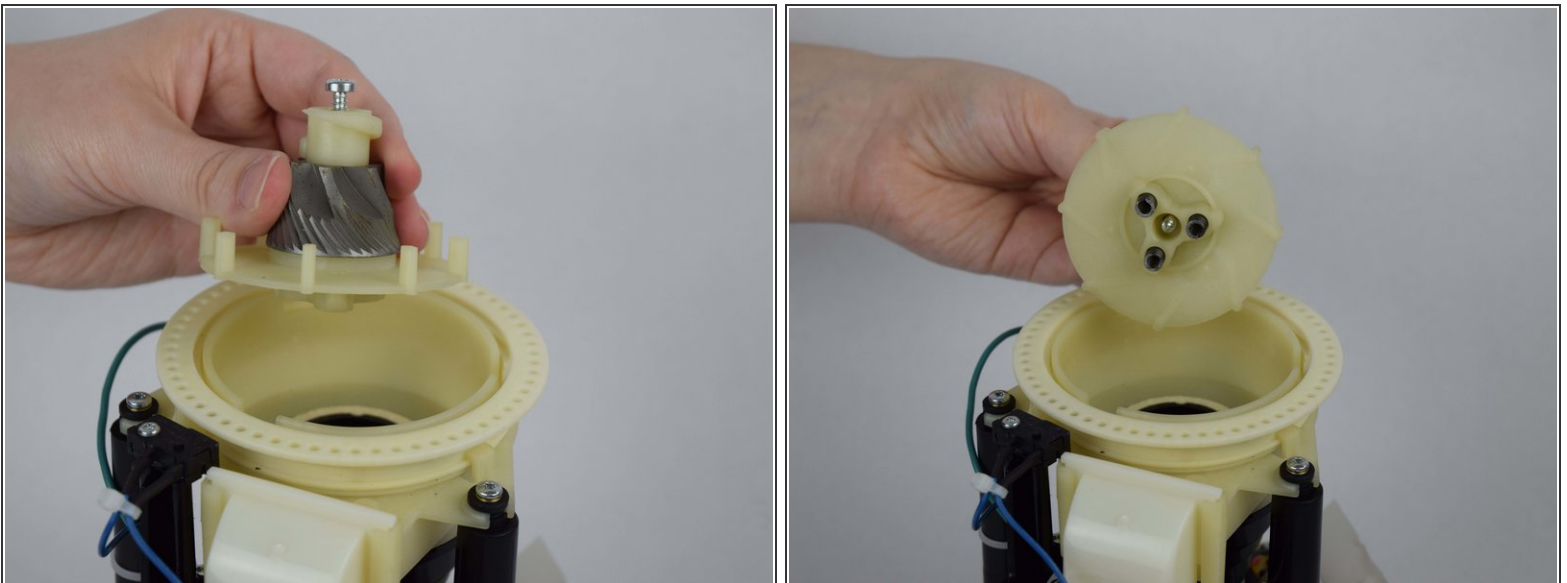
Step 11



- Partially remove one 47.20mm T20 screw.

i The screw does not need to come out completely, it just needs to be loose enough pull the burr out of the device.

Step 12



- Remove the bottom burr piece by pulling upwards.

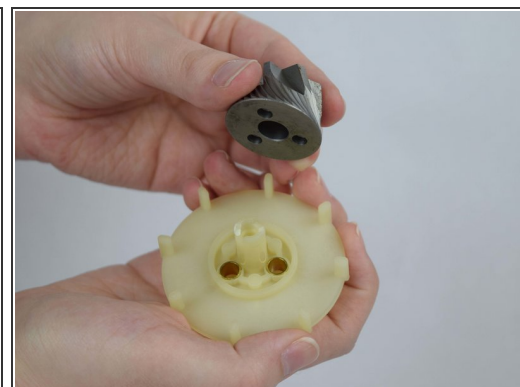
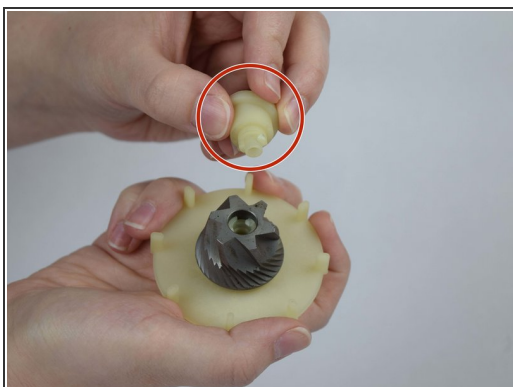
i There will be 3 springs and 3 metal balls under the springs, located underneath the burr. Put them aside for reassembly.

Step 13



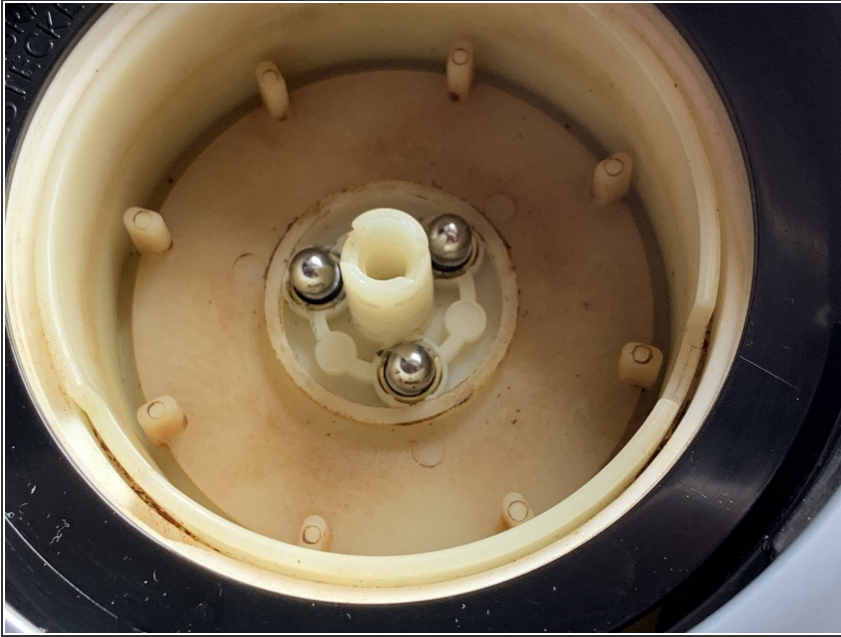
- Remove the loosened screw by pulling it upwards.

Step 14



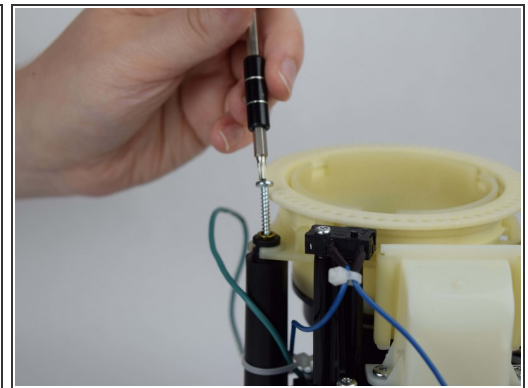
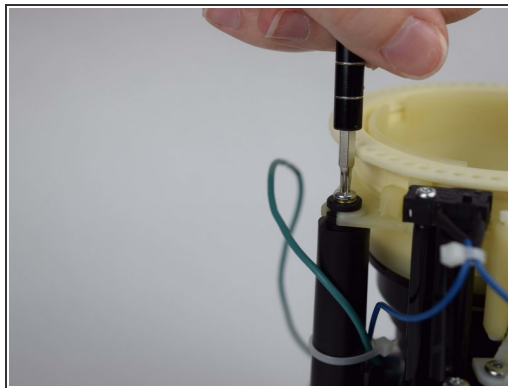
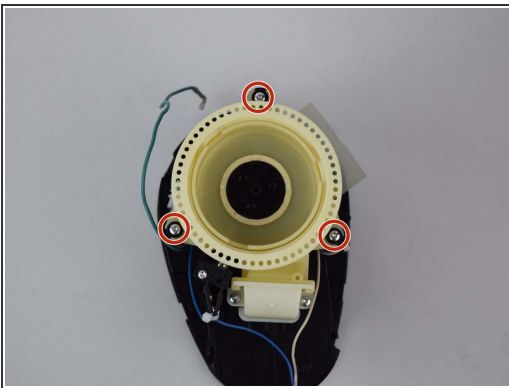
- Grip the plastic piece at the top of the conical burr and pull upwards to remove.
- Grip the metal burr, and pull upwards to slide it off the plastic base.

Step 15 — Spring and Bearing Positions



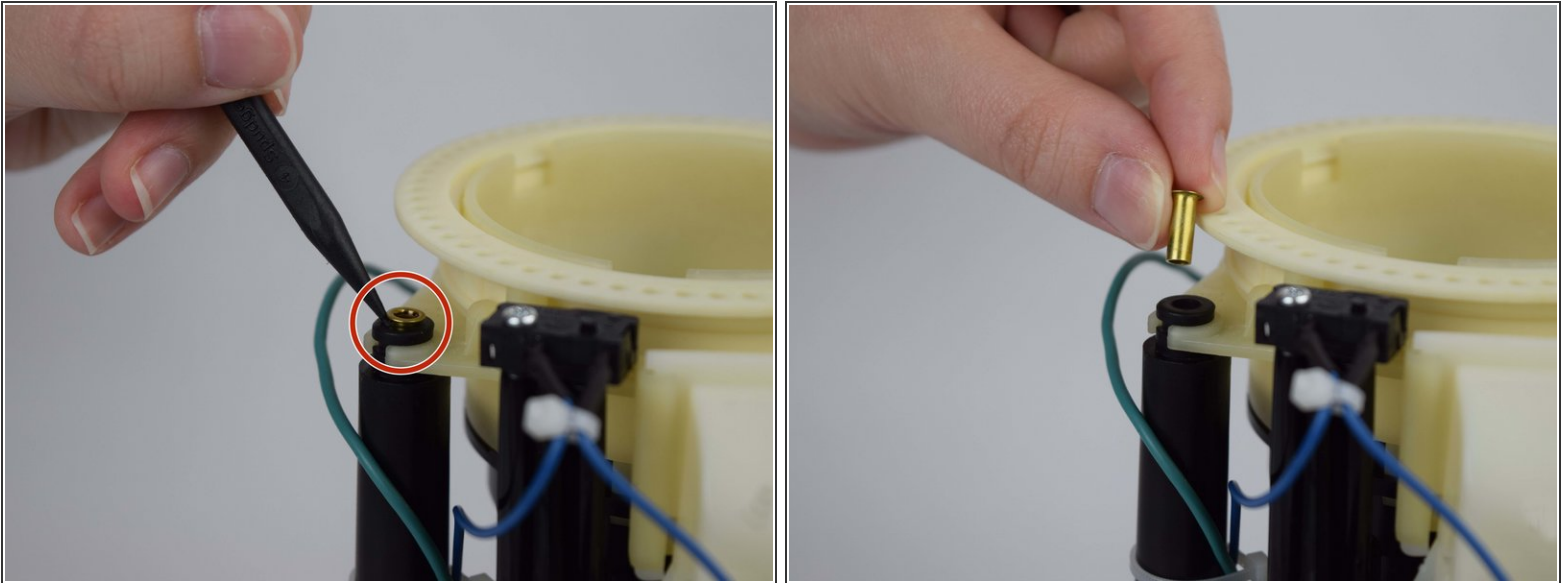
- This is the correct position of bearings and springs when the screw and bottom burr are removed.

Step 16 — Motor



- Remove the three 19.61 mm T10 screws surrounding the white plastic burr housing.

Step 17



- Pry up the gold colored screw castings for each hole using a spudger.
- Remove all three gold castings and set them aside for reassembly.

Step 18



- Remove the two 13.60 mm T10 screws holding the bean chute to the base.

Step 19



- Pull the white plastic burr housing and motor up and out of the base.
- Place the motor and white plastic burr housing aside for future soldering.

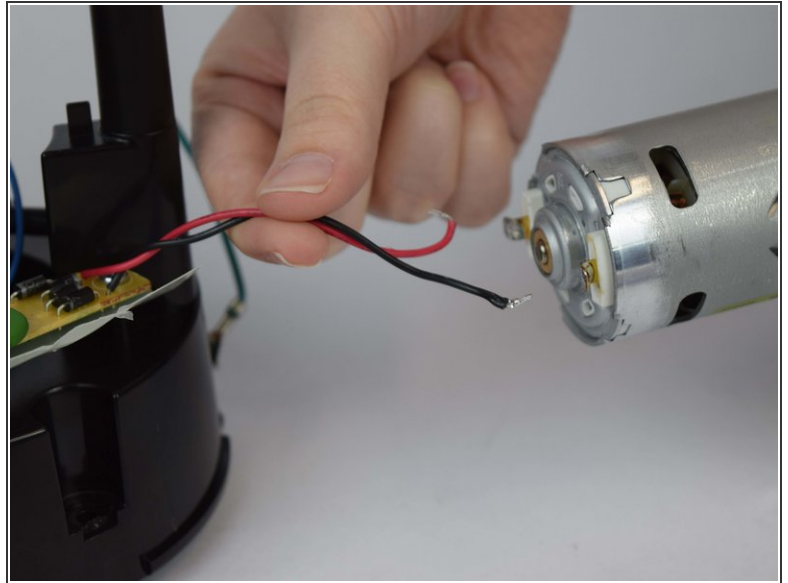
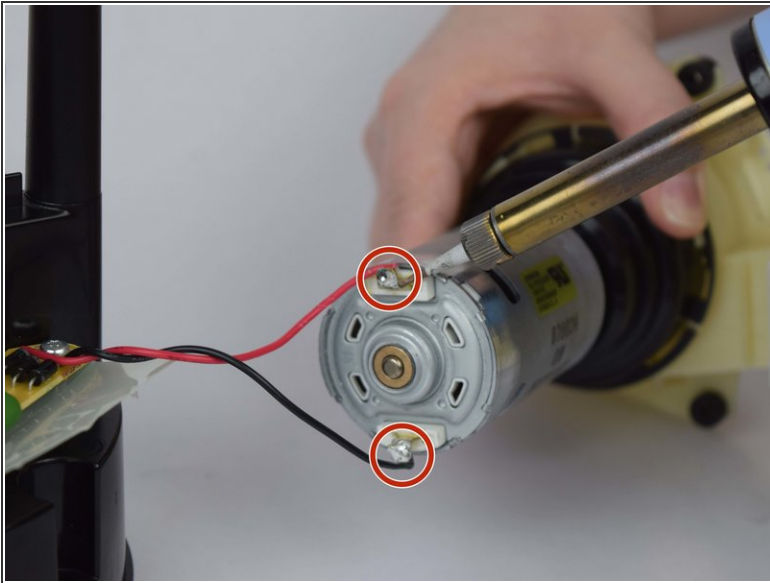
Step 20



⚠ Be careful when you are using the metal spudger in this step because it can cause harm if used incorrectly.

- Remove rubber wraps covering both wires solder points using a metal spudger.

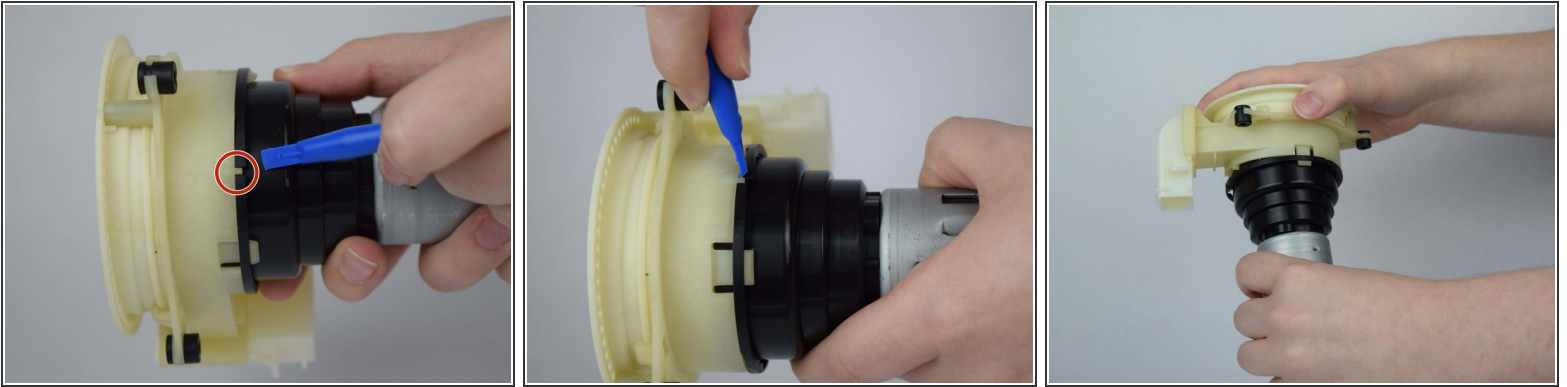
Step 21



⚠ This step requires soldering. Be careful and make sure you understand this tool and its dangers before using it.

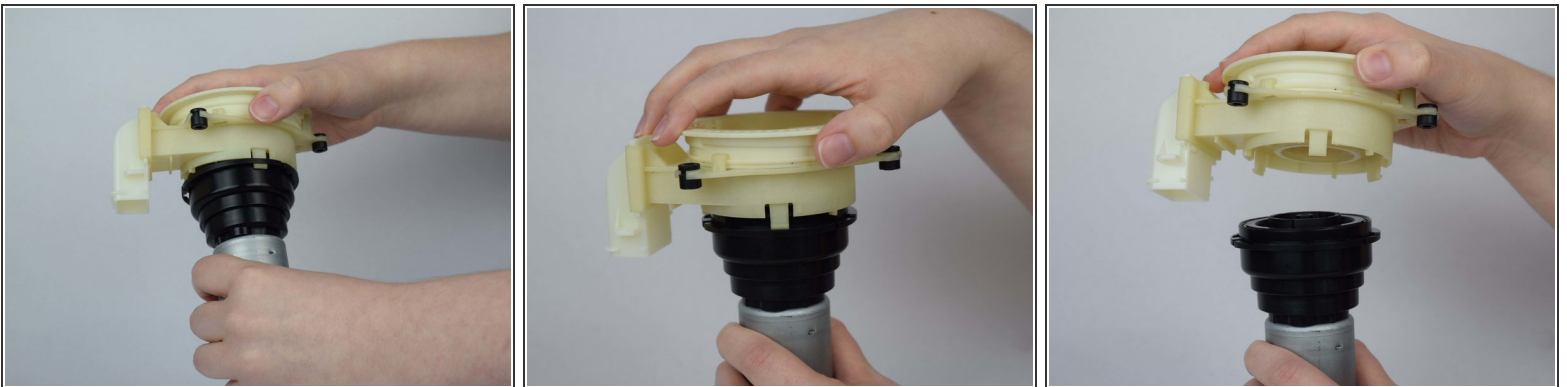
- Remove the two wires from the motor by unsoldering them.
- Place the base aside to continue working on the motor.

Step 22



- Locate the three knobs preventing the white plastic burr housing from being removed from the motor. They are all along the seam.
- Pry the seam between the two pieces down enough to allow each knob to slide counterclockwise with an opening tool.
- Twist the white plastic burr housing as far counterclockwise as you can.

Step 23



- Lift up the white plastic burr housing and separate it from the motor.
- i** The black plastic piece is attached to the motor. You need to remove the motor with it for replacement.

To reassemble your device, follow these instructions in reverse order.