



D-Link DCS-825L Antenna Replacement

This is a step by step guide on how to replace the antenna for a D-Link DCS-825L.

Written By: Alexis Clopton



INTRODUCTION

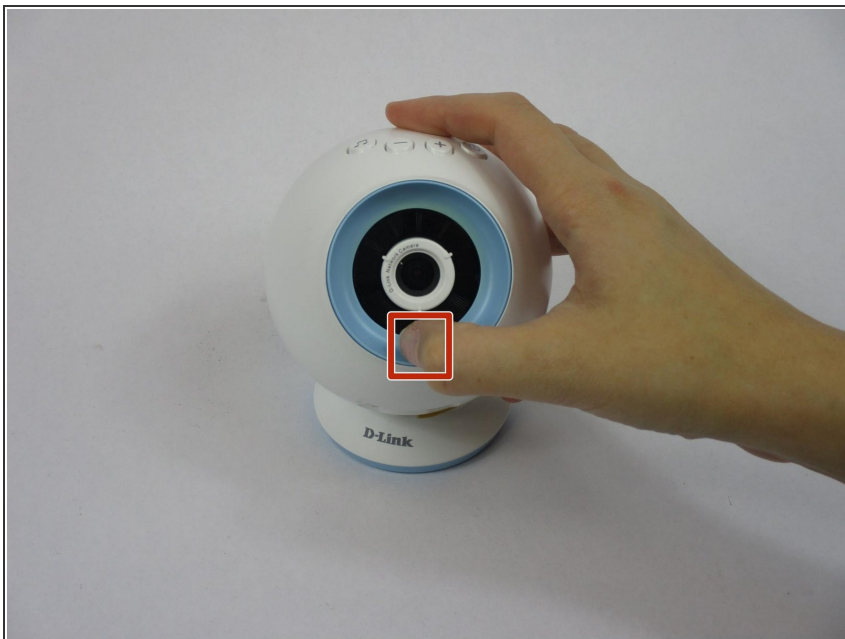
There are times that the antenna of the Wi-Fi Baby Camera does not work. This is a step by step guide on how to remove a faulty antenna from the Wi-Fi Baby Camera and replacing it with a working antenna.



TOOLS:

- [Phillips #2 Screwdriver](#) (1)
 - [ESD Safe Tweezers Blunt Nose](#) (1)
-

Step 1 — Accent Ring



- Grasp the side of the accent ring. There is a notch that your thumb will be able to grab ahold of.

Step 2



- Twist the accent ring until it pops off. You may need to use both hands if the accent ring is stuck.

Step 3



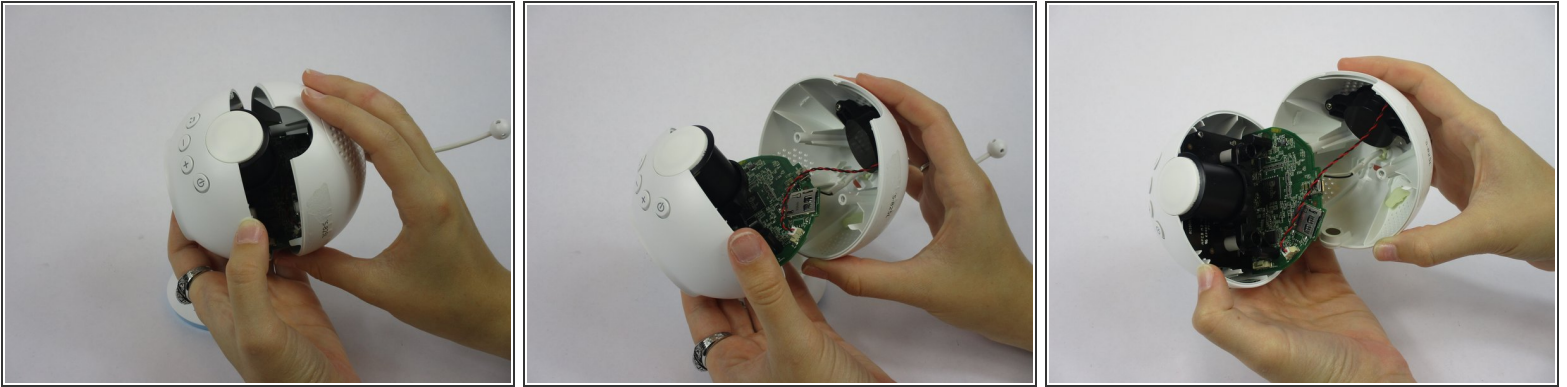
- Replace your accent ring with whichever color you choose.

Step 4 — Back Casing




- Remove one Phillips #2 screw from each side of the camera lens.

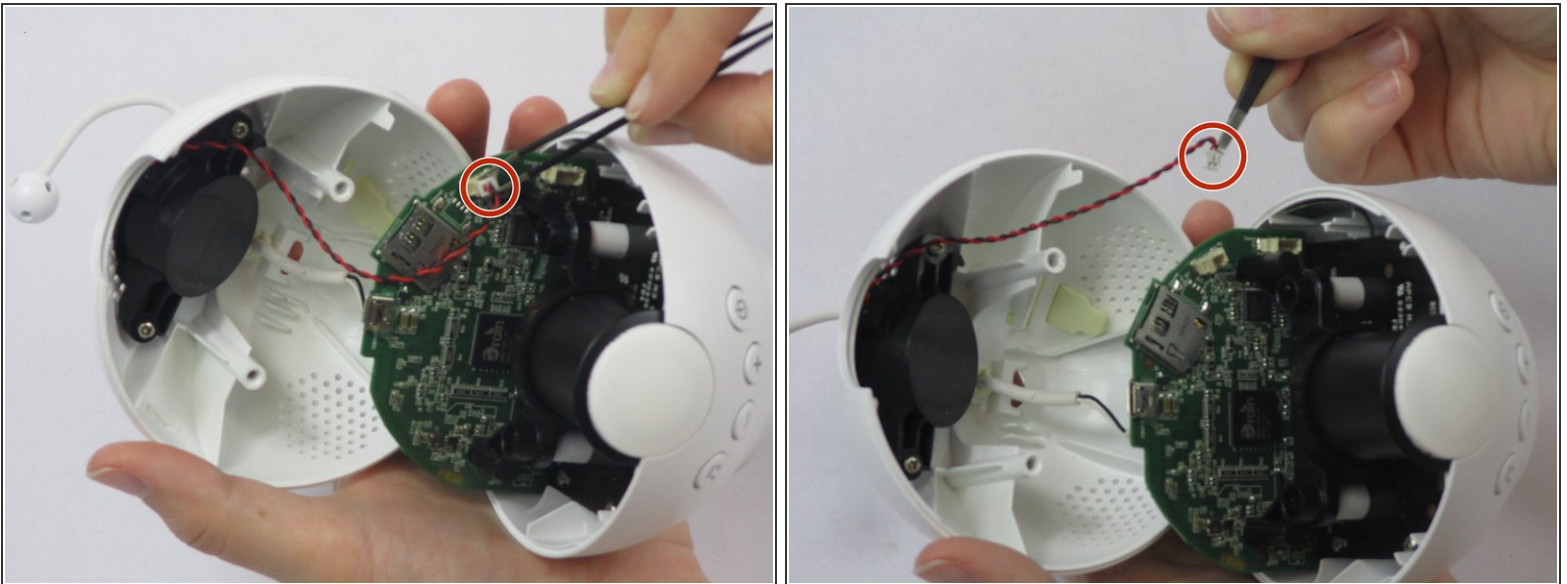
Step 5



- Pull the Wi-Fi Baby Camera open.

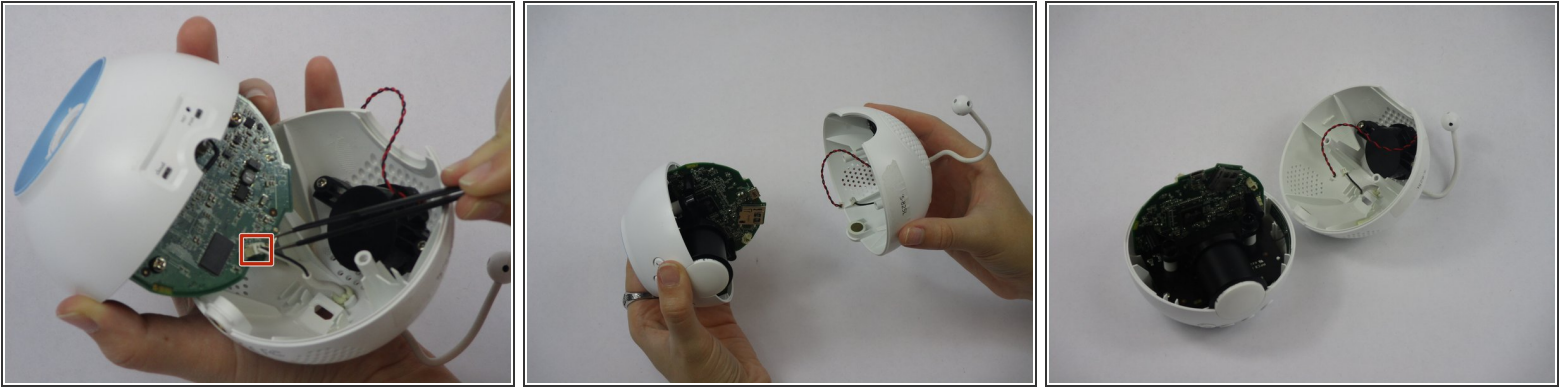
 It should be easily done after the screws are removed.

Step 6



- Take your tweezers and gently pull the white tip out from its plug that is connected to a red and black twisted wire.

Step 7



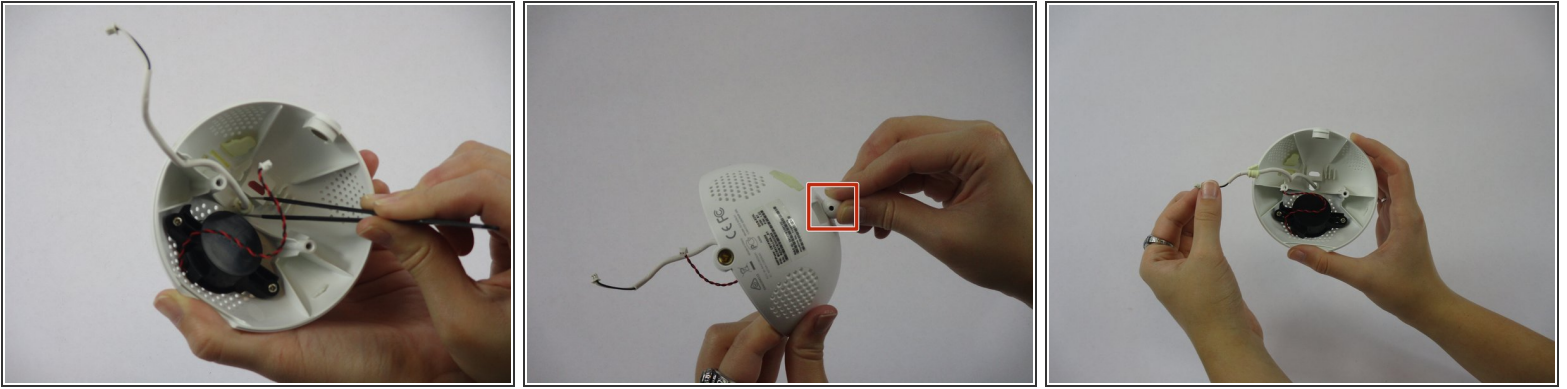
- Take your tweezers and gently pull the white tip that is on the end of the white wire (the antenna) out from its plug in.

Step 8 — Antenna



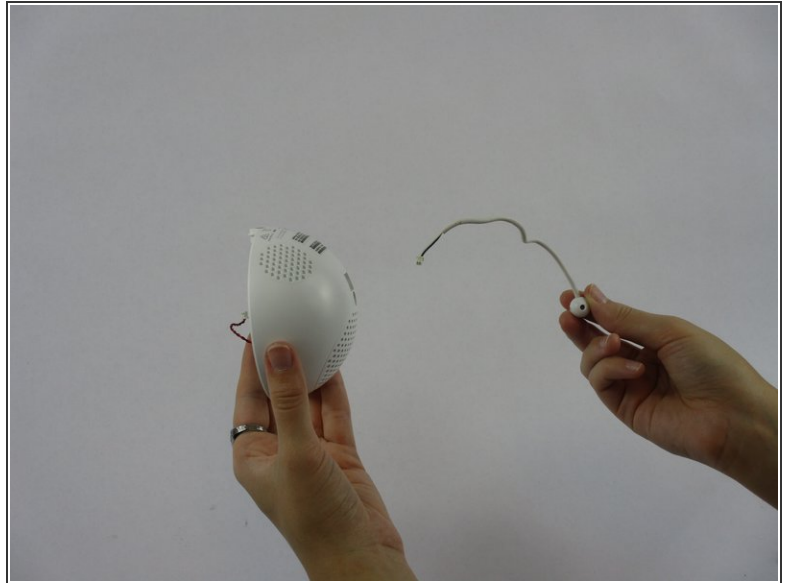
- ⓘ Once you have the back casing removed from the other half of the device, it should look like this with the antenna poking out.

Step 9



- There will be a light yellow rubber stopper that is holding the antenna in place.
 - With your tweezers, gently tug on the stopper to make it come out, or at least come loose.
 - If the stopper does not completely come out, use the round top of the antenna to push down on it.
- i** You can do this simply by pulling the antenna as close to the back casing as possible, and then pushing down on it until the rubber stopper comes out completely.
- i** After it has come out, it can either be taken off from the antenna and set aside, or it can be kept on.

Step 10



- Once the rubber stopper has been pushed out, you will now be able to easily pull the antenna out from the back casing.
- ☑ After it has been removed, you are now able to replace the antenna of your Wi-Fi Baby Camera.

To reassemble your device, follow these instructions in reverse order.