



Lenovo IdeaPad Flex 4-1470 Wifi Card Replacement

Replace the Wifi card in your Lenovo IdeaPad Flex 4-1470.

Written By: Elijah Ellis



INTRODUCTION

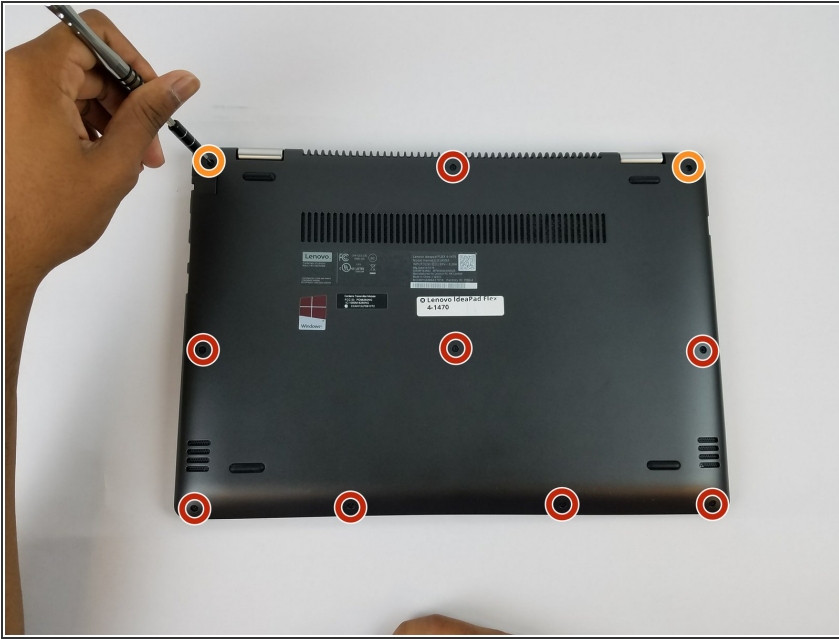
The wifi card allows for the laptop to connect to the internet via wireless connection. It can be removed with reasonable ease and is important for any usage of the laptop requiring online access.



TOOLS:

- [Phillips #0 Screwdriver](#) (1)
 - [iFixit Opening Tools](#) (1)
-

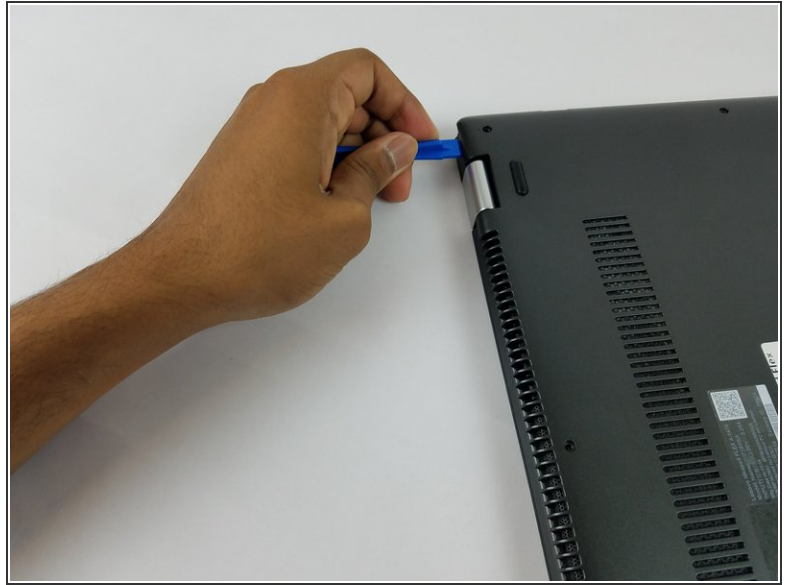
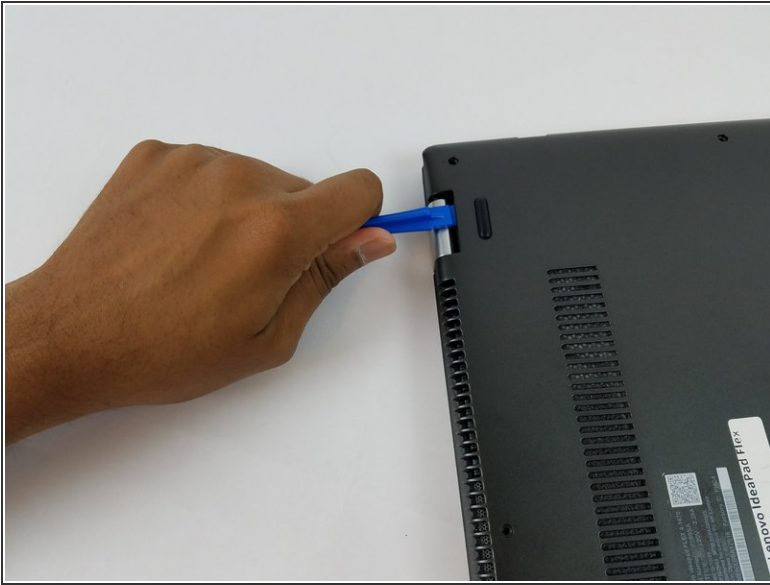
Step 1 — Lower Case



⚠ Ensure your computer is completely OFF before starting this guide.

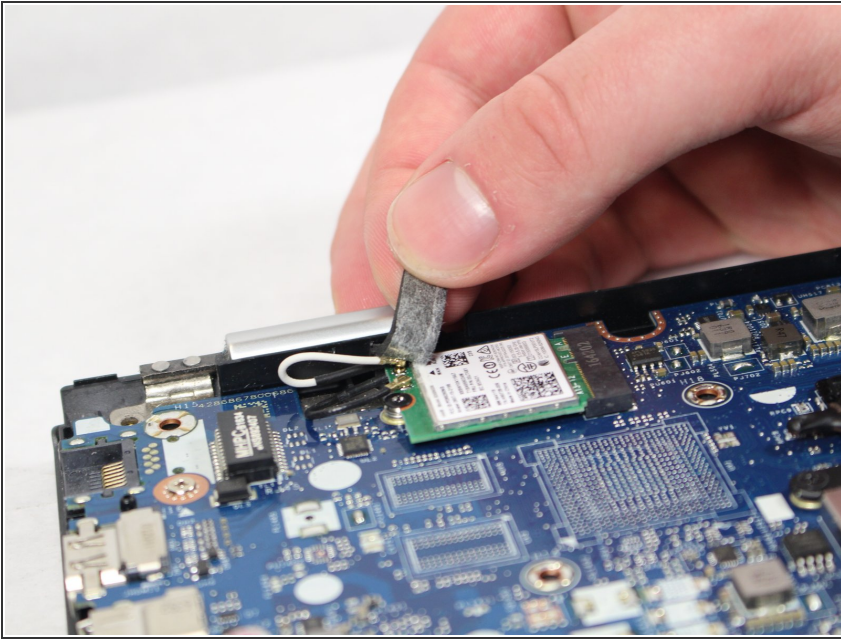
- Remove the eight 6 mm screws using a Phillips #0 screwdriver.
- Remove the two 11 mm screws using a Phillips #0 screwdriver.

Step 2



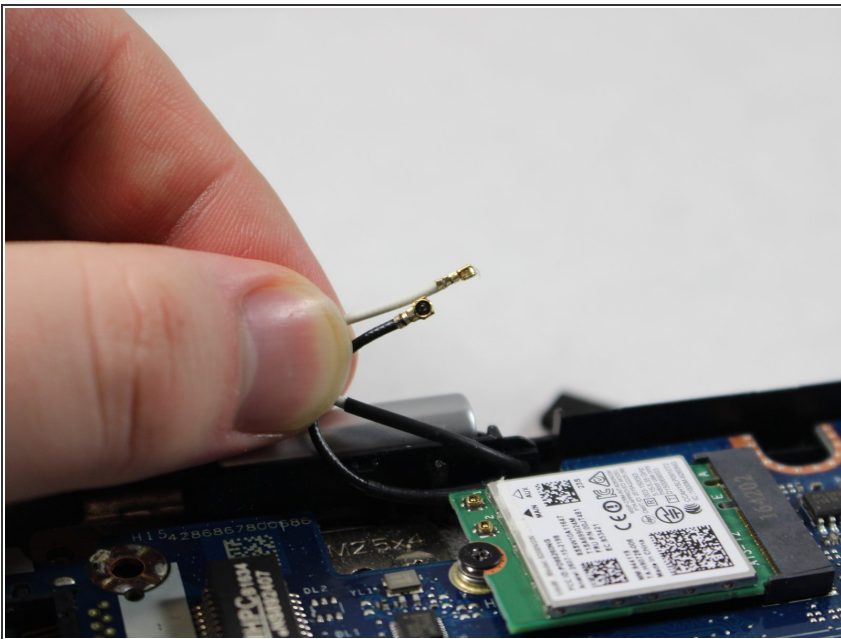
- Pry the back cover off by inserting the plastic opening tool at the hinges and wedging it between the Back cover and the body.
- Follow along the back edge with the plastic opening tool, lifting the cover off as you go. It is normal to hear snapping/clicking sounds as the back cover is held on by clips.
- Remove the cover.

Step 3 — Wifi Card



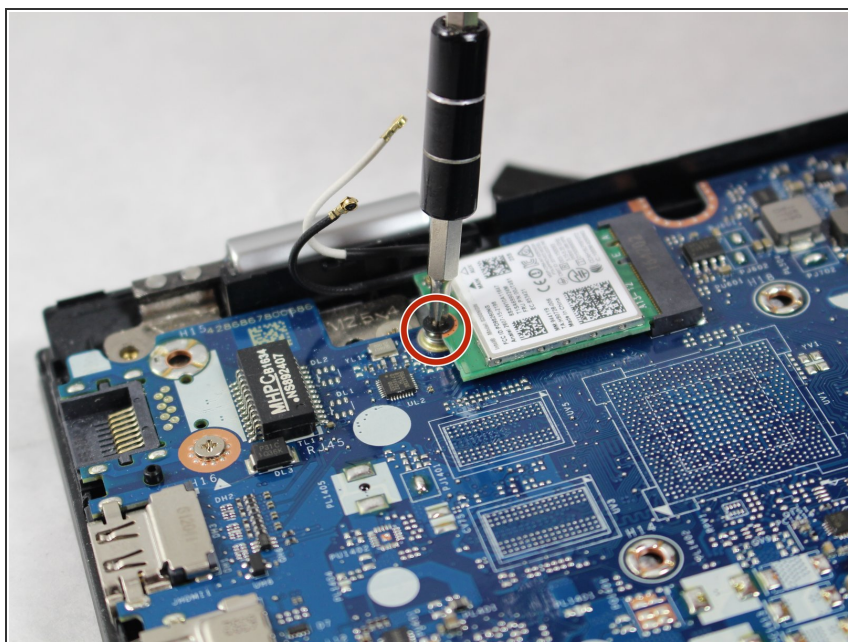
- Remove the foam on the WIFI card.

Step 4



- Remove the wires attached to the WIFI card.

Step 5



- Unscrew the 4mm screw holding wifi card.

To reassemble your device, follow these instructions in reverse order.