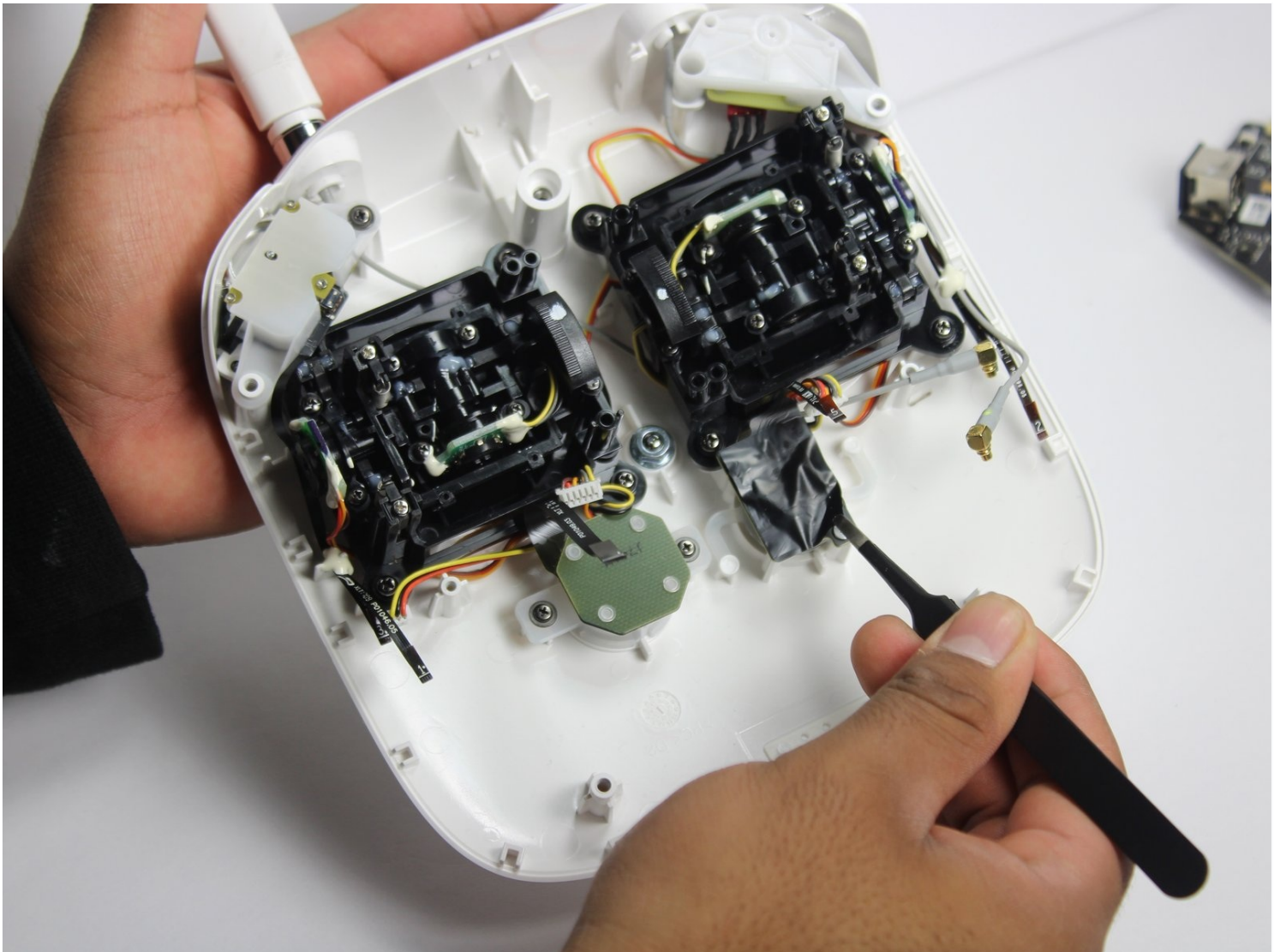




DJI Phantom 4 Advanced Remote Controller Power Button Replacement

The DJI Phantom 4 is a drone used for...

Written By: Angel Cortez



INTRODUCTION

The DJI Phantom 4 is a drone used for photography and videography. This guide will show you how to replace the power button on the Advanced Remote Controller. Make sure the controller is powered off during this process. Finally, keep track of all of your screws and the three different sizes.

TOOLS:

Phillips #0 Screwdriver (1)
Spudger (1)
Tweezers (1)
TR8 Torx Security Screwdriver (1)
Phillips #00 Screwdriver (1)
Pair of Hands (1)

PARTS:

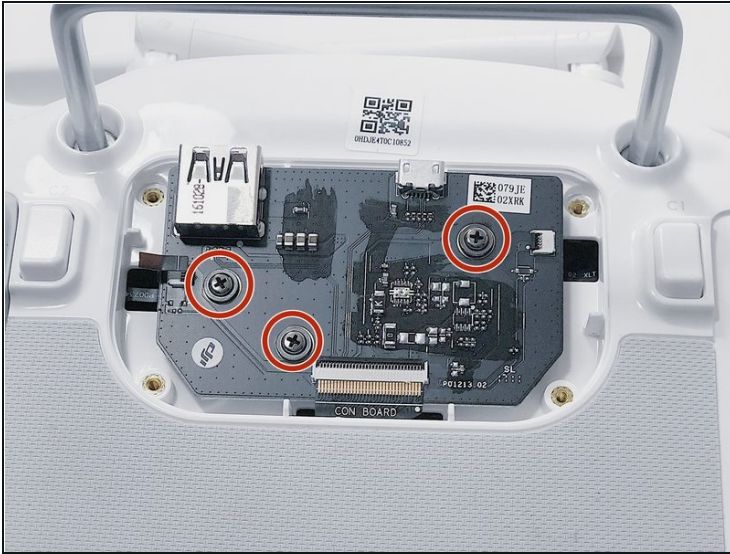
DJI Phantom 4 Advanced Remote Controller Upper Shell (1)

Step 1 — Back Panel



- Remove the four screws with a Torx T8 screwdriver to access the back con board.

Step 2

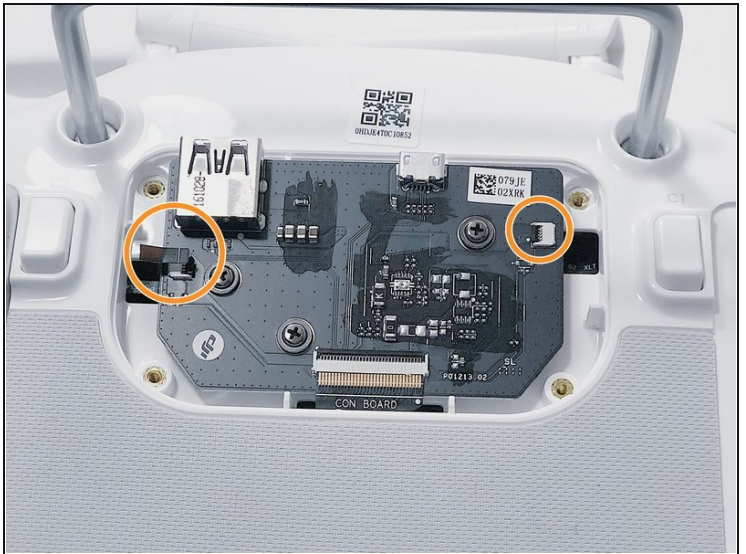
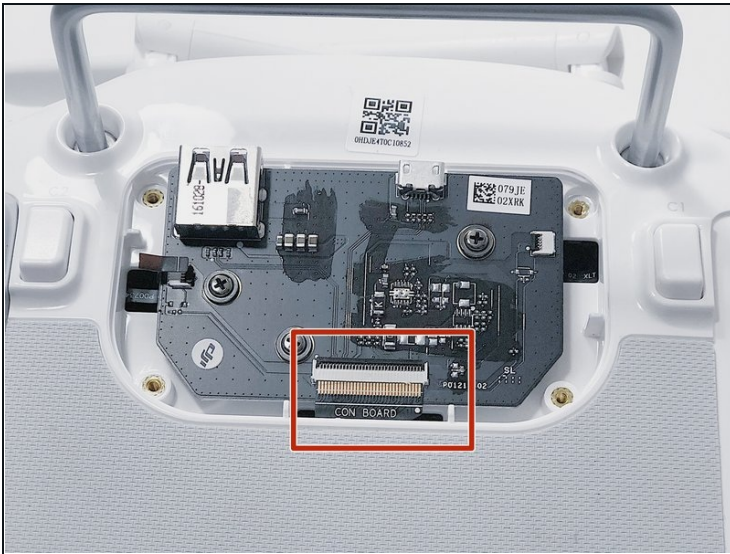


Phillips #00 screwdriver.



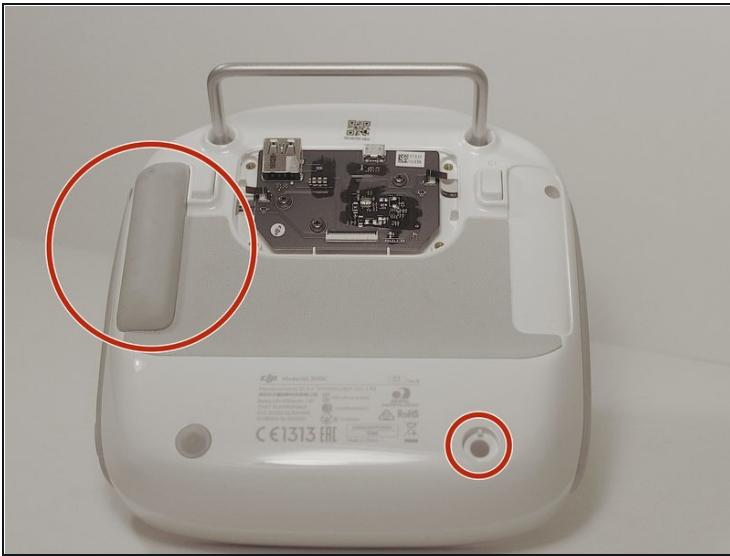
- Remove three screws using a Phillips #00 screwdriver.

Step 3



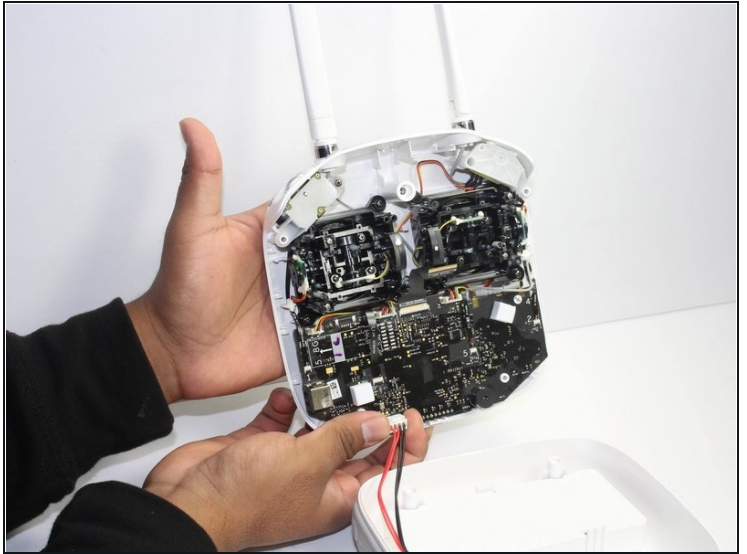
- With [tweezers](#), gently remove the large con board tab.
- Use your hands to remove the two small clips. Pull out from the socket, in a horizontal direction.

Step 4



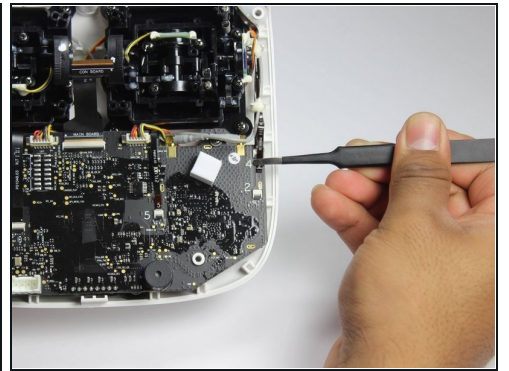
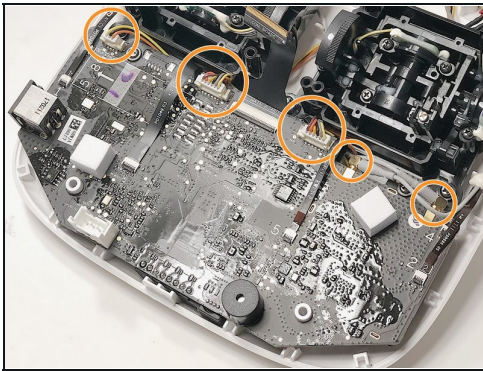
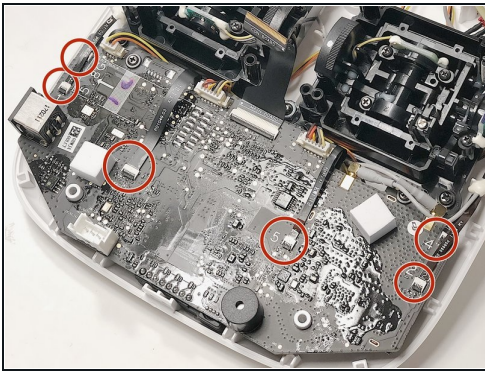
- Peel off the rubber grips to access the screw holes.
- ⚠ Make sure to save your grips and do not to get them stuck to anything, you are going to want to save the adhesive.
- Remove the back board and set it aside.

Step 5



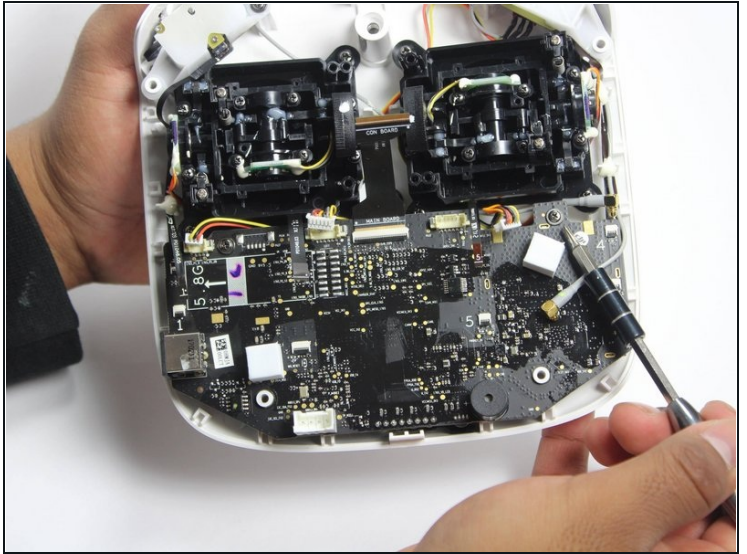
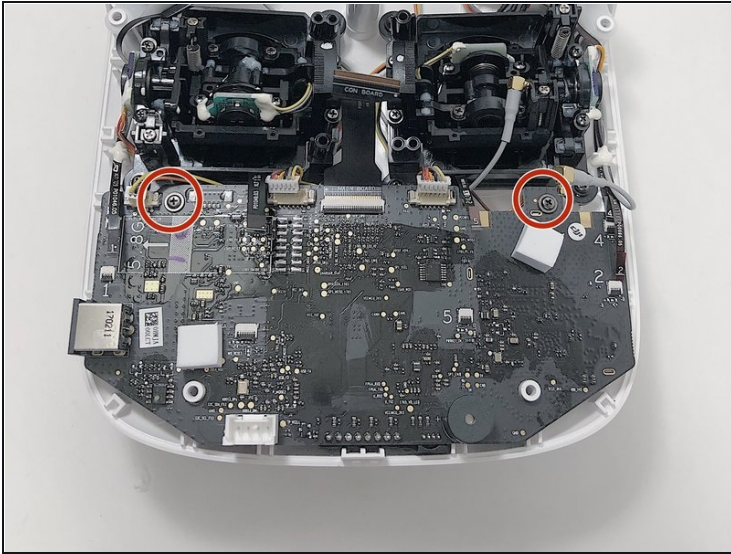
- Pull apart the back plastic panel.
- ① Recommended tool for this would be the metal spudger, but not required.
- Once the back panel is off, you will have access to the motherboard.

Step 6 — Motherboard



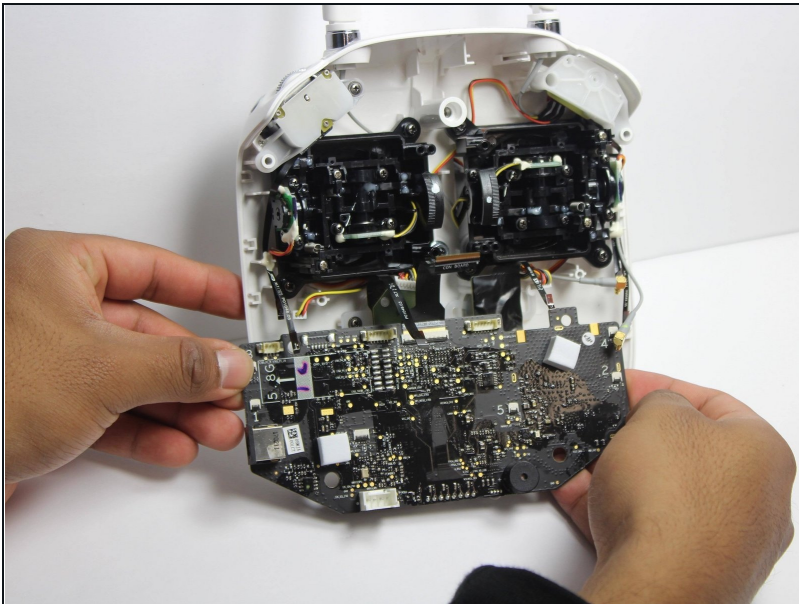
- Disconnect ribbon tabs 1,2,5,8G, and 3.
 - Remove ribbon tab by pulling gently along motherboard. Do not pull straight out.
- Then remove the plugs

Step 7



- With the Phillips #00 screwdriver, remove the two Phillips screws.

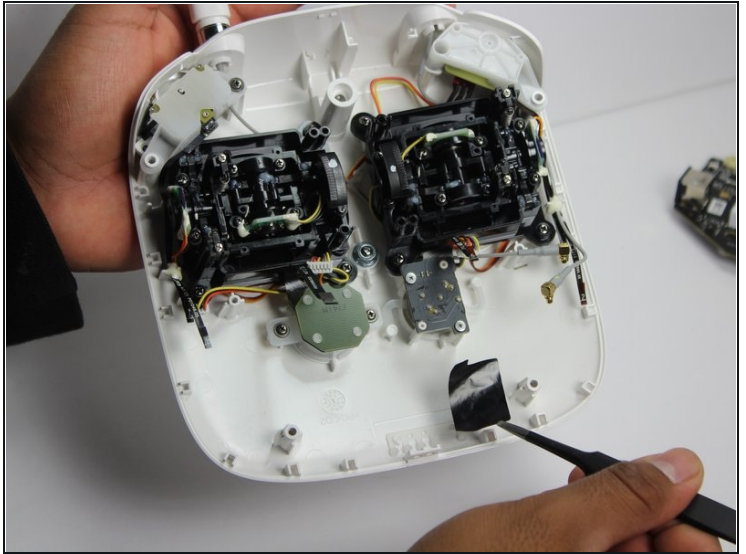
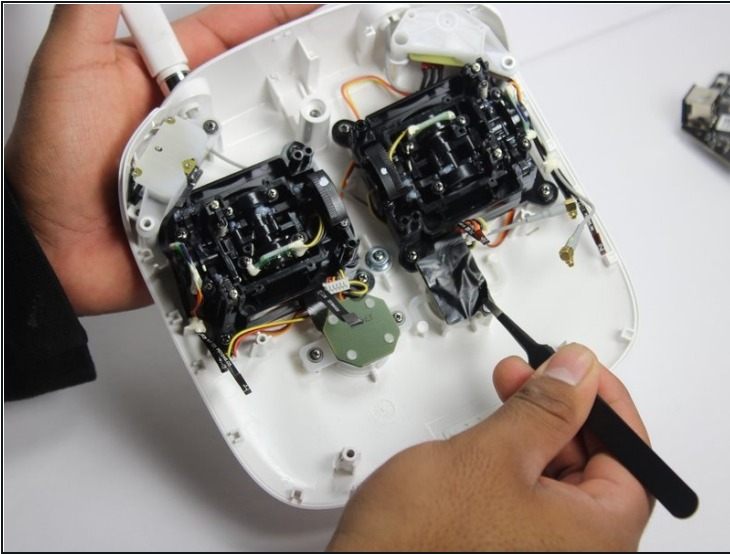
Step 8



⚠ Double check to make sure all tabs, plugs and screws are removed or disconnected.

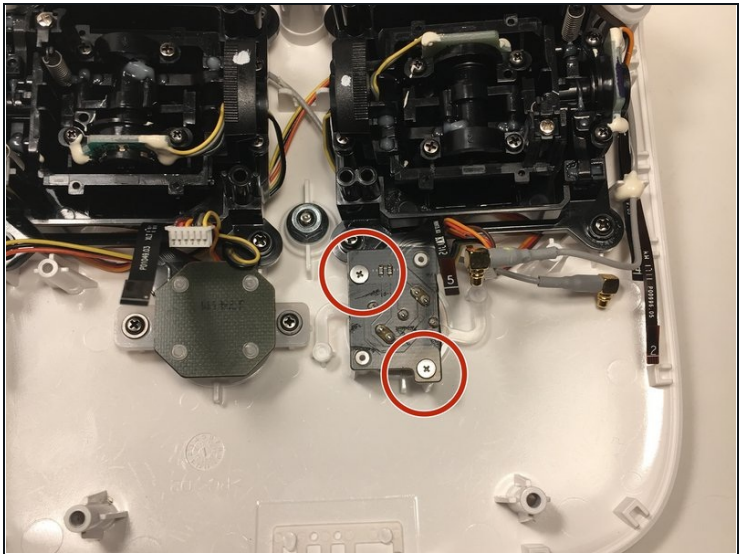
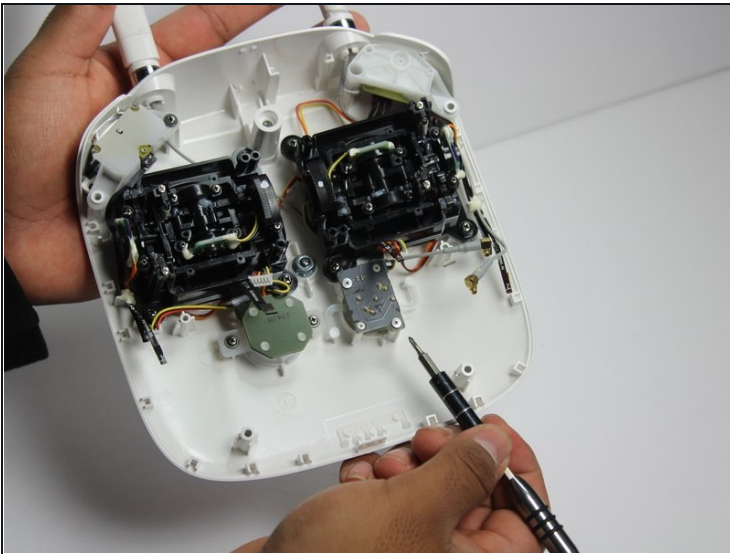
- Gently lift motherboard out of the case.

Step 9 — Power Button



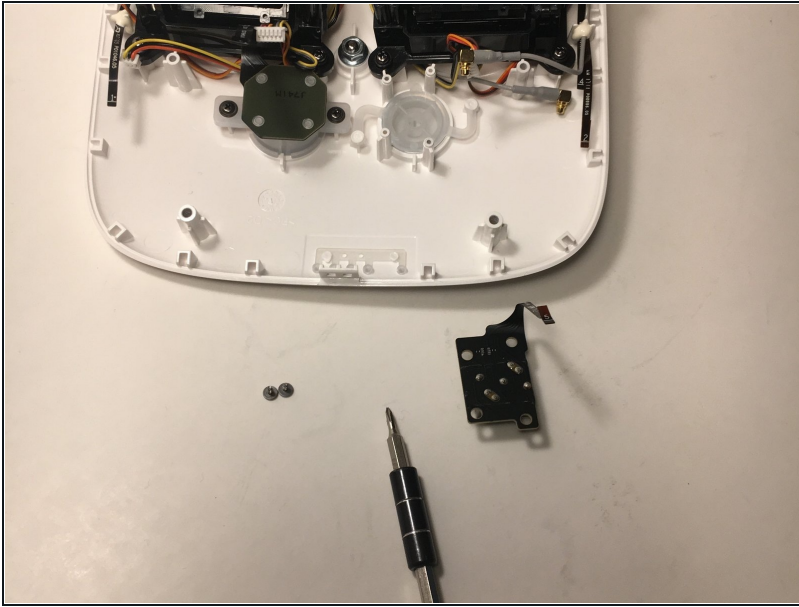
- Carefully remove the plastic. This will help you gain access to the power button panel.

Step 10



- With a Phillips #00 screwdriver, remove the two screws on the power button panel.

Step 11



- Gently pull the power button out from the panel. Replace it with a new one.

To reassemble your device, follow these instructions in reverse order.