



# D-Link DCS-5222L Motor Replacement

How to replace a D-Link DCS-5222L motor.

Written By: Jason Munyon



---

## INTRODUCTION

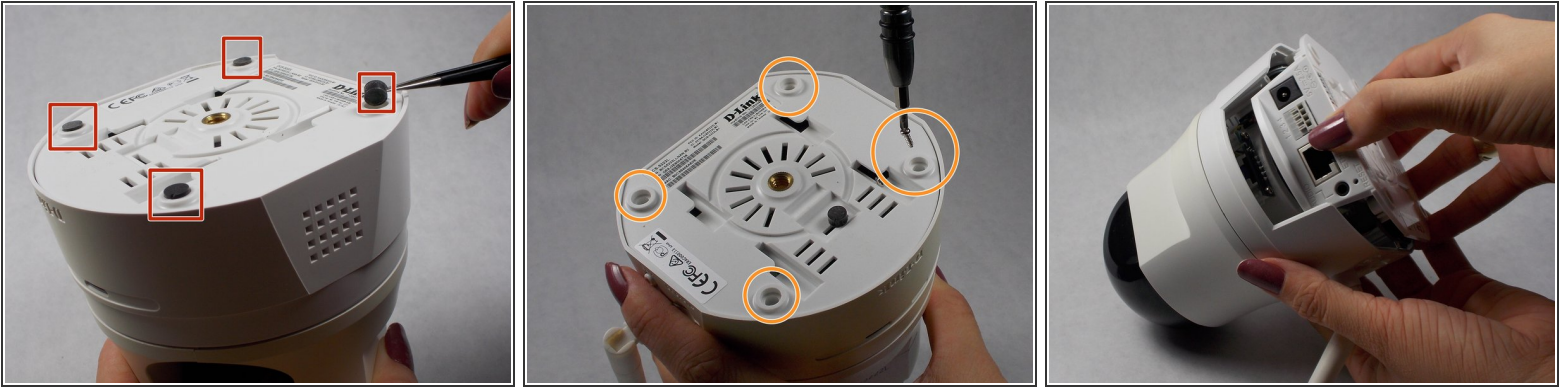
If your camera is failing to move in a certain direction one of the two motors inside may be malfunctioning. If this is the case the motor will need to be replaced. The replacement process is pretty simple and doesn't need many tools. It is important to keep track of the small screws, they are easily lost.

---

### TOOLS:

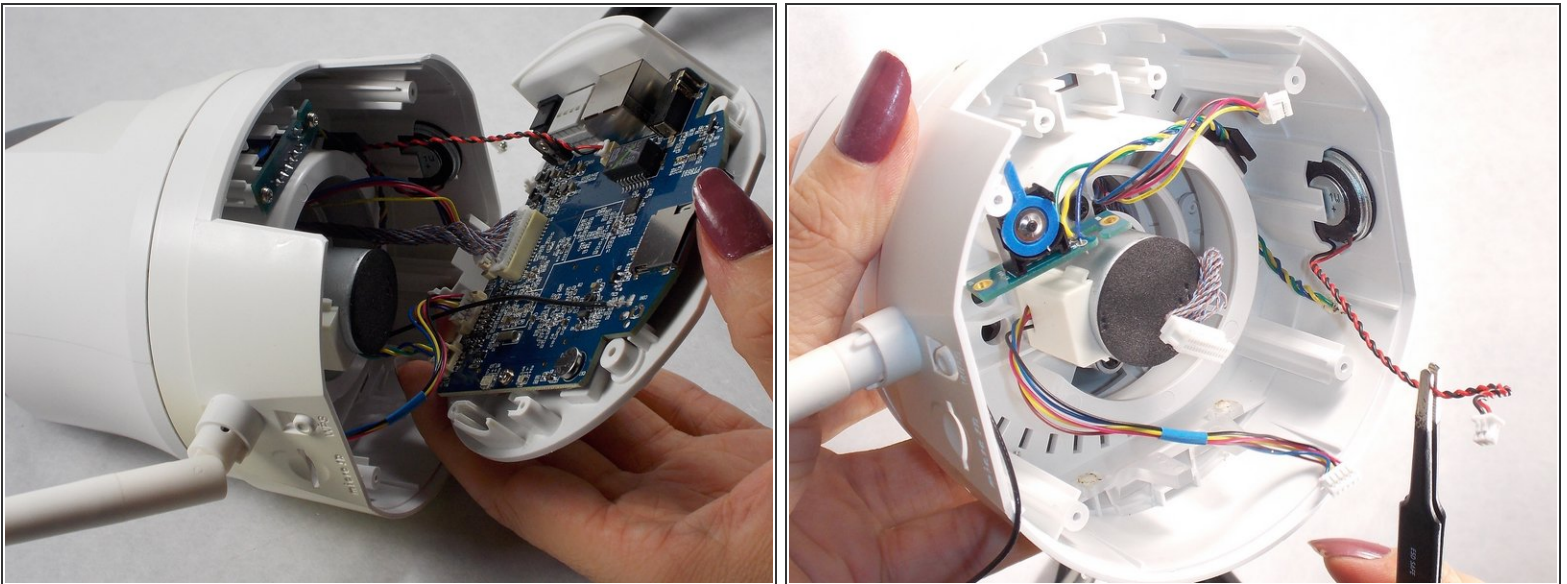
- [Spudger](#) (1)
  - [Tweezers](#) (1)
  - [Phillips #1 Screwdriver](#) (1)
-

## Step 1 — Motors



- Remove the four rubber feet on the bottom of the camera with tweezers.
- Remove the four screws using a Phillips #1 screwdriver.
- Remove the lower piece of the camera body.

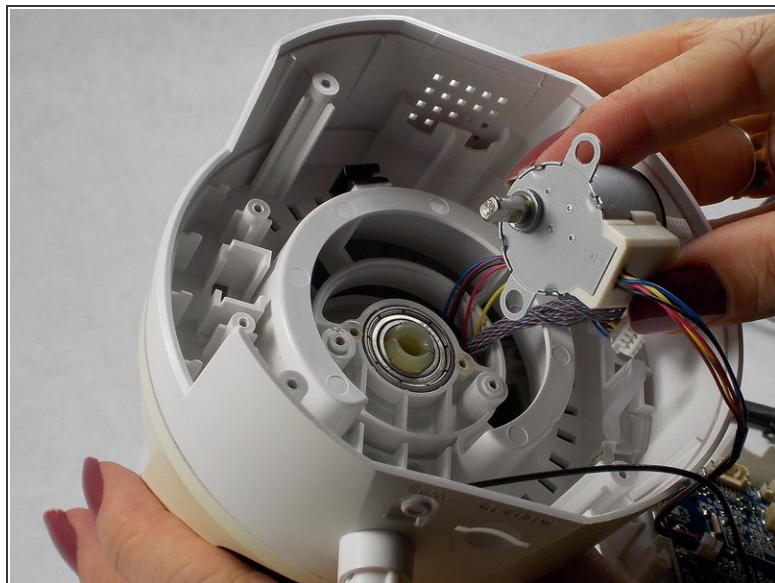
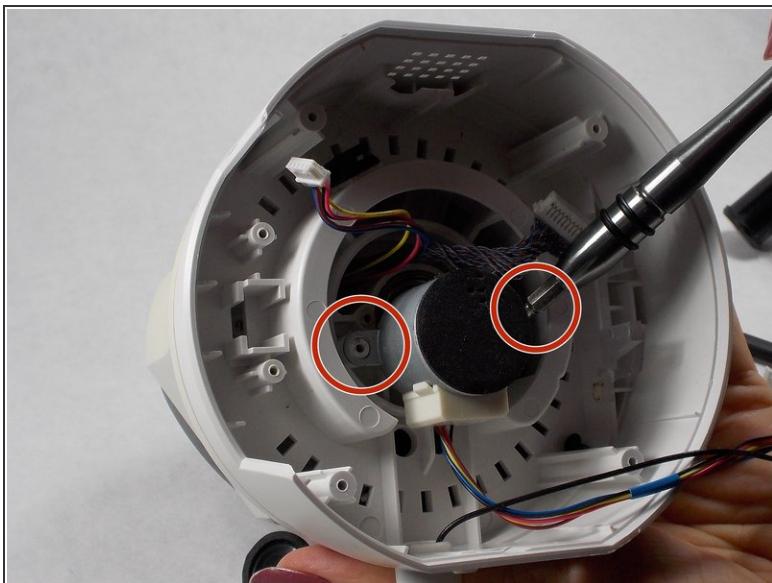
## Step 2



- Remove the motherboard and bottom of the camera body.
- Disconnect the five cables from the motherboard using tweezers.

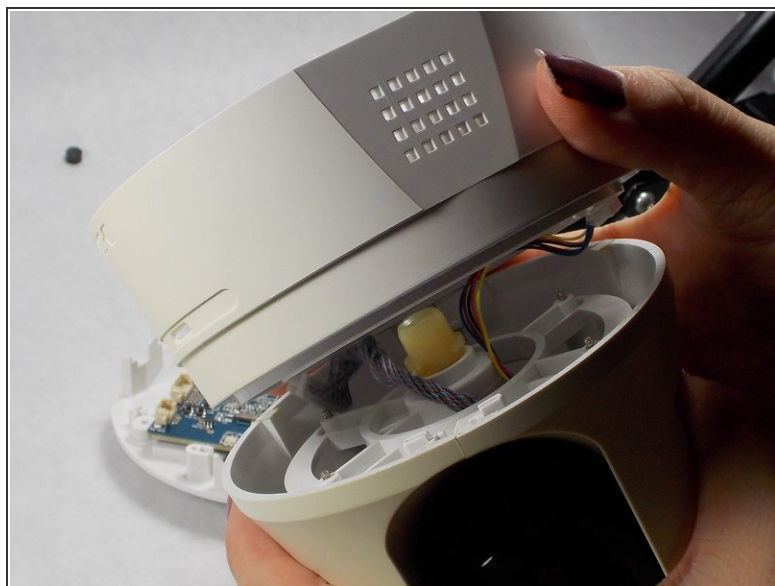


## Step 3



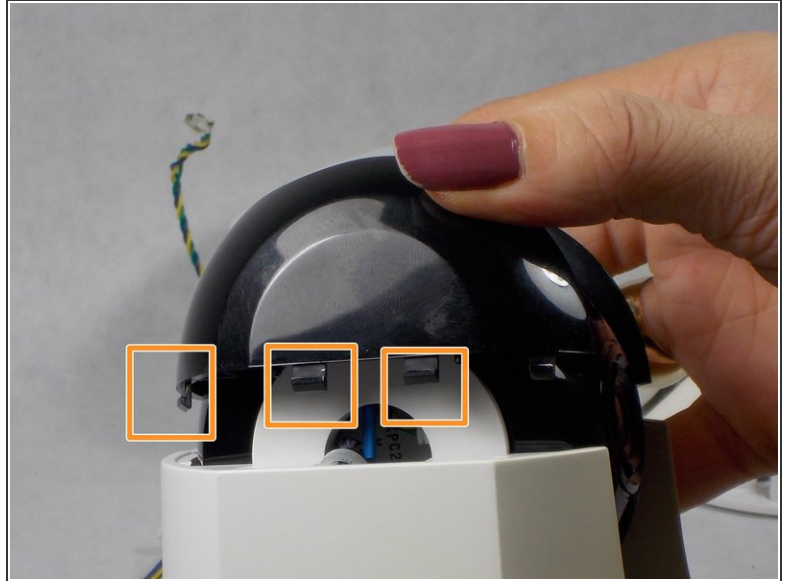
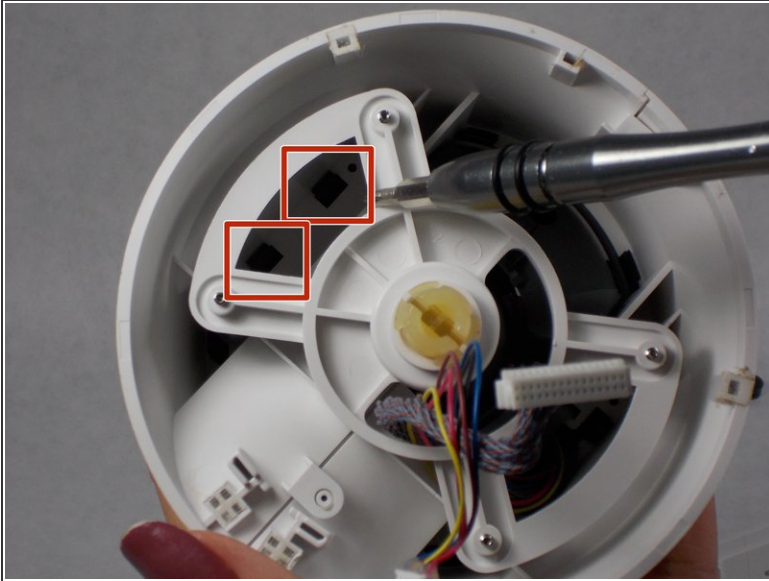
- Use a #1 Phillips screwdriver to remove the two 7mm screws holding the motor in place.

## Step 4



- Using your hands, separate the bottom of the body from the upper portion.

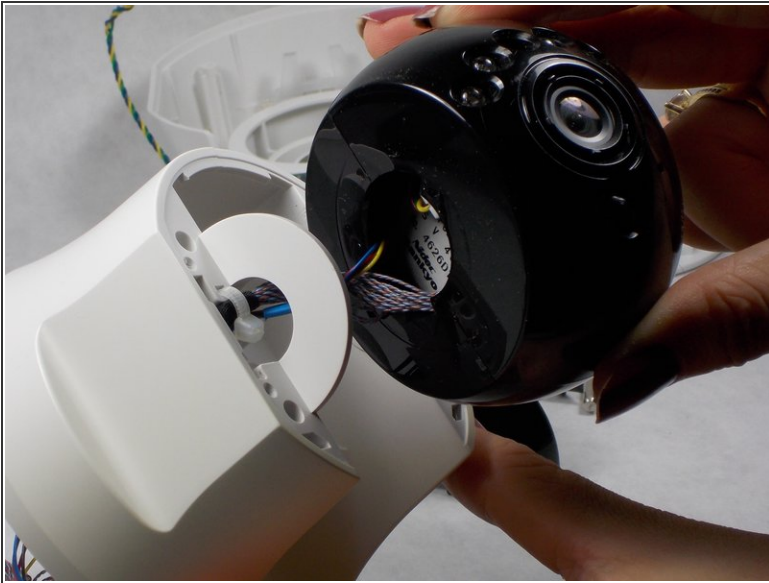
## Step 5



- To remove the top of the camera you must push in the black tabs using the spudger. There are 3 tabs per side.
- While pushing in the tabs, you can now lift the top black portion of the camera using your hands.

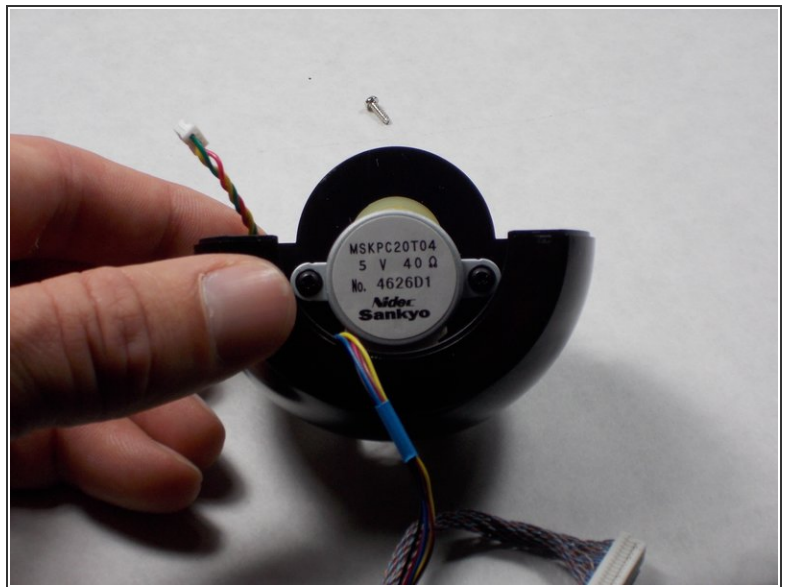
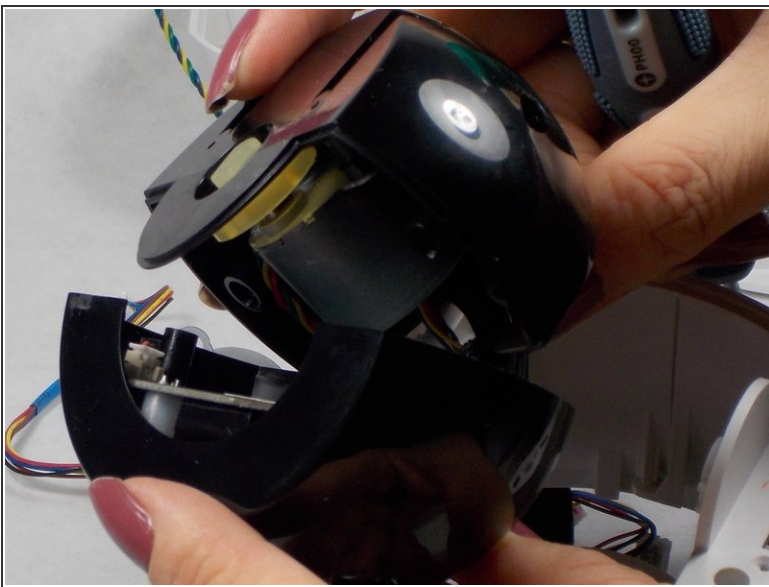


## Step 6



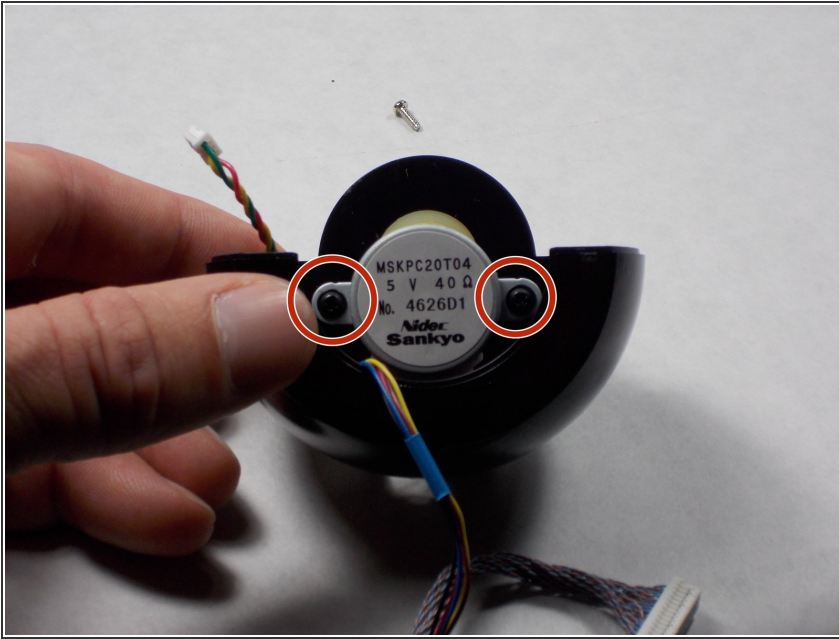
- With a little wiggle, the camera module will come free from the body.
- Unscrew the two 7mm screws on the camera using a #1 Phillips screwdriver.

## Step 7



- Pry apart the camera housing with your fingers to reveal the second motor.

## Step 8



- Unscrew the two 6mm screws holding the motor in place with a #1 Phillips screwdriver.

To reassemble your device, follow these instructions in reverse order.