



# Gateway NV57H50u Hard Drive Replacement

This guide will show how to remove and replace the Gateway NV57H50u hard drive.

Written By: Aaron Allison



---

## INTRODUCTION

Both the battery and rear cover guides should be completed before completing this guide. This guide can be used for replacing a dying hard drive or upgrading your current hard drive.

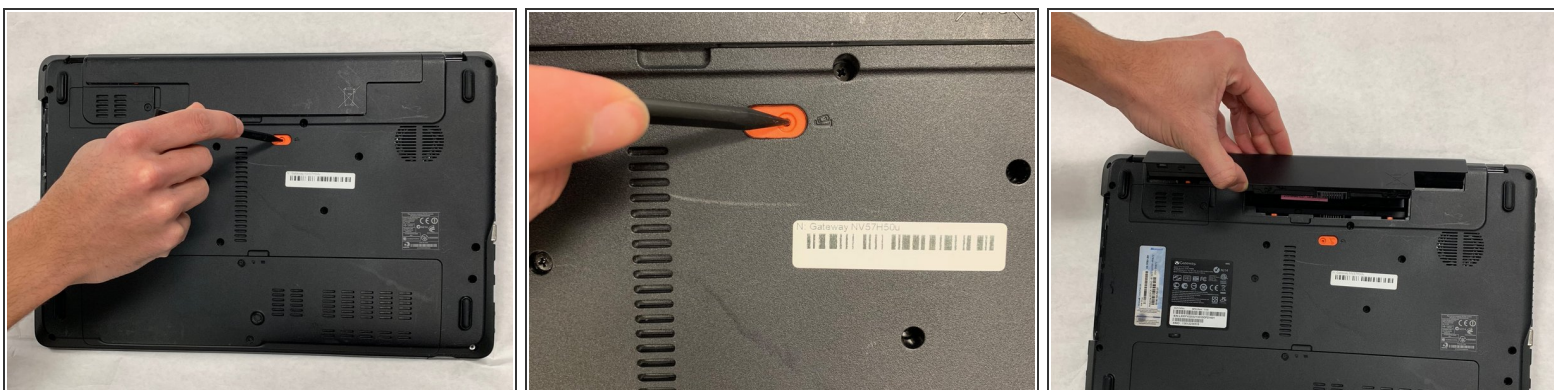
---



### TOOLS:

- [Spudger](#) (1)
  - [Phillips #0 Screwdriver](#) (1)
-

## Step 1 — Battery



- Push orange locking tab with spudger right, until battery lifts out of place.

⚠ Laptop should be unplugged from power supply before removal.

## Step 2 — Rear Cover



- Unscrew the two 7 mm long #0 Phillips screws.



## Step 3



- Lift and remove the cover panel via the indentation in the middle of the panel.

## Step 4 — Hard Drive



- Push spudger to the left until hard drive is moved from its original position.

## Step 5



- Pull plastic flap and pull hard drive away from laptop.

To reassemble your device, follow these instructions in reverse order.