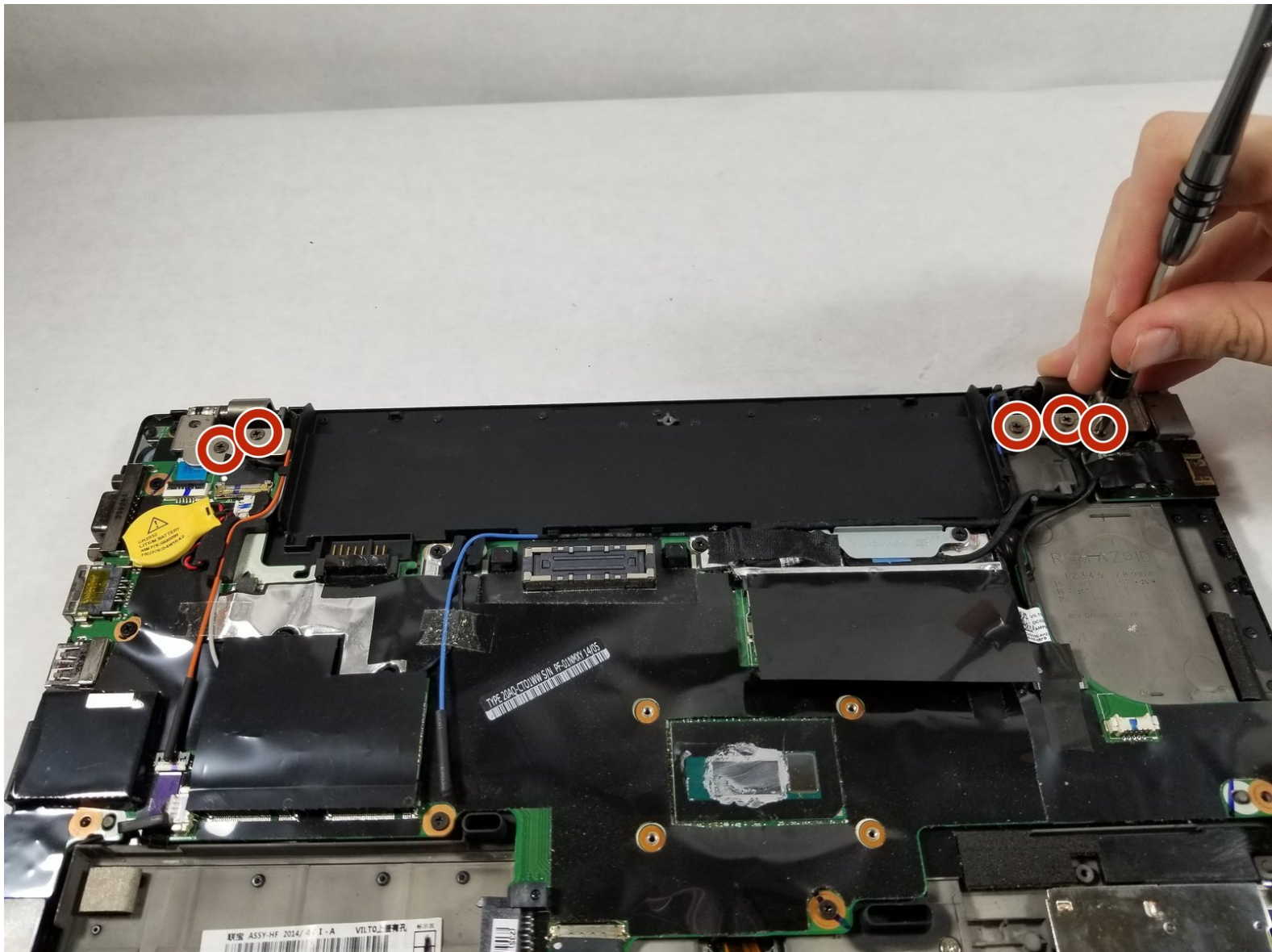




Lenovo Thinkpad T440s Display Replacement

This guide will show how to replace the display assembly of the Lenovo Thinkpad T440s.

Written By: Terelle Montalvo



INTRODUCTION

Is your screen filled with black spots or not displaying images properly? Consider using this guide to replace the display of your device.



TOOLS:

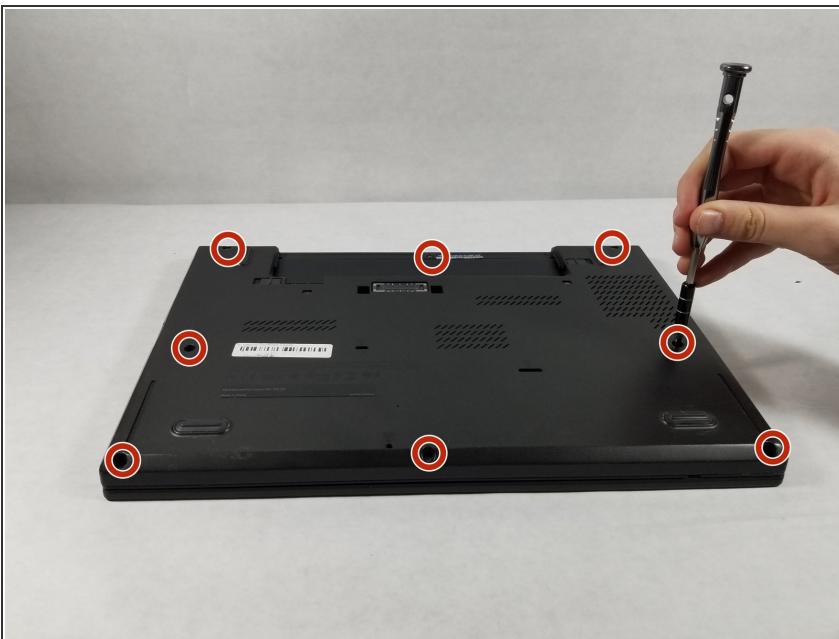
- [Phillips #1 Screwdriver](#) (1)
 - [Metal Spudger](#) (1)
-

Step 1 — Back Panel



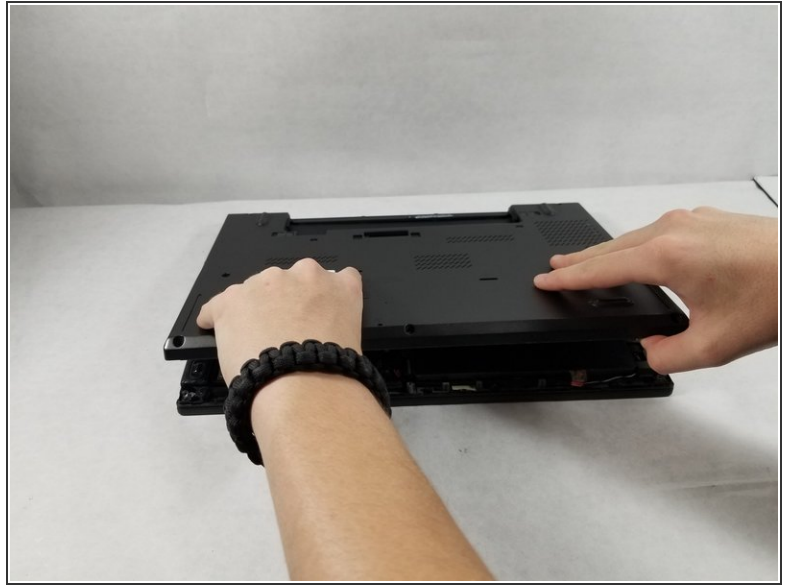
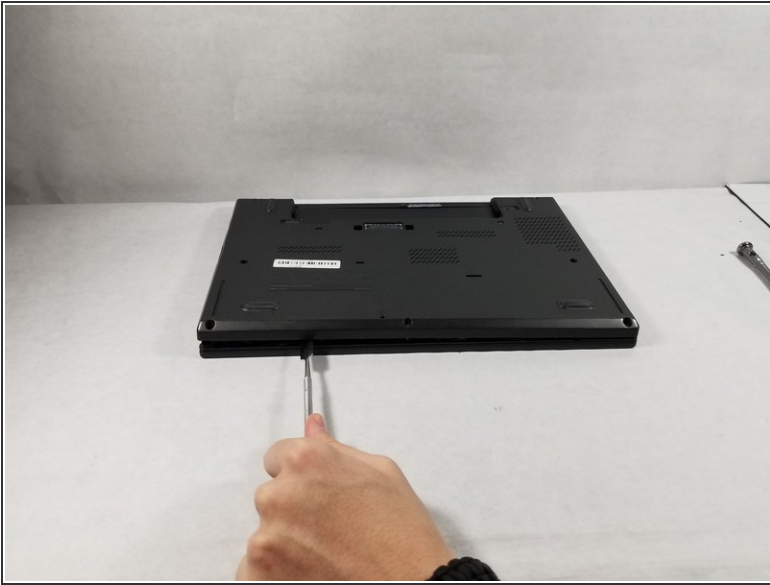
- Make sure to power down and turn off your device before proceeding with the repair.
- Flip your laptop over so that the backside is facing you.

Step 2



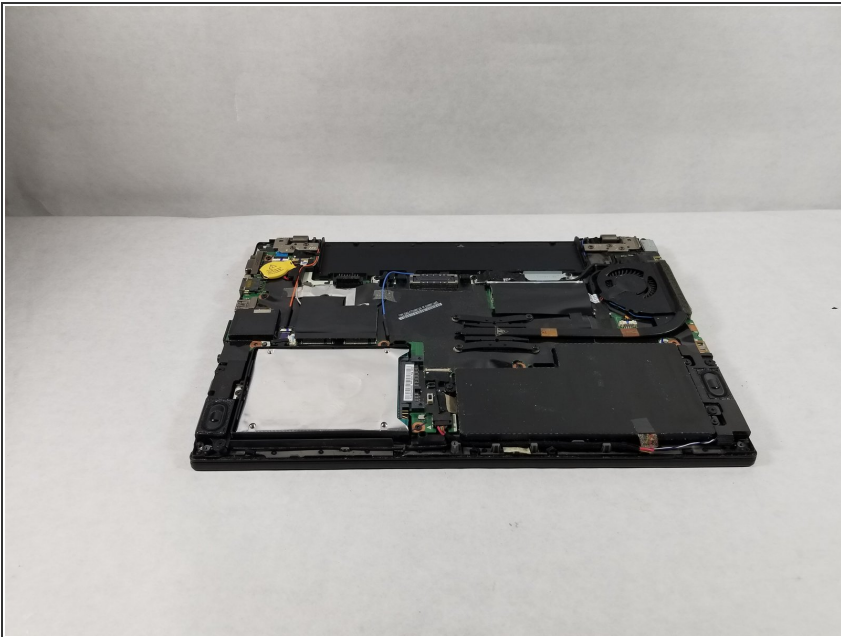
- Using a Phillips #1 screwdriver, remove the eight screws securing the backplate.
- Don't try to force screws which won't come out. They are held in place by a stopper on the reverse side. This will not prevent you from removing the backplate.

Step 3



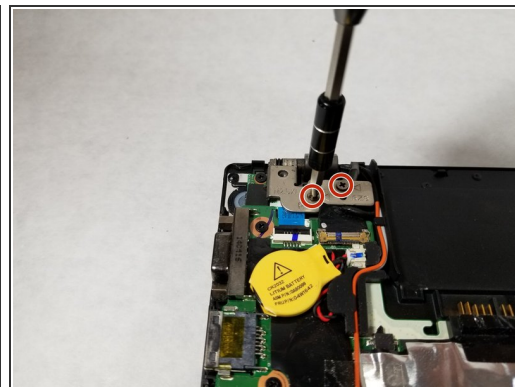
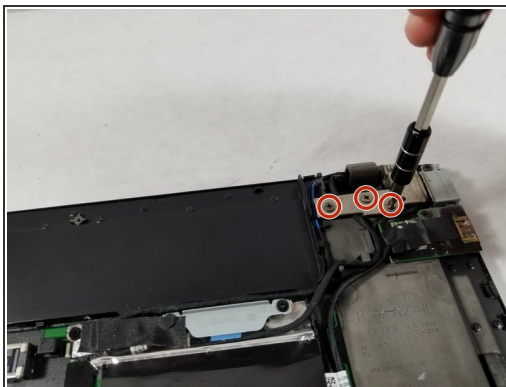
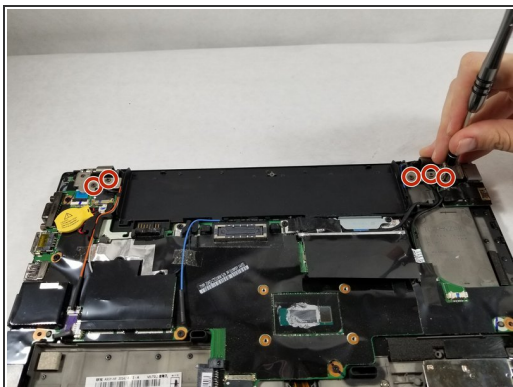
- Using the metal spudger, wedge it in the seam where the backplate meets the front plate and run the tool along the seam to separate the backplate.

Step 4



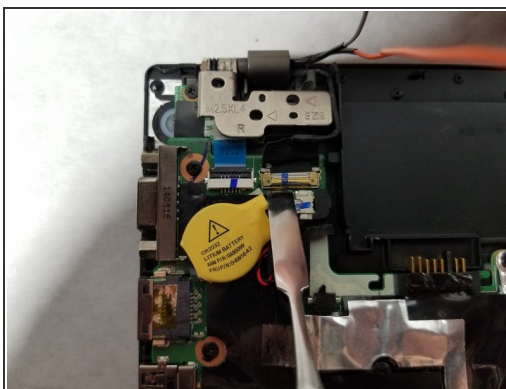
- Remove the back panel from the device.

Step 5 — Display



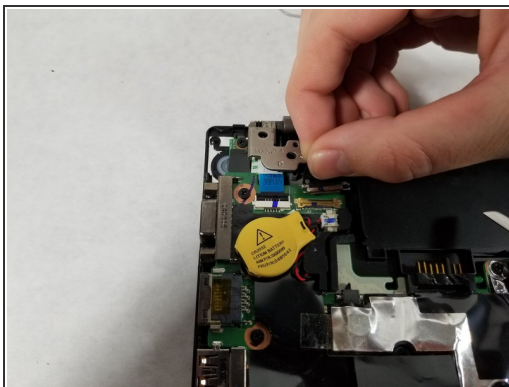
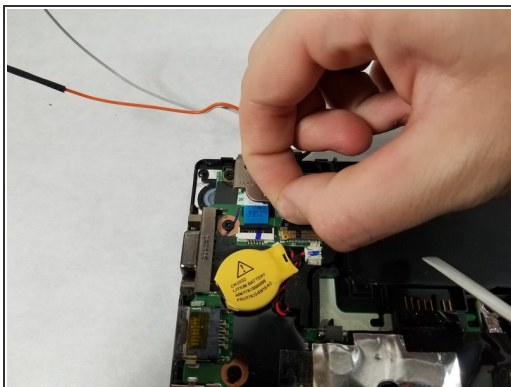
- Use the Phillips #1 screwdriver to remove the five screws securing the display mounts.

Step 6



- Use the metal spudger to pry up the lever securing the ribbon cable in it's connection housing.

Step 7



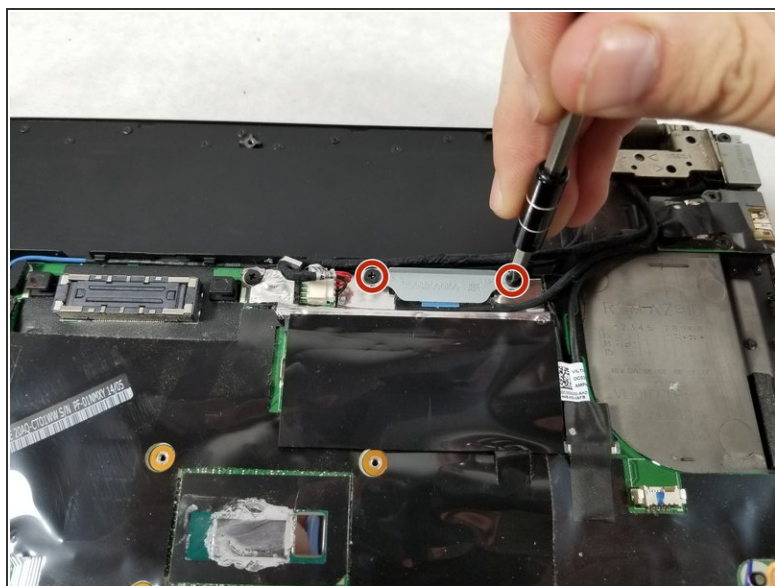
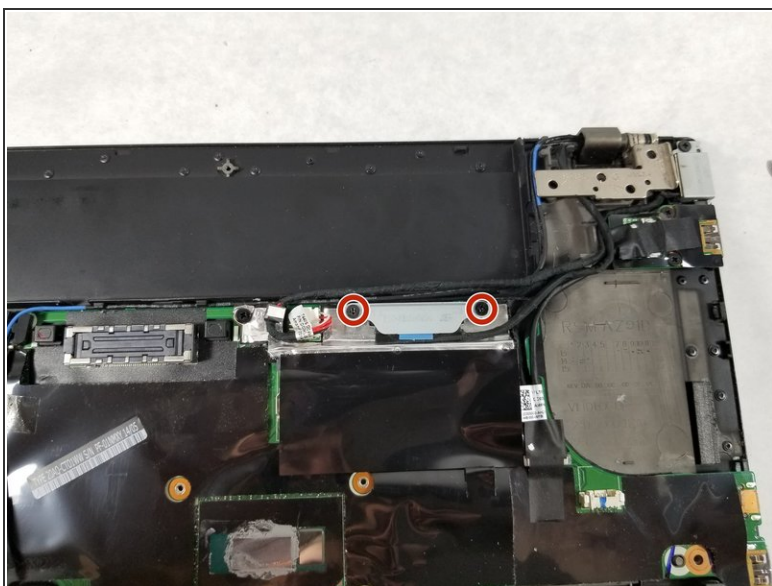
- Grab hold of the ribbon cable and pull it out of it's connection housing.

Step 8



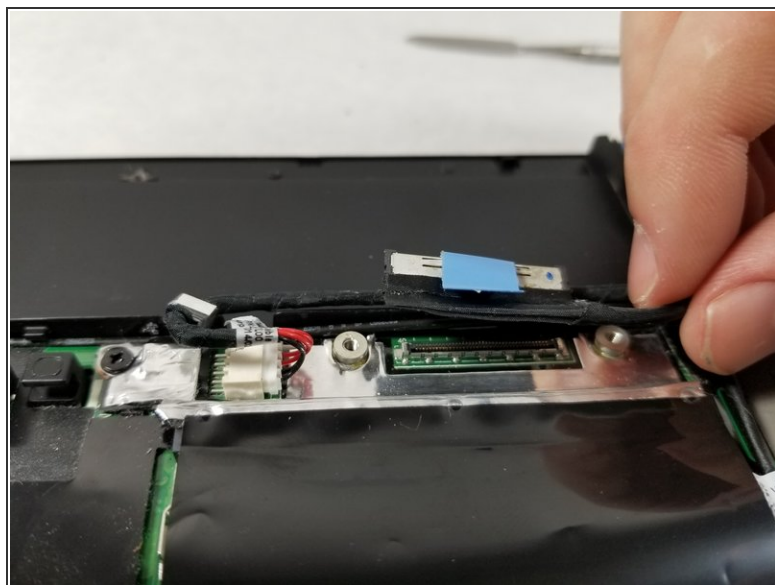
- Disconnect the white and blue wires connected to the mounted circuit by grabbing them close to the connection and pulling upward.

Step 9



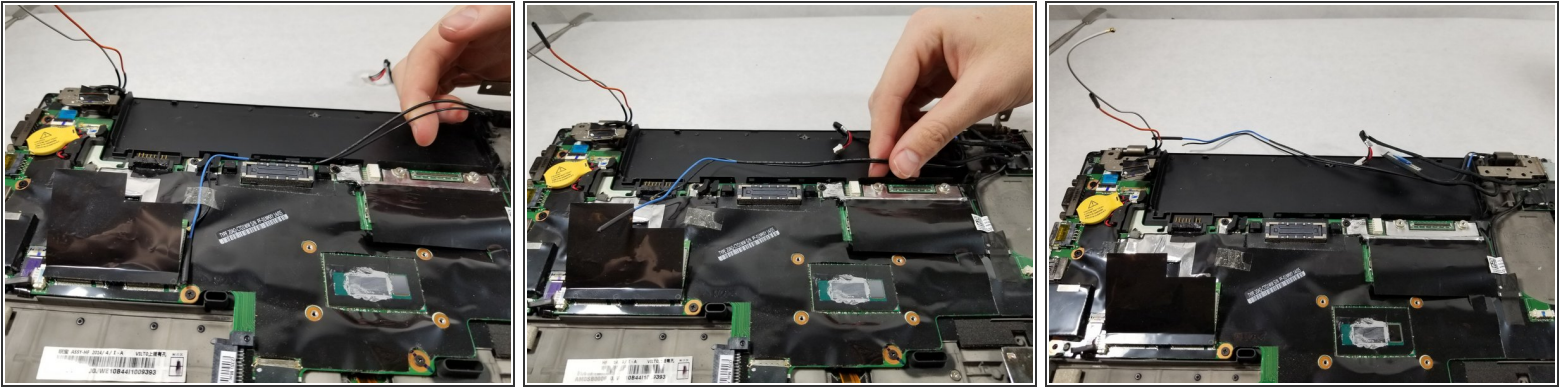
- Use the Phillips #1 screwdriver to remove the two screws securing the metal plate to expose the wire connection.

Step 10



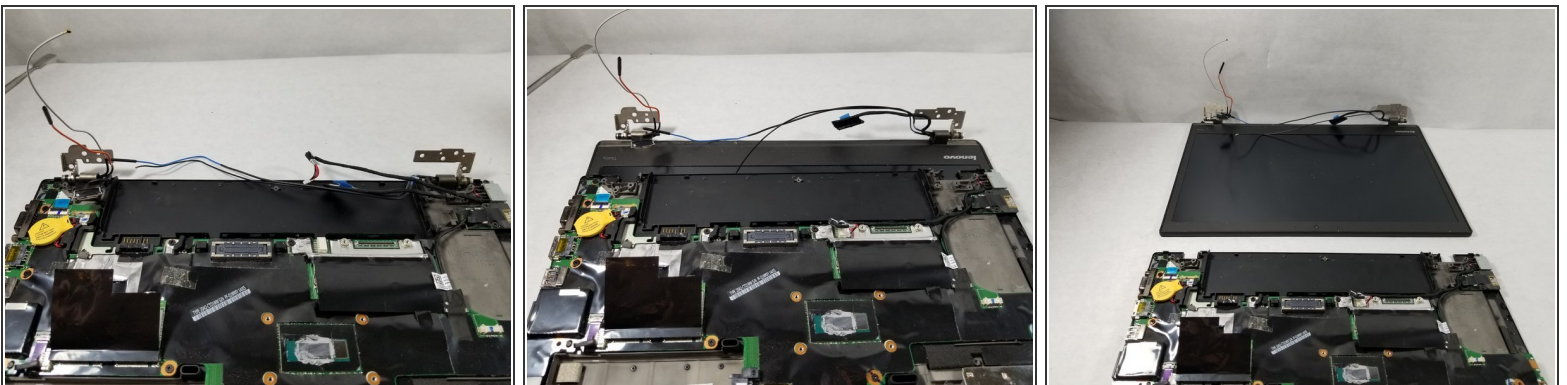
- Disconnect the wire by pulling it upward from the motherboard.

Step 11



- Unclip the 5 wires connected to the display assembly from the motherboard and move them out of the way.

Step 12



- Now that the display assembly is disconnected from the main body, lift both of the mounting brackets and remove the display assembly from the main body.

To reassemble your device, follow these instructions in reverse order.