



HP Pavilion g6-2228tx Optical Drive Replacement

The optical drive holds CDs and disc for the HP Pavilion g6-2228tx.

Written By: Hai Lin



INTRODUCTION

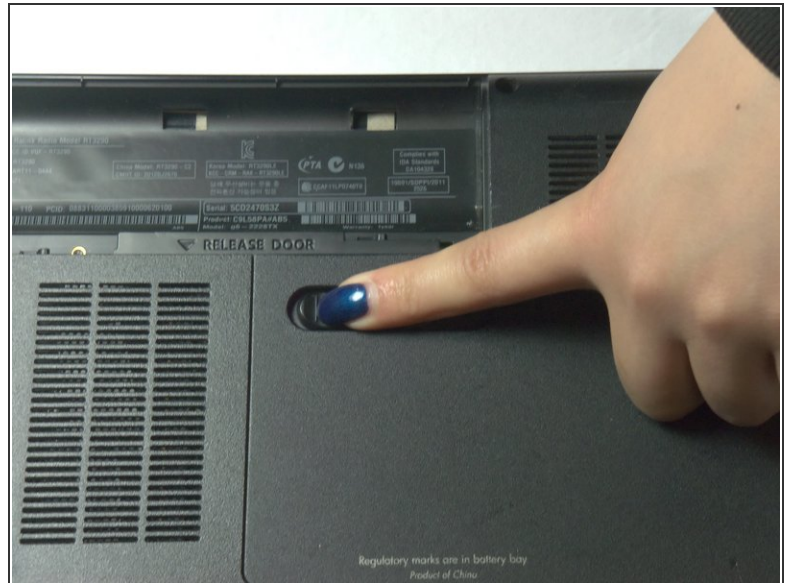
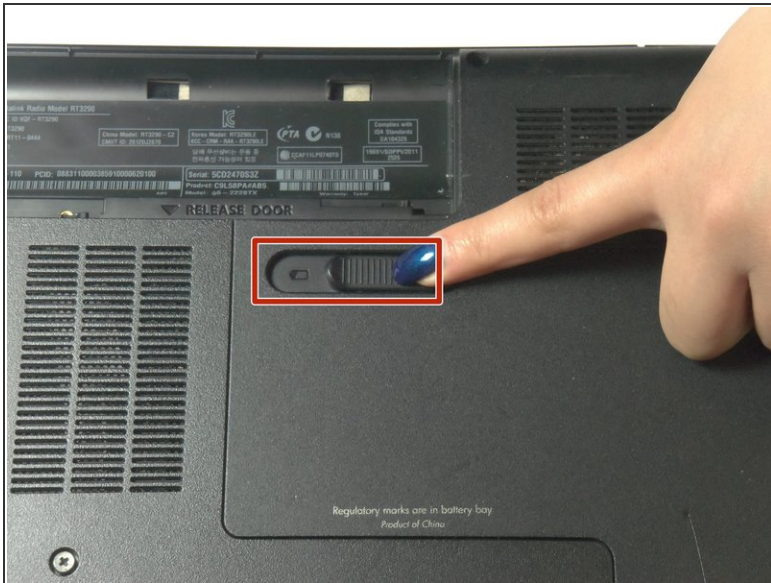
The optical drive allows the laptop to connect with CDs and disc to transfer information. It also allows laptop to play video or songs from the CD



TOOLS:

- [Phillips #0 Screwdriver](#) (1)
-

Step 1 — Battery



- Push the battery latch to the left to release the battery.
- ❗ Remove the battery from the device.

Step 2 — Hard Drive



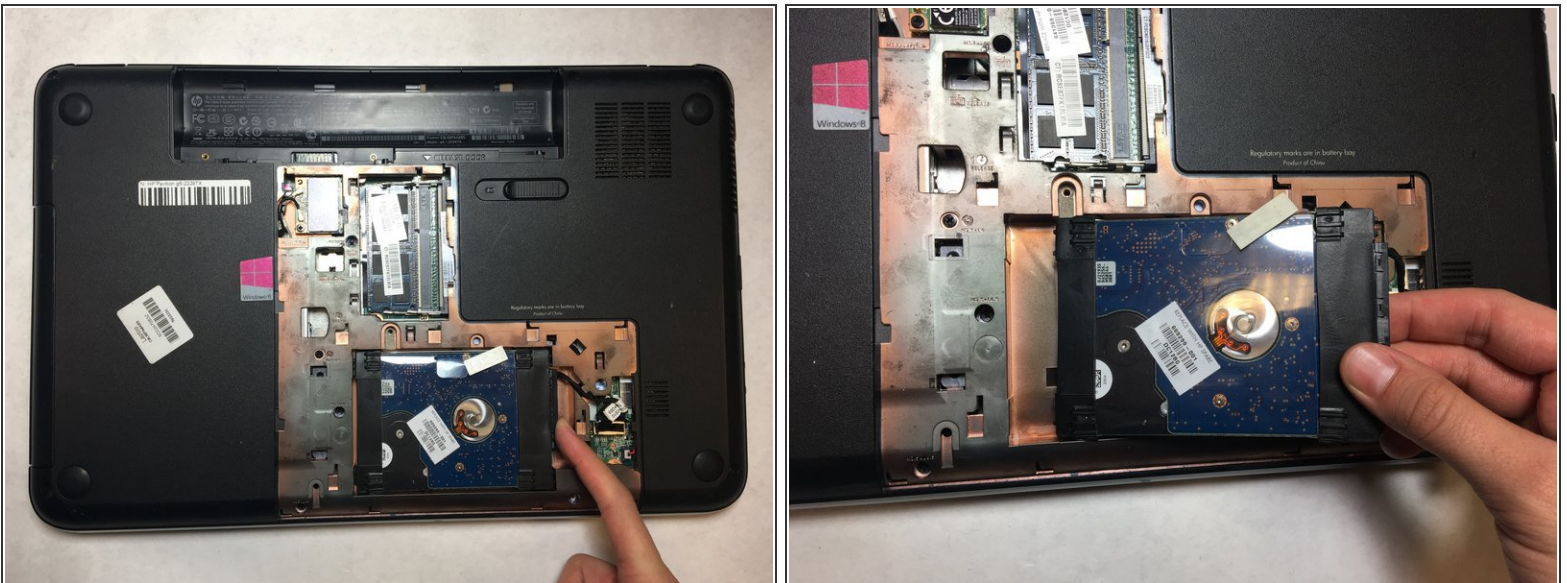
- Use a Phillips #0 screw driver to loosen the screw. The screw will not detach from the cover.

Step 3



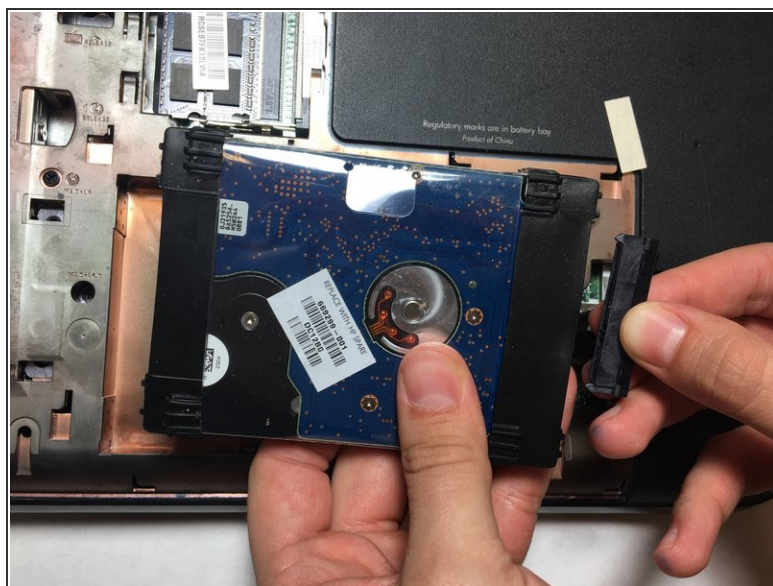
- Place your hand on the cover and slide the cover down.
- Use your hand to lift the cover from the bottom right and slide the cover to the right to remove the cover.

Step 4



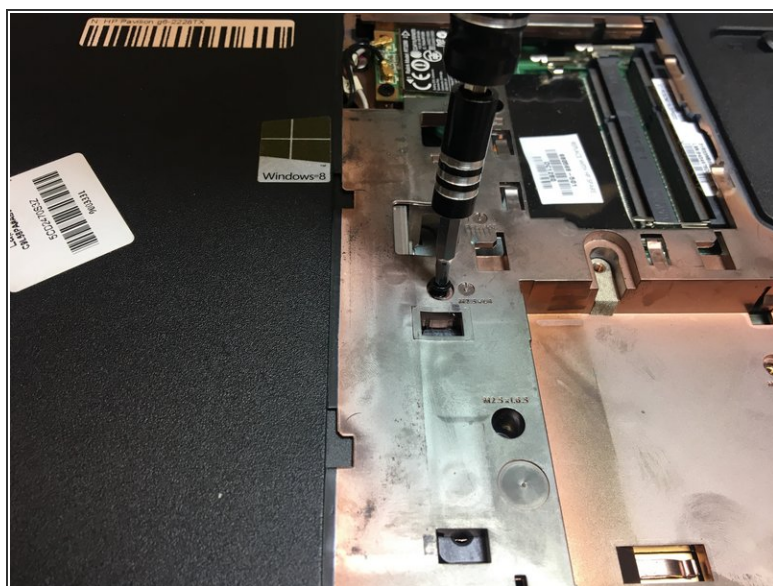
- Place one finger on the right side of the hard drive.
- Push the hard drive to the left and lift the hard drive up to remove it from the device.

Step 5



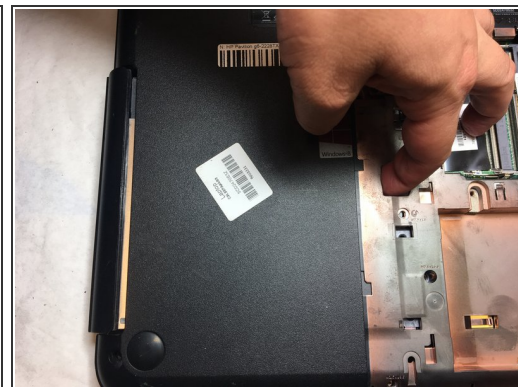
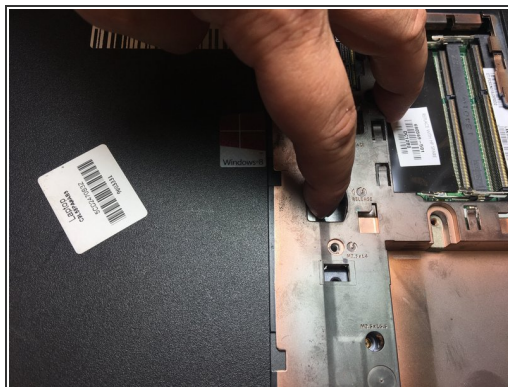
- Disconnect the connecting part by pulling the part to the right.
- Remove the hard drive from the device.

Step 6 — Optical Drive



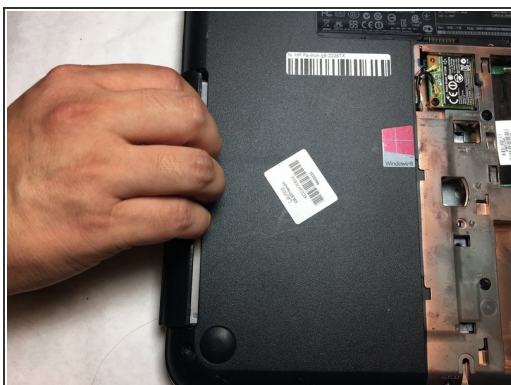
- Remove the 2.5mm screw with a Phillips #0 screw drive.

Step 7



- Put one finger into the release hole and push to the left until part of the optical drive comes out from the left of the laptop.

Step 8



- Grab the optical drive and pull to the left to remove it from the device.

To reassemble your device, follow these instructions in reverse order.