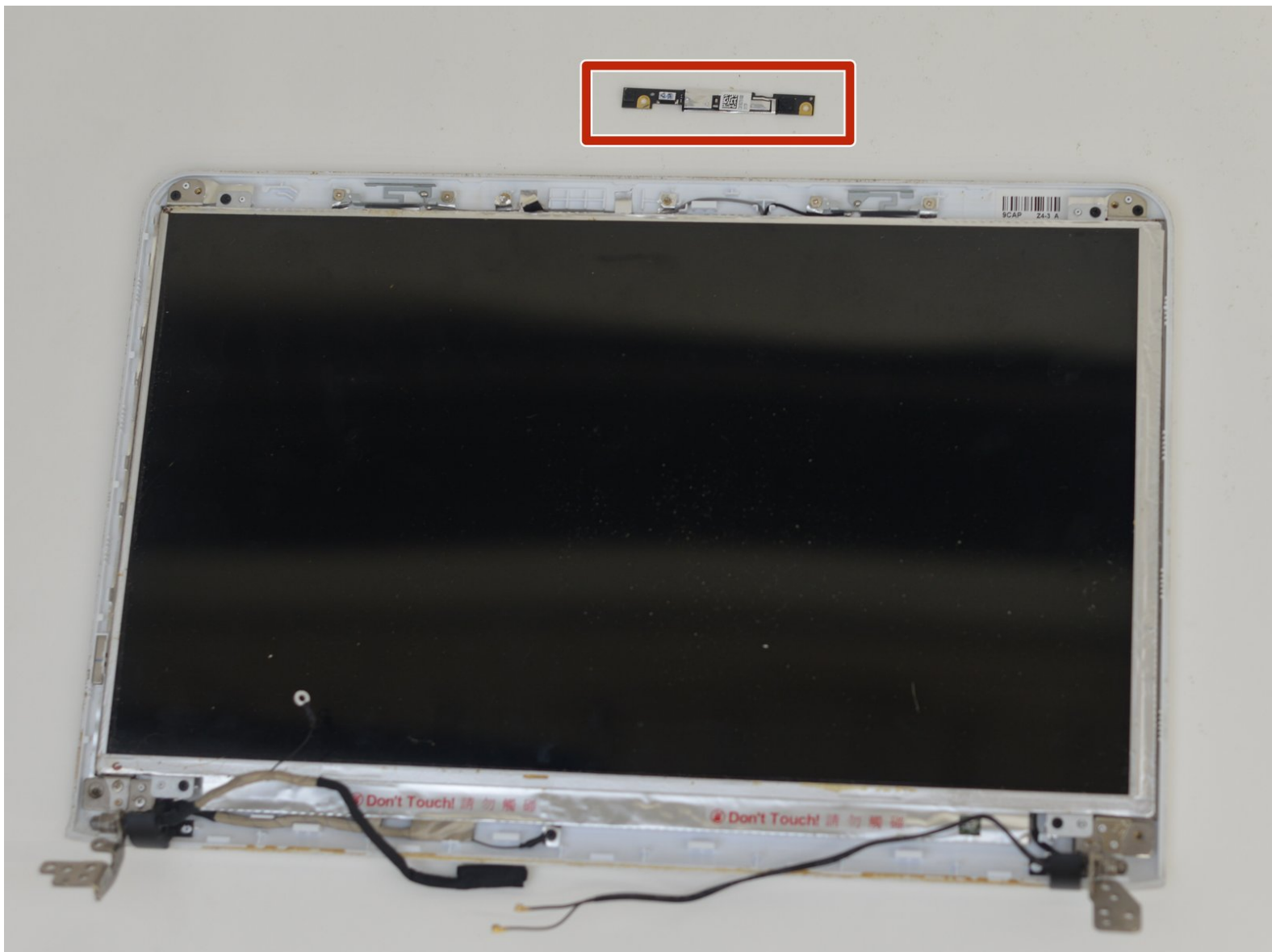




# Sony Vaio SVE151G11L Webcam Replacement

This is a guide to replace the Sony Vaio SVE151G11L Webcam.

Written By: Azka Khanani



---

## INTRODUCTION

The camera is the component that captures images for the laptop to process. The camera faces the user and is usually used for video communication. This guide shows the steps to remove the motherboard for repair or replacement.



### TOOLS:

- [iFixit Opening Tools](#) (1)
  - [Phillips #0 Screwdriver](#) (1)
  - [Spudger](#) (1)
  - [Phillips 0000 Screwdriver](#) (1)
-

## Step 1 — Battery



- Turn the laptop over so its underside is facing upwards and visible.

## Step 2



- Standing so that the barcode and warning labels are upright and legible, push the **left tab** up and away from yourself.

### Step 3



- Standing so that the barcode and warning labels are upright and legible, push the **right tab** up and away from yourself.

### Step 4



- Locate the small gap where the battery and the laptop shell meet. Lift from the gap and rotate the battery up and away from yourself.

## Step 5



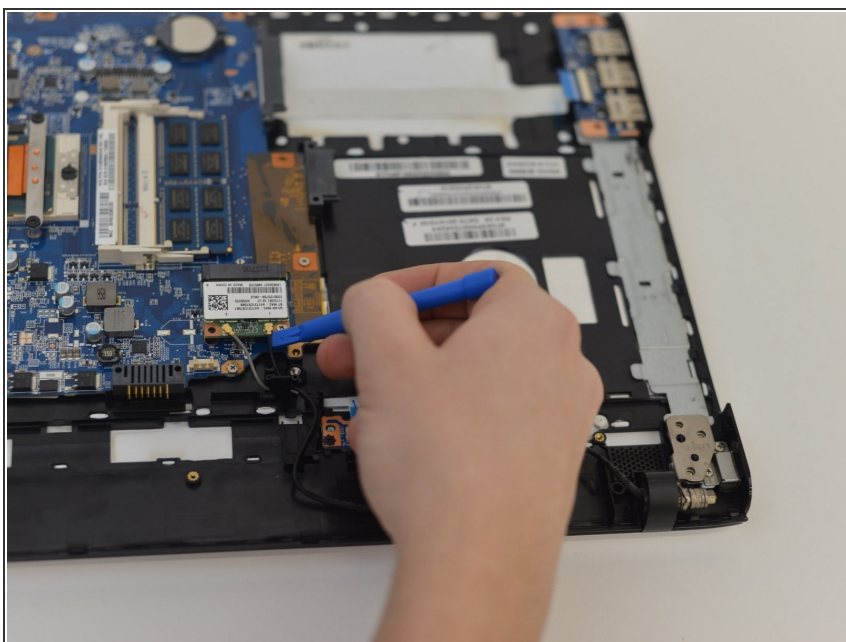
- Pull battery away from laptop.

## Step 6 — Display



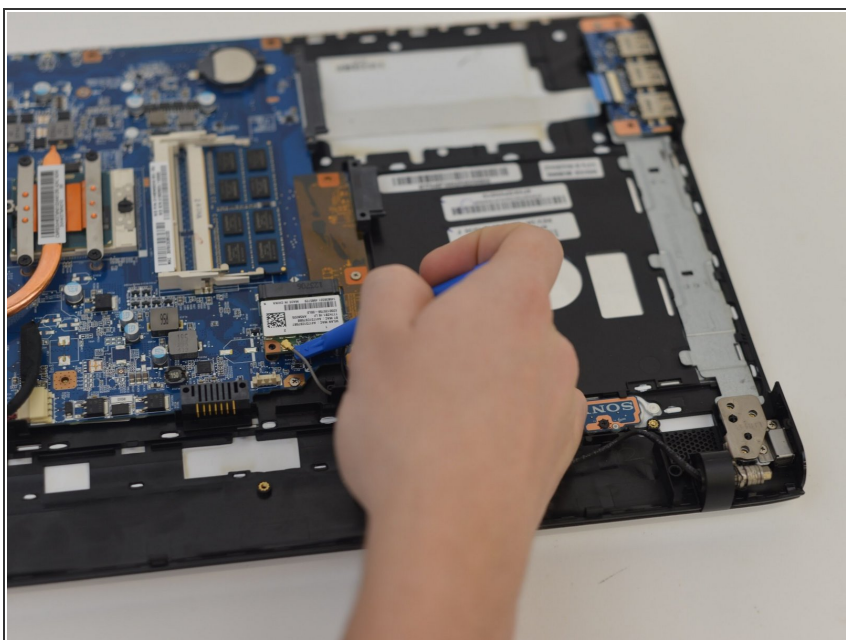
- Flip laptop over so the bottom is facing upwards.
- Remove bottom of laptop.

## Step 7



- Remove antenna wires attached to the WiFi card using a plastic opening tool.

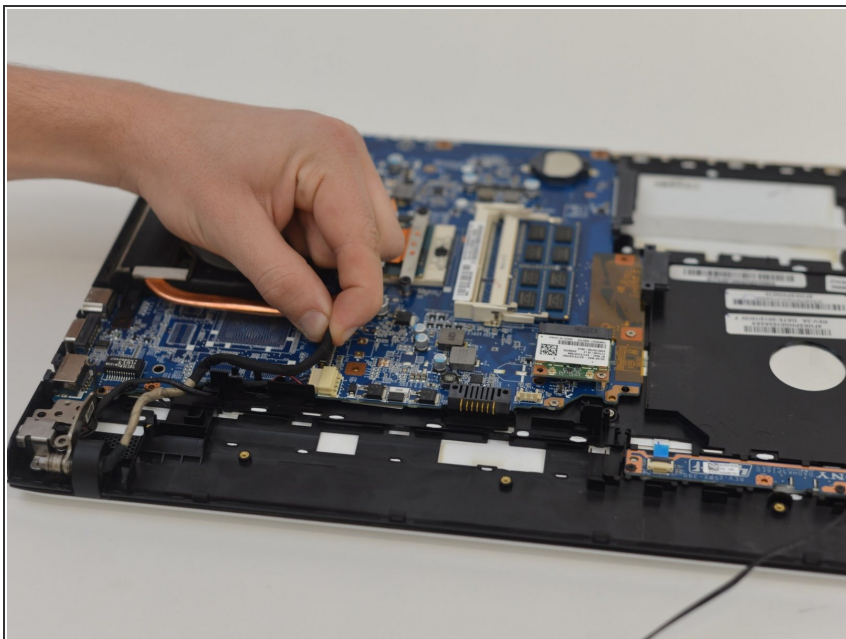
## Step 8



- Remove the other antenna wire.

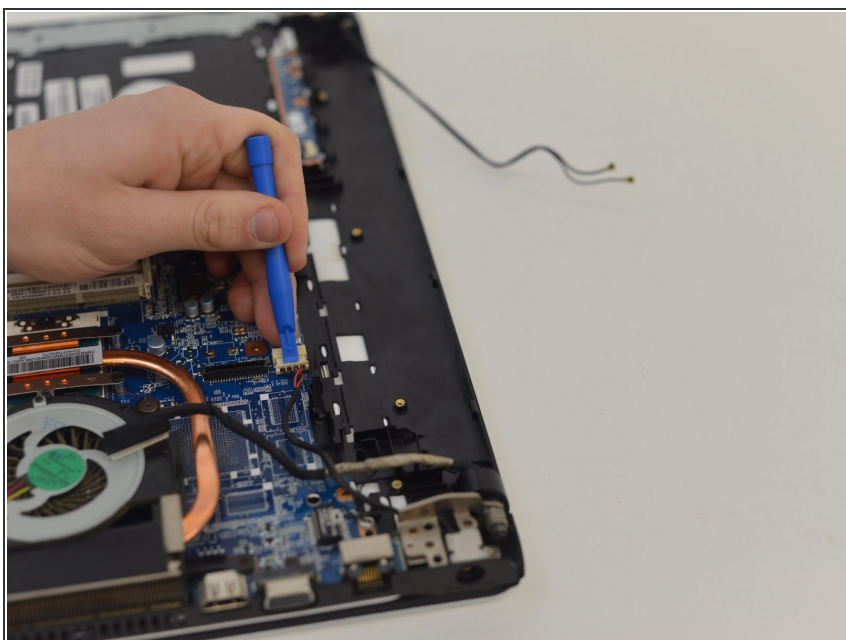


## Step 9



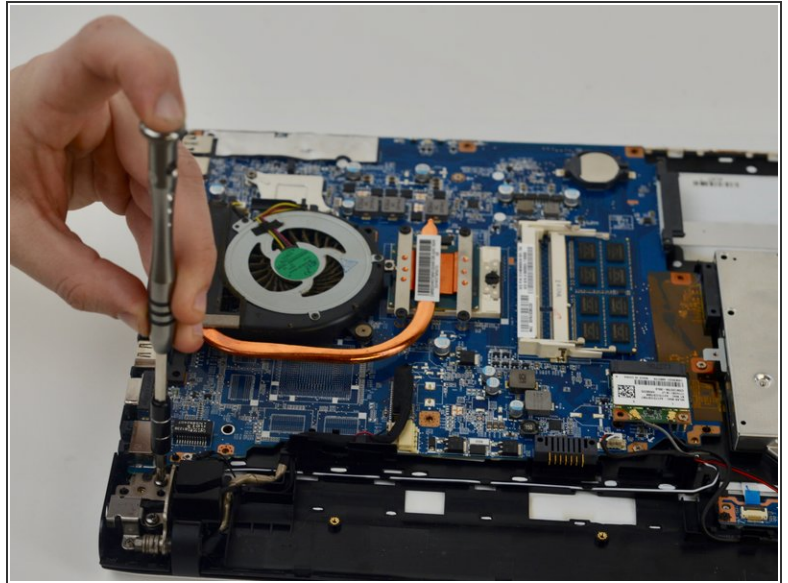
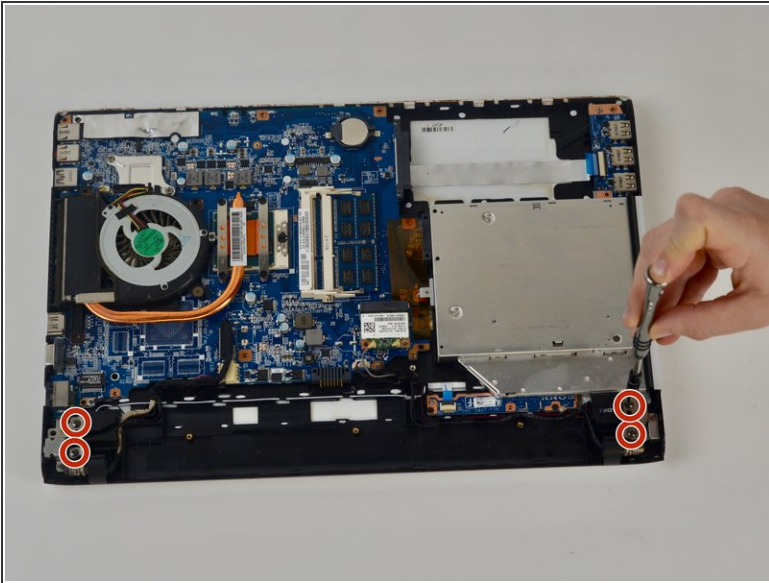
- Remove the display cable by pulling upwards.

## Step 10



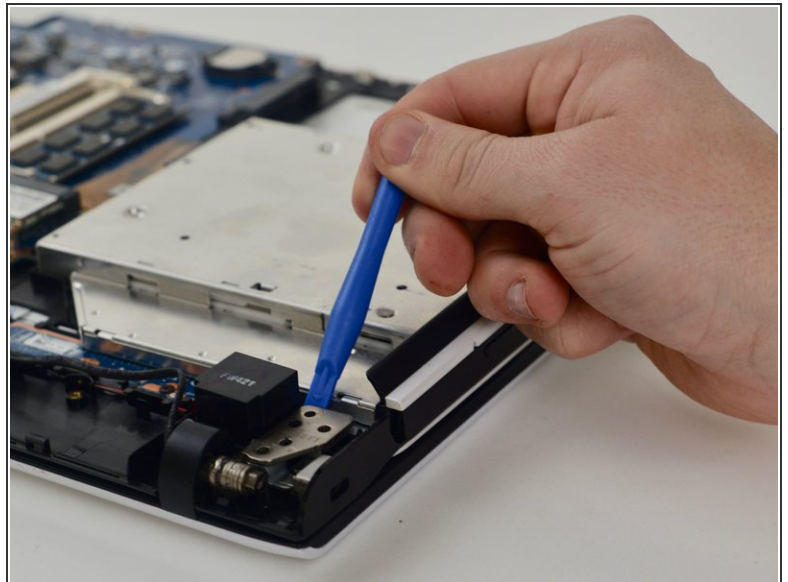
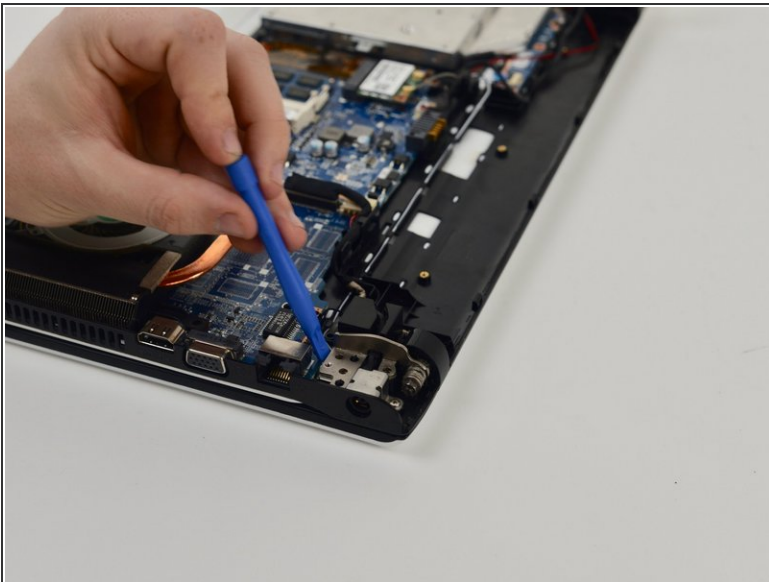
- Remove the power display cable with a plastic opening tool by pushing outwards.

## Step 11



- Remove 4 hinge screws with a Phillips #0 screwdriver.

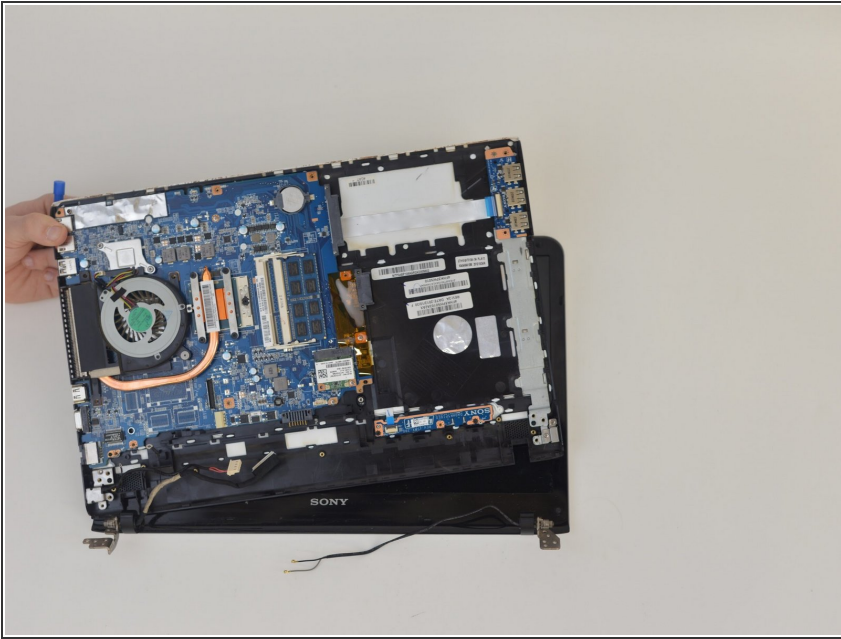
## Step 12



- Lift upward on the hinges with a plastic opening tool to release them.



## Step 13



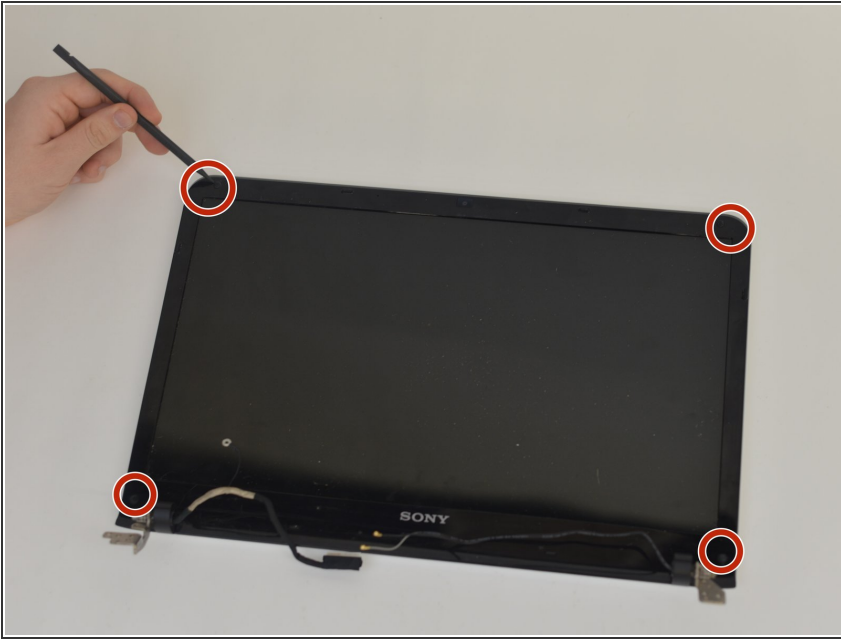
- Separate the bottom of the laptop from the monitor.

## Step 14



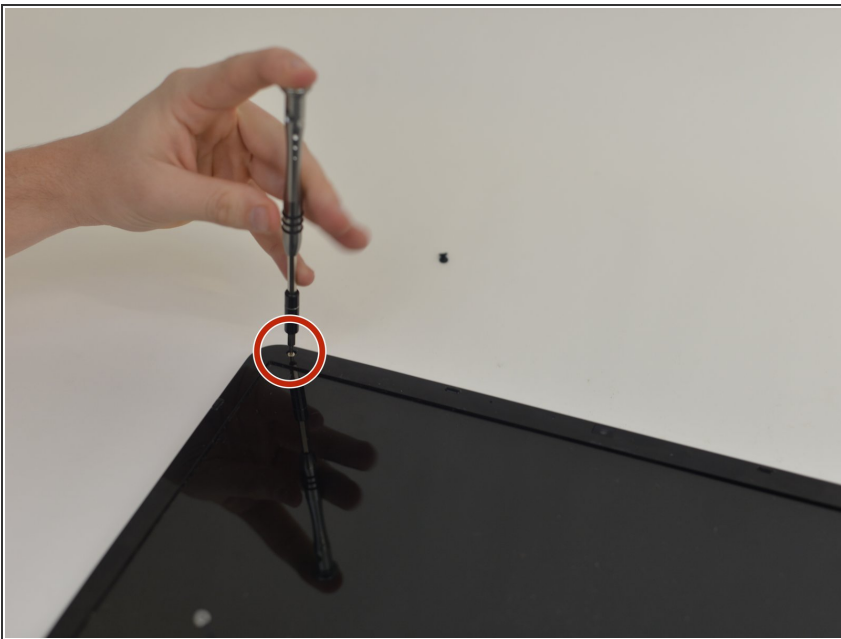
- Completely detach screen from the laptop.

## Step 15 — Webcam



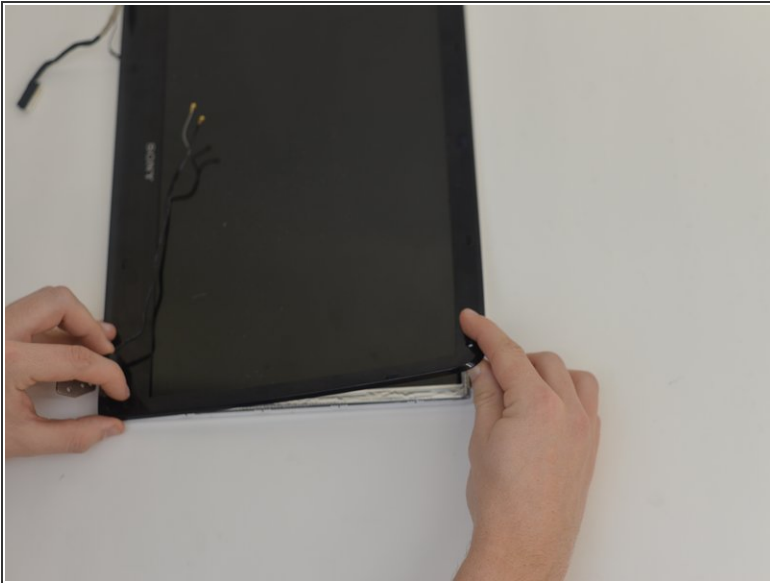
- Remove the rubber nipples to expose the screws using the pointed side of the spudger.

## Step 16



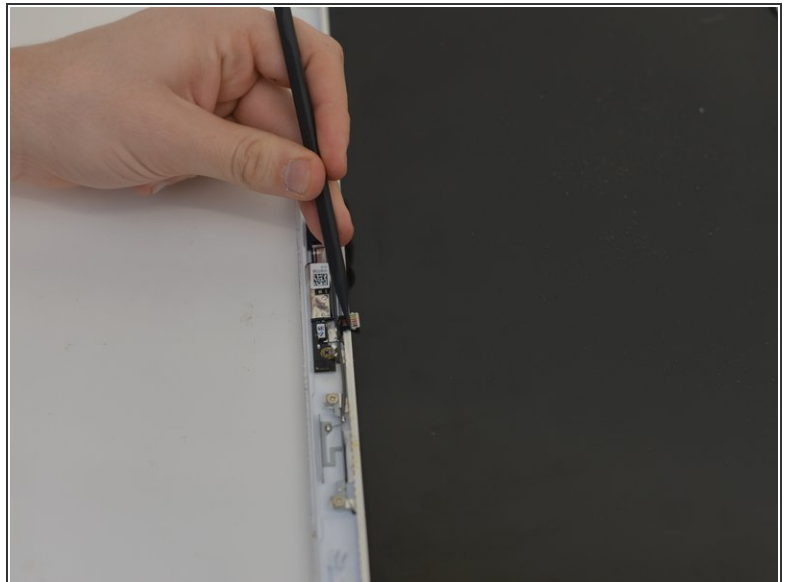
- Remove each of the screws revealed from the step below with a P00 screwdriver.

## Step 17



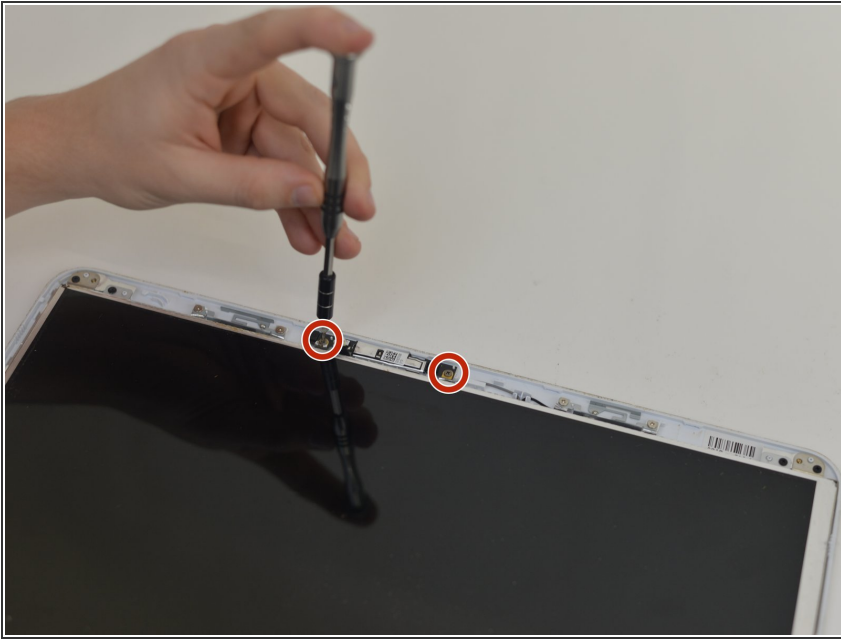
- Pop open display housing and follow the plastic to remove the screen.

## Step 18



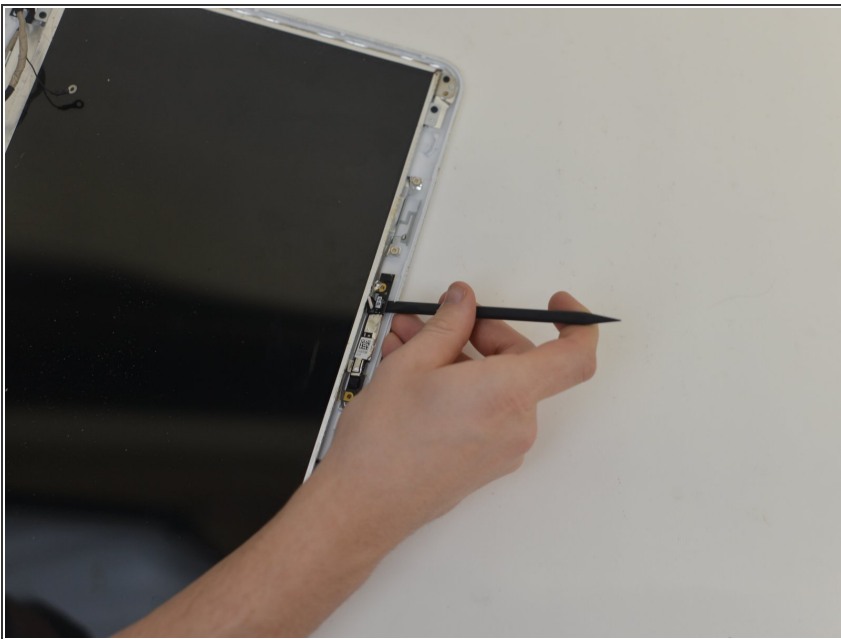
- Remove the camera cable with the spudger.

## Step 19



- Remove screws on both sides using a P000 screwdriver.

## Step 20



- Pop out the board using a spudger.



## Step 21



- The board is now removed.

To reassemble your device, follow these instructions in reverse order.