



# Samsung Gear VR With Controller Focus Wheel Replacement

How to replace the focus wheel on Samsung Gear VR with Controller.

Written By: Harumi Hokari



## INTRODUCTION

If the focus wheel on your Samsung Gear VR is not working, use this guide to replace the focus wheel. To complete this replacement, you will need an iFixit opening tool, metal spudger, and Phillips #000 screwdriver head.



### TOOLS:

- [Metal Spudger](#) (1)
  - [iFixit Opening Tools](#) (1)
  - [Phillips #000 Screwdriver](#) (1)
-

## Step 1 — Inner Mask



- Push the switch on the right-hand side of the device to separate the cover from the main body.
- Pull the cover away from the main device.

## Step 2



- Remove the four corner screw covers with a metal spudger.
- i** The screw covers fly off when removed, so make sure to keep track of them.



### Step 3



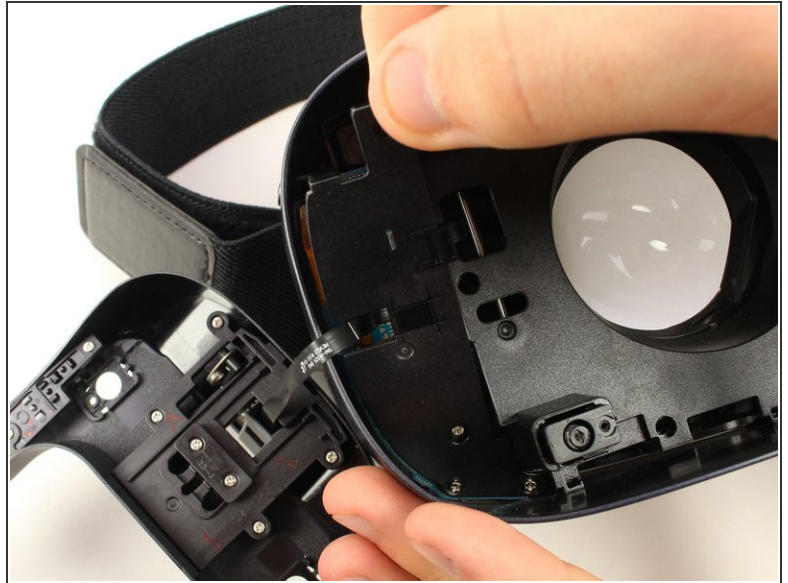
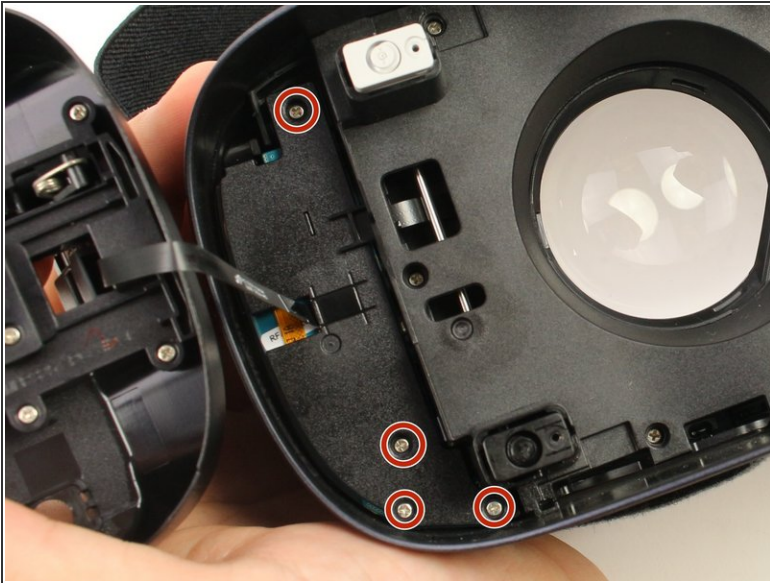
- Use a metal spudger to remove the screw cover centered at the top.

### Step 4



- Remove the six 5mm Phillips #000 screws to detach the front phone mount.
  - Lift the front phone mount up and to the left.
- ⚠ Remove the front phone mount carefully because there is a wire harness on the left side of the headset.

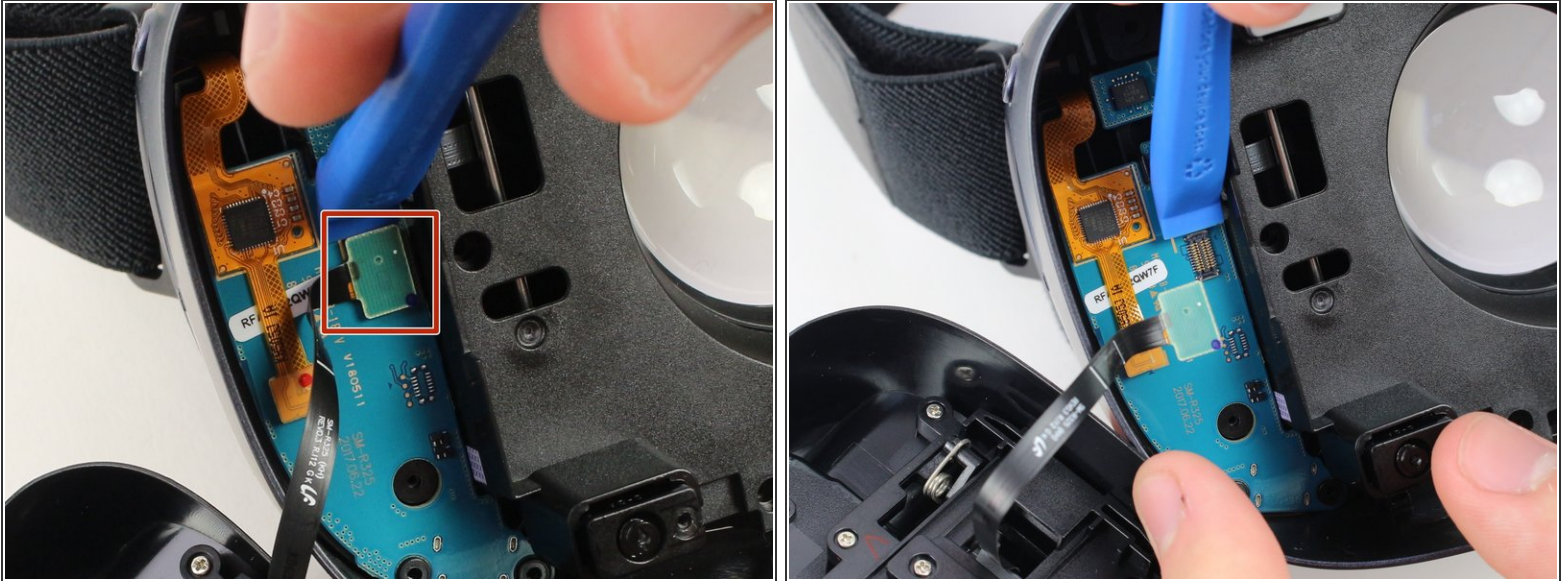
## Step 5



- Remove the four 5mm Phillips #000 screws that secure the plate on the left side of the headset.
- Pull the plate away from the motherboard gently.



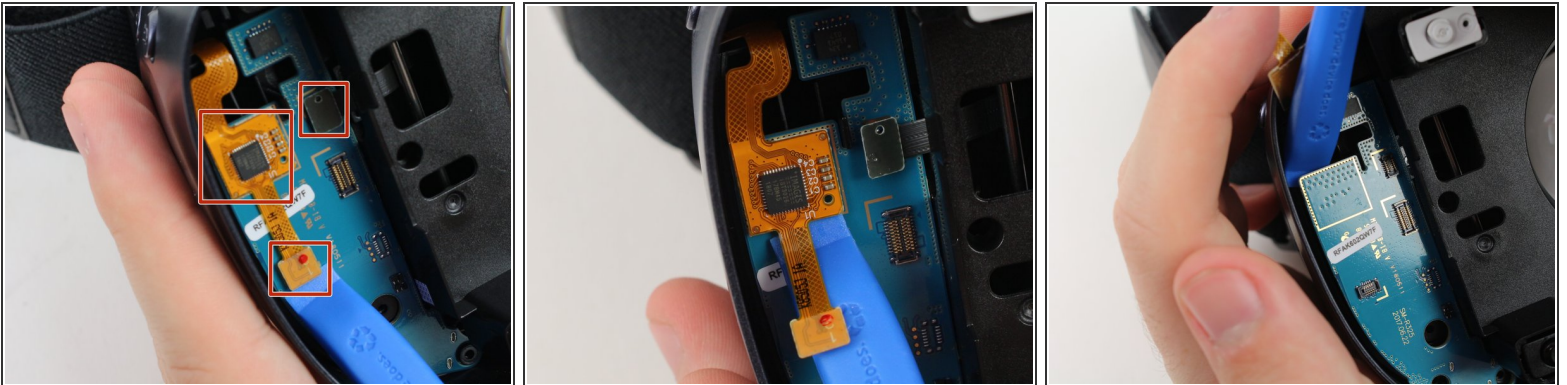
## Step 6



- Use the iFixit opening tool to remove the pop connector holding the wire harness to the motherboard.

**i** You can now completely remove the front phone mount from the headset.

## Step 7



- Remove the rest of the pop connectors on the motherboard using the iFixit opening tool.
- Pry at the top of the motherboard with the iFixit opening tool to remove the motherboard.

**i** The largest pop connector may require more effort to remove.

**!** Make sure that nothing is connected to the motherboard before you pull it out.

## Step 8



- Remove the eight 5mm Phillips #000 screws on the inner mask.
- Gently separate the inner mask from the headset by pulling the mask from the inner sides of the lens sockets.

## Step 9 — Focus Wheel



- Remove the one 5mm Phillips #000 screw.
- (i) The screw for the focus wheel has a larger head than the rest of the screws.
- Separate the focus wheel from the headset using your fingers.

To reassemble your device, follow these instructions in reverse order.