



# Samsung Gear VR With Controller Lens Replacement

How to replace the lenses on your Samsung Gear VR headset.

Written By: Jake Criscione



# INTRODUCTION

If the lenses on your Samsung Gear VR with Controller are blurry, scratched, or damaged, use this guide to replace one or both of your lenses. For this guide, you will need a plastic opening tool, metal spudger, and Phillips #000 screwdriver head.



## TOOLS:

- [Metal Spudger](#) (1)
  - [iFixit Opening Tools](#) (1)
  - [Phillips #000 Screwdriver](#) (1)
-

## Step 1 — Inner Mask



- Push the switch on the right-hand side of the device to separate the cover from the main body.
- Pull the cover away from the main device.

## Step 2



- Remove the four corner screw covers with a metal spudger.
- i** The screw covers fly off when removed, so make sure to keep track of them.



### Step 3



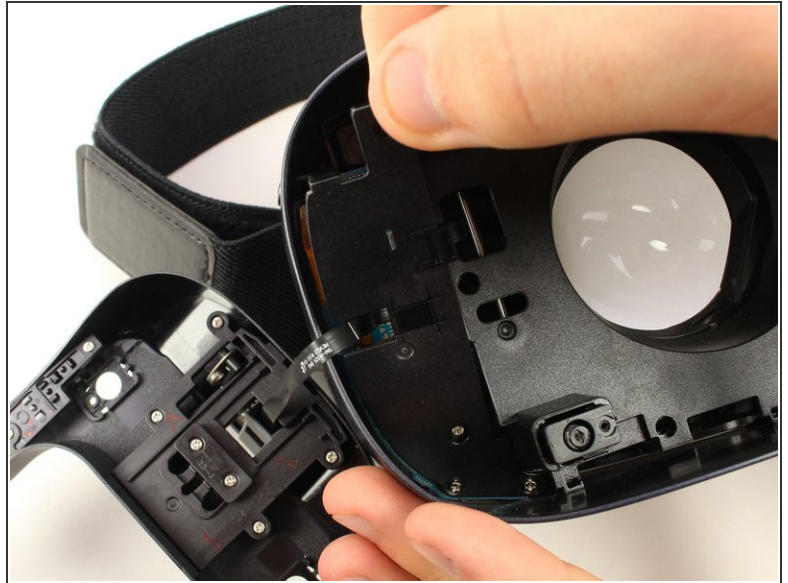
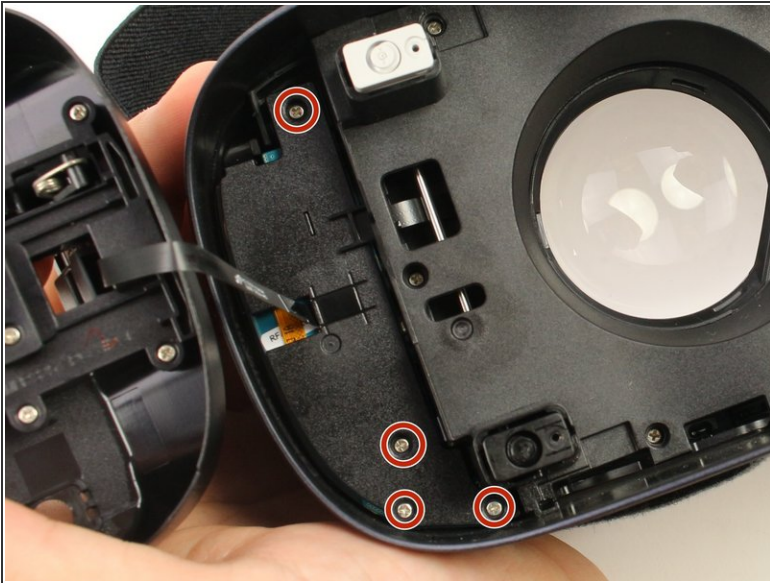
- Use a metal spudger to remove the screw cover centered at the top.

### Step 4



- Remove the six 5mm Phillips #000 screws to detach the front phone mount.
  - Lift the front phone mount up and to the left.
- ⚠ Remove the front phone mount carefully because there is a wire harness on the left side of the headset.

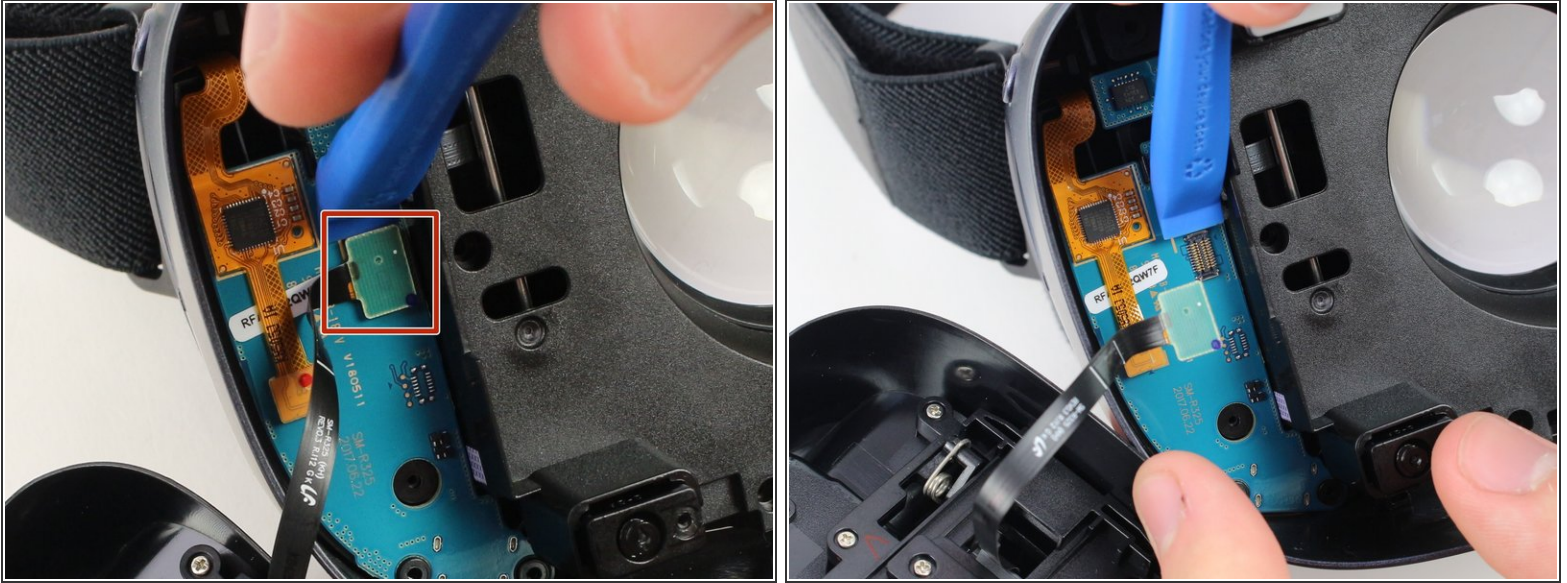
## Step 5



- Remove the four 5mm Phillips #000 screws that secure the plate on the left side of the headset.
- Pull the plate away from the motherboard gently.



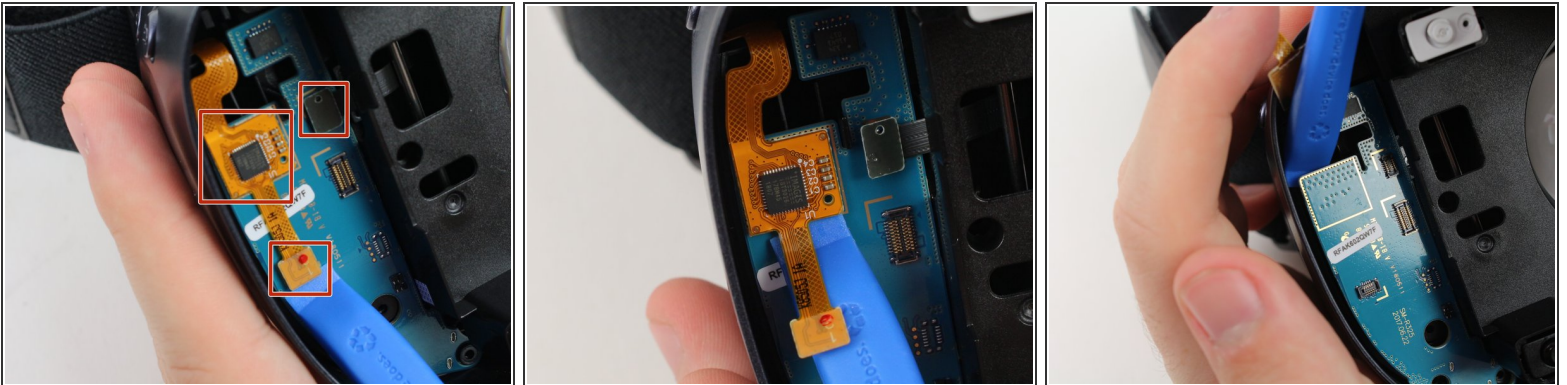
## Step 6



- Use the iFixit opening tool to remove the pop connector holding the wire harness to the motherboard.

**i** You can now completely remove the front phone mount from the headset.

## Step 7



- Remove the rest of the pop connectors on the motherboard using the iFixit opening tool.
- Pry at the top of the motherboard with the iFixit opening tool to remove the motherboard.

**i** The largest pop connector may require more effort to remove.

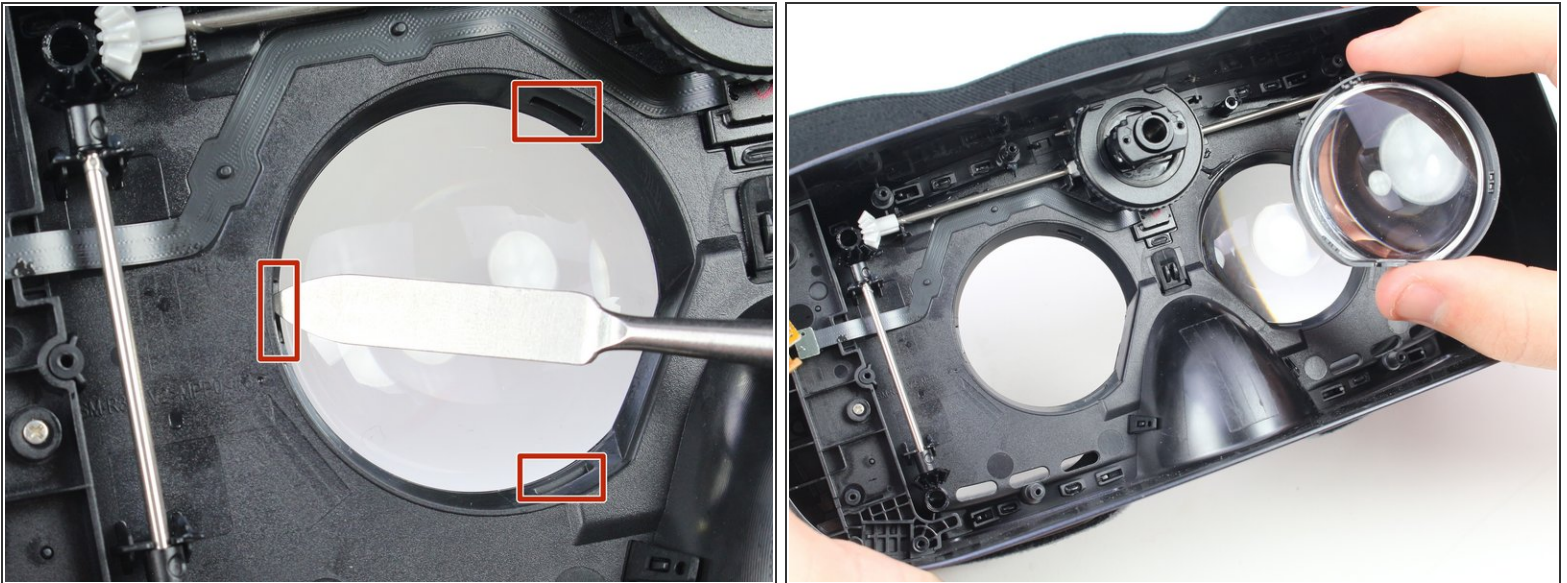
**!** Make sure that nothing is connected to the motherboard before you pull it out.

## Step 8



- Remove the eight 5mm Phillips #000 screws on the inner mask.
- Gently separate the inner mask from the headset by pulling the mask from the inner sides of the lens sockets.

## Step 9 — Lens



- Use the metal spudger to press on the three tabs around each of the sockets.
- ⚠ Press the tabs gently to prevent damaging them.
- Pull out the lenses with your fingers to remove them from the mask.

To reassemble your device, follow these instructions in reverse order.