



# Lenovo Essential G555-0873 Bottom Panel Replacement

This guide describes how to remove the bottom panel.

Written By: Michael Elledge



---

## INTRODUCTION

Use this guide to remove the bottom panel of the Lenovo Essential G555-0873, allowing you access to the rest of the hardware. The only tool you need for this step is the screwdriver listed below.

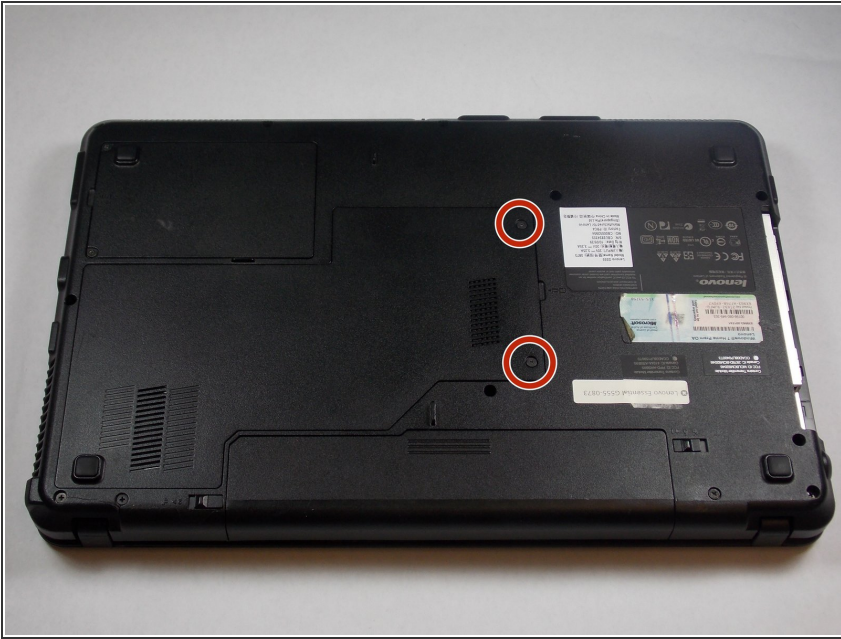
---



### TOOLS:

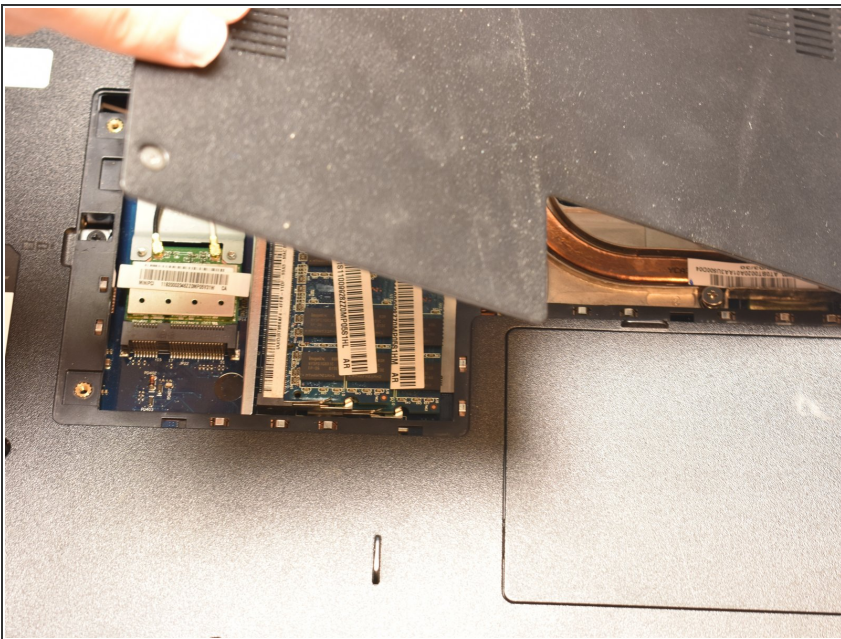
- [Phillips #0 Screwdriver](#) (1)
-

## Step 1 — Bottom Panel



- Unscrew the two 5.1 mm screws that secure the bottom cover.
- ⓘ Note that the screws will not come all the way out of the sockets.

## Step 2



- Lift from the notch until the back panel comes up.

To reassemble your device, follow these instructions in reverse order.