



Samsung Galaxy J7 Front Facing Camera Replacement

How to replace front facing camera on the Samsung Galaxy J7.

Written By: Justin Thompson



Step 1 — Back Cover



- Remove the back of the device by pulling on the tab in the top left.

Step 2 — Midframe



- Using the Phillips #000 screwdriver, remove ten 4.2 mm screws.

Step 3



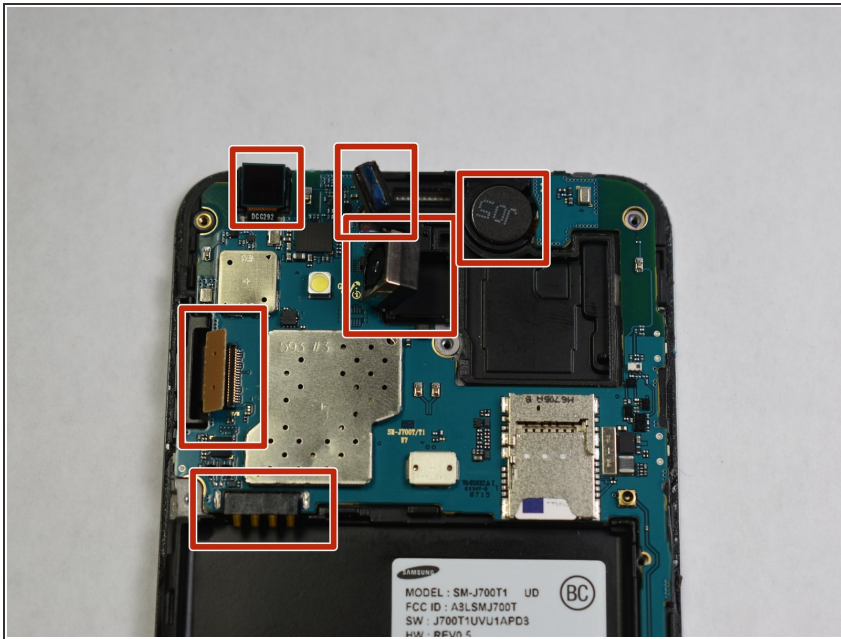
- Lift up the back of the device with the iFixit opening tool and disconnect it from the front.

Step 4 — Front Facing Camera



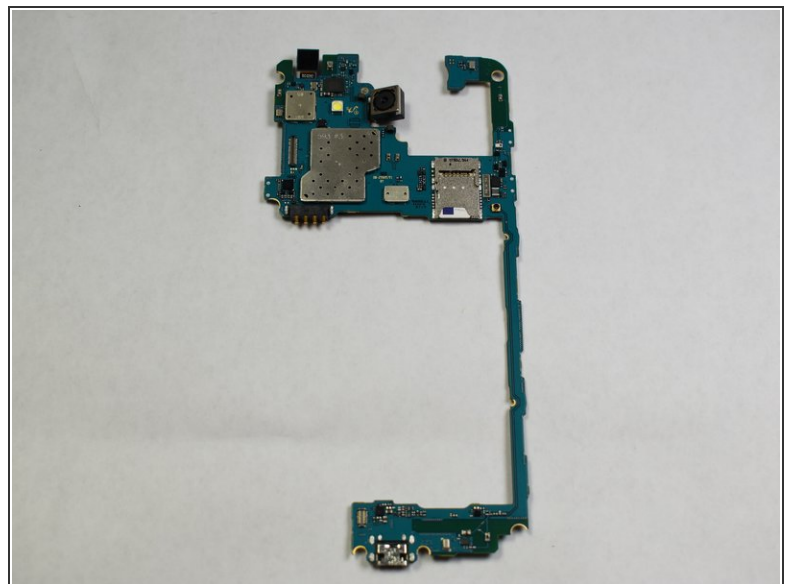
- Remove single screw from back of device. This is the only screw that must be removed to take off this piece.

Step 5



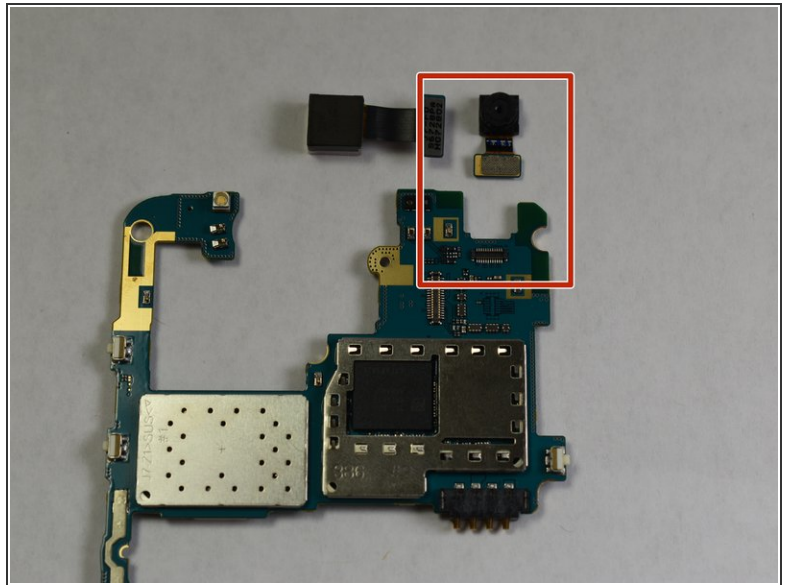
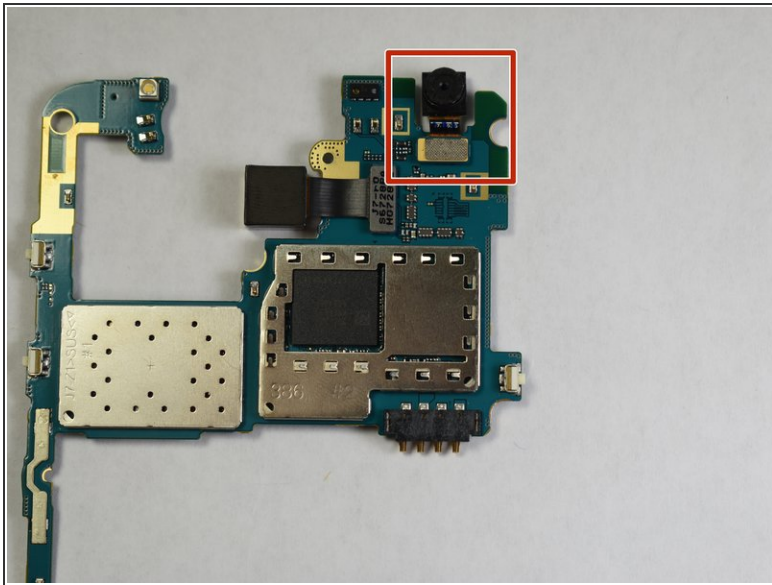
- Make sure to pull up all of these parts in order to properly take off the next piece.

Step 6



- Pull the blue/green piece away from the black piece. They should not need any force to be removed. The next step will deal with using the green/blue piece from the second picture.

Step 7



- Flip over the piece (180 degrees). Remove the boxed out piece. This is the front facing camera.

To reassemble your device, follow these instructions in reverse order.