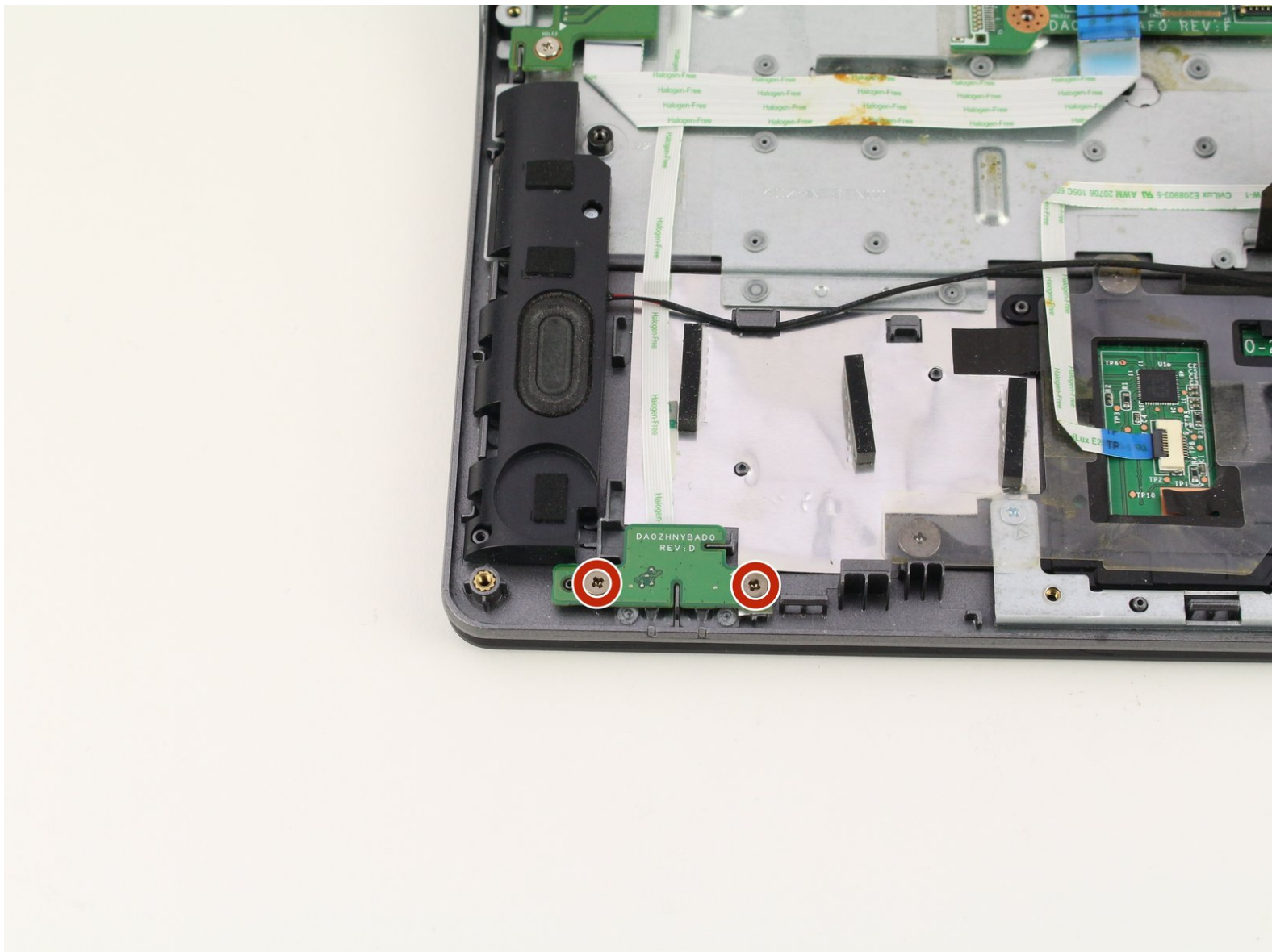




Acer Chromebook C720-2827 LED PCB Replacement

How to replace the Acer Chromebook LED PCB. LED PCB stands for light emitting diode printed control board and controls the status indicator lights.

Written By: Sarah Westberg



INTRODUCTION

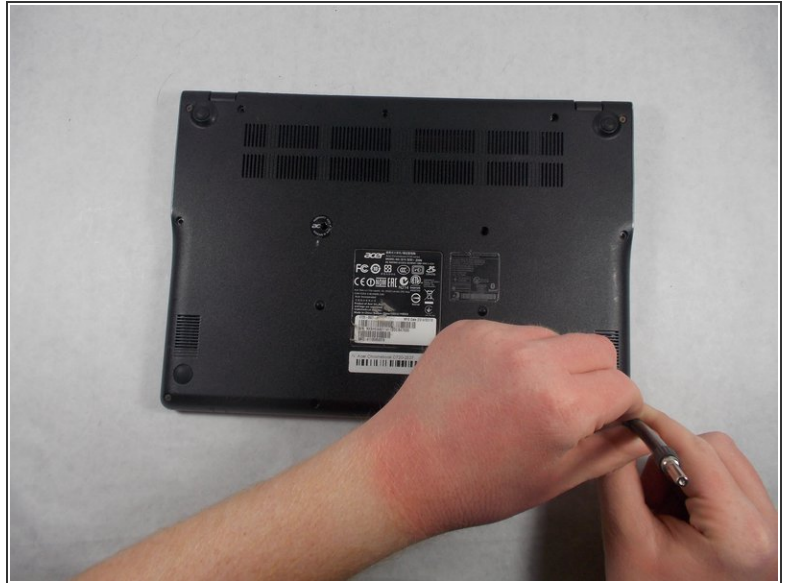
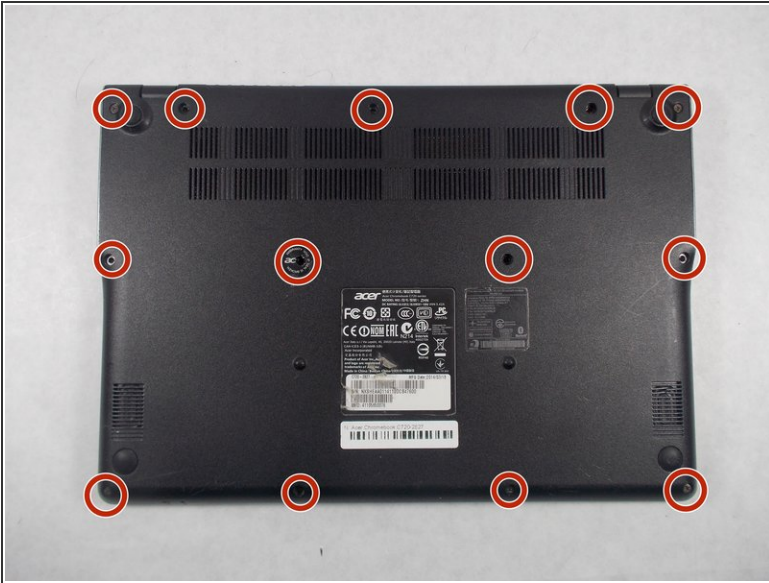
This guide will show you how to replace you Acer Chromebook C720-2827 LED PCB. The LED PCB is the printed control board controlling the two status LEDs (light emitting diode) on the bottom right edge of the laptop. Replace it if these two LEDs cease lighting up while the device is charging.



TOOLS:

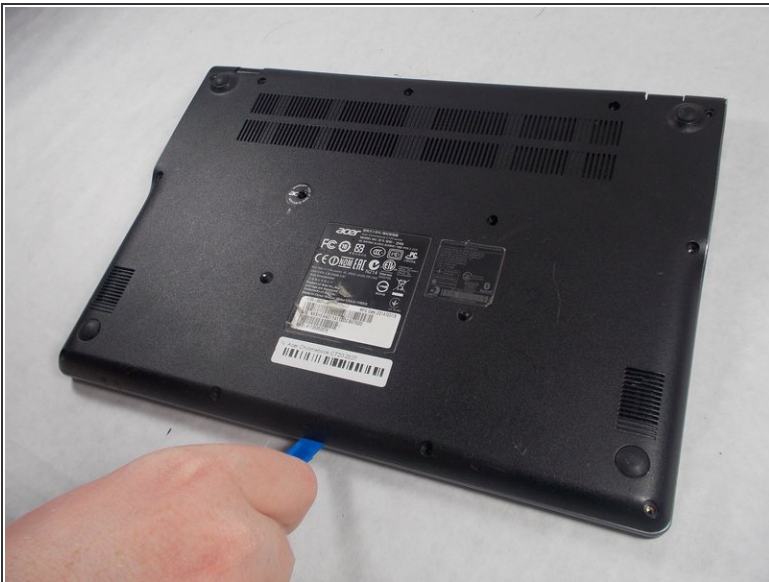
- [iFixit Opening Tool](#) (1)
 - [Phillips #1 Screwdriver](#) (1)
 - [Spudger](#) (1)
-

Step 1 — Back Panel Assembly



- Remove the thirteen 6.0mm screws on the back panel using your Phillips #1 screwdriver.

Step 2



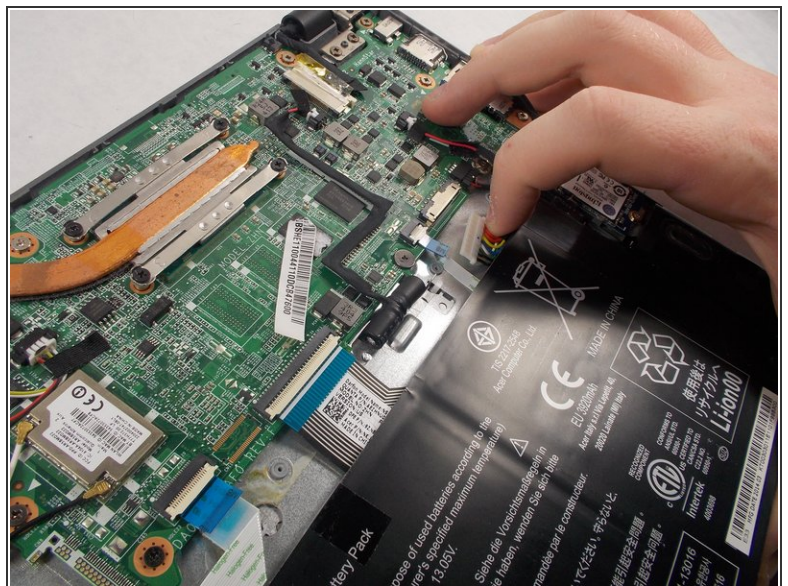
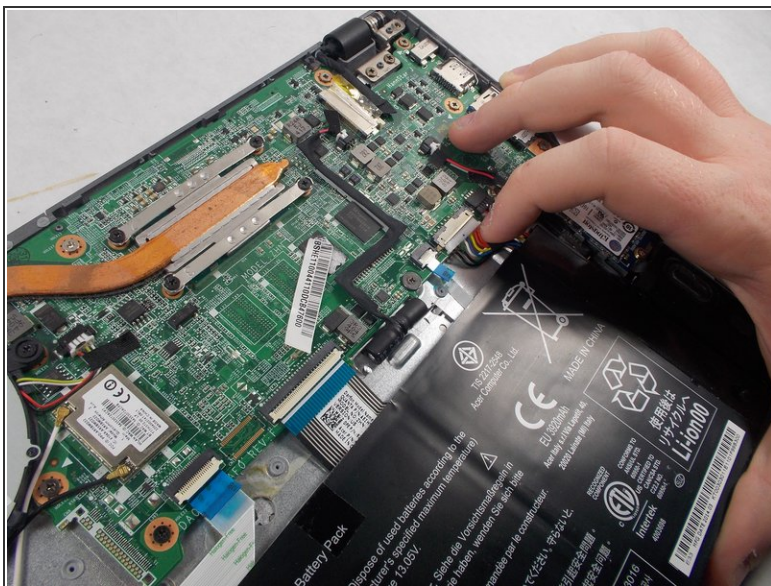
- Pry the back panel open with the plastic opening tool.

Step 3 — Battery



- Remove the two 6.0mm screws securing the battery with your Phillips #1 screwdriver.

Step 4



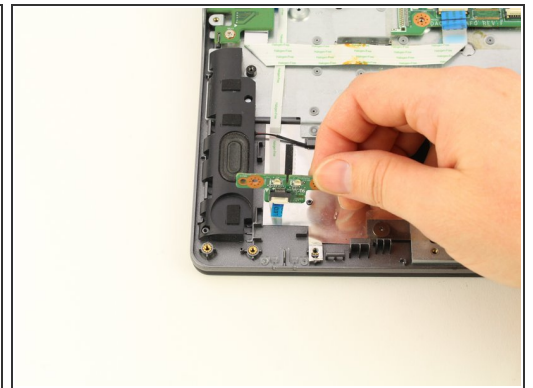
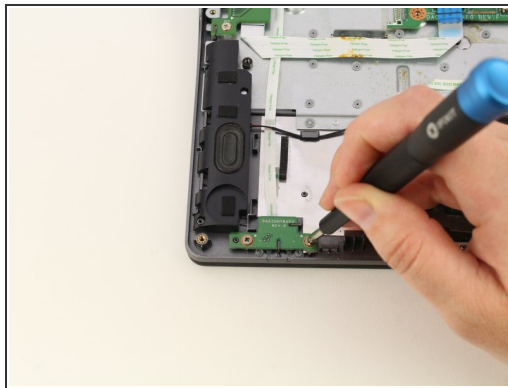
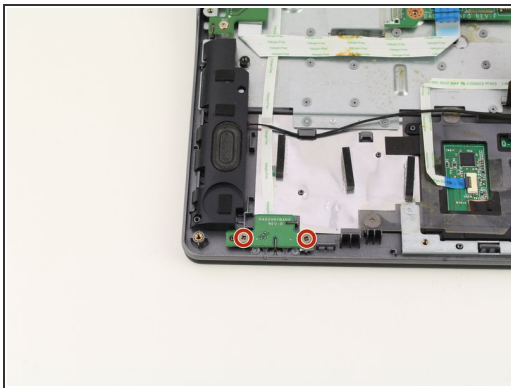
- Carefully pull out the battery wire connected to the battery port.

Step 5



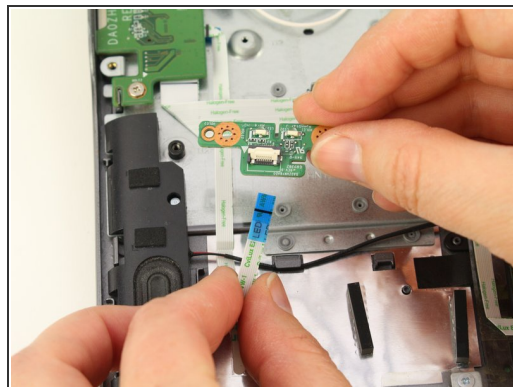
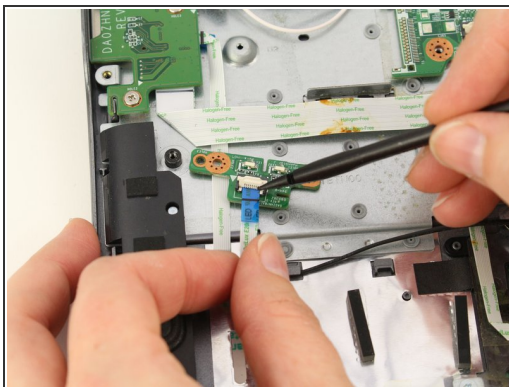
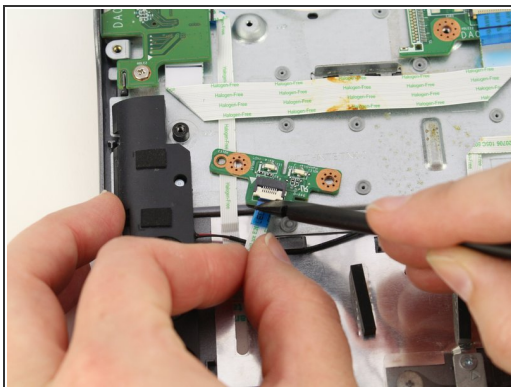
- Slowly lift the battery to remove it from the Chromebook.

Step 6 — LED PCB



- Use the Phillips #1 screwdriver to remove the two 3.1mm screws from the LED PCB.
 - Lift the LED PCB up with your fingers and flip it over revealing the ZIF connector.
- ⚠ The LED PCB is still tethered to the daughterboard via a ribbon cable so be sure not to yank it out or it could cause damage to the cable or its connectors.

Step 7



- Set the LED PCB down and use your spudger to flip up the white bar of the ZIF connector.
- Pull the ribbon cable out with your fingers.

To reassemble your device, follow these instructions in reverse order.