

Written By: Austin Blakely



INTRODUCTION

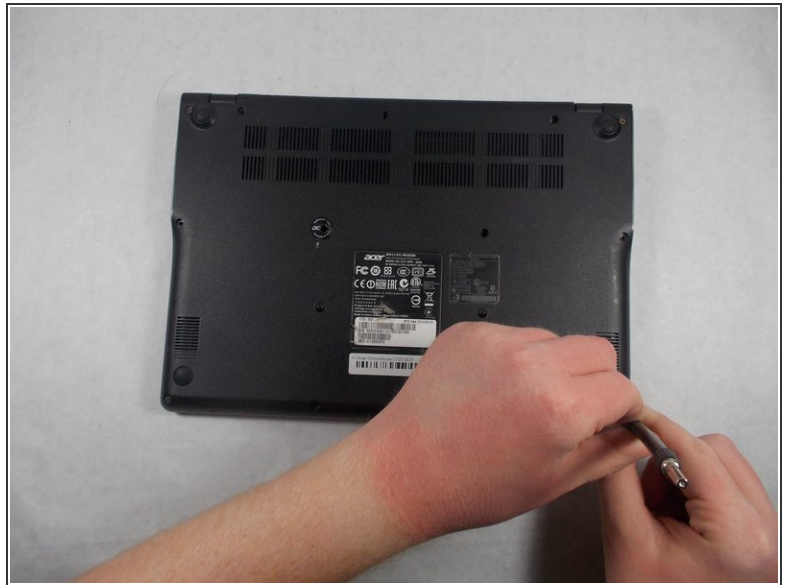
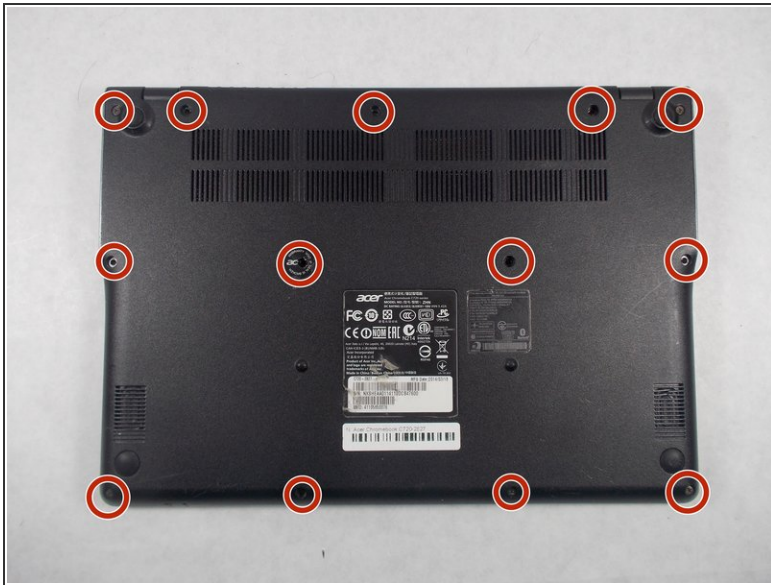
Use this guide to replace the keyboard on your Acer Chromebook C720-2827. The keyboard is essentially built into the case, so you aren't as much removing the keyboard as disassembling your computer and reassembling it around a new keyboard. This guide will require removal of all components, so strap in for a ride.



TOOLS:

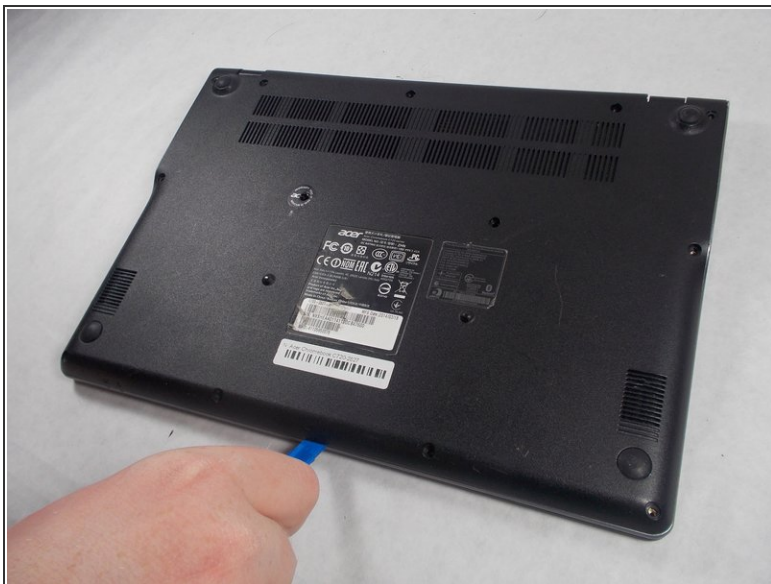
- [iFixit Opening Tool](#) (1)
 - [Phillips #1 Screwdriver](#) (1)
 - [Spudger](#) (1)
-

Step 1 — Back Panel Assembly



- Remove the thirteen 6.0mm screws on the back panel using your Phillips #1 screwdriver.

Step 2



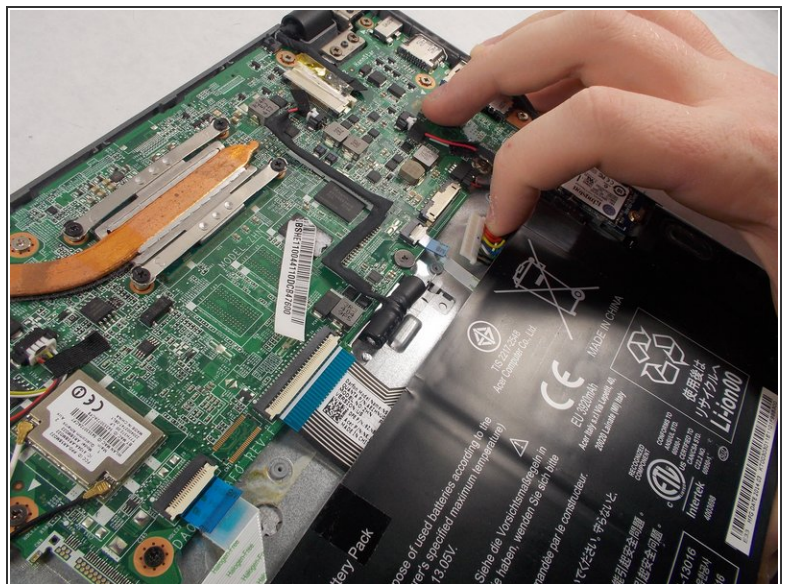
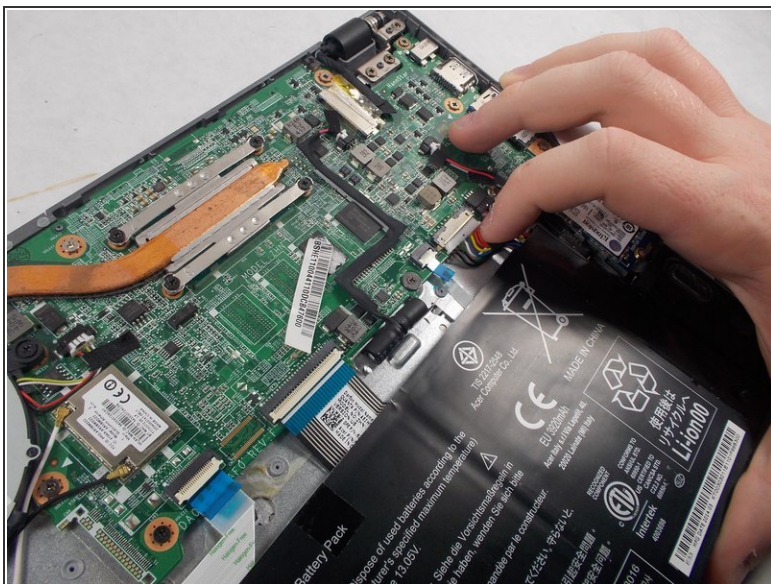
- Pry the back panel open with the plastic opening tool.

Step 3 — Battery



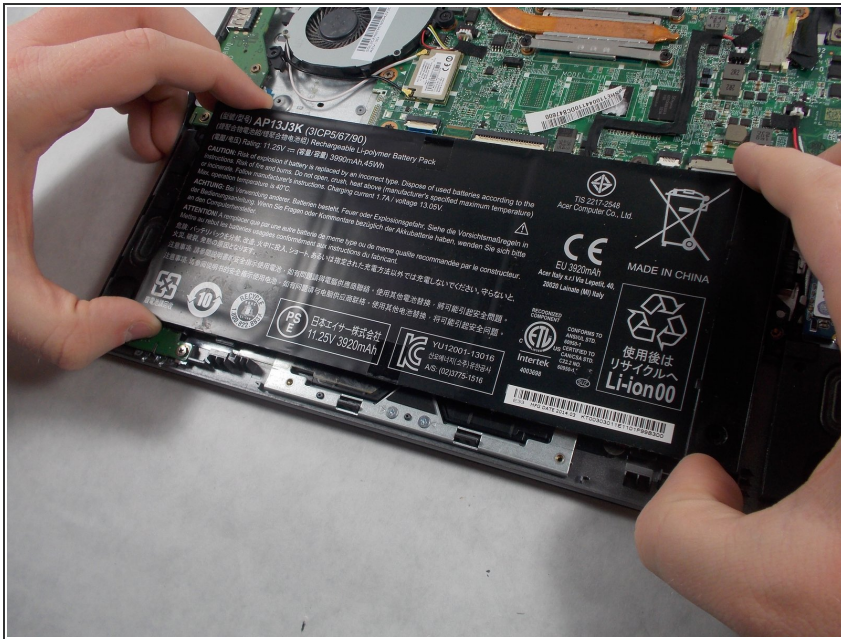
- Remove the two 6.0mm screws securing the battery with your Phillips #1 screwdriver.

Step 4



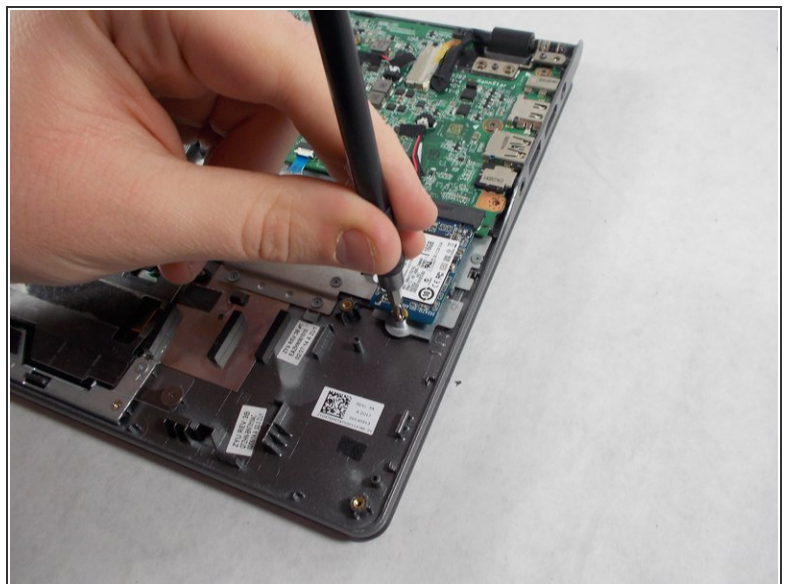
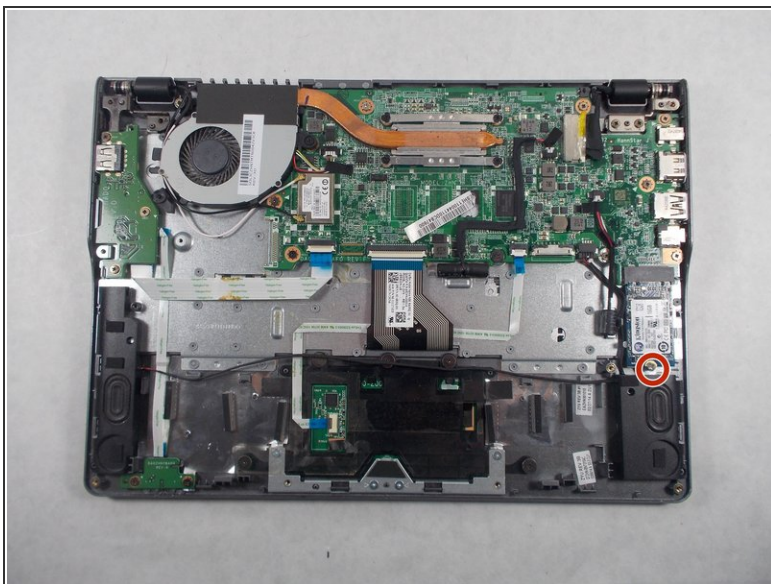
- Carefully pull out the battery wire connected to the battery port.

Step 5



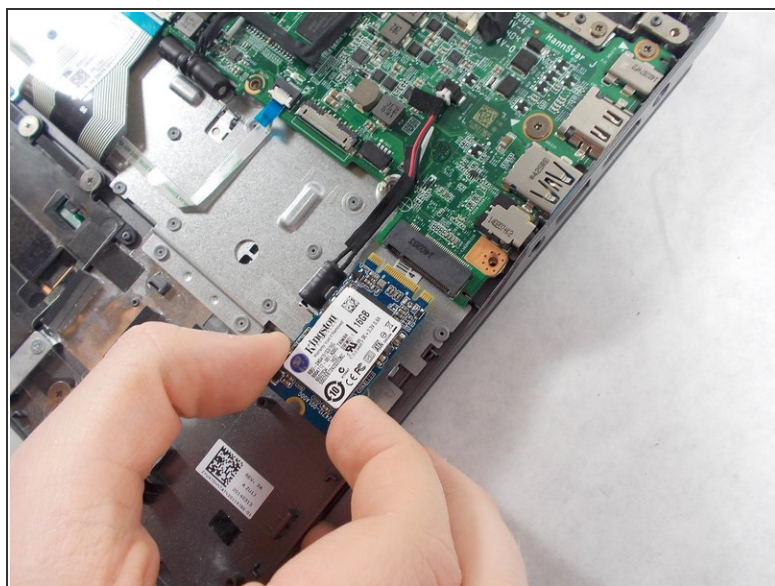
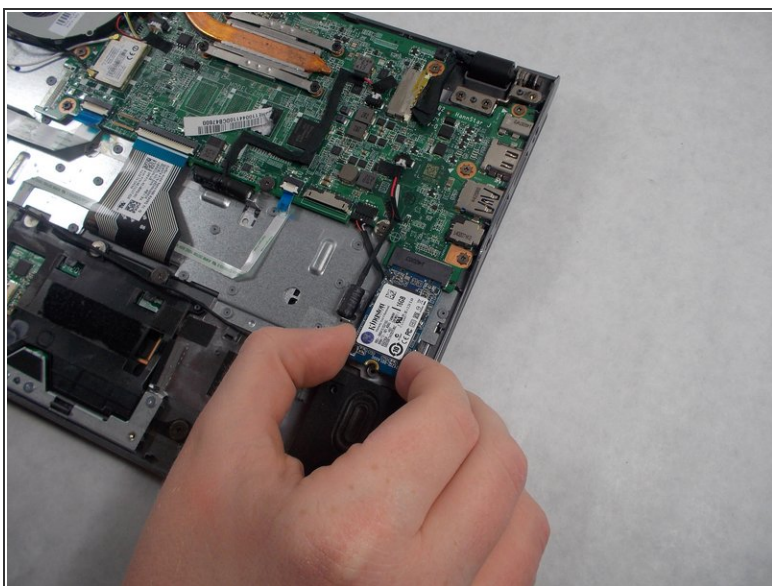
- Slowly lift the battery to remove it from the Chromebook.

Step 6 — Solid State Drive



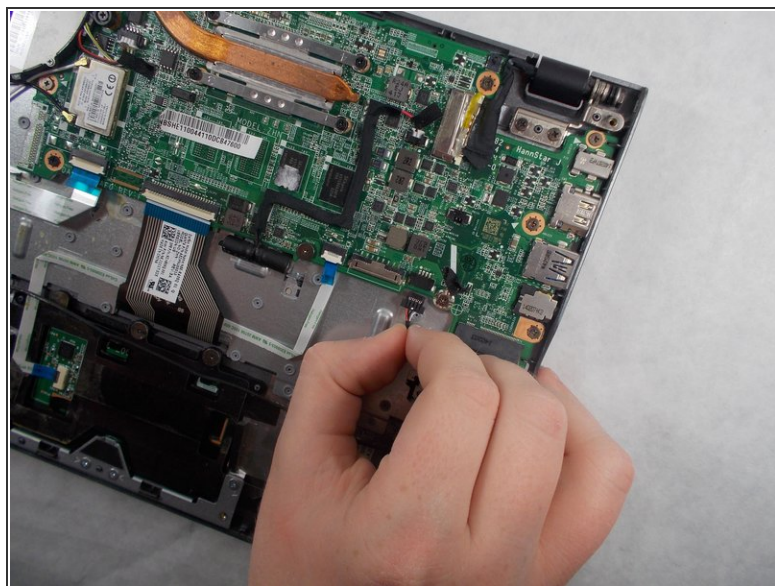
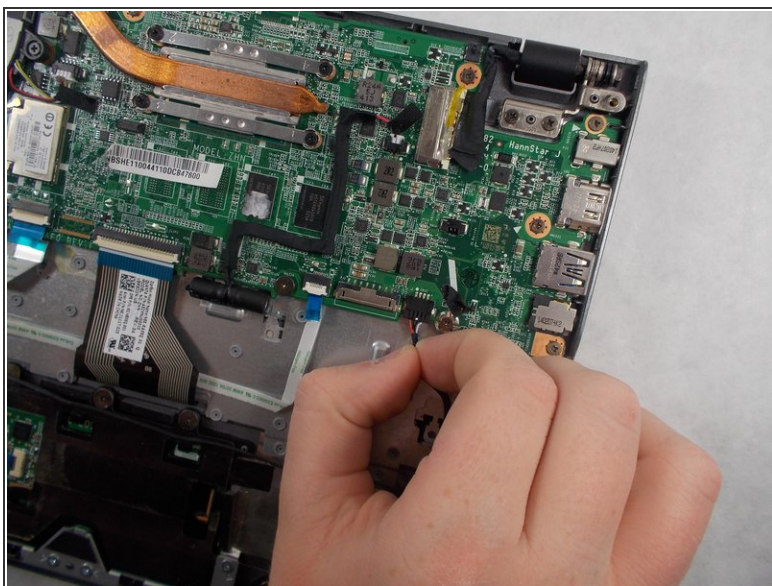
- Remove the single 3.0mm screw securing the solid state drive using a Phillips #1 screwdriver.

Step 7



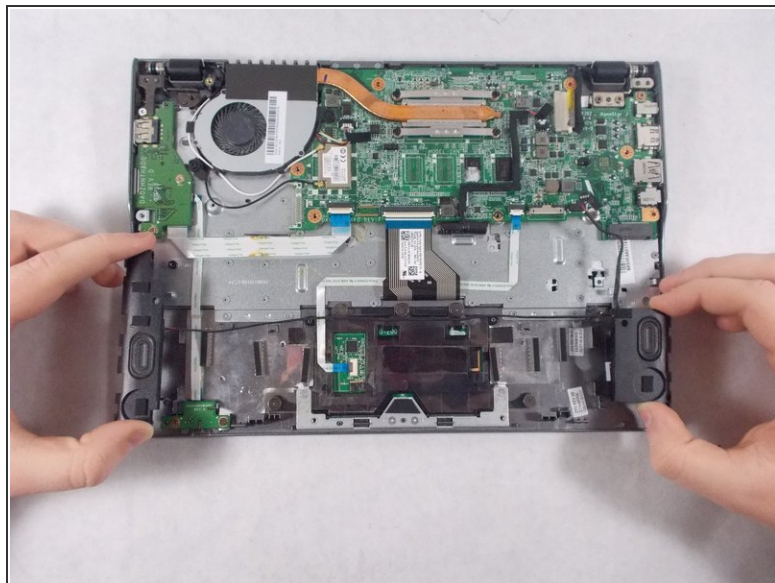
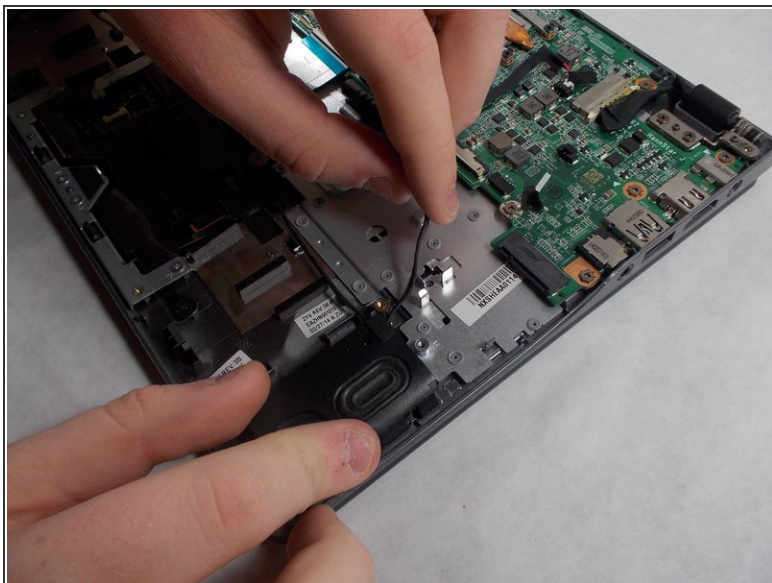
- Carefully pull out the solid state drive using two fingers.

Step 8 — Speakers



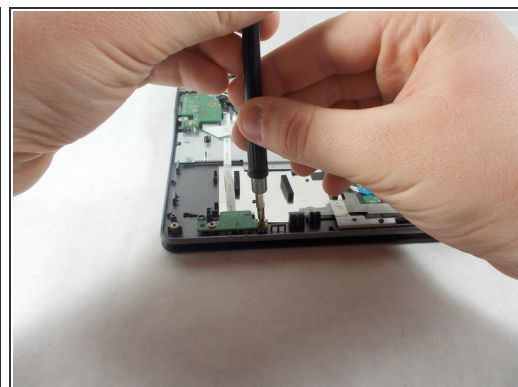
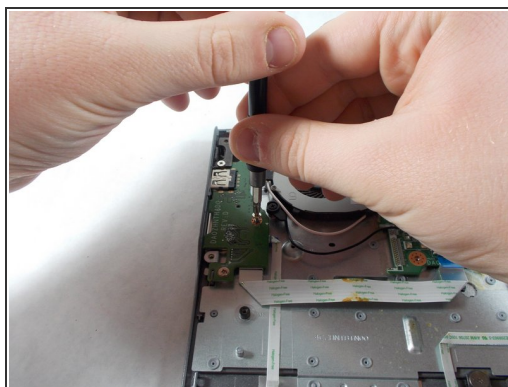
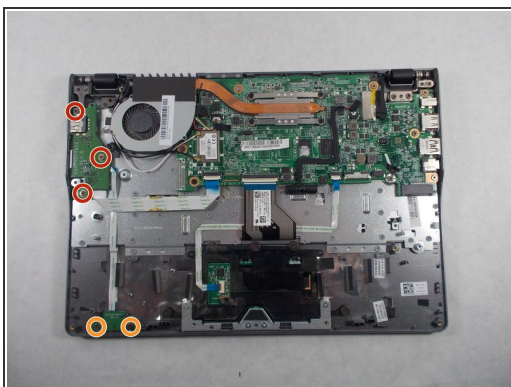
- Unplug the speaker wire from the motherboard.

Step 9



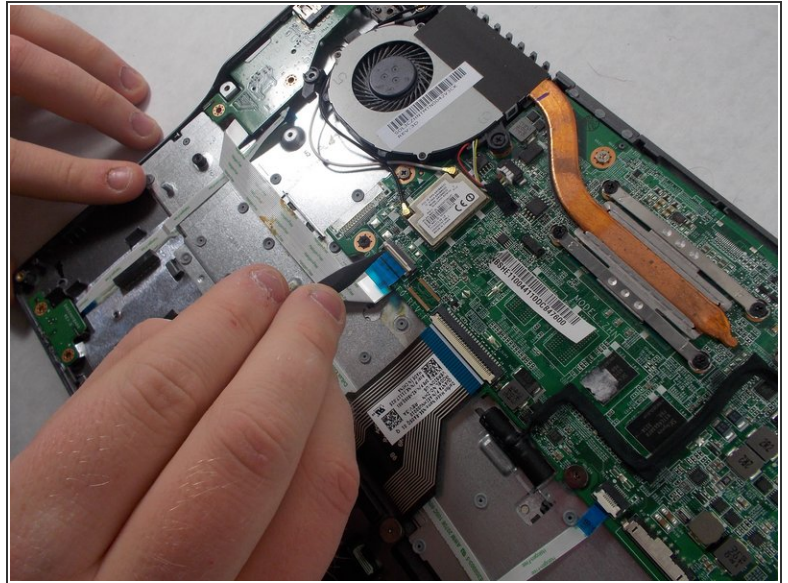
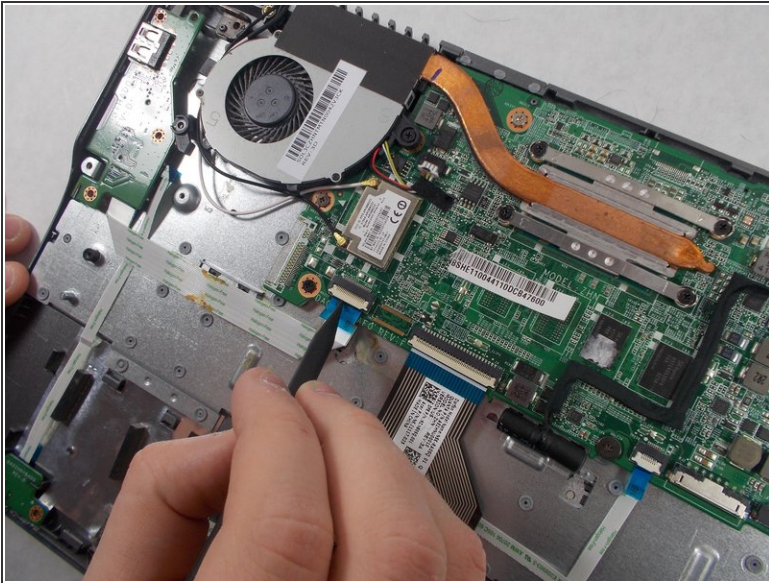
- Carefully pull out the speakers from each side of the Chromebook.

Step 10 — USB Port/SD Card Reader



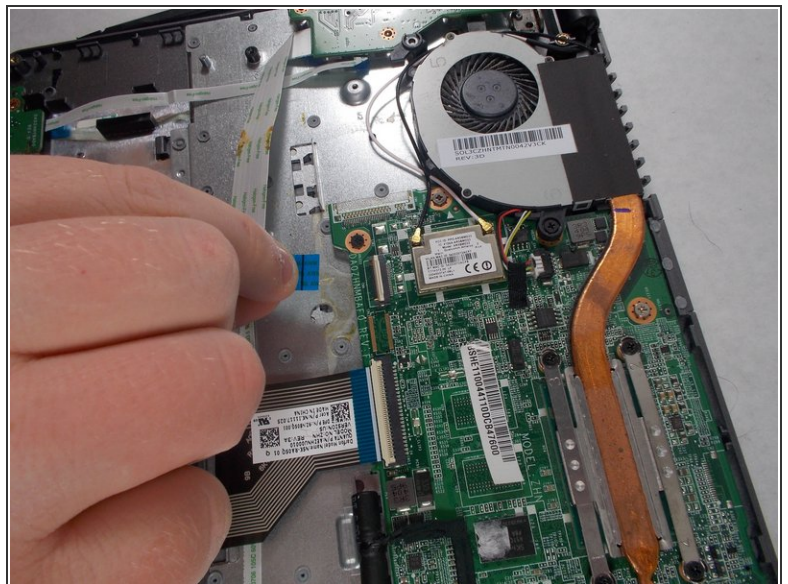
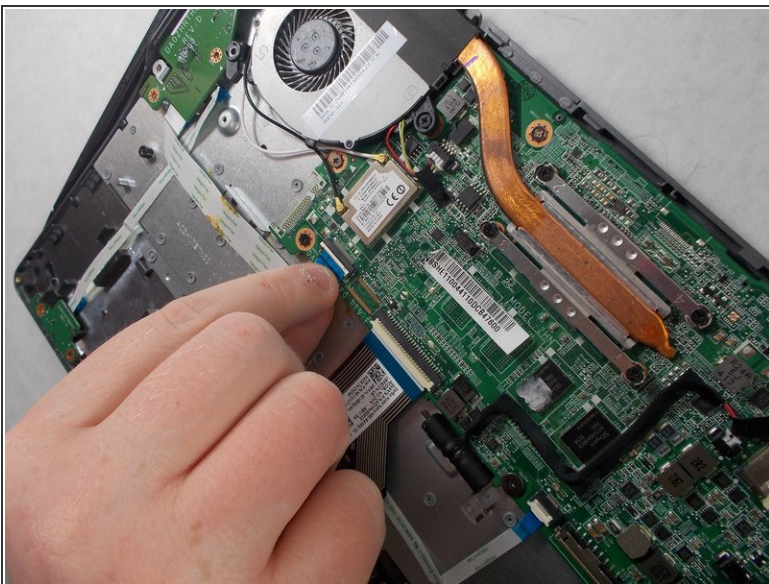
- Remove the three 6.0mm screws using the Phillips #1 screwdriver.
- Remove the two 3.0mm screws using the Phillips #1 screwdriver.

Step 11



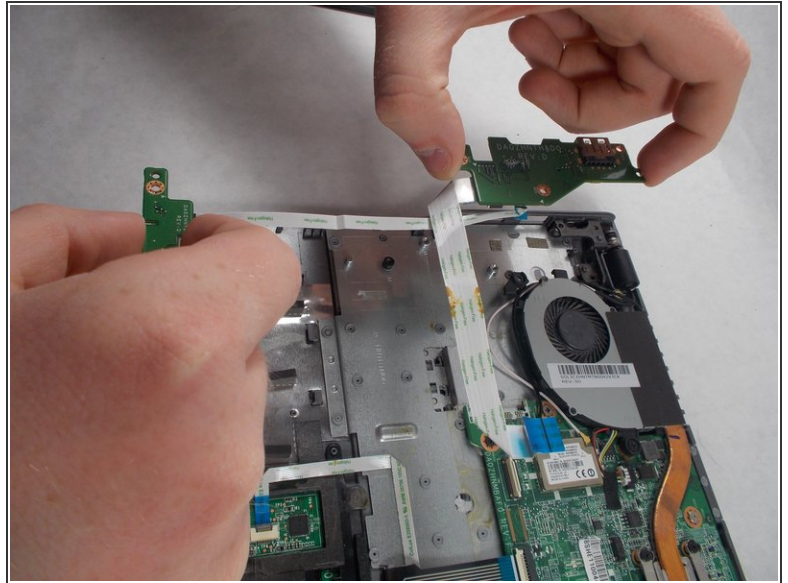
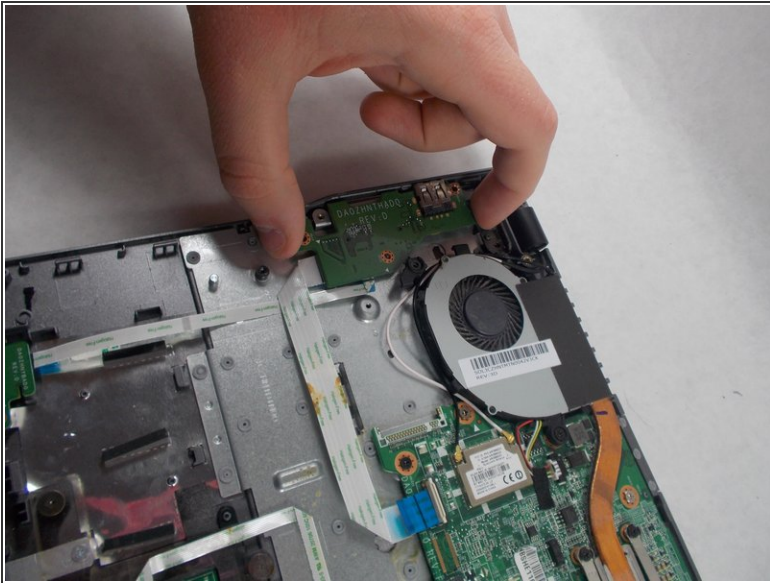
- Position the spudger under the switch that connects the ribbon cable to the motherboard.
- Flick the spudger up to flip the switch up.

Step 12



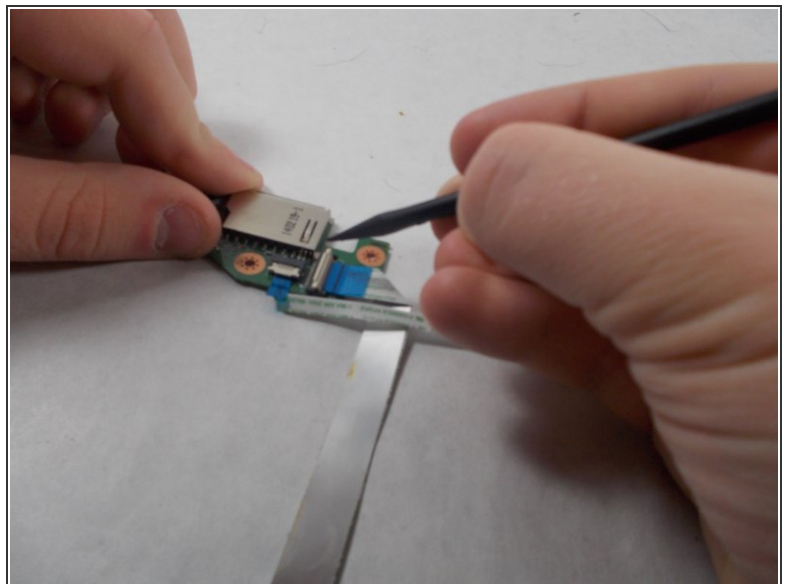
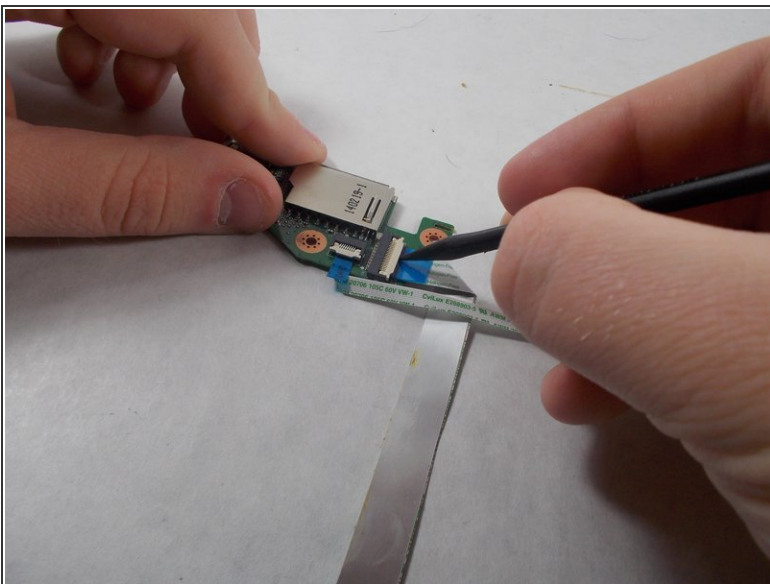
- Pull the blue tab on the ribbon cable to remove it.

Step 13



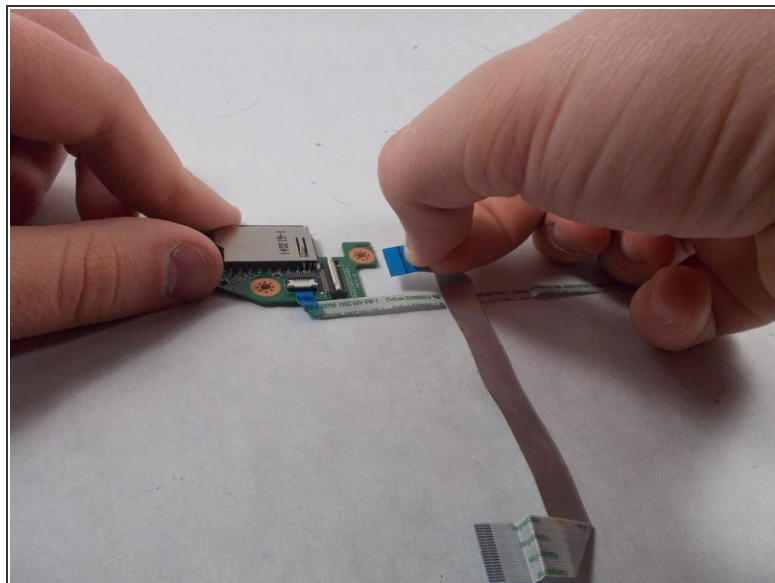
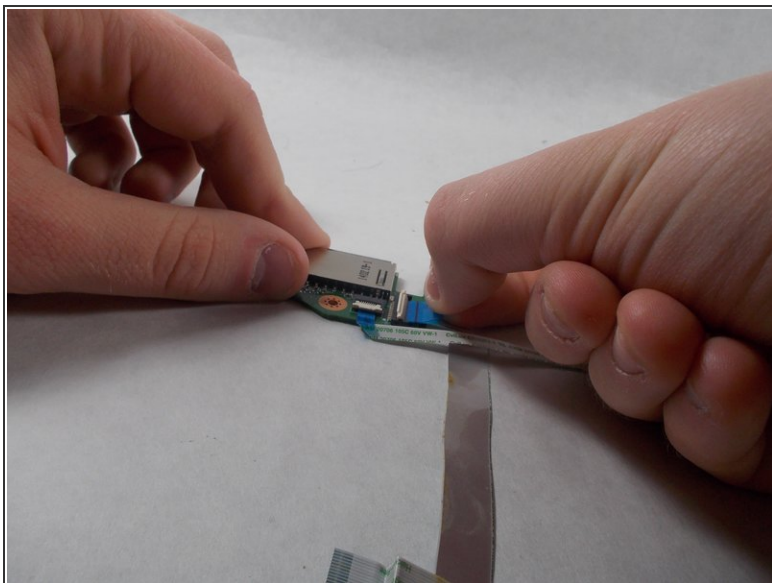
- Grab the edges of each piece of circuitry that is included with the SD Card Reader and USB Port.
- Pull each piece of circuitry out of the Chromebook and remove it from the device.

Step 14



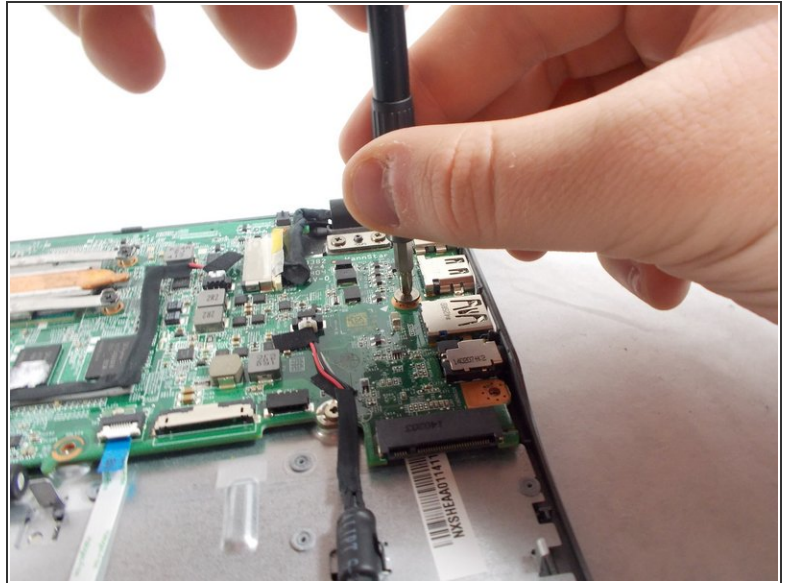
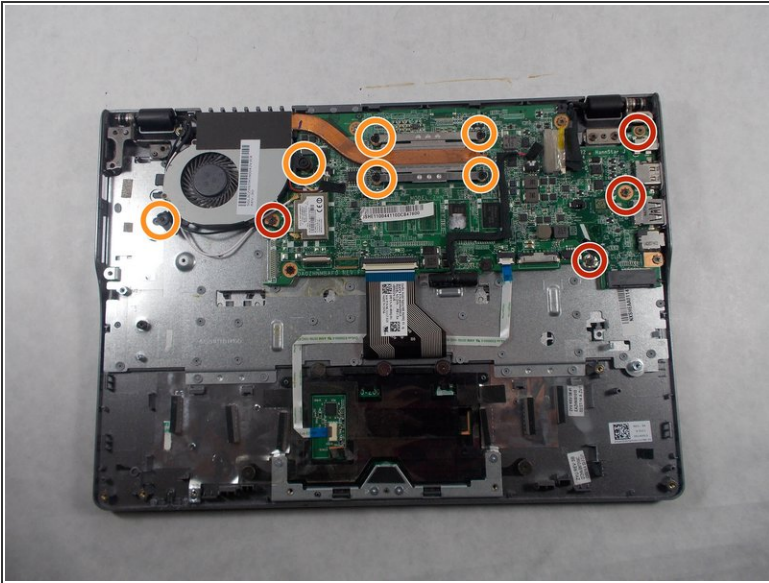
- Position the spudger under the switch.
- Flick the spudger up to flip the switch up.

Step 15



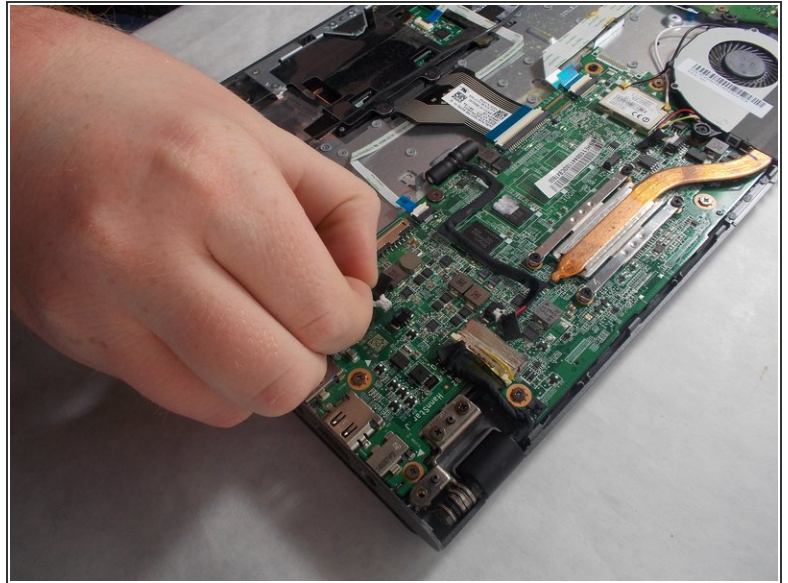
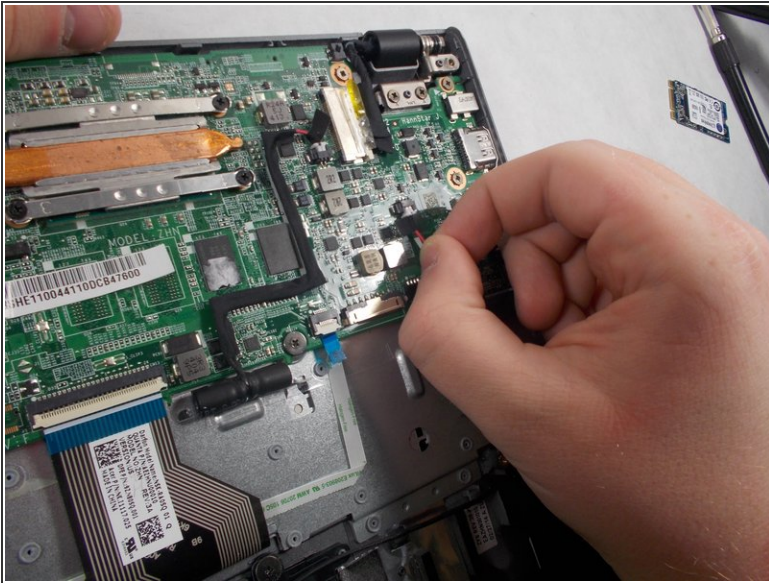
- Pull on the blue tab of the ribbon cable to remove the ribbon cable.
- Repeat the previous step and this step with the other ribbon cable that is attached to the SD Card Reader/USB Port.

Step 16 — Motherboard



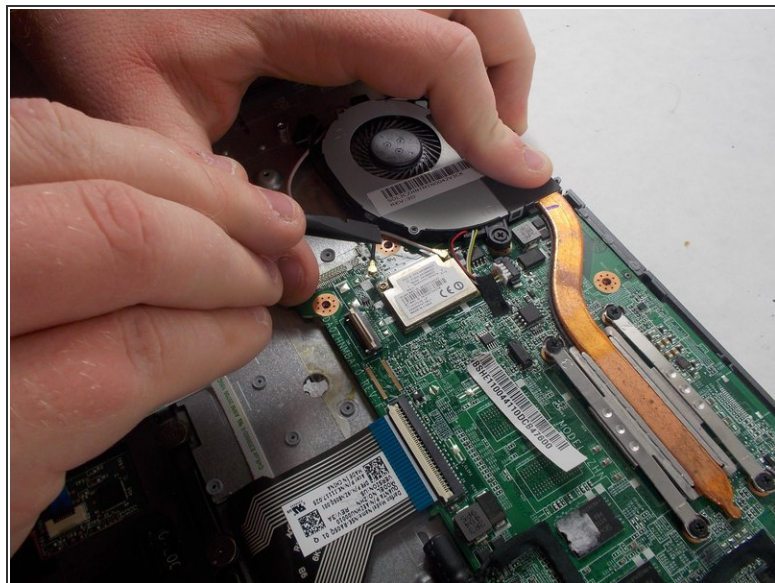
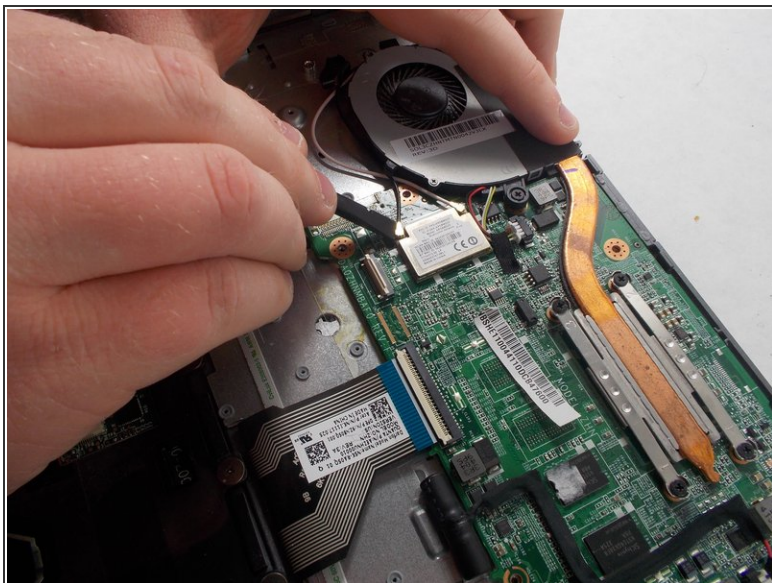
- Using the Phillips #1 screwdriver, remove the four 3.0mm screws.
- Loosen the six 3.0mm CPU screws using the Phillips #1 screwdriver.
- ⓘ The six 3.0mm CPU screws do not come out of the motherboard.

Step 17



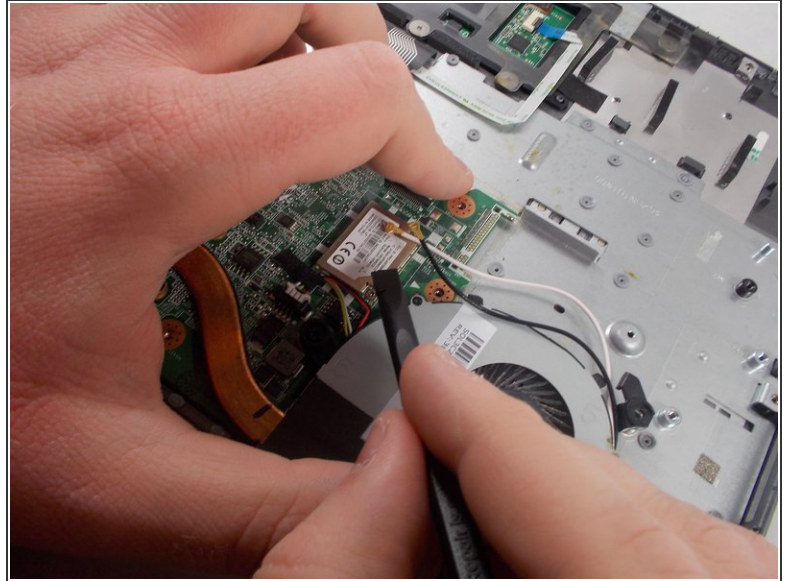
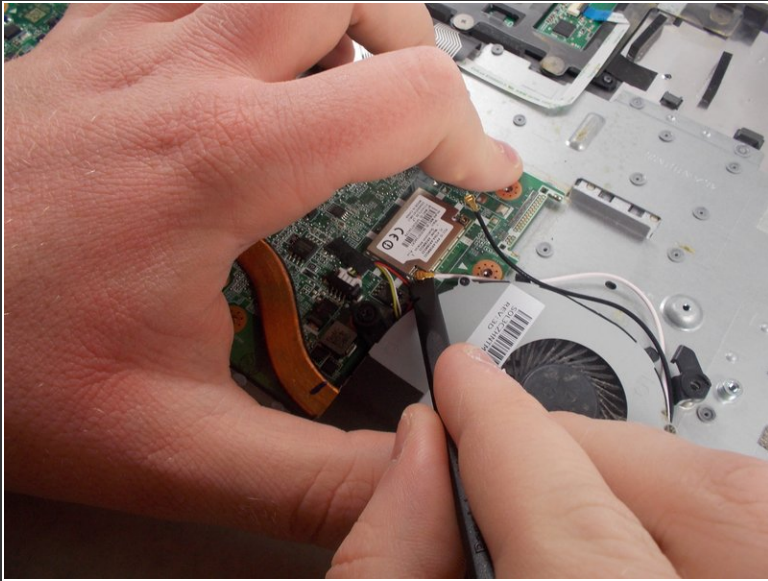
- Grab the wire for the two pin connector.
- Pull the wire to disconnect it from the motherboard.

Step 18



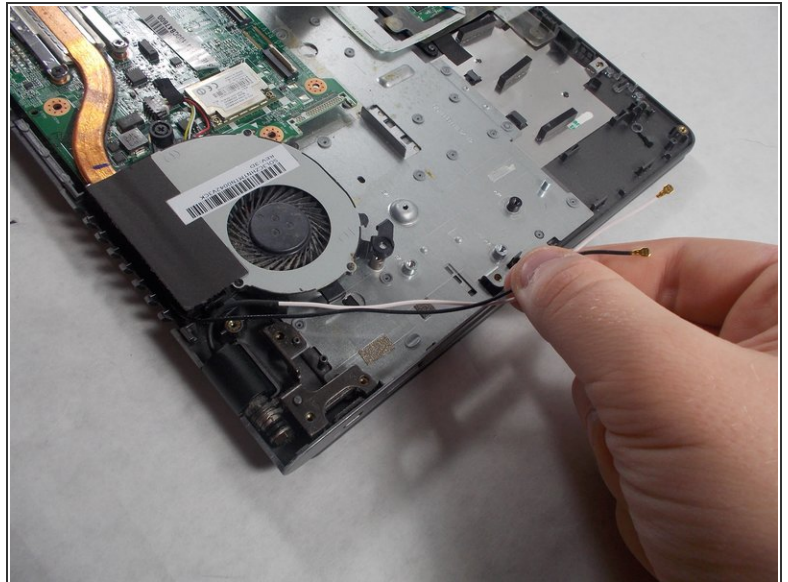
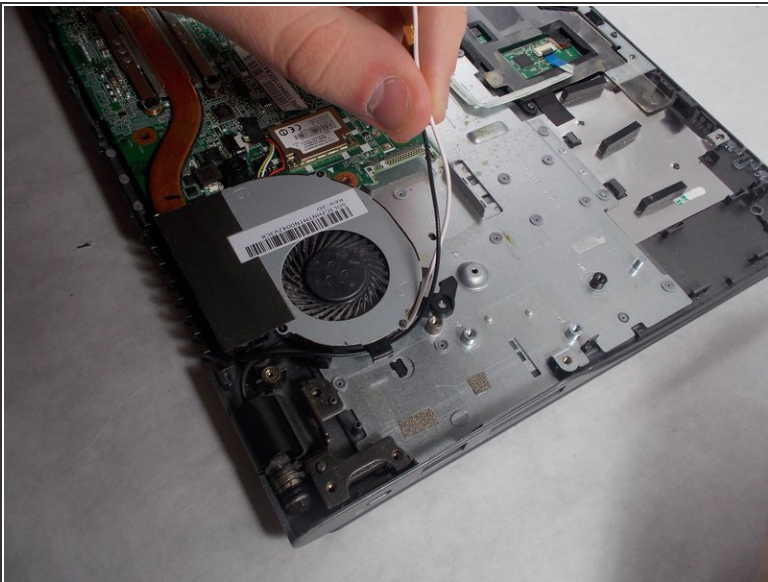
- Place the back of the spudger under the black wire that connects the wireless card to the motherboard.
- Flick the spudger up to disconnect the cable from the motherboard.

Step 19



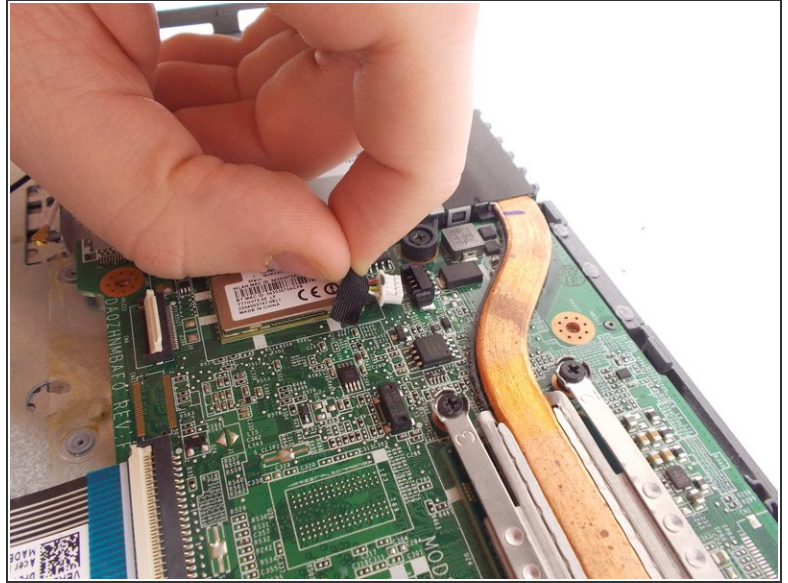
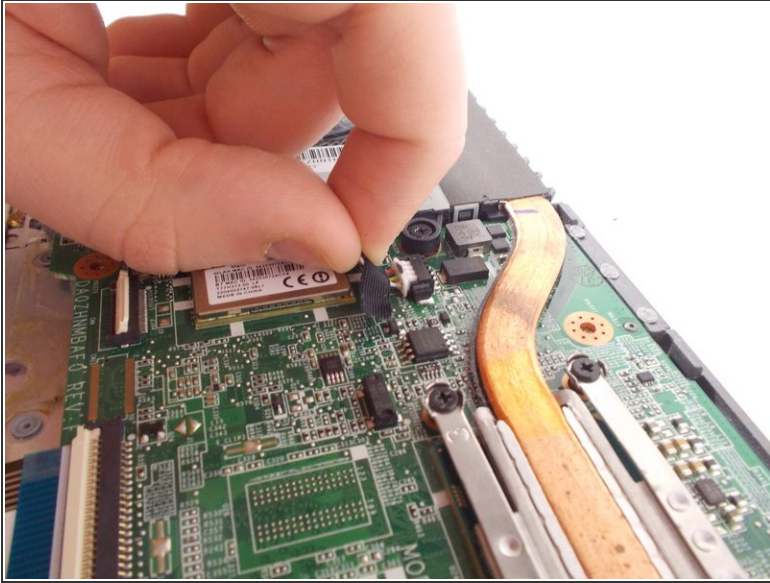
- Place the back of the spudger under the white coaxial antenna wire that connects the wireless card to the motherboard.
- Flick the spudger up to disconnect the cable from the motherboard.

Step 20



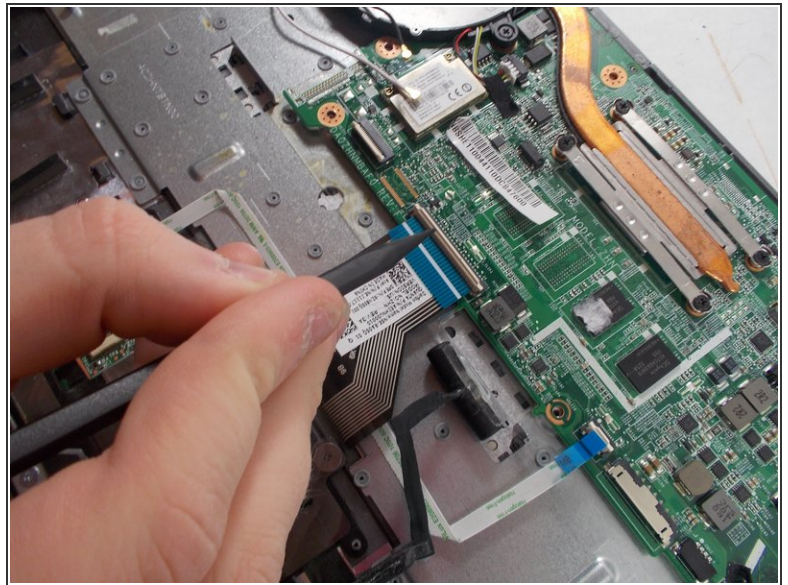
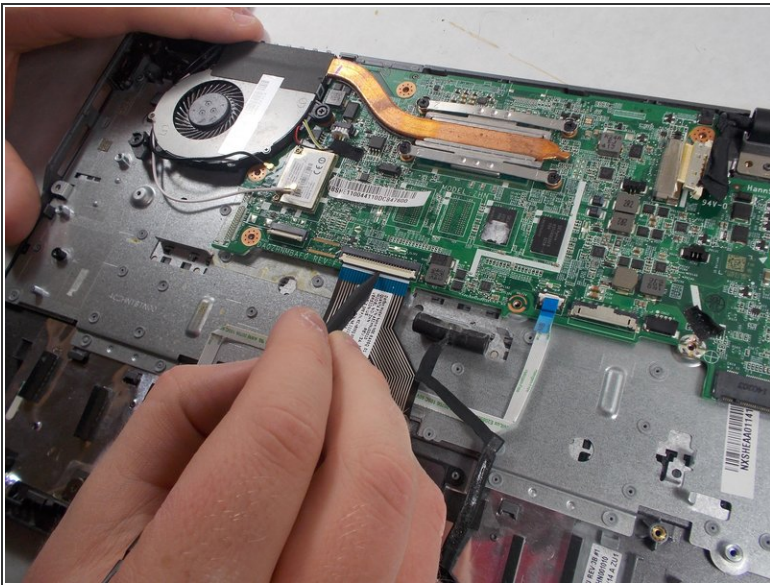
- Take both wires and unravel them from the CPU fan.

Step 21



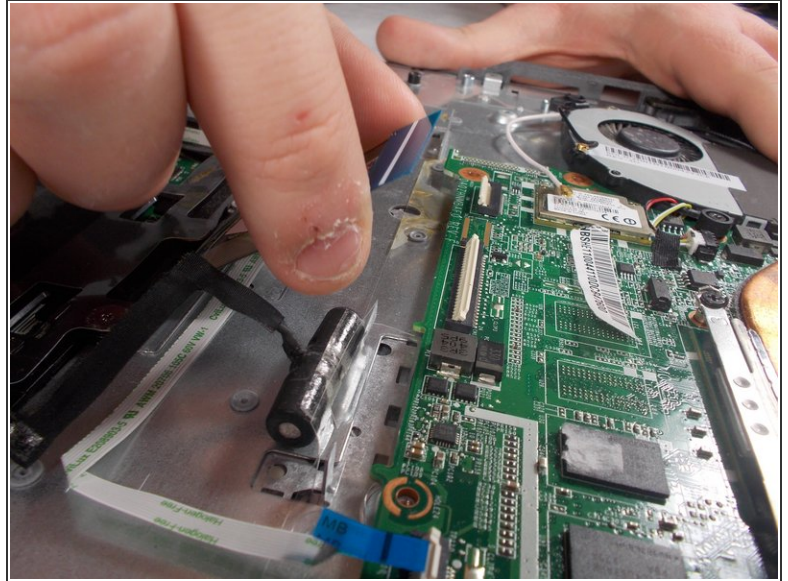
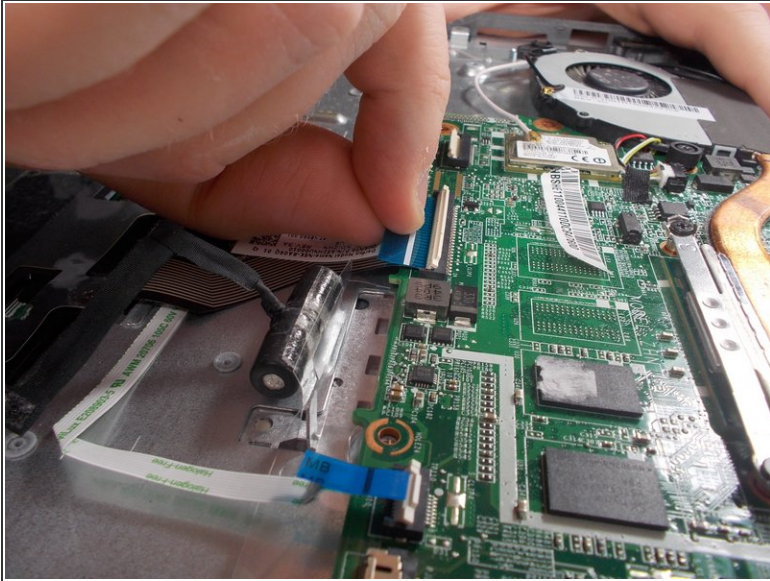
- Firmly grasp the red, yellow, and white cords with two fingers.
- Pull the cords to unplug it.

Step 22



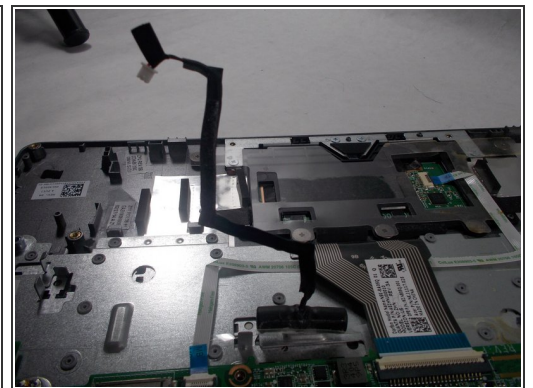
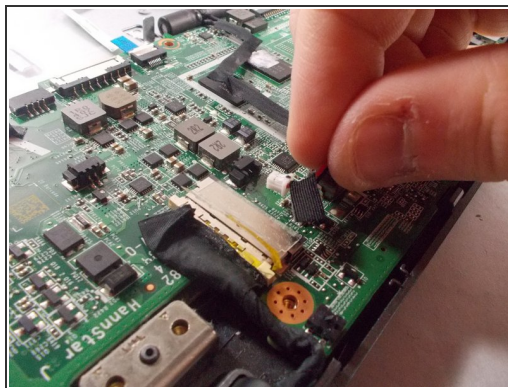
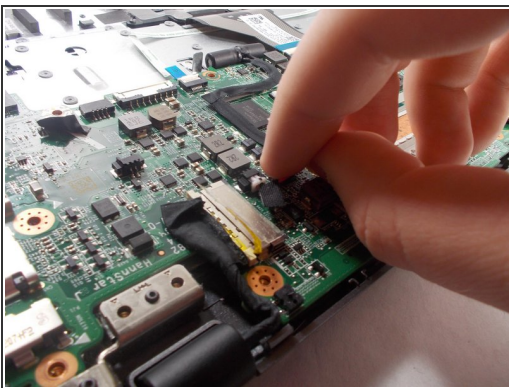
- Position the spudger under the switch of the big ribbon cable.
- Flick the spudger up to flip the switch up.

Step 23



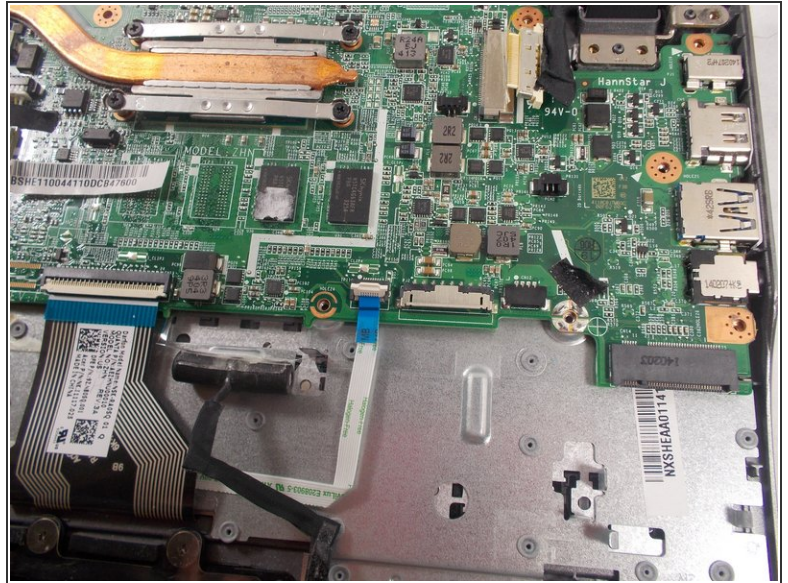
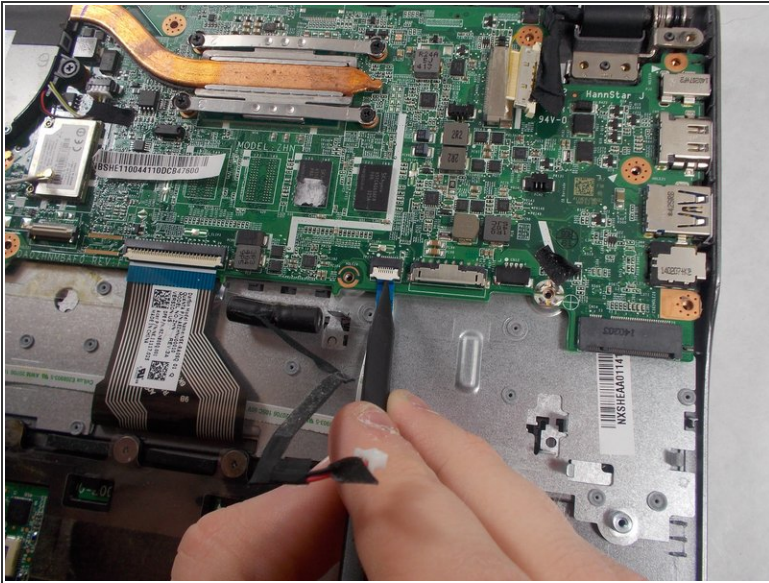
- Grab the blue tab of the ribbon cable.
- Pull on the blue tab to disconnect the ribbon cable.

Step 24



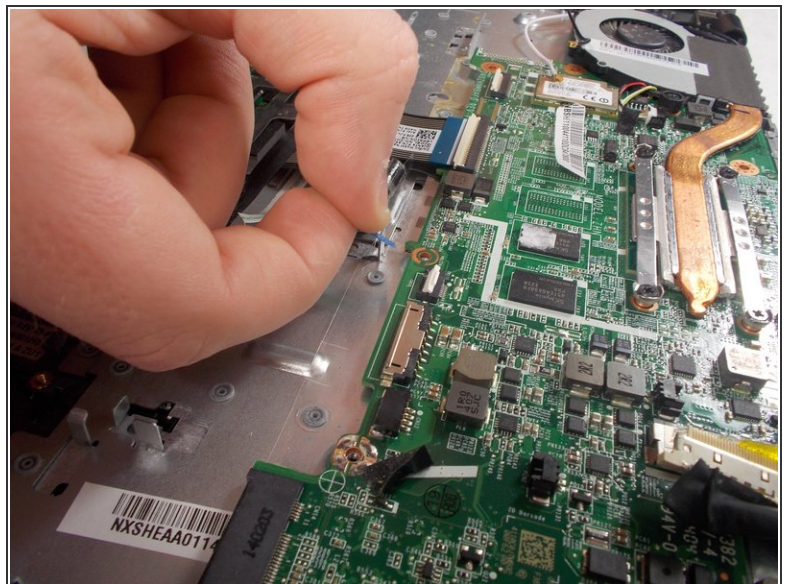
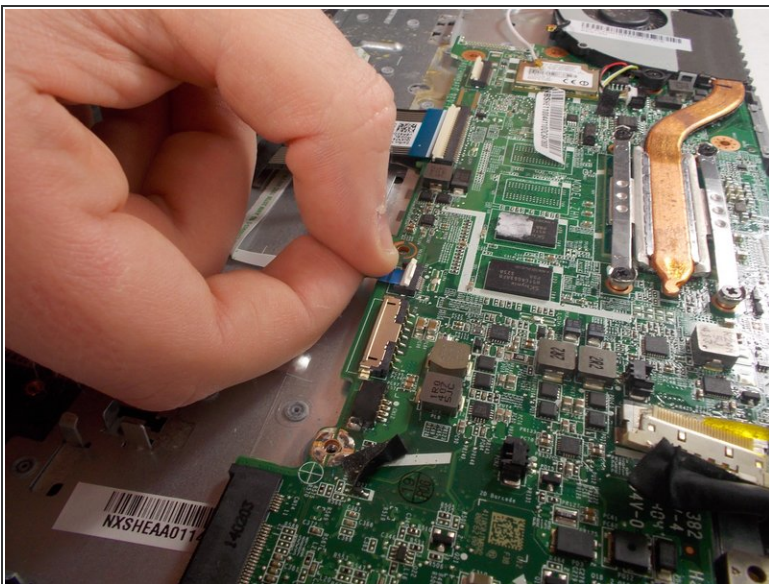
- Grab the red and black cable near the display cables, this is the cable to the other two pin connector.
- Pull on the wire to disconnect it from the motherboard.
- Flip the wire and the connector up to move it out of the way.

Step 25



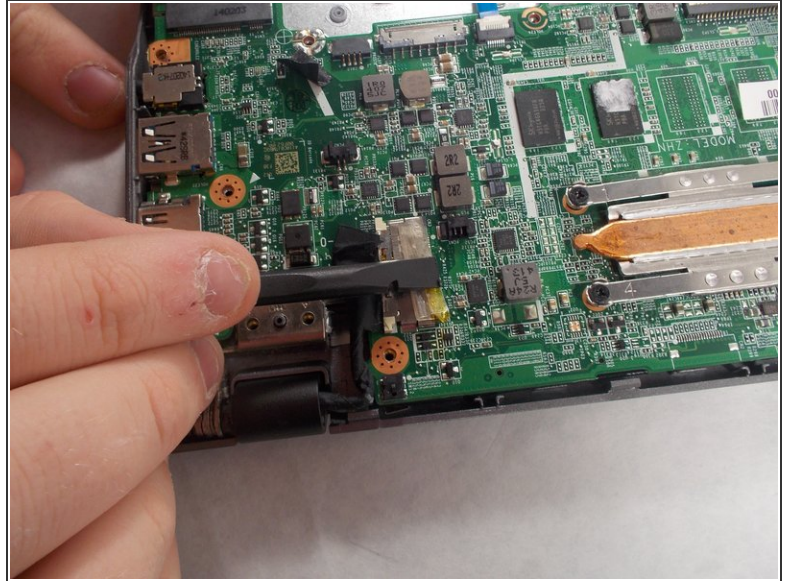
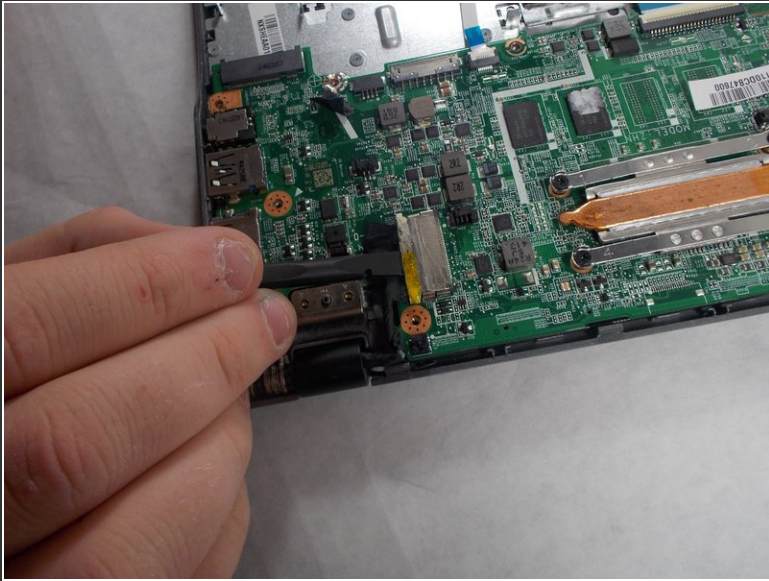
- Position the spudger under the switch for the smaller ribbon cable.
- Flick the spudger up to flip the smaller switch up.

Step 26



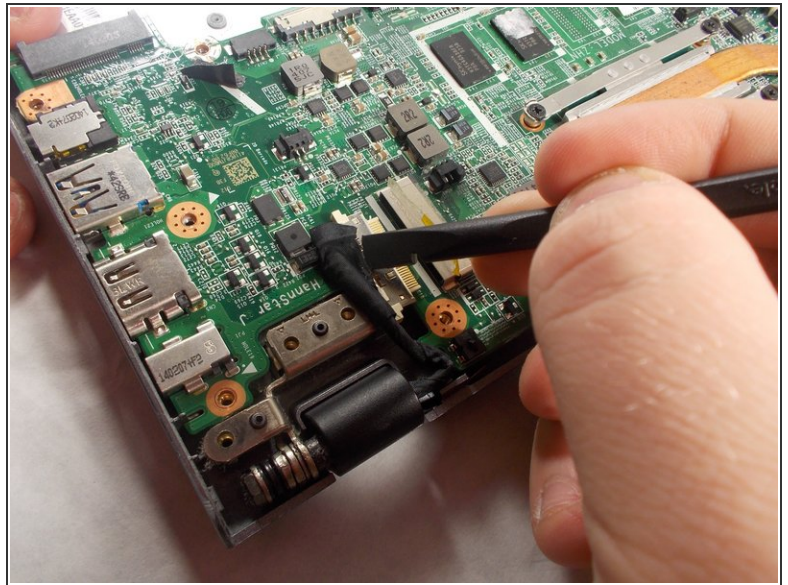
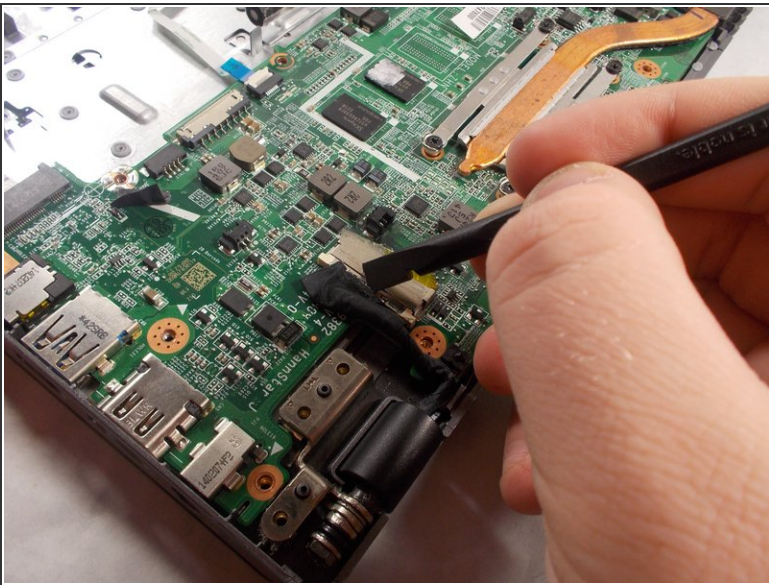
- Grab the blue tab on the ribbon cable.
- Pull on the tab to disconnect the ribbon cable from the motherboard.

Step 27



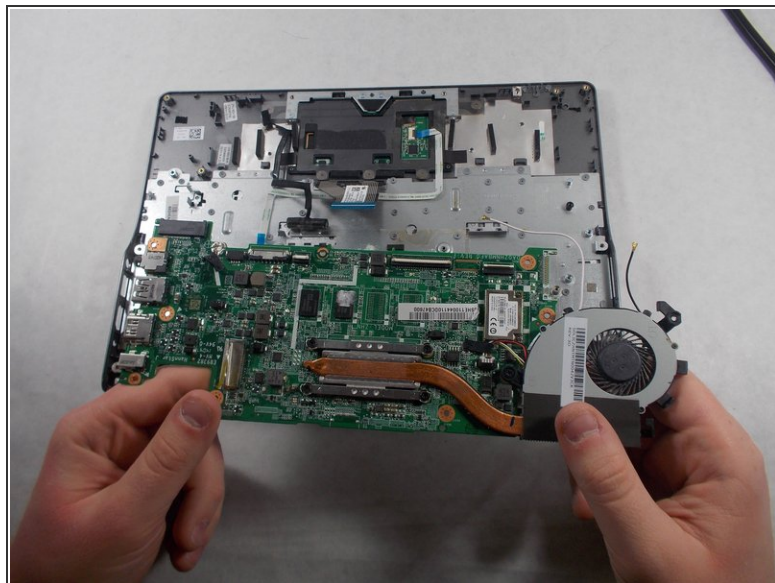
- Position the back of the spudger at the edge of the tape that holds the display cable in.
- Peel the tape back so it is out of the way.

Step 28



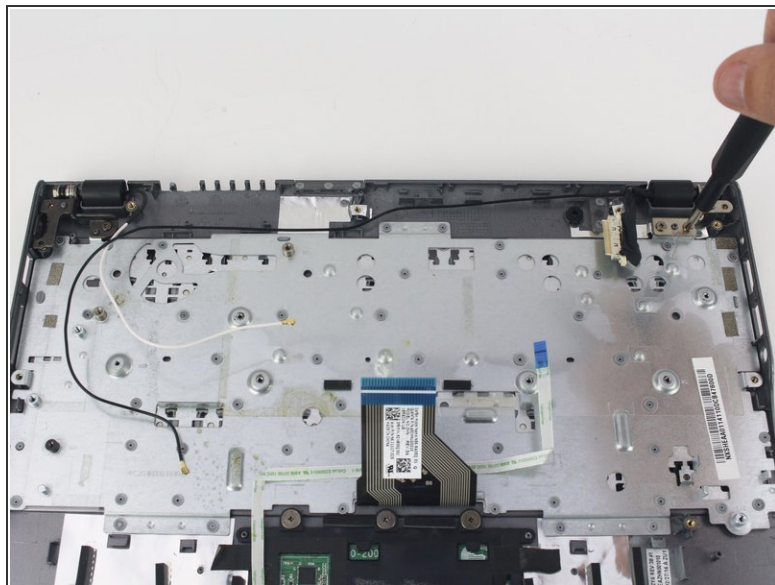
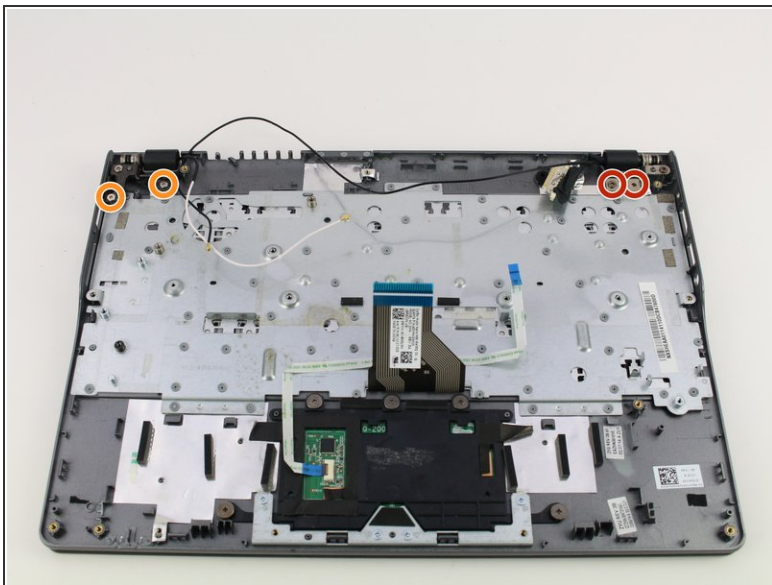
- Position the back of the spudger on the display cable.
- Push the display cable out using the back of the spudger.

Step 29



- Lift up the CPU fan to ensure that no wires are tangled. If the black and white wires are tangled please repeat step 5.
- Lift up the other end of the motherboard to completely remove the motherboard.

Step 30 — Keyboard



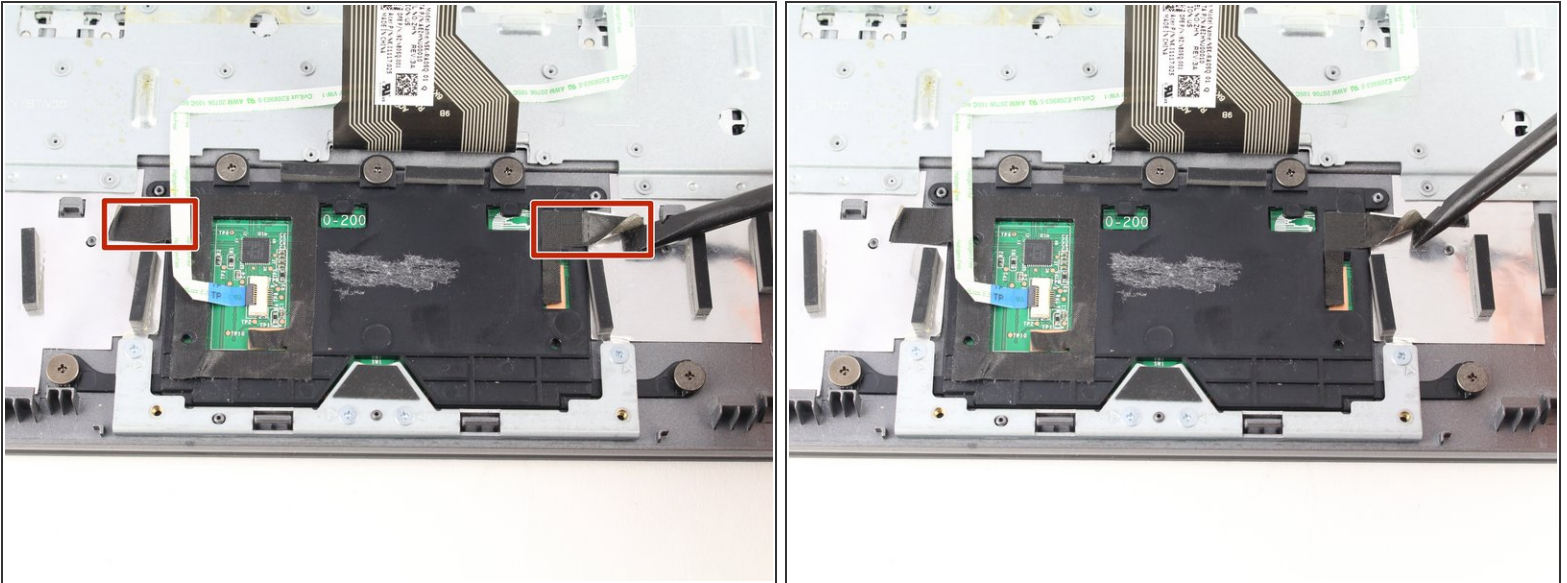
- Remove the two 3.7 mm screws with a Phillips #1 screwdriver.
- Remove another two 5.7mm screws with a Phillips #1 screwdriver.

Step 31



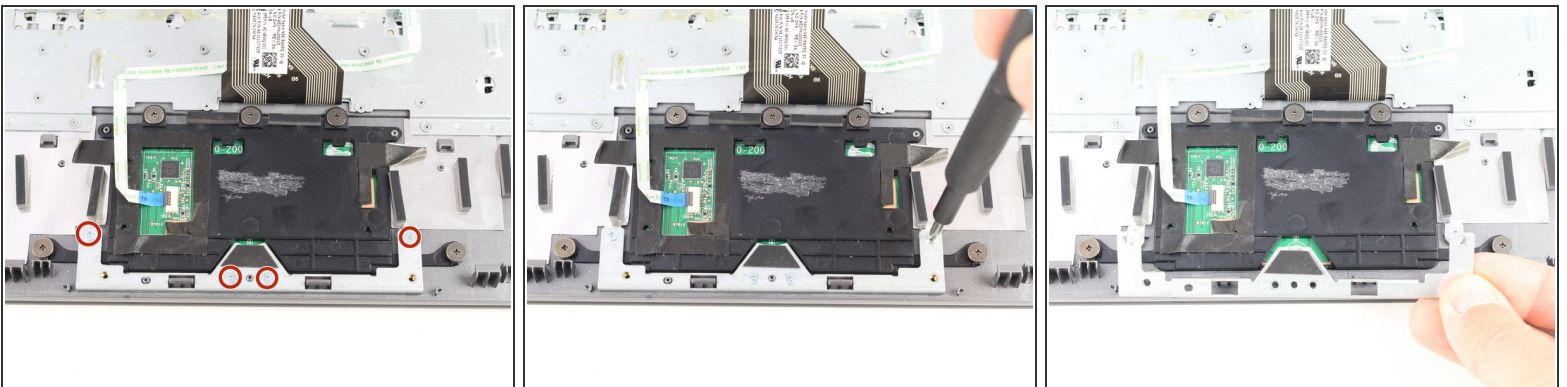
- Open the laptop and separate the display from the keyboard.

Step 32



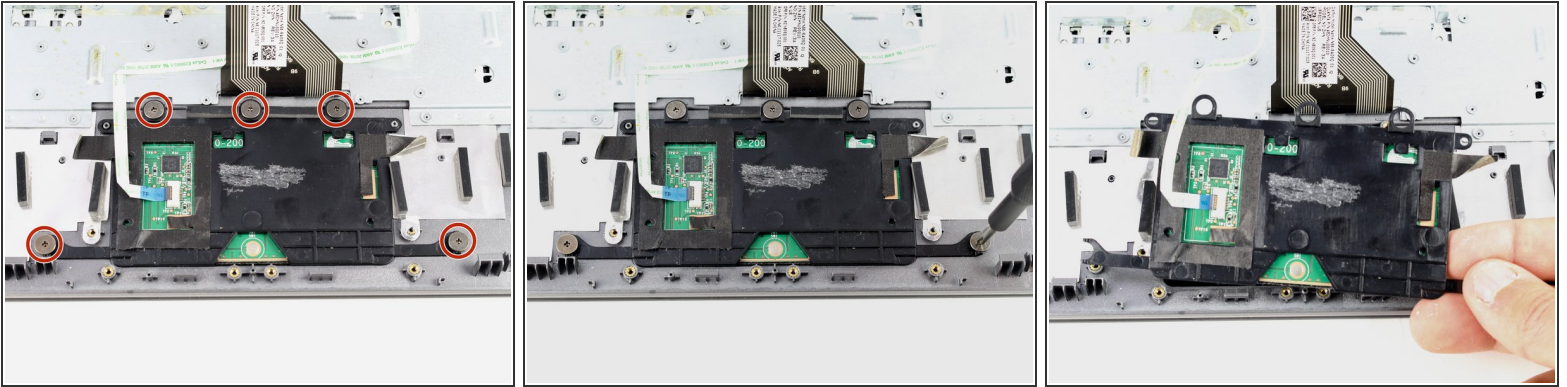
- Lift up the tape on either side of the trackpad.

Step 33



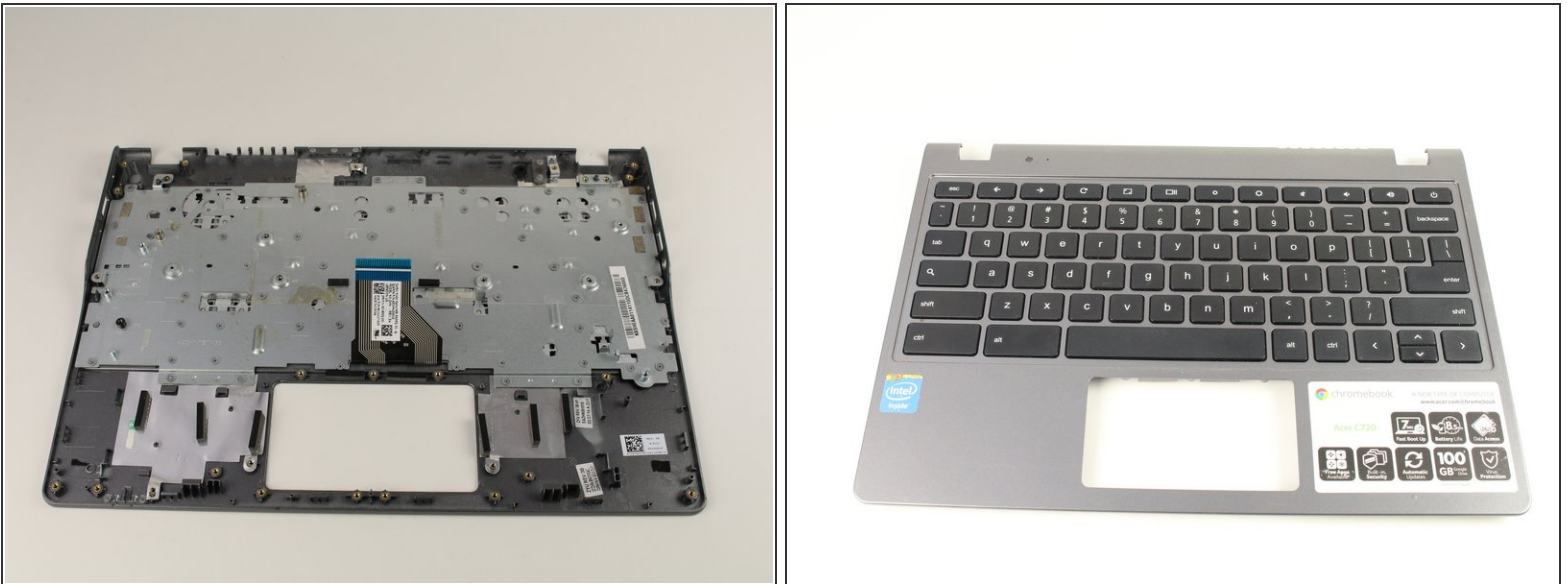
- Remove four silver 2.9 mm screws with your Phillips #1 screwdriver.
- Lift the metal bracket from the case.

Step 34



- Remove five grey 2.5 mm screws with the Phillips #1 screwdriver.
- Lift the trackpad from the case.

Step 35



-  What remains is the keyboard assembly to be replaced.

To reassemble your device, follow these instructions in reverse order. Be sure to reassemble onto your new keyboard!