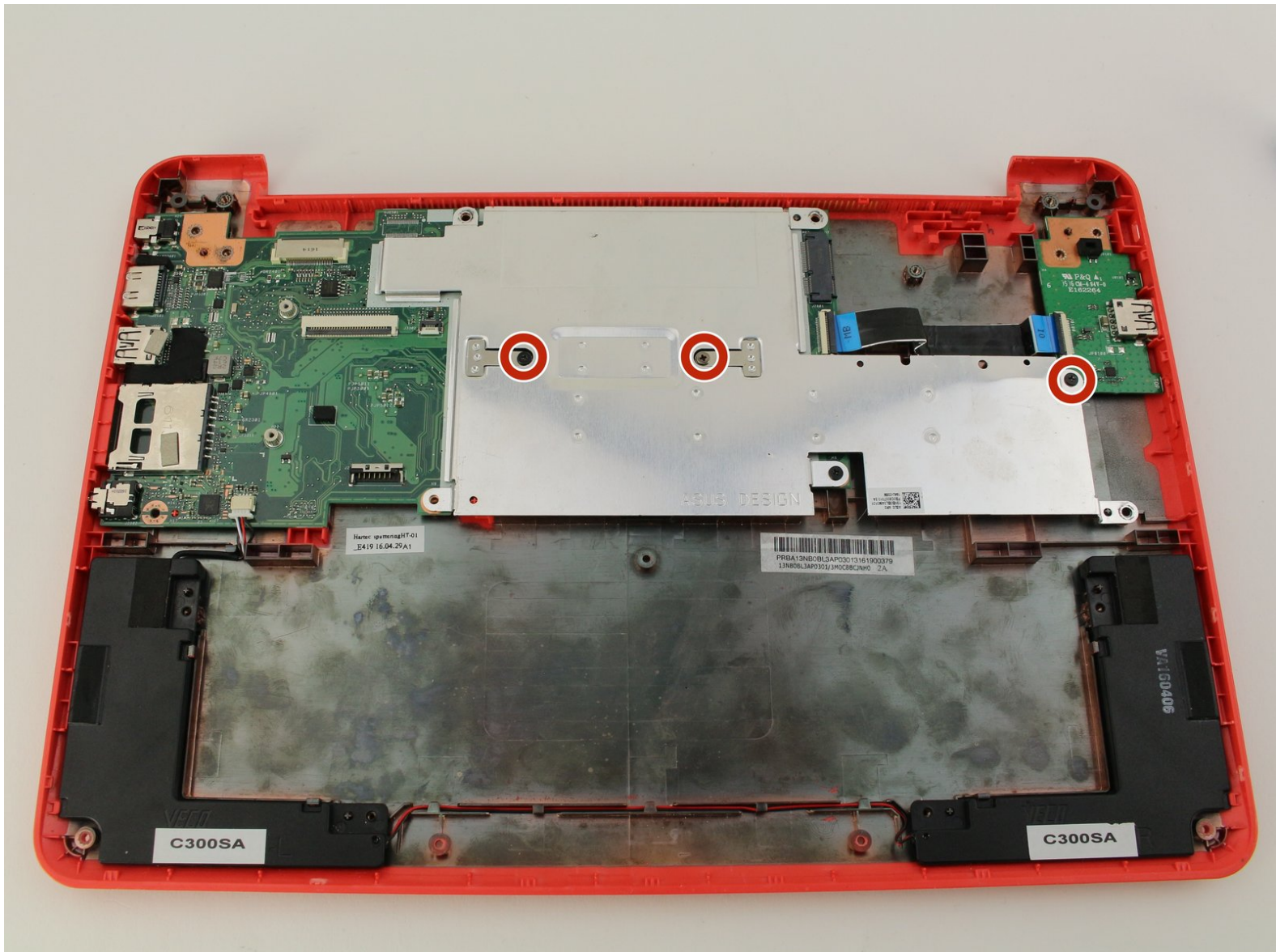




# Asus Chromebook C300SA-DS02 Motherboard Replacement

Use this guide if you would need to replace your Asus Chromebook C300SA-DS02 motherboard.

Written By: Sarah Westberg



---

## INTRODUCTION

If your Asus Chromebook C300SA-DS02 motherboard breaks or becomes damaged and you need to replace it, follow this guide. You will need to remove the back cover and keyboard to access it and follow several other prerequisite guides before you begin.




### TOOLS:

- [Spudger](#) (1)
  - [iFixit Opening Tools](#) (1)
  - [Phillips #0 Screwdriver](#) (1)
-

## Step 1 — Keyboard




 Power the laptop off and make sure the charger is unplugged before starting.

- Remove the eight 8.0mm Phillips #0 screws on the bottom of the laptop.
- Remove the three 6.0mm Phillips #0 screws.

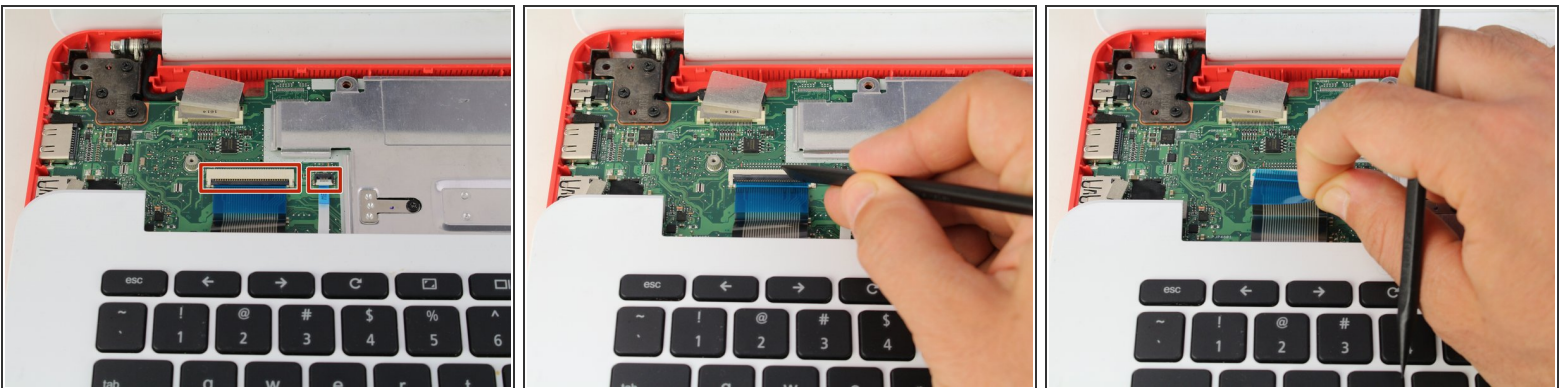
## Step 2



- Open the laptop.
- Using an iFixit opening tool, pry along the edges of the keyboard.
- Lift the keyboard and slide it gently towards you.

 Do not completely remove the keyboard. It is still connected to the back panel by a pair of ribbon cables.

## Step 3



- Disconnect the two ZIF connectors by prying up the locking bar with a spudger and removing the ribbon cable.

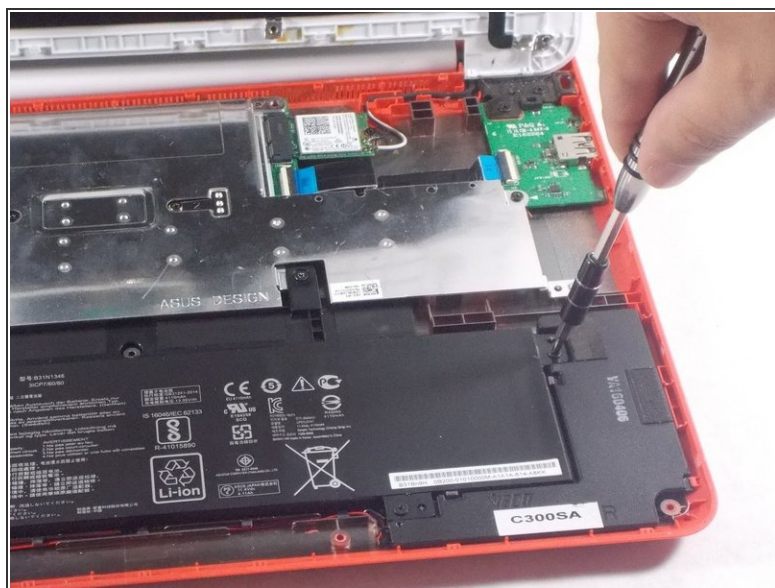
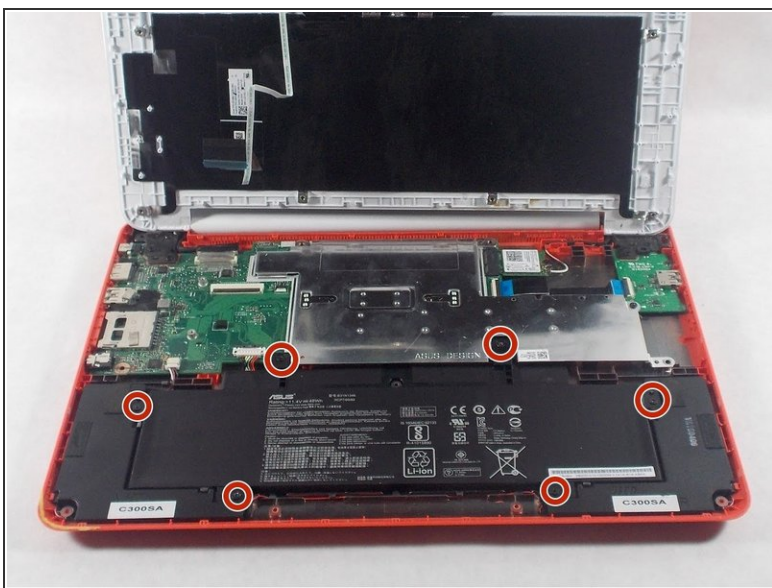


## Step 4



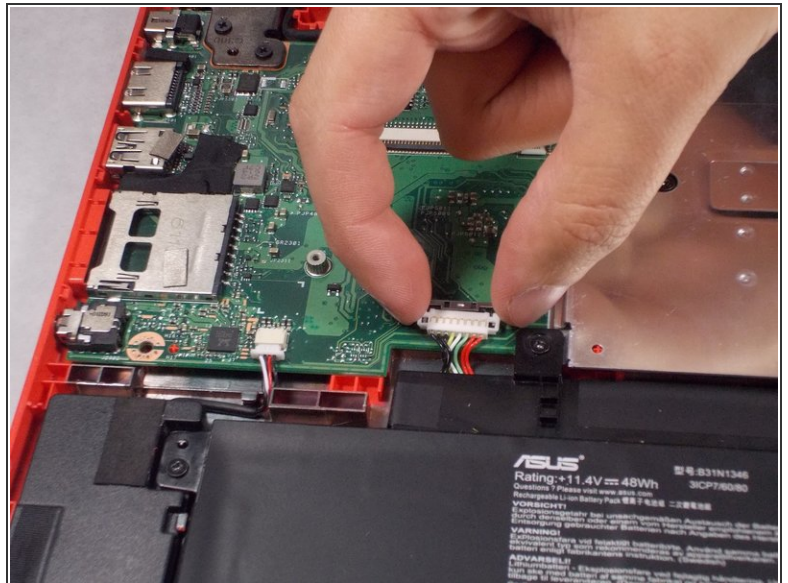
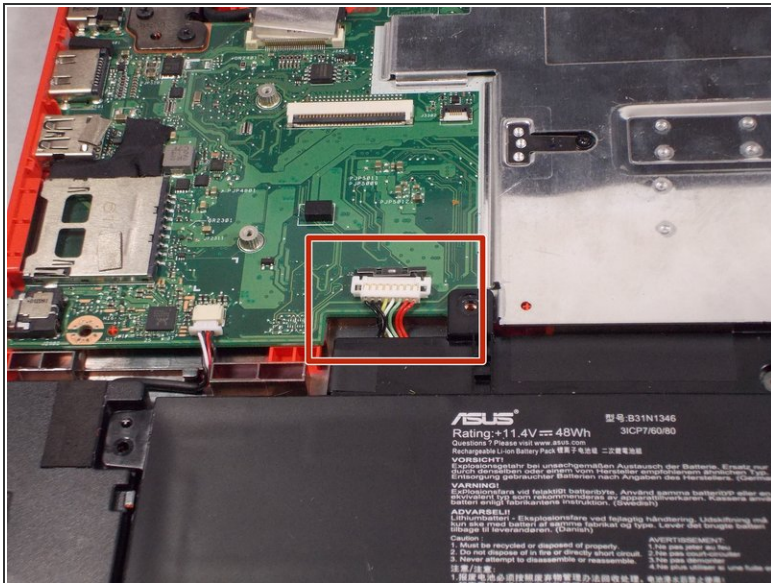
- Remove the keyboard from the laptop.

## Step 5 — Battery



- Remove the six 5.6mm Phillips #0 screws around the battery.

## Step 6



- Using your thumb and index finger, pinch the multi-color cable and disconnect it from the motherboard.

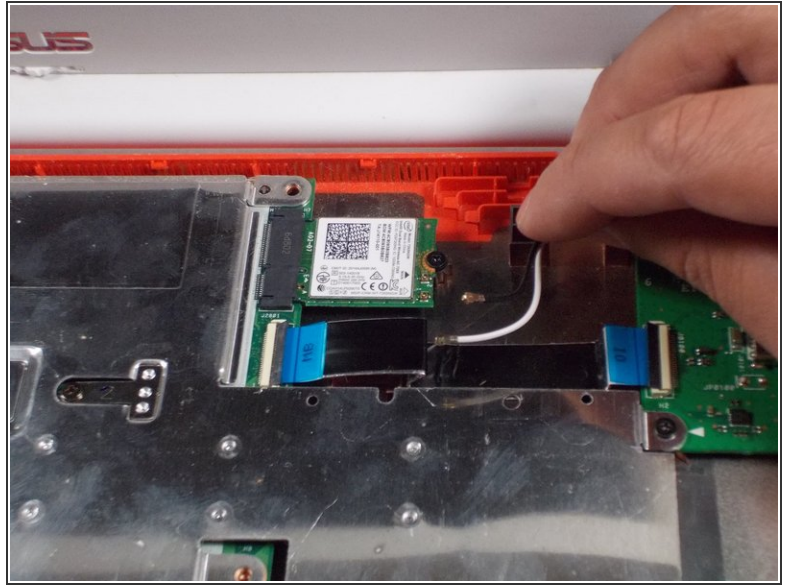
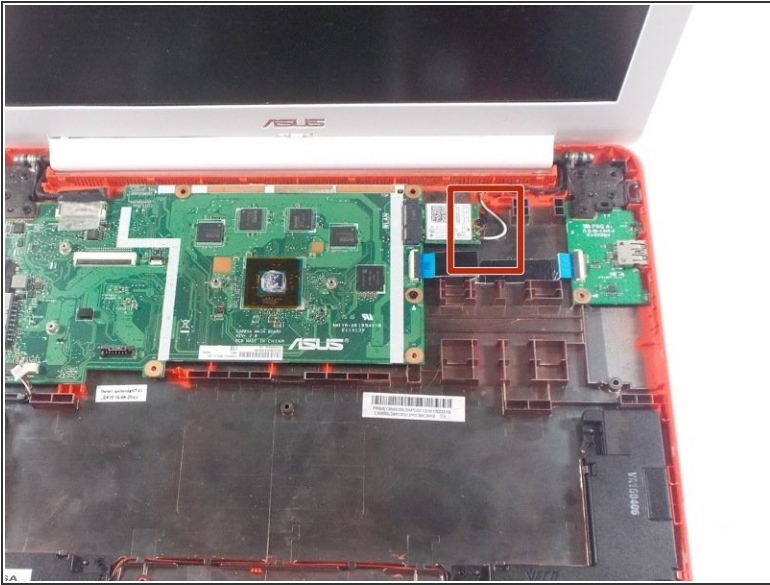
## Step 7



- Lift the battery out of the laptop.

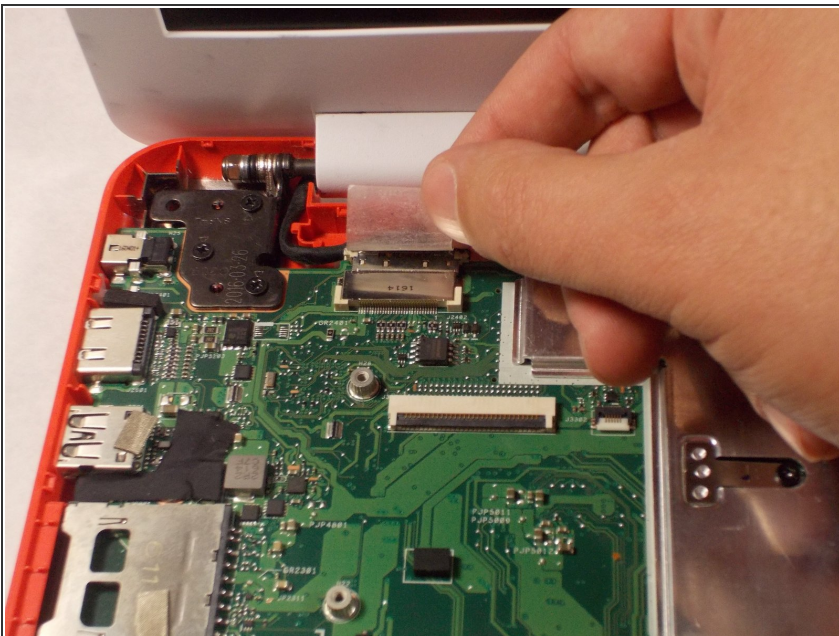


## Step 8 — Display Assembly



- Unplug the black and white cable from the motherboard.
- ⓘ These two wires connect to the antenna within the display assembly. The white cable is longer and connects to the bottom import.

## Step 9



- Peel back the tape covering the display cable.
- Ease the cable towards the screen and out from the connector.

## Step 10



- Use a Phillips #0 driver to remove the six 5mm screws on the top right and left display hinges.

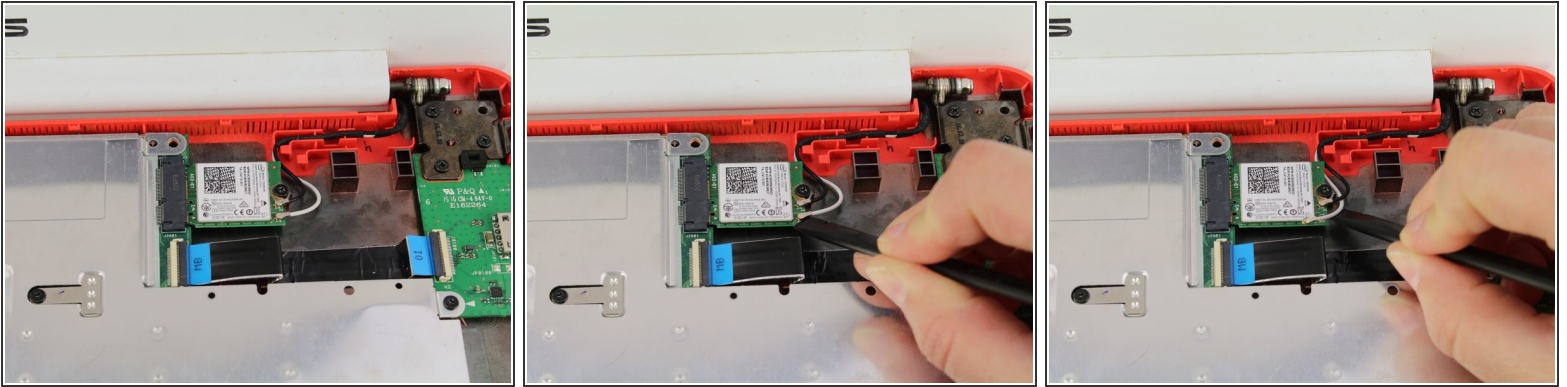
## Step 11



- Gently lift the display assembly up and away from the laptop.

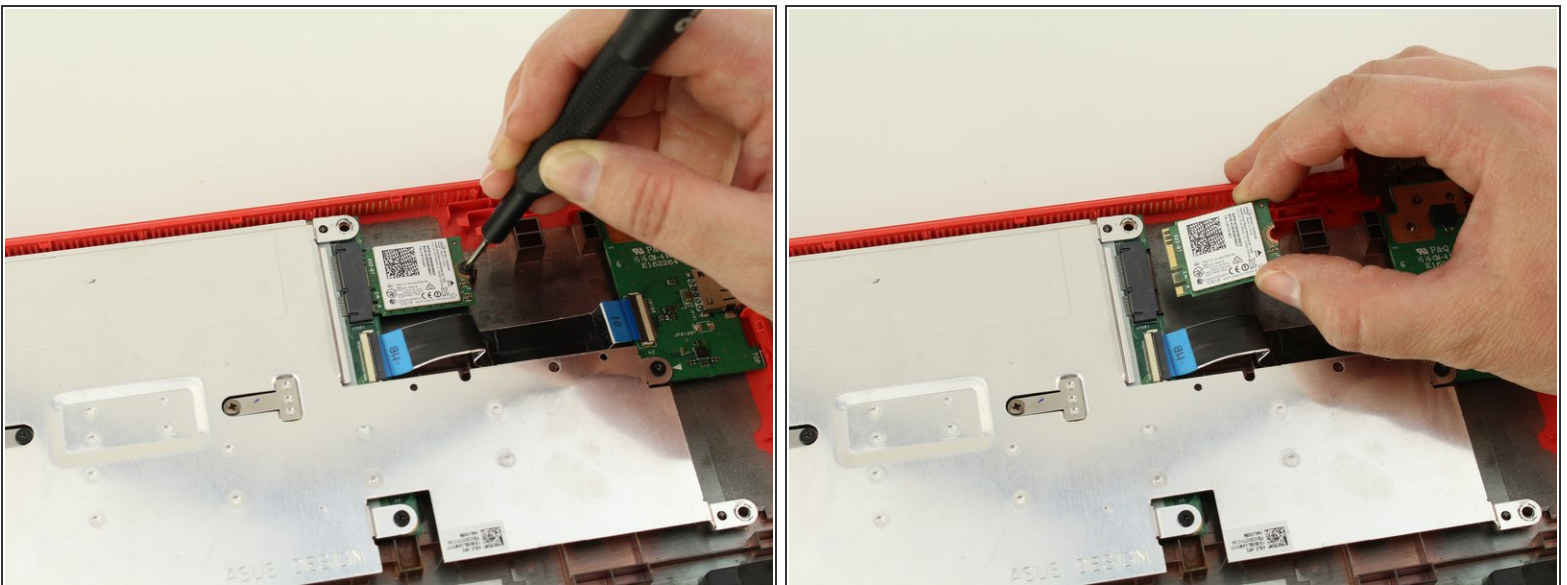


## Step 12 — WiFi Card



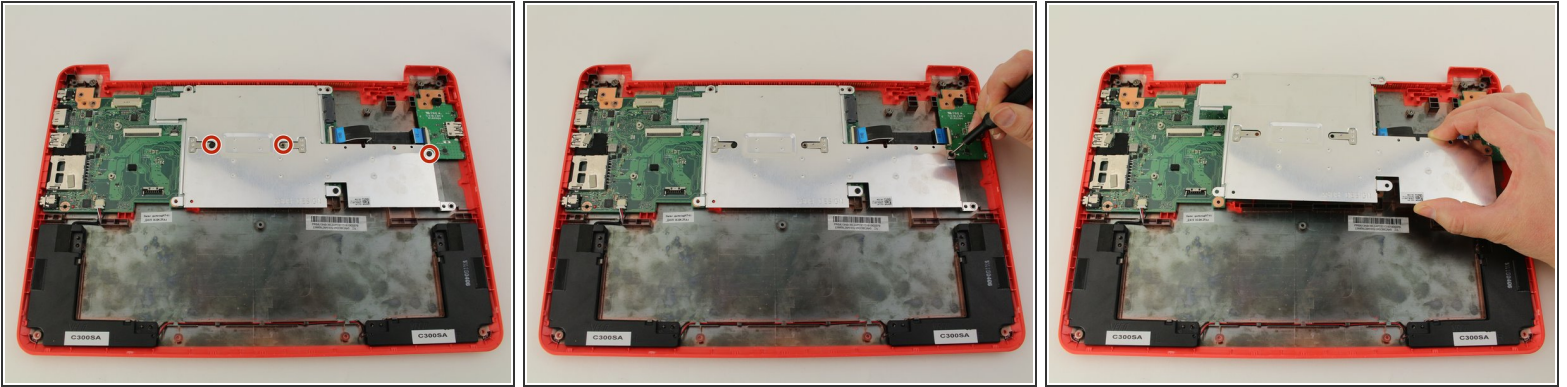
- Use the spudger to pop the black and white coaxial WiFi cables up from the WiFi card.

## Step 13



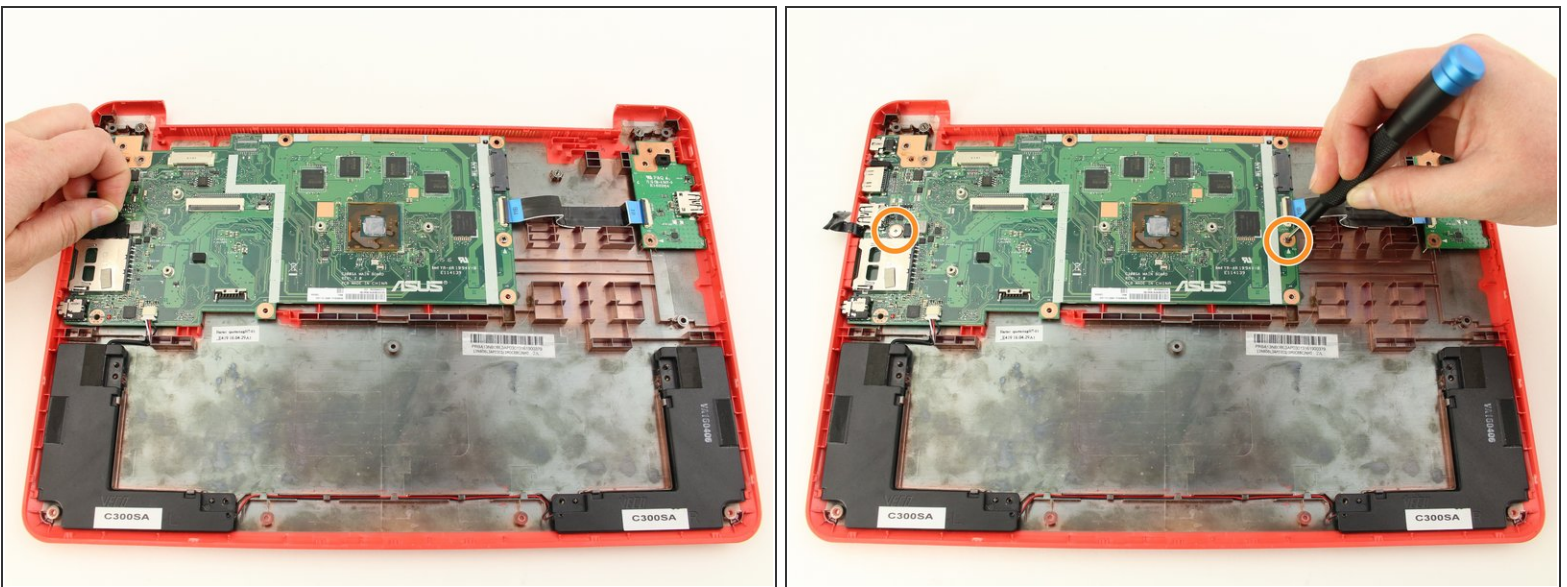
- Remove the one 3.6mm Phillips #0 screw from the WiFi card.
- Pull and lift the WiFi card away from the motherboard.

## Step 14 — Motherboard



- Using your Phillips #0 screwdriver, unscrew three, 3.6mm screws from the silver heatsink.
- Remove the heatsink from the motherboard.

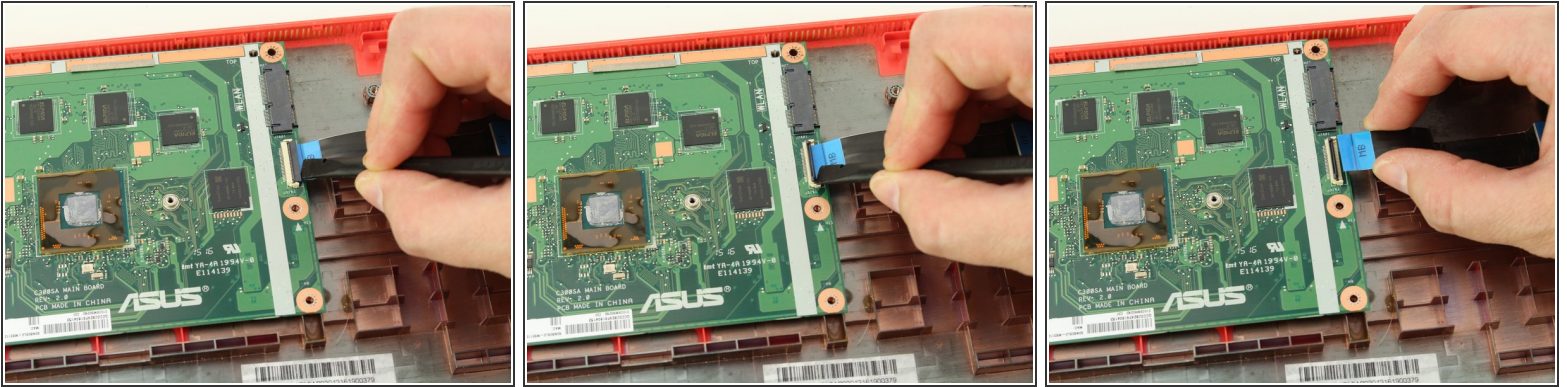
## Step 15



- Remove the black tape from the motherboard covering the 4.2mm silver flat screw.
  - Using a Phillips #0 screwdriver, remove the 4.4mm screw on the right and the 4.2mm silver flat screw on the left from the motherboard.
- i** This is a used device so the screws may be different than the original Chromebook.

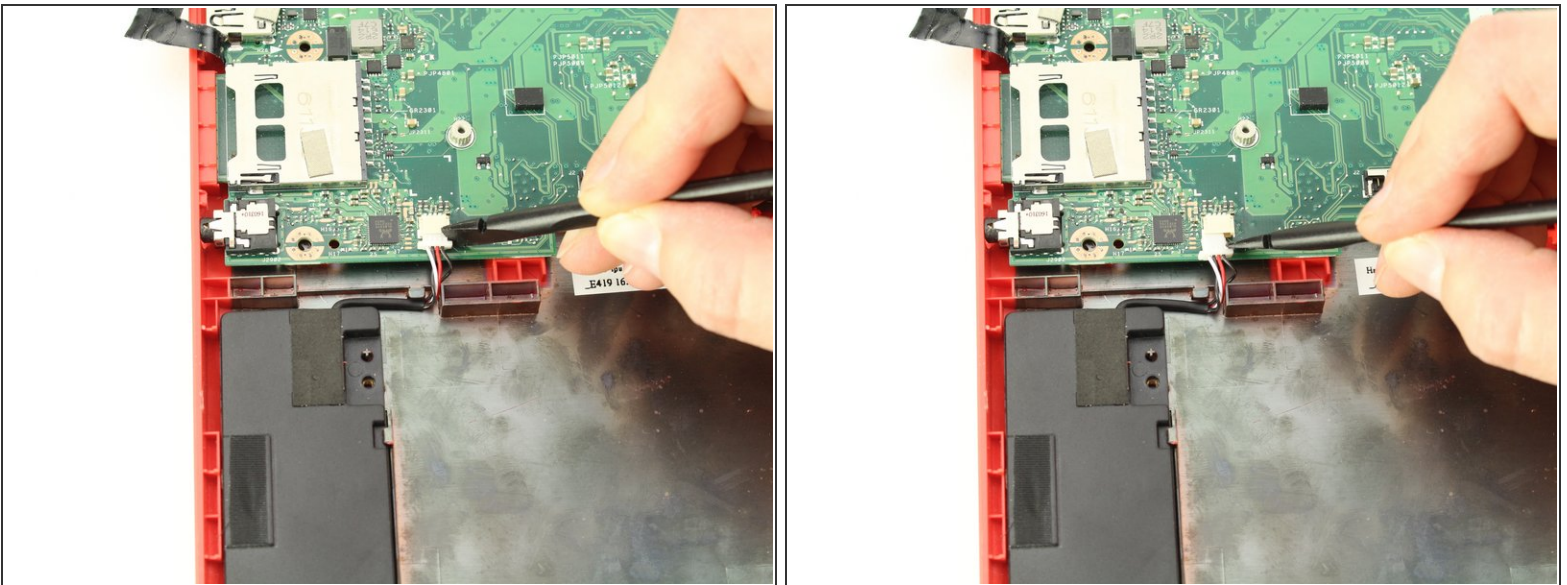


## Step 16



- Using the black nylon spudger, unlock the black bar on the ZIF connector attached to the mid-right of the motherboard.
- Remove the ribbon cable that attaches the motherboard to the daughterboard.

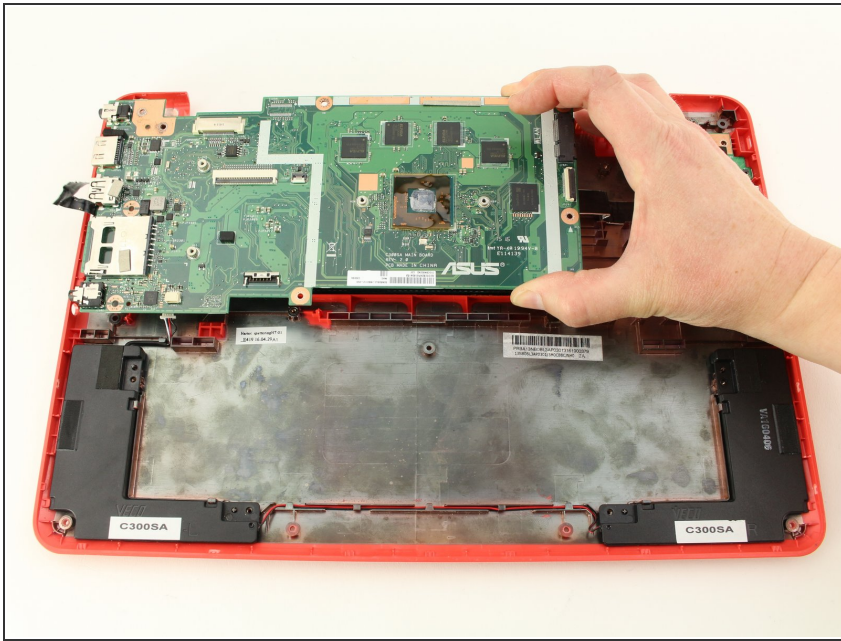
## Step 17



- Using the black nylon spudger, carefully slide the speaker cable connector out from its attachment on the motherboard.



## Step 18



- Wiggle and pull the motherboard out from the bottom case.

To reassemble your device, follow these instructions in reverse order.