



Nyko Wand Teardown

This guide will show you the information tear down of the Wii remote .

Written By: Demian De La Vega



INTRODUCTION

Disassembling the remote requires removing screws under the batteries. Removing anything inside will require caution and time .



TOOLS:

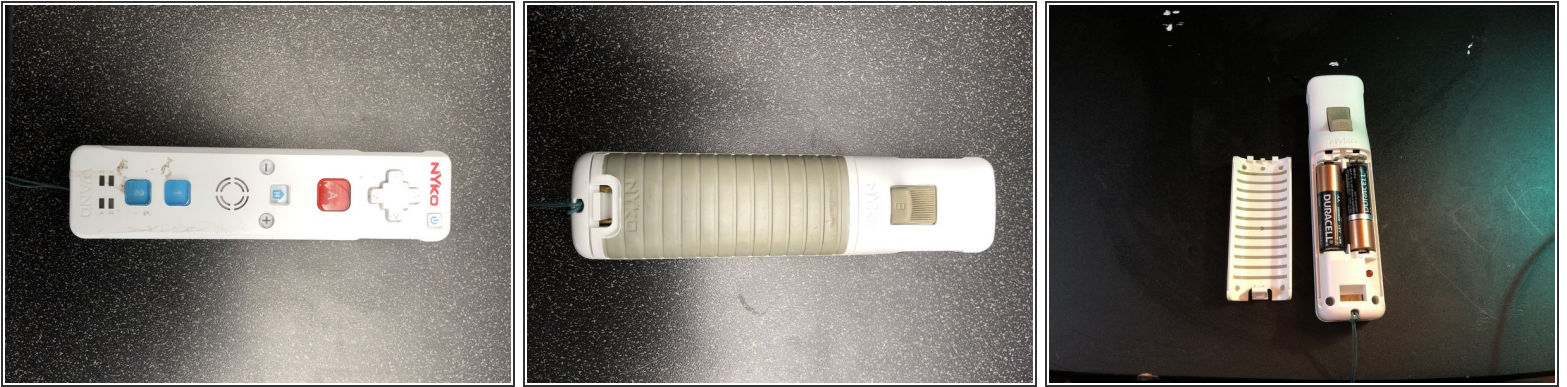
- [Y1 Tri-point Screwdriver](#) (1)

Y1

This will be used to remove the screws

- [6-in-1 Screwdriver](#) (1)
-

Step 1 — Removing battery cover and back plate



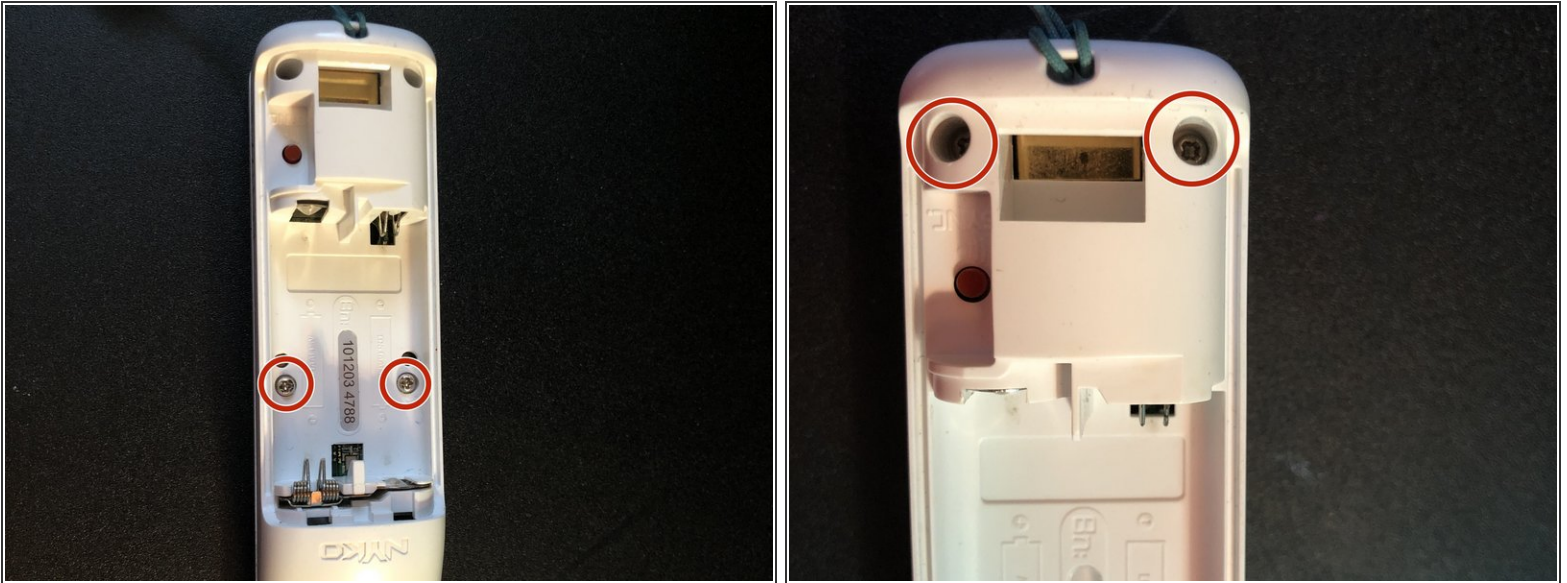
- First flip controller so that the back plate faces you
- Remove the battery cover by pushing up on the bottom plate

Step 2



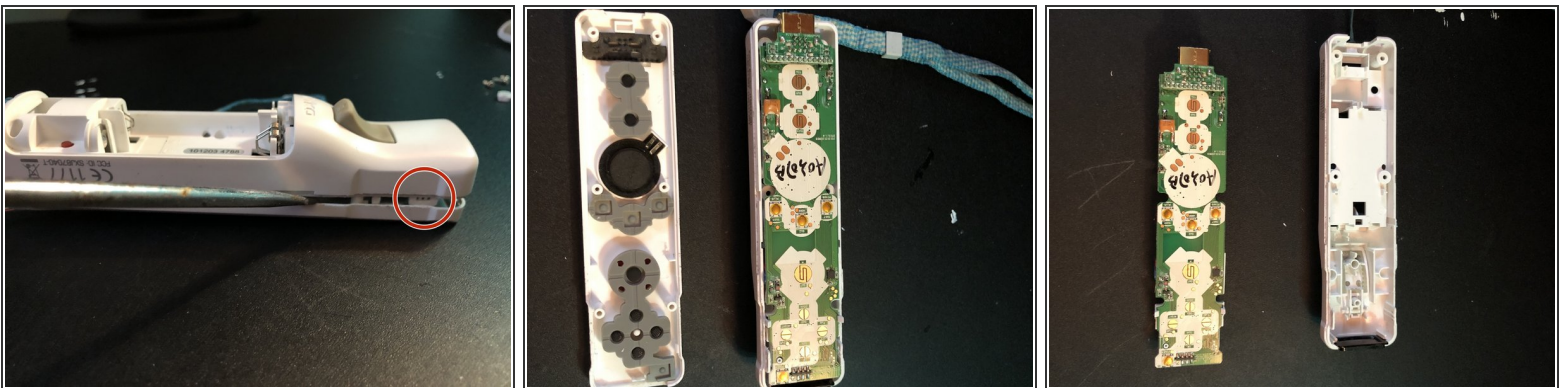
- Remove both batteries if their are any inside the remote .
- To remove them press down on the positive end then pull to take out

Step 3



- Using the tri-point Y1 Screw driver remove the two center screws by turning counter clock wise
- Repeat process for bottom two

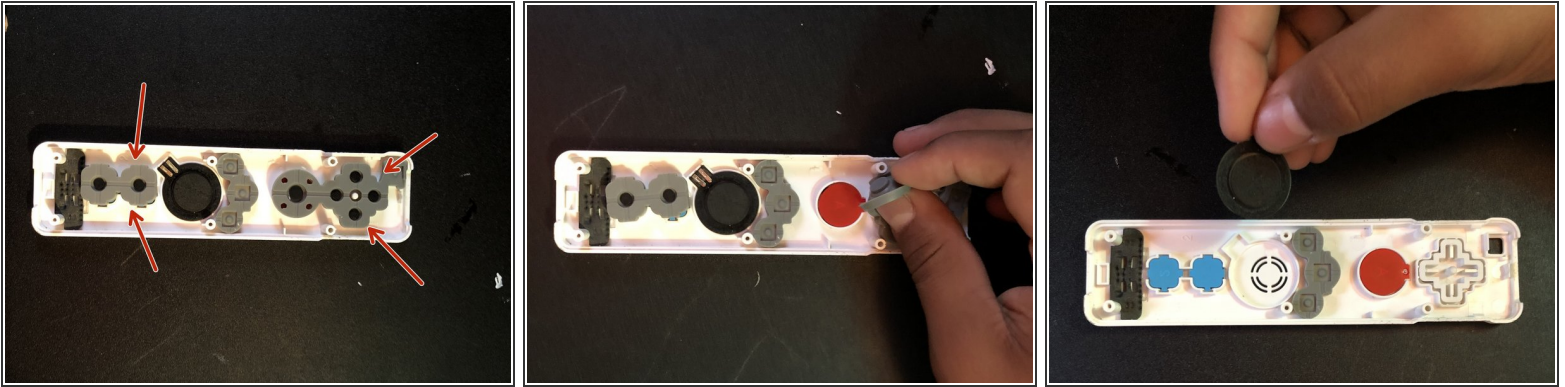
Step 4



- To fully take off the back piece you will have to use your flat head screw driver and gently go along the edge and unclip it.
- Gently pull out the whole circuit board (be careful you may break or rip a wire if you pull to hard)

⚠ {CAUTION :WATCH OUT FOR SMALL PARTS}

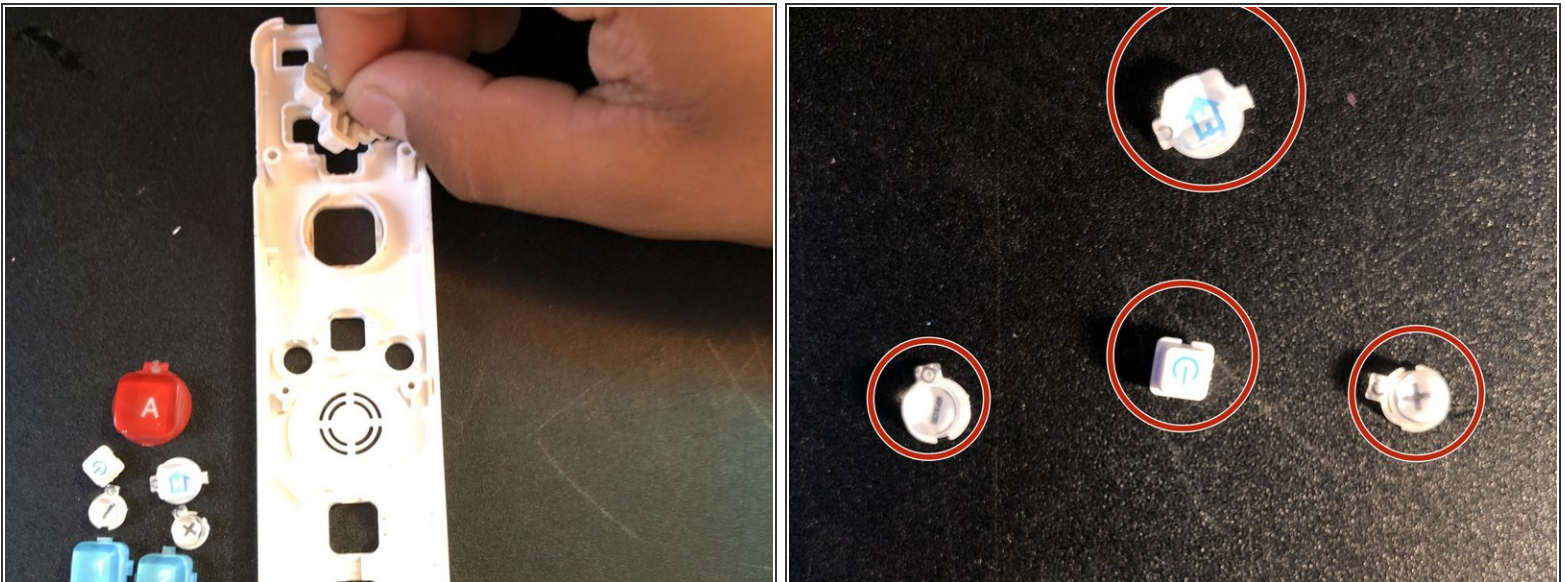
Step 5



- To remove the buttons you will simply have to take off the grey silicon cover.
- To remove the small speaker you can simply pull up .

⚠ CAUTION : FOR SMALLER BUTTONS LIKE THE VOLUME ONES .

Step 6



- Gently pry the buttons upwards ,removing the buttons from its holding slot.
- CAUTION : WATCH OUT FOR SMALL BUTTONS !

i IF YOU WANT TO REBUILD IT FOLLOW STEPS 1-7 BACKWORDS.