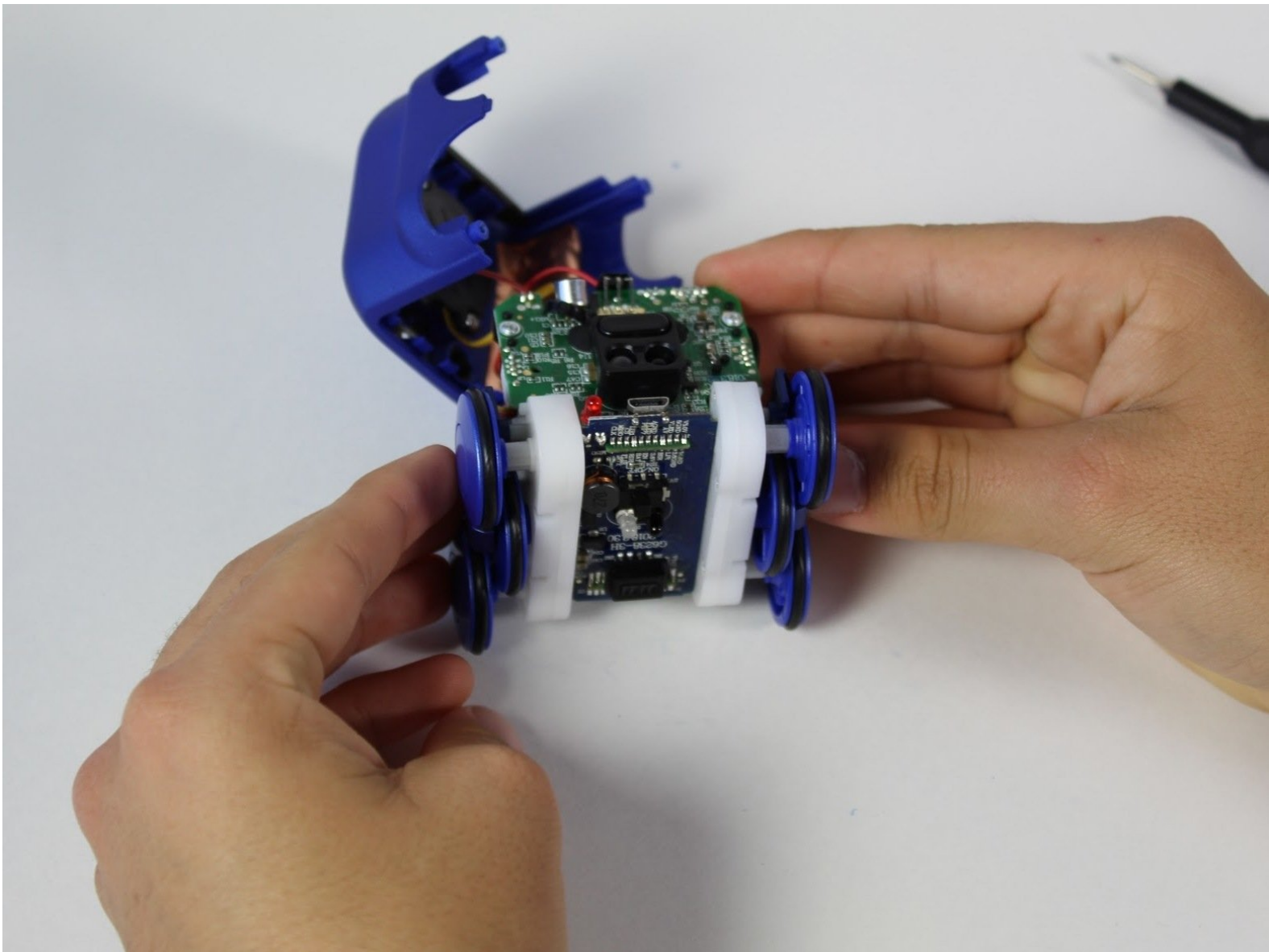




# Spin Master Boxer Wheel Gears Replacement

If the Spin Master Boxer Robot does not move, gears inside of wheels may need to be replaced. Follow this guide.

Written By: Lauren Roide



## INTRODUCTION

If Robot fails to move, the gears inside of wheels may need to be replaced. Follow this guide for instructions on how to access and replace gears. This can be applied to both sets of wheels. You will need a Phillips #00 Screwdriver and tweezers.



### TOOLS:

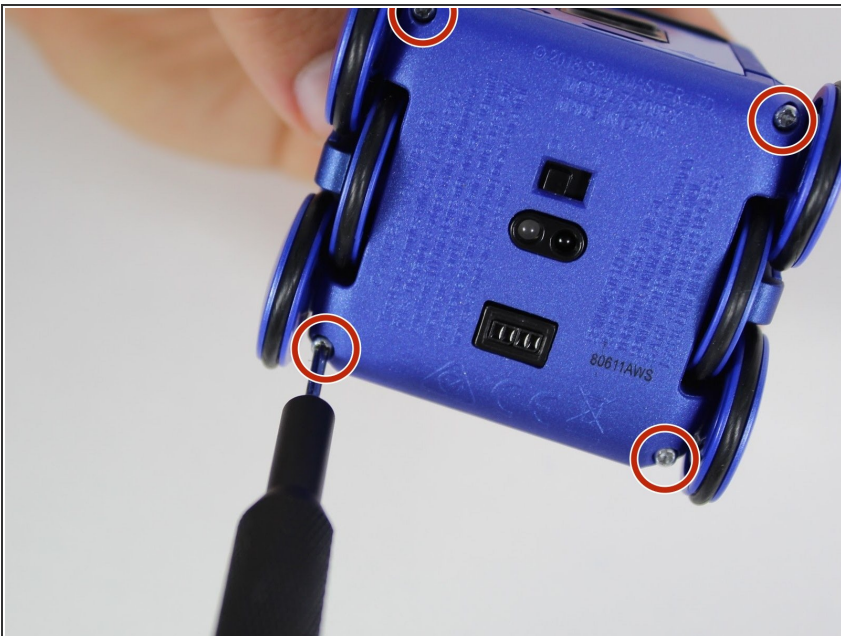
- [Tweezers](#) (1)
  - [Phillips #00 Screwdriver](#) (1)
-

## Step 1 — Robot Screen



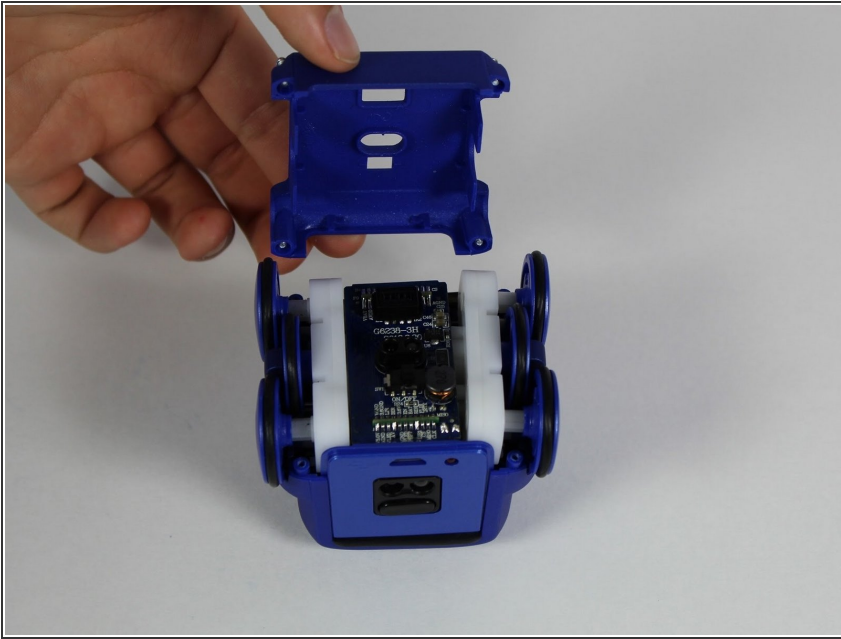
- Set Spin Master Boxer on your workspace so that the bottom panel faces upwards.

## Step 2



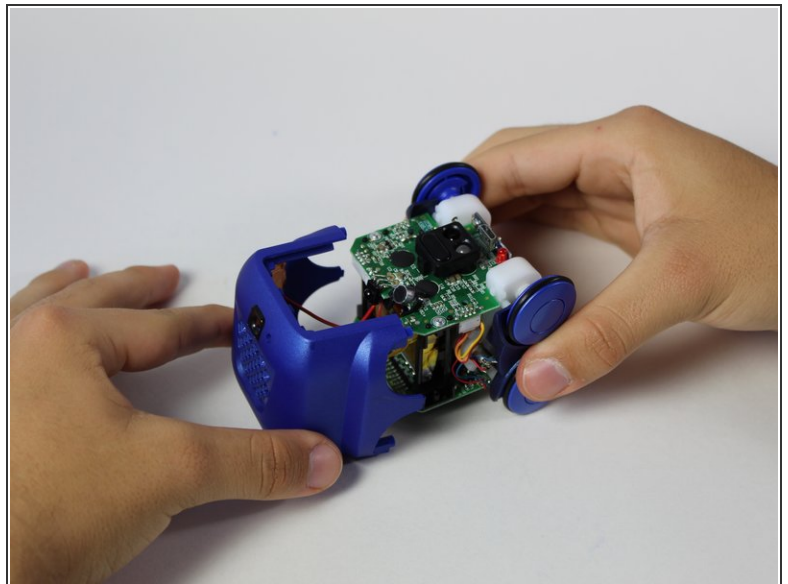
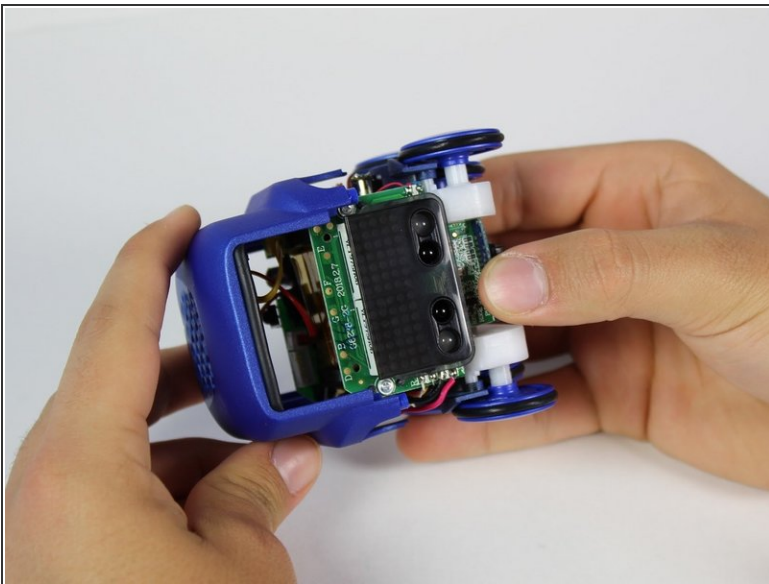
- Using a Phillips #00 screw driver, unscrew the four 4mm screws in each corner of the bottom panel.

### Step 3



- Carefully remove the bottom panel of the Spin Master Boxer by lifting up, away from the main body of robot.

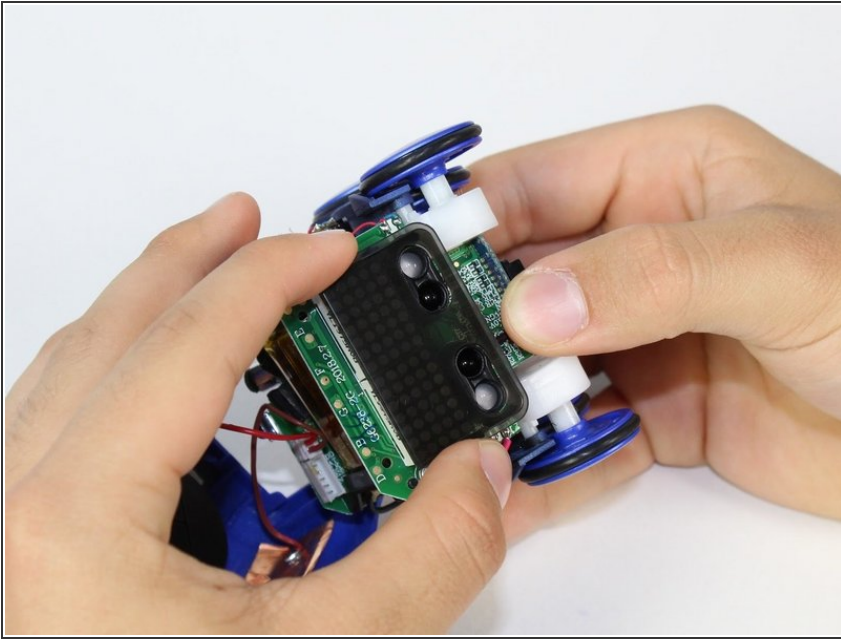
### Step 4



- While holding onto the axels of the wheels, gently pull the top panel of the robot away from its body.
- ⓘ Be aware when removing the panel that multiple wires connect it to the body of the Spin Master Boxer.

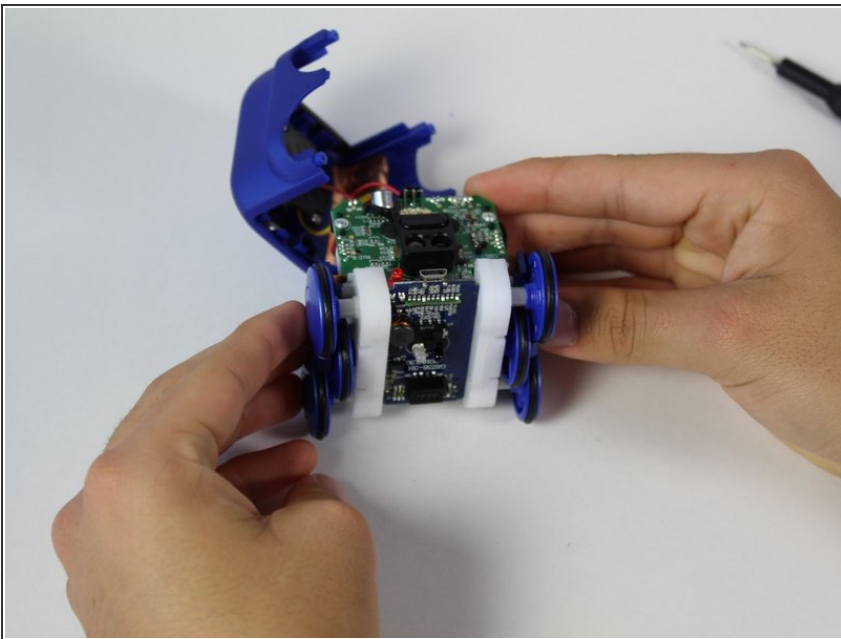


## Step 5



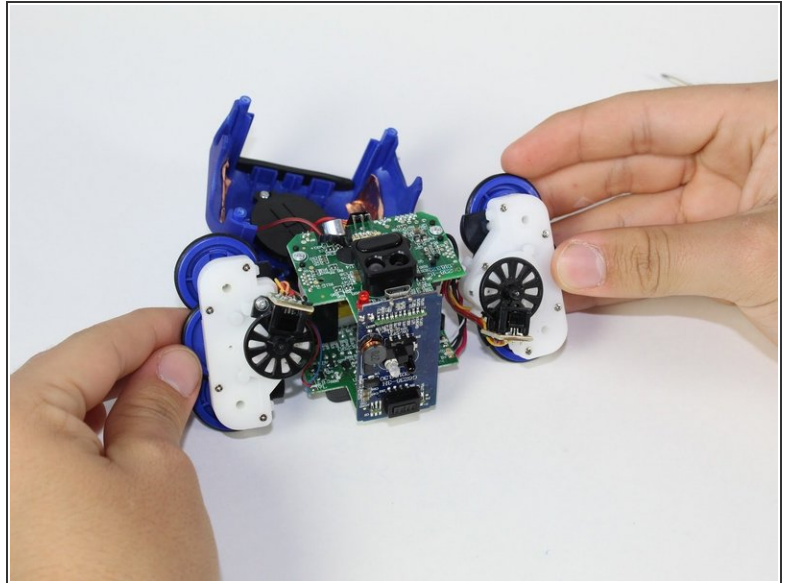
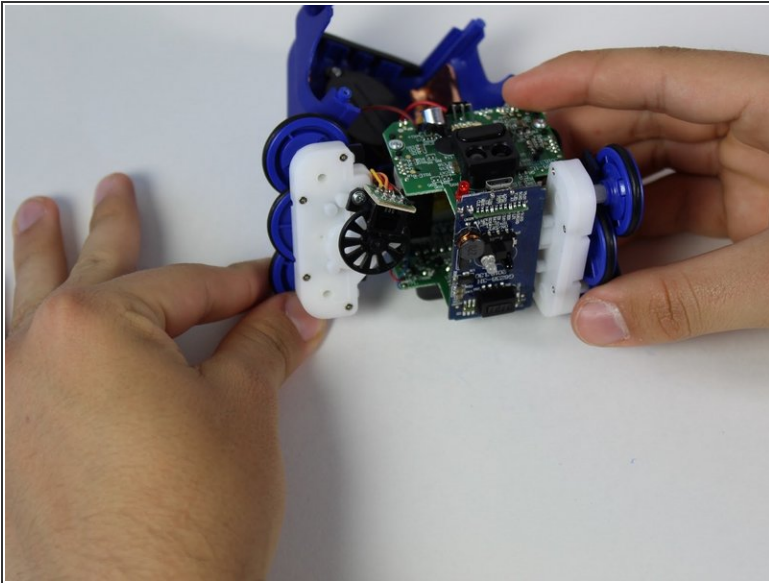
- Remove the plastic screen from the body of the robot. It should come off easily as it is not attached by anything.

## Step 6 — Robot Wheel Gears



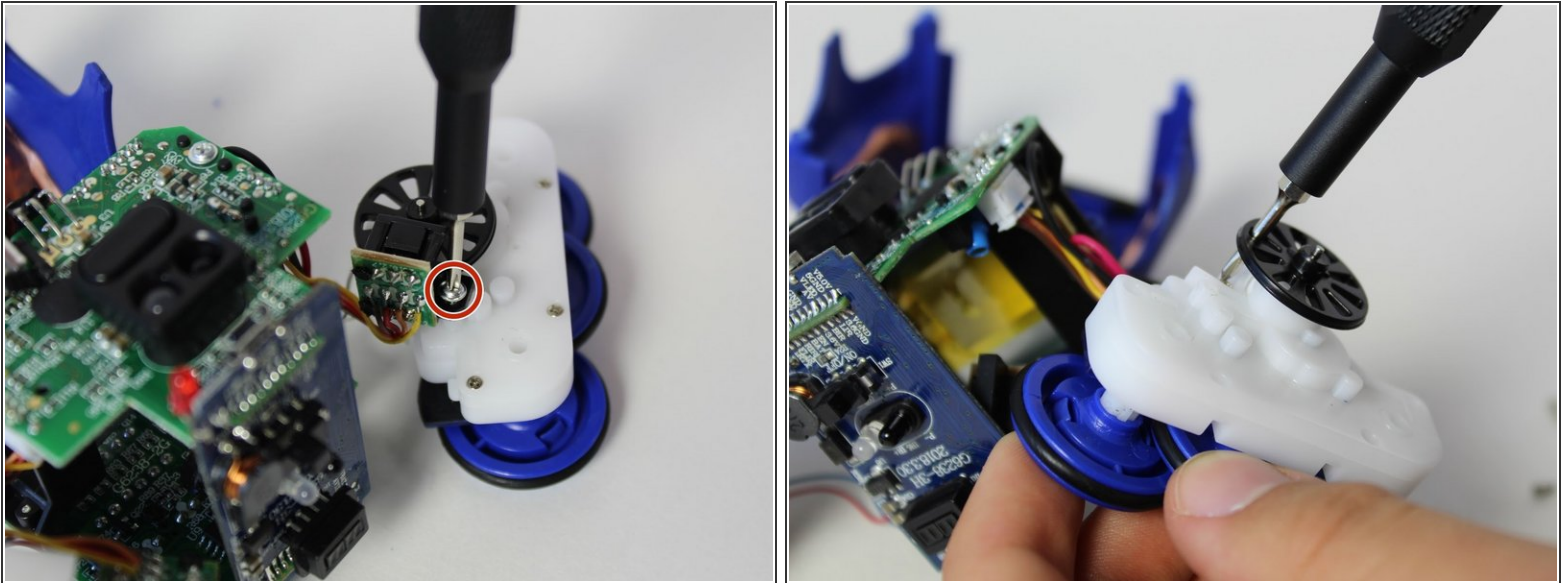
- Place robot on back so that the sensors are facing up.

## Step 7



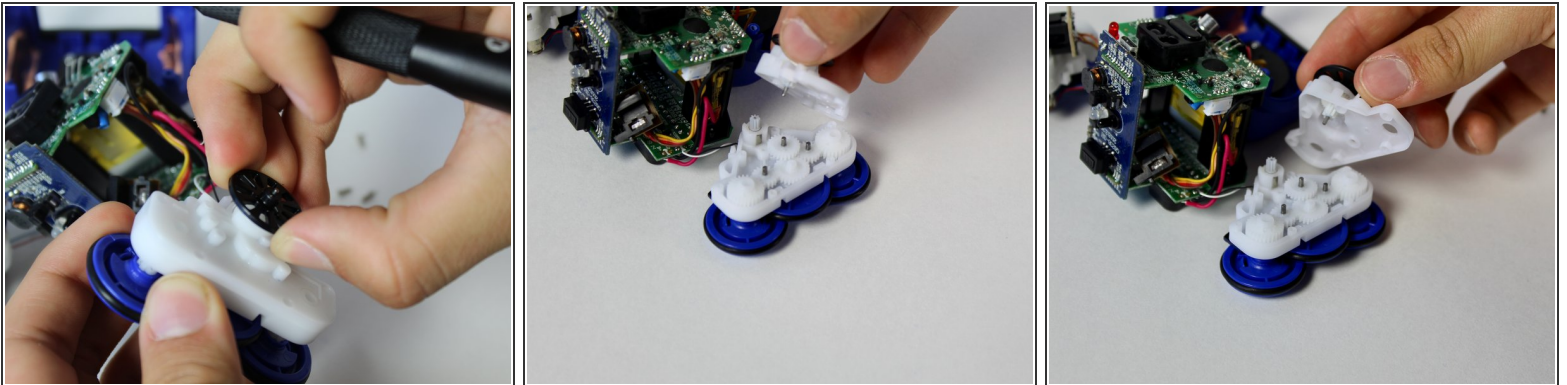
- Gently separate the left set of wheels from the inner portion of the circuit board, by gripping the wheels and pulling them away from main body of robot.
- ⓘ There are wires attached to each set of wheels, so be careful not to rip them apart.
- Repeat the process for the right set of wheels.

## Step 8



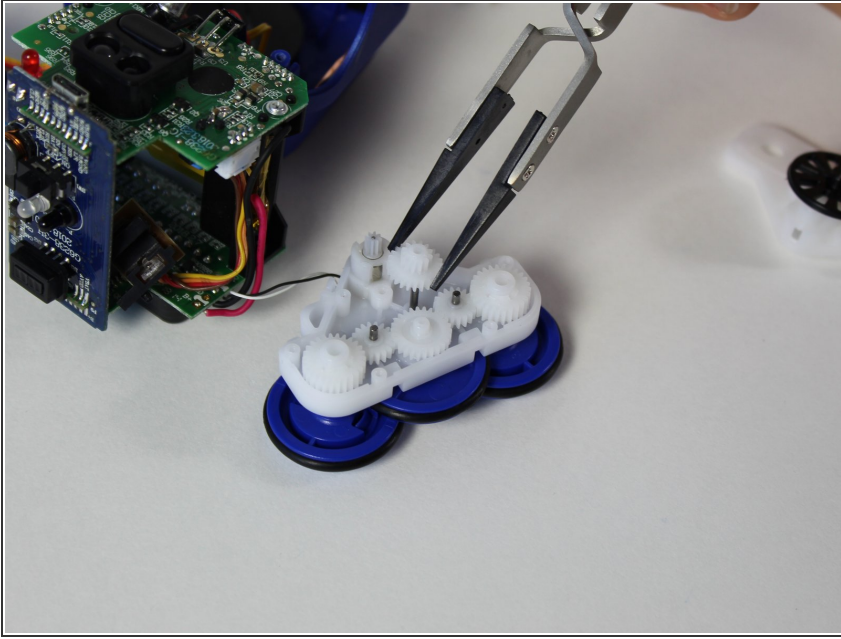
- Use the Phillips #00 Screwdriver to remove the 3mm screw that connect the black wheels to the gears.
- ⓘ You will have to go through the black wheel to unscrew some of the screws.

## Step 9



- Grip wheel, and gently pull up, to separate white gear casing into its front and back panel.

## Step 10



- Using tweezers, grip defective gear, and pull up and out of gear system to replace.

To reassemble your device, follow these instructions in reverse order.