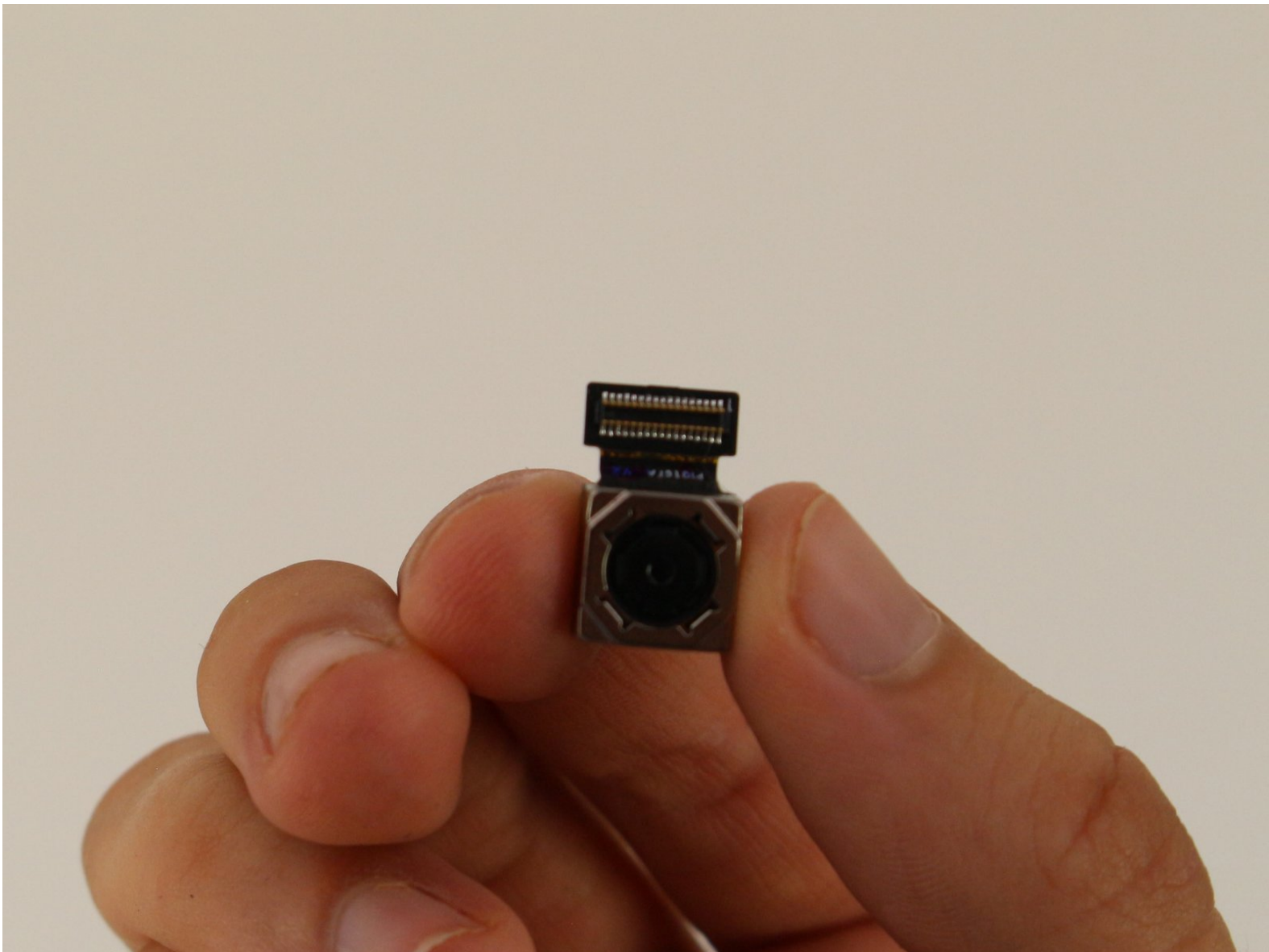




Nokia 6 Front-Facing Camera Replacement

Use this guide to learn how to replace your Nokia 6 front-facing (selfie) camera.

Written By: Chrissy Robins



INTRODUCTION

This guide will help you replace the front-facing camera for the Nokia 6.

Be sure to take extra caution when removing it from the motherboard.

TOOLS:

- [SIM Card Eject Tool](#) (1)
 - [Phillips #000 Screwdriver](#) (1)
 - [Phillips #00 Screwdriver](#) (1)
 - [Jimmy](#) (1)
 - [iFixit Opening Picks set of 6](#) (1)
 - [Heat Gun](#) (1)
 - [Spudger](#) (1)
 - [Tweezers](#) (1)
-

Step 1 — Display Assembly



⚠ Power off your Nokia 6 before beginning disassembly.

- Insert the SIM card ejection tool into the hole on the left side of the phone.
- Remove the SIM card and microSD card.

Step 2



⚠ If your display glass is cracked, take precaution by taping over the display to prevent further breakage and harm.

- Lay overlapping strips of clear packing tape over the Nokia 6's display until the whole screen is covered.

Step 3



- To soften the adhesive, use a heat gun and heat one edge of the phone for five minutes.
- To use the heat gun, plug it into an outlet.

⚠ When the heat gun is plugged in, the heat gun automatically turns on and will start blowing hot air.

Step 4



- Take a Jimmy and slide it under the glass after the adhesive has been softened.
- Place a pick under the glass after lifting with the pry tool so that the screen won't re-adhere to the frame again.

⚠ Make sure to not touch the LCD edge underneath the glass layer with the metal pry tool or the cards. This can damage the ribbon cables underneath and compromise the structural integrity of the phone itself.

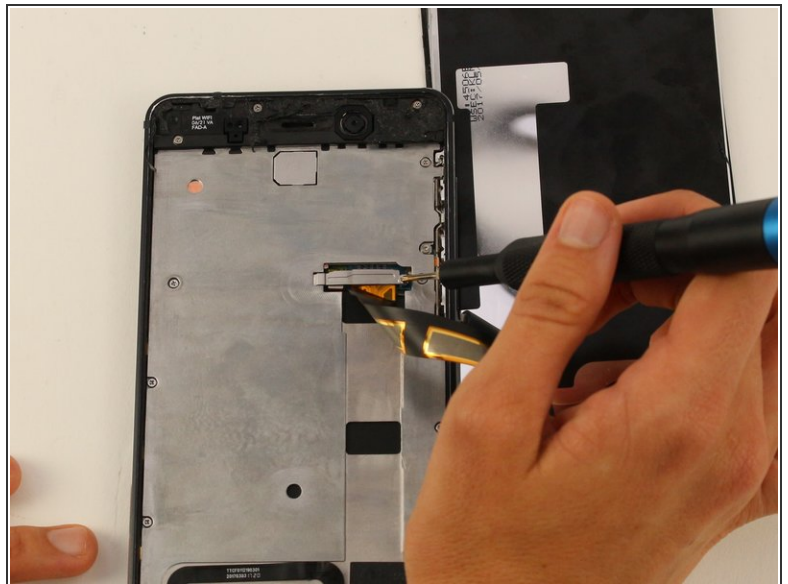
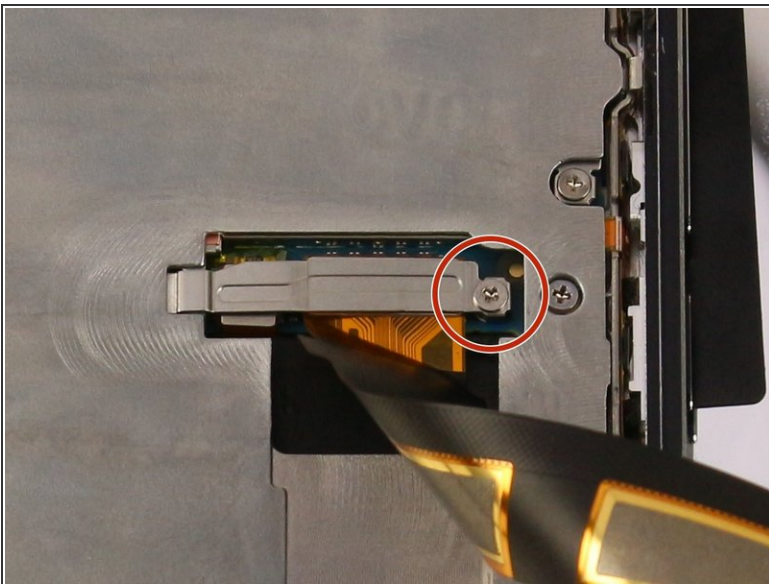
- ① The corners of the screen are the most fragile part of the screen. Make sure that the entire edge of the screen is dislodged from the frame before prying at the corners.

Step 5



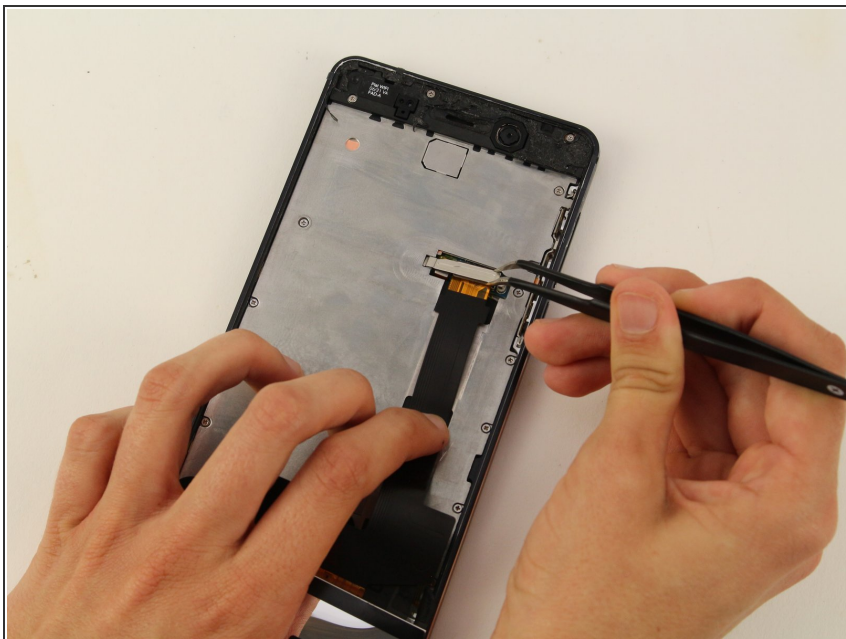
- Lift the screen off of the phone.

Step 6



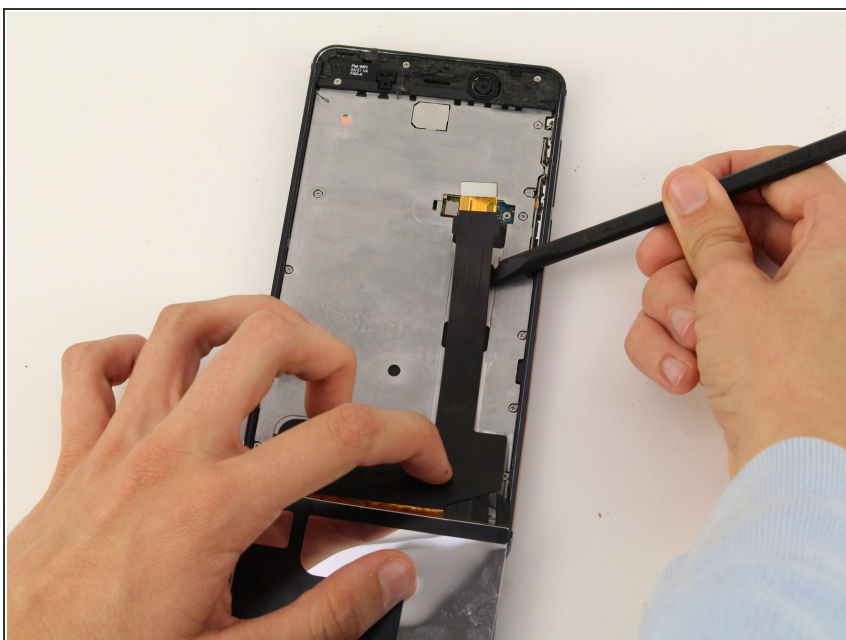
- Use a Phillips #000 screwdriver to remove the 1 mm x 1.4 mm screw holding down the metal bracket over the screen ribbon connector.

Step 7



- Remove the metal bracket with a tweezer.

Step 8

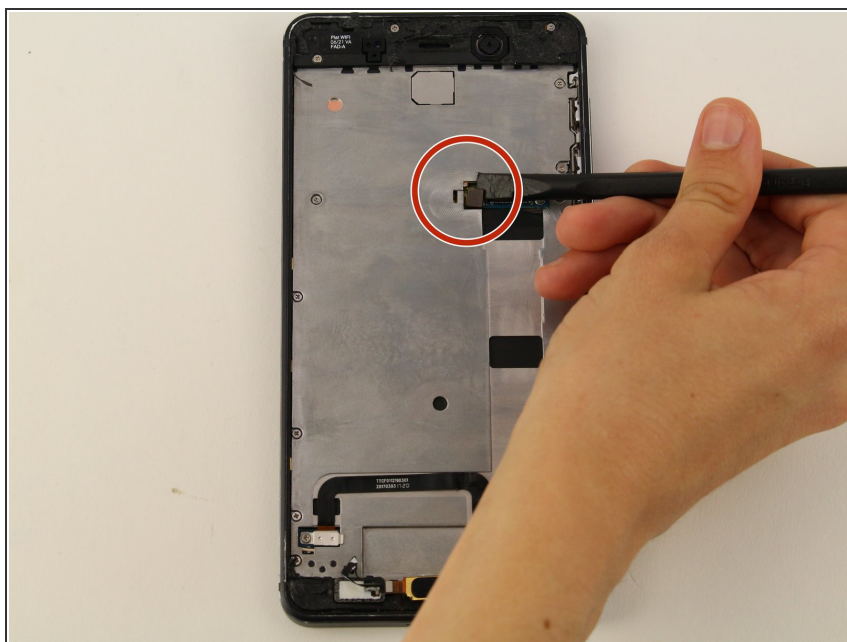


- Use a spudger to disconnect the screen ribbon connector and free the display assembly.

⚠ The corners and edge of the LCD are fragile. Be careful attaching it to the back of the phone.

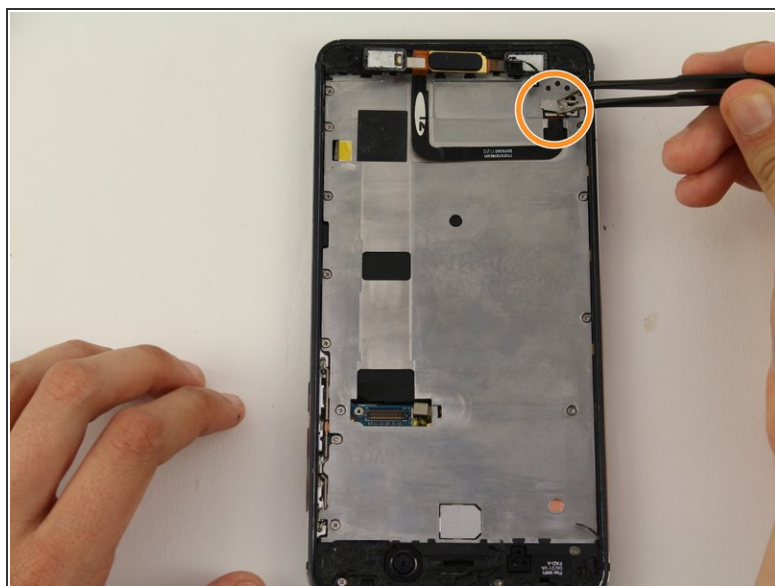
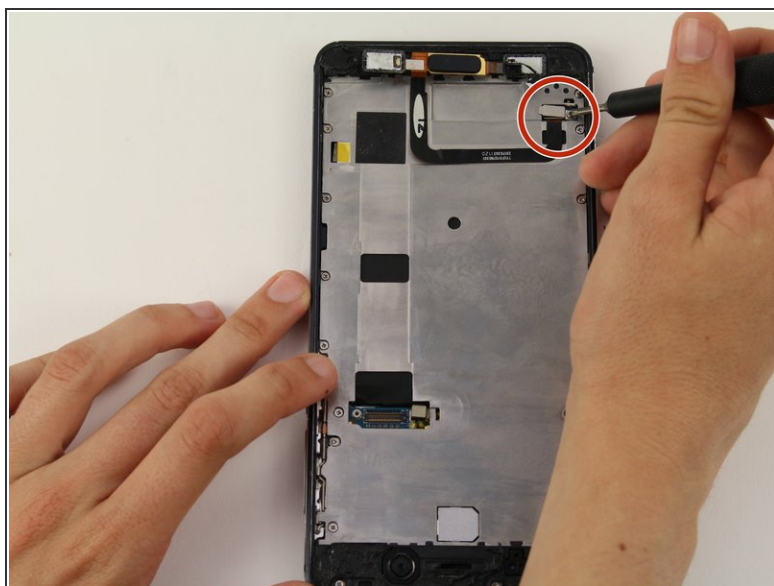
- Carefully remove the screen from the device.

Step 9 — Home Button Assembly



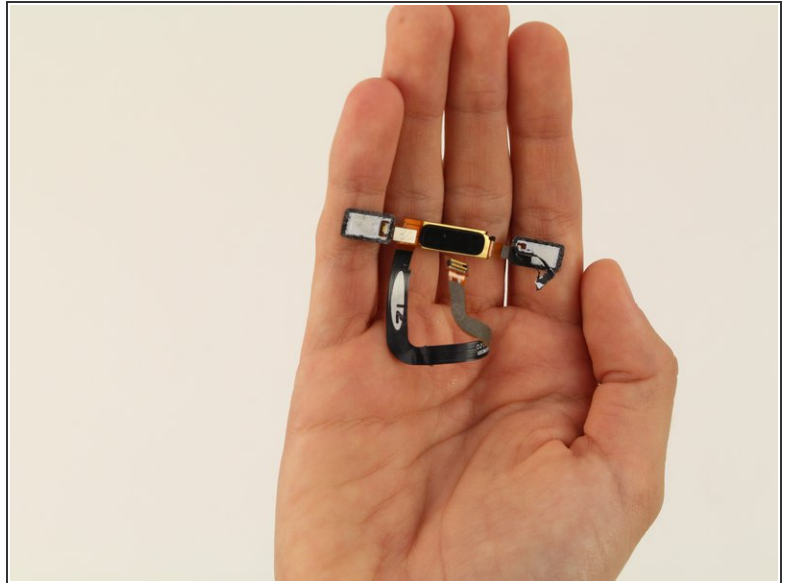
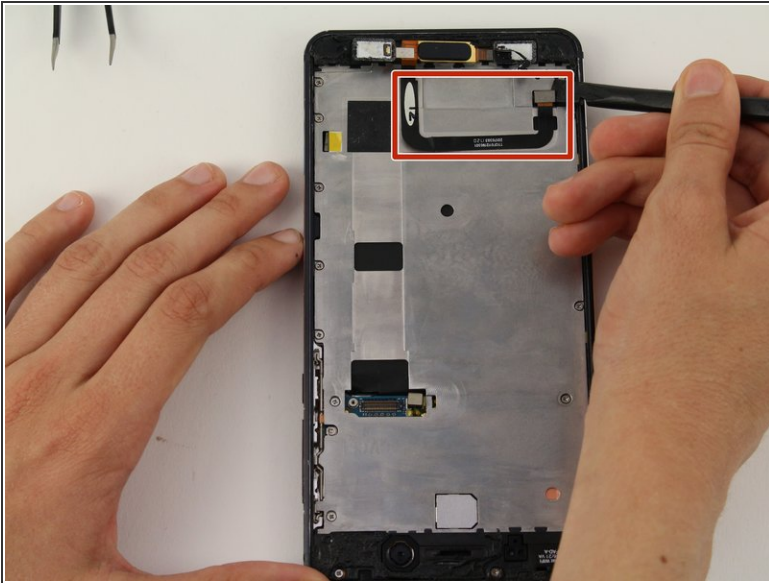
- Disconnect the battery connector with a spudger.

Step 10



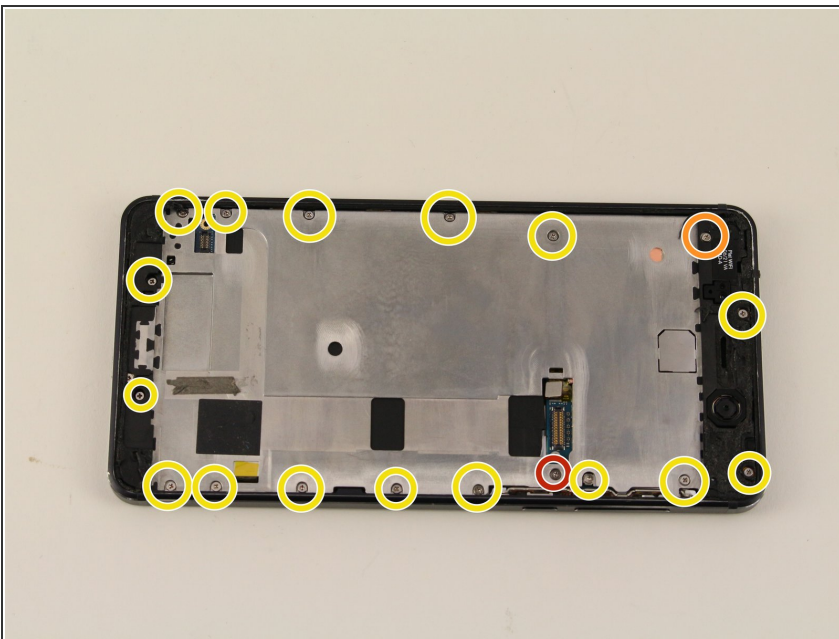
- Use a Phillips #00 screwdriver to remove the 1.2 mm x 2.2 mm screw in the upper hand corner of the phone.
- Use tweezers to remove the bracket.

Step 11



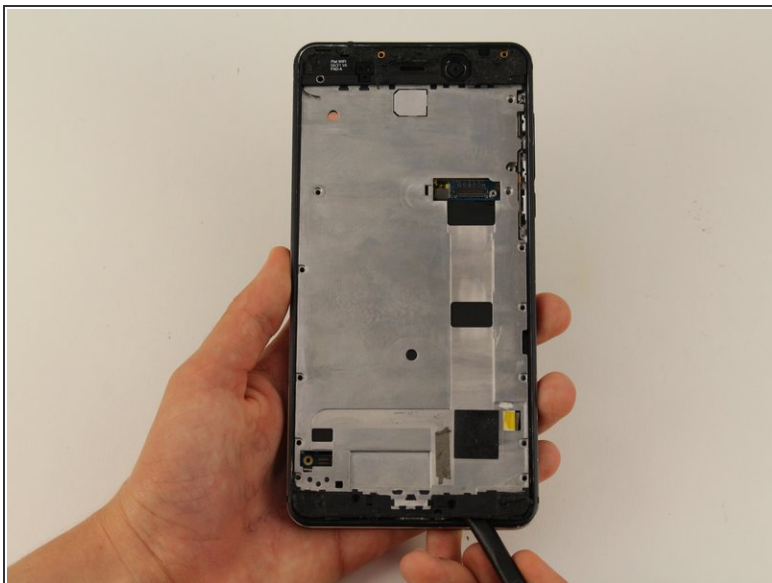
- Detach the cable with the black nylon spudger.
- Detach the home button and remove it from the device.

Step 12 — Midframe



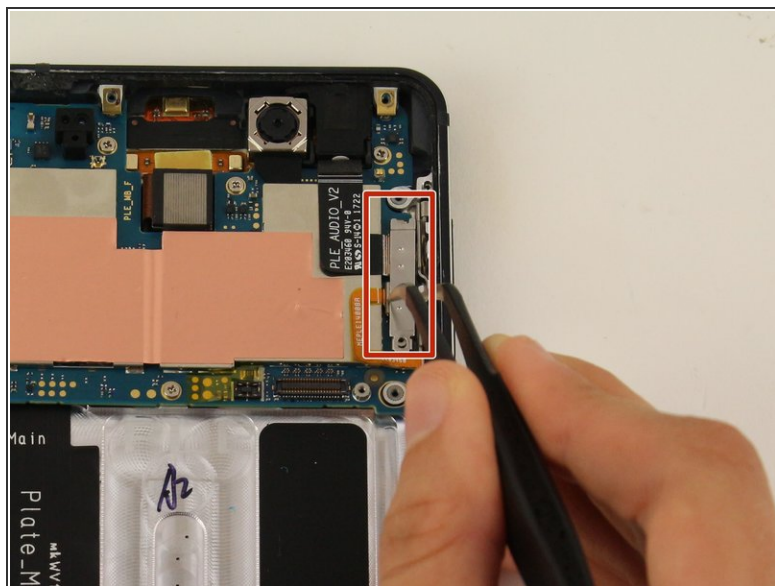
- Remove 18 screws.
 - There is one 1 mm x 1.4 mm screw that needs to be removed by a Phillips #000 screwdriver.
 - One of the screws is 1.2 mm x 4.2 mm and will be removed by a Phillips #00.
 - The remaining 16 screws can be removed by the Phillips #00 screwdriver and are 1.2 mm x 2.2 mm.

Step 13



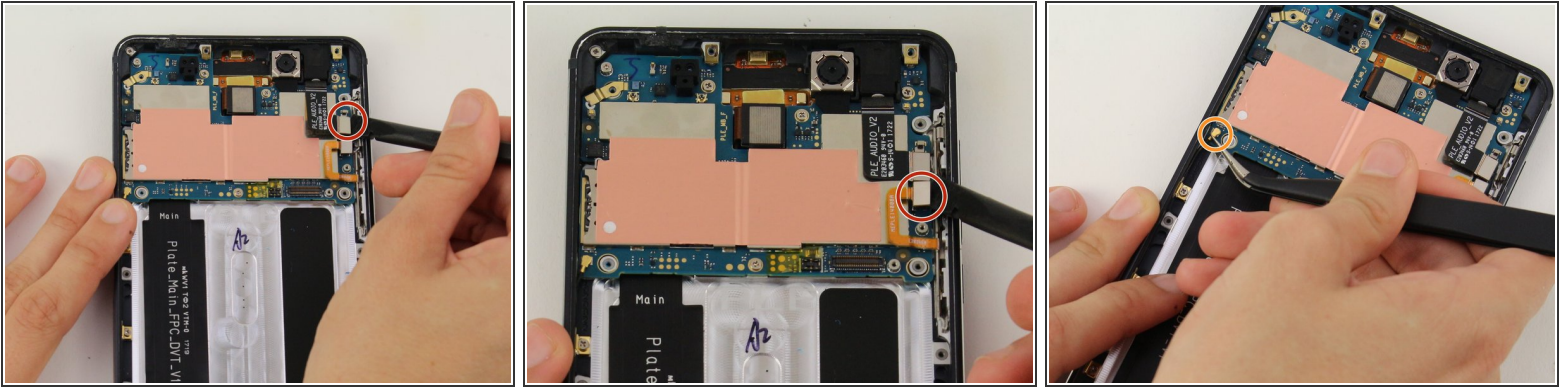
- Decouple the midframe with the spudger and remove the midframe from the device.

Step 14 — Motherboard



- Remove the bracket with tweezers.

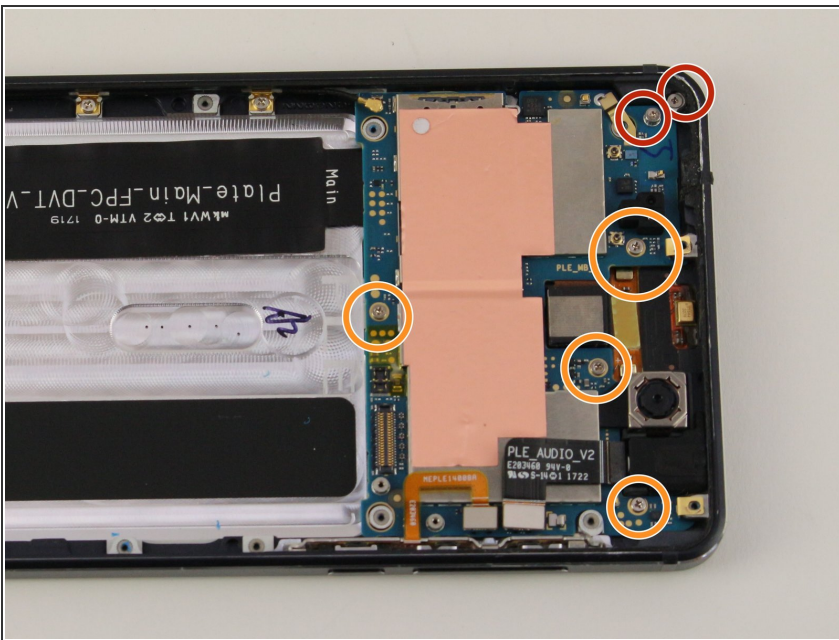
Step 15



- Detach the two cables with the spudger.
- Detach the cable with a pair of tweezers.

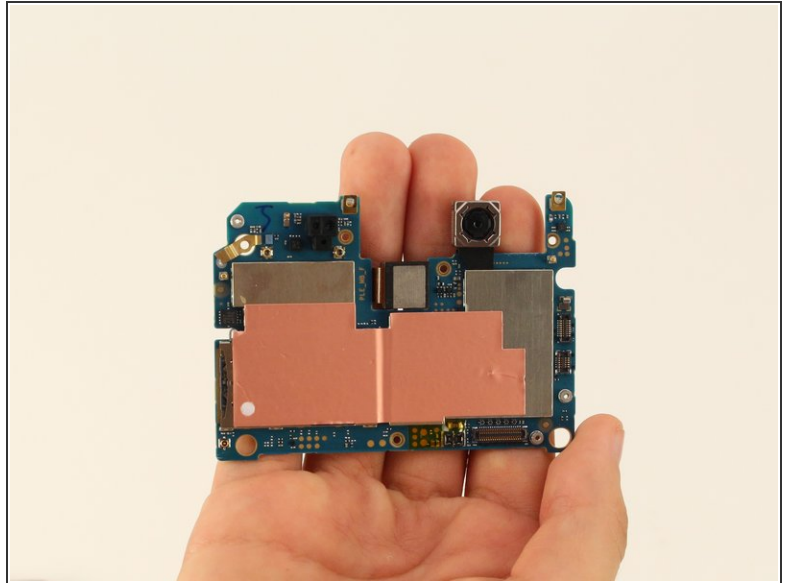
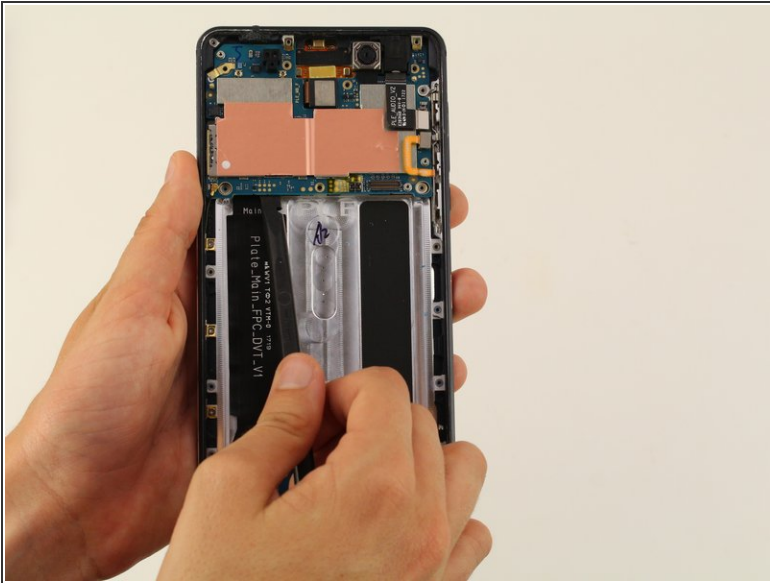
⚠ Be careful when detaching the cables, make sure to not completely remove the cables from the phone!

Step 16



- Remove six screws.
- Two of these screws are 1.0 mm x 1.4 mm and need to be removed by a Phillips #000 screwdriver.
- The remaining four screws are 1.2 mm x 2.2 mm and are removed by a Phillips #00 screwdriver.

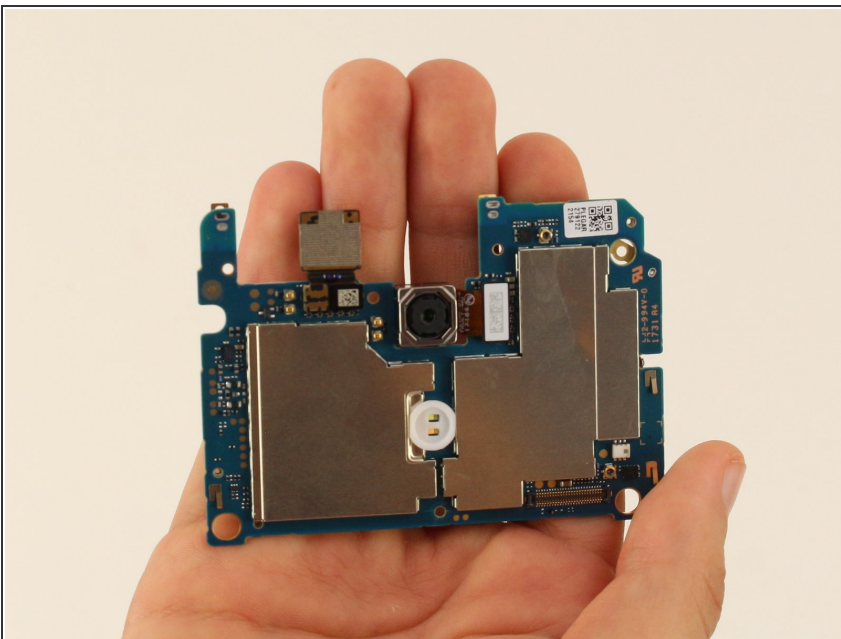
Step 17



- Remove the motherboard from the Nokia 6 with the spudger.

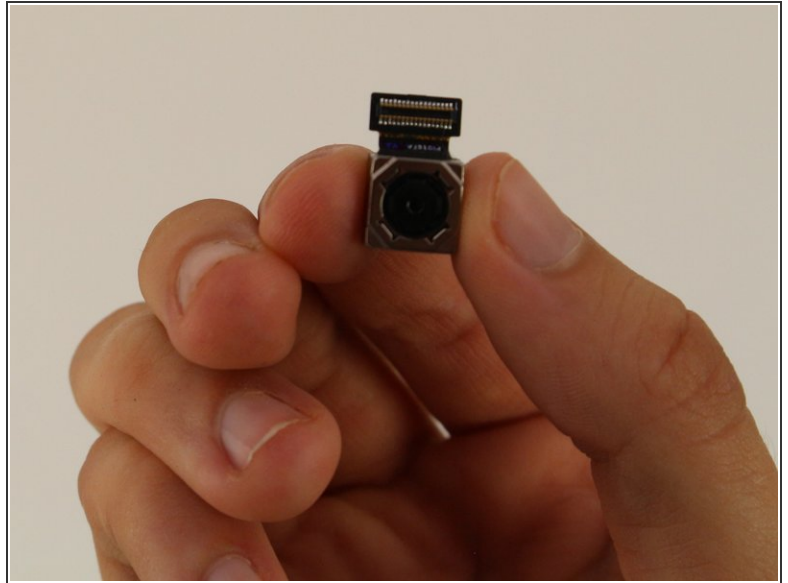
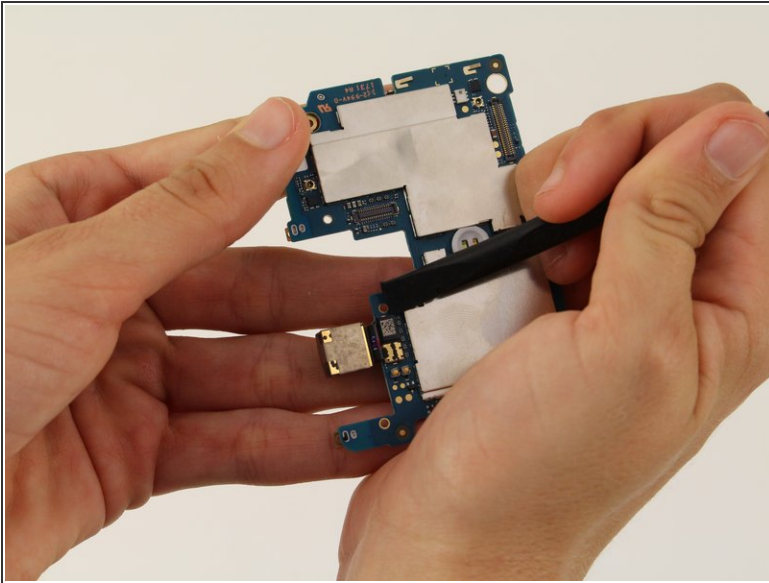
⚠ Be careful because the motherboard is fragile. Wiggle it gently to remove it.

Step 18 — Front-Facing Camera



- Turn the motherboard around to see the front-facing camera.

Step 19



- Remove the 8MP front-facing camera with the spudger.

To reassemble your device, follow these instructions in reverse order.